

SONY

SONY CFI-ZAC1
Play Station
Access Controller



SONY CFI-ZAC1 Play Station Access Controller Instructions

[Home](#) » [Sony](#) » SONY CFI-ZAC1 Play Station Access Controller Instructions 

Contents

- [1 SONY CFI-ZAC1 Play Station Access Controller](#)
- [2 Product Information](#)
- [3 Product Usage Instructions](#)
- [4 INSTALLATION STEPS](#)
- [5 PARTS](#)
- [6 Documents / Resources](#)
 - [6.1 References](#)
- [7 Related Posts](#)

SONY[®]

SONY CFI-ZAC1 Play Station Access Controller



Product Information

Specifications:

- Model Number: 5-054-743-11
- Brand: Sony
- Platform: PlayStation
- Manufacturer: Sony Interactive Entertainment Inc.

Product Usage Instructions

Setting Up the Product

1. Connect the product to a power source using the provided power cable.
2. Connect the product to your display device using the appropriate cables (HDMI, etc.).
3. Power on the product by pressing the power button.
4. Follow on-screen prompts to complete the initial setup process.

Using the Product:

Once the product is set up, you can use it to play games, stream content, and access various applications.

Troubleshooting:

If you encounter any issues with the product, refer to the user manual or visit playstation.com/access-help for assistance.

FAQs (Frequently Asked Questions)

• Q: What should I do if my product is not powering on?

A: Check the power connection and ensure that the power source is functioning properly. If the issue persists, contact customer support.

• Q: How can I update the software on my product?

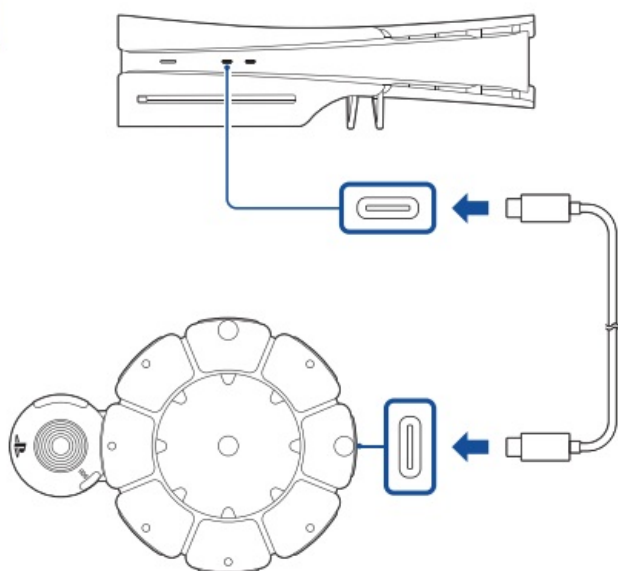
A: Go to the system settings menu and select the software update option to check for and install any available updates.

• Q: Can I use accessories from other brands with this product?

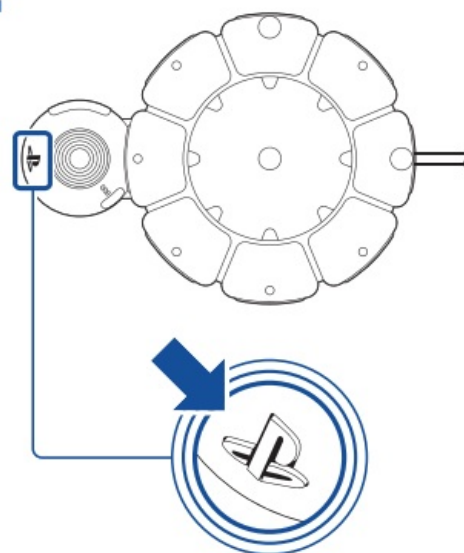
A: It is recommended to use accessories specifically designed for this product to ensure compatibility and optimal performance.

INSTALLATION STEPS

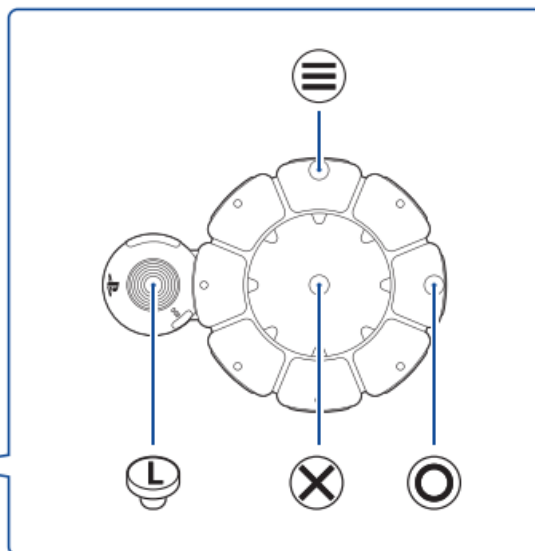
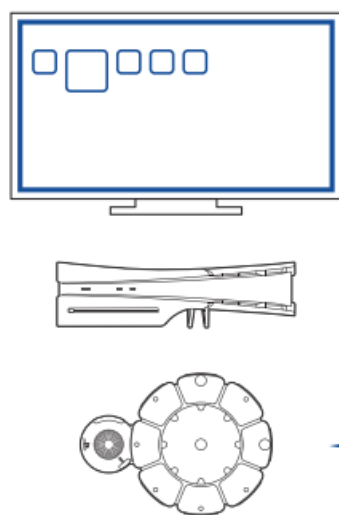
1



2

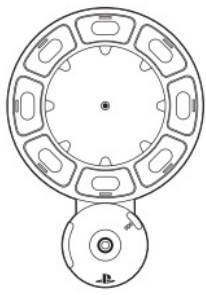


3



playstation.com/access-help

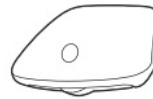
PARTS



(1)



(1)



(8)



(4)



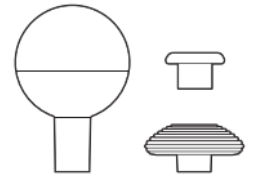
(4)



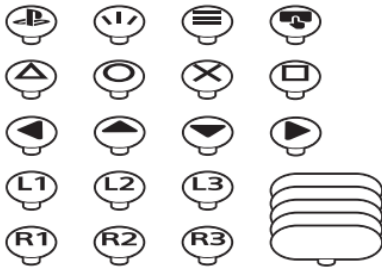
(2)



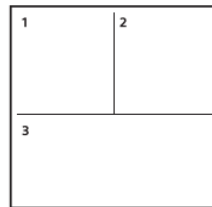
(1)



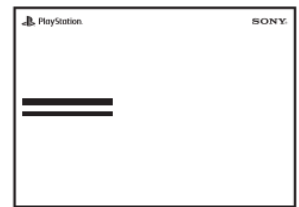
(3)



(23)



(1)



(1)



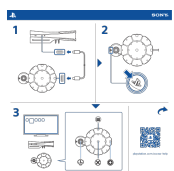
5-054-743-11 (1)

- 2023 Sony Interactive Entertainment LLC. Printed in China.

- "PS" and "PlayStation" are registered trademarks or trademarks of Sony Interactive Entertainment Inc.

- "SONY" and "Sony Interactive Entertainment" are registered trademarks or trademarks of Sony Group Corporation.

Documents / Resources



[SONY CFI-ZAC1 Play Station Access Controller \[pdf\] Instructions](#)

CFI-ZAC1 Play Station Access Controller, CFI-ZAC1, Play Station Access Controller, Station Access Controller, Access Controller, Controller

References

- [User Manual](#)

[Manuals+](#), [Privacy Policy](#)

This website is an independent publication and is neither affiliated with nor endorsed by any of the trademark owners. The "Bluetooth®" word mark and logos are registered trademarks owned by Bluetooth SIG, Inc. The "Wi-Fi®" word mark and logos are registered trademarks owned by the Wi-Fi Alliance. Any use of these marks on this website does not imply any affiliation with or endorsement.