



SONOSYNE SSW 2020 Front Firing Powered Subwoofer Owner's Manual

[Home](#) » [SONOSYNE](#) » SONOSYNE SSW 2020 Front Firing Powered Subwoofer Owner's Manual 

Contents

- [1 SONOSYNE SSW 2020 Front Firing Powered Subwoofer](#)
- [2 Product Information](#)
- [3 INTRODUCTION/UNPACKING](#)
- [4 DIMENSION/PRODUCT DRAWING](#)
- [5 MOUNTING](#)
- [6 REARVIEW](#)
- [7 SPECIFICATIONS](#)
- [8 Documents / Resources](#)
 - [8.1 References](#)
- [9 Related Posts](#)

SONODYNE

SONOSYNE SSW 2020 Front Firing Powered Subwoofer



Product Information

- **Name:** SSW 2020
- **Type:** Stereo passive subwoofer
- **Inputs:** Direct (4 Ohm) and 70/100V
- **Outputs:** Highpass outputs for satellite speakers
- **Power:** 80W available by connecting to the respective input terminal
- **Input Selection:** Slide switch for selecting between direct and 70/100V inputs
- **Mode Switch:** Provides stereo mode operation and mono mode operation (in case of 70/100V input)
- **Connection:** Euroblock terminals for easy wiring
- **Mounting:** Comes with wall-mount brackets for easy wall installation
- **Dimensions:** 370.0 mm (H) x 480.0 mm (W) x 225.0 mm (D)
- **Color:** White/Black
- **Weight:** Net weight – 15.5kg, Gross weight – 17.1kg

INTRODUCTION/UNPACKING

INTRODUCTION

The SSW 2020 is a stereo passive subwoofer with both direct (4 Ohm) and 70/100V input, and a pair of highpass outputs for satellite speakers. With 70V input, 3 different power taps are available: 10 W, 20W and 40W. With 100V input, 20W, 40W and 80W are available, by connecting to the respective input terminal. Selection between inputs (direct and 70/100V) is carried out with a slide switch. Also provided is a mode switch which provides stereo mode operation and mono mode operation (in case of 70/100V input). In mono mode, the subwoofers are connected in series while the highpass output is available from the left channel only. Connection to the subwoofer is via Euroblock terminals which greatly facilitates wiring.

UNPACKING

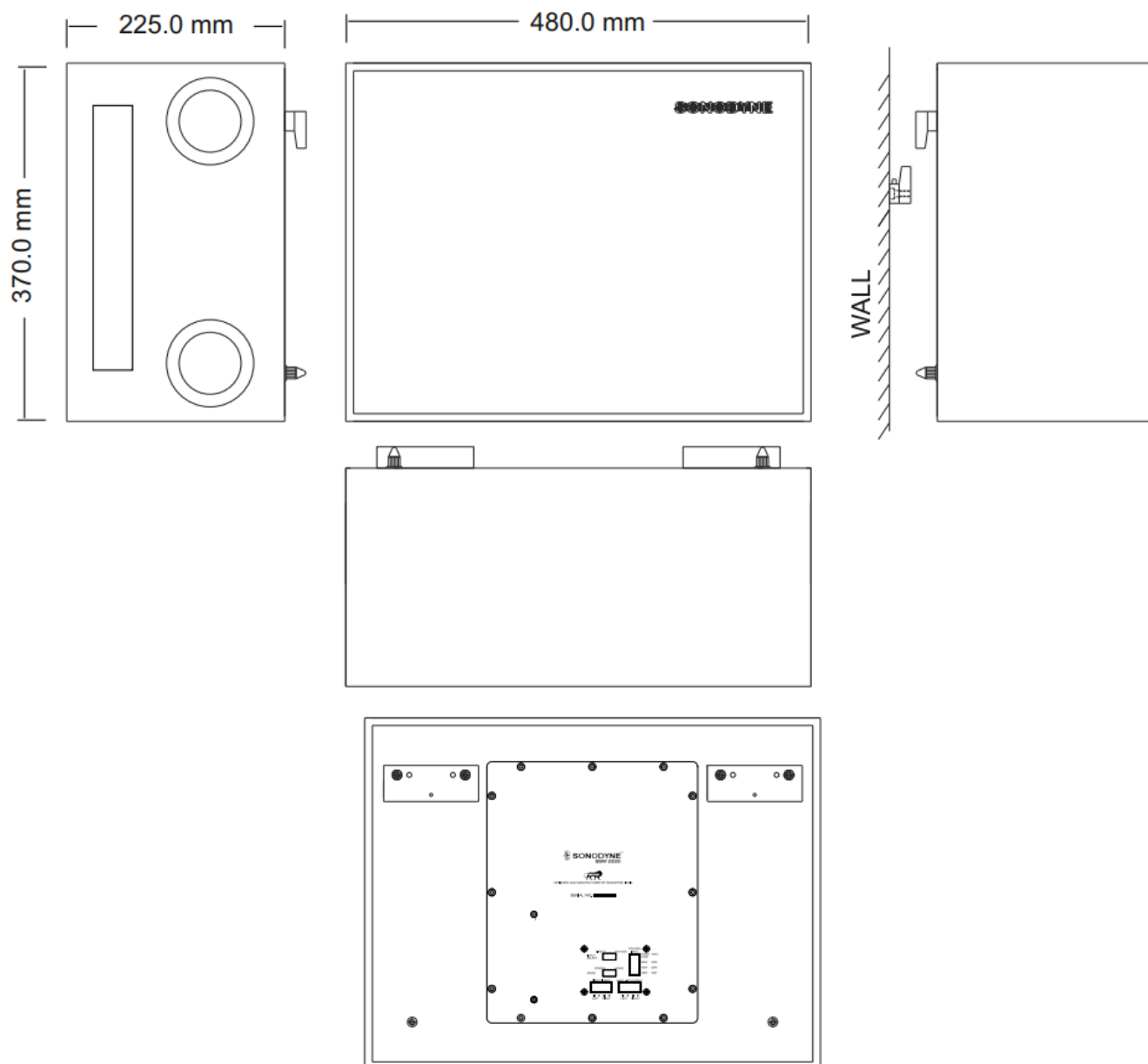
Cut open the tape and open the flaps. Remove the EPE buffer. Lift the unit out of the box and remove all protective covers. Please ensure that the following are attached to the rear of the unit.

1. 2 x wall-mount brackets fitted to the rear plate

2. 3 x female headers of Euroblock terminals

Inspect the speaker for any sign of damage. Please retain all packing materials in case you have to transport the unit in future.

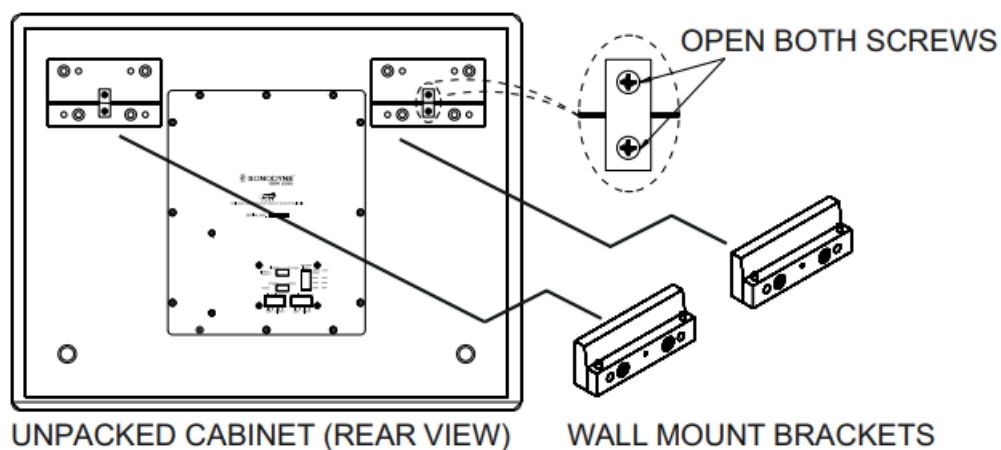
DIMENSION/PRODUCT DRAWING



MOUNTING

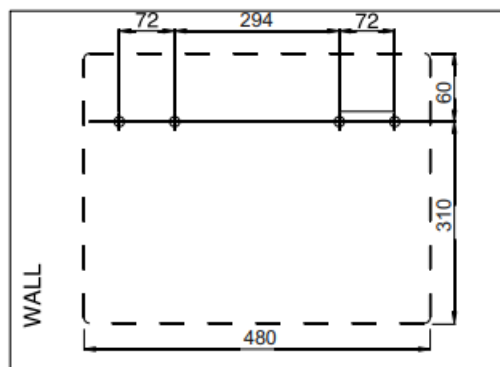
The SSW 2020 comes fitted with wall mount brackets so that you can hang it on the wall. Please follow the steps given below. The wall mount bracket of SW 2020 consists of 2 parts – one that is fitted to the cabinet and the other part to be fitted on the wall. There are 2 such sets. The wall mounting part is held to its cabinet counterpart with a fish-plate and 2 screws, for transit purposes. First open the 4 screws, and remove the plate. Please see Fig. 1 below.

FIG.1



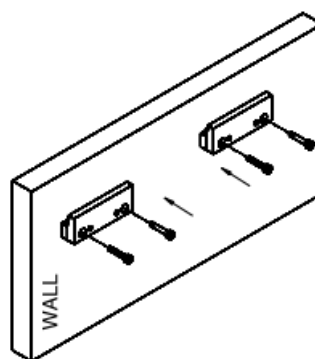
- Next, drill holes on the wall for the screws supplied, as per the following diagram, where you want to mount the SW 2020. Please see Fig. 2 below

STEP 1
FIG.2



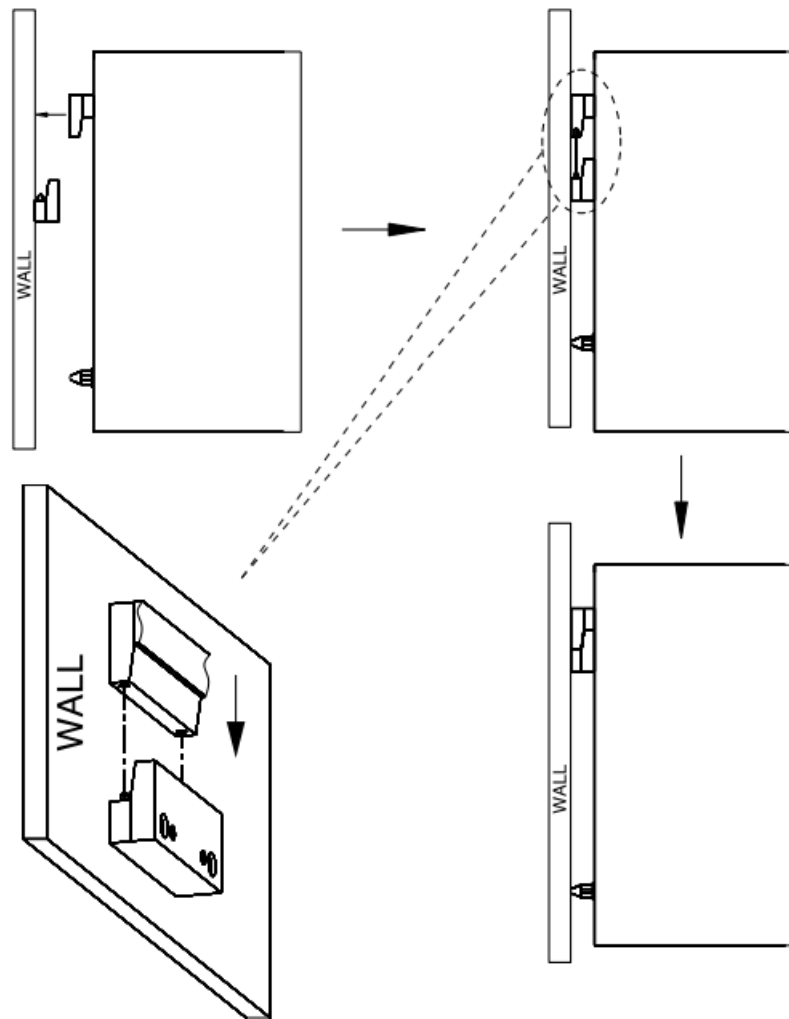
- Now fit the wall mounting brackets to the wall with the help of the screws supplied. Please see Fig. 3 below

STEP 2
FIG.3

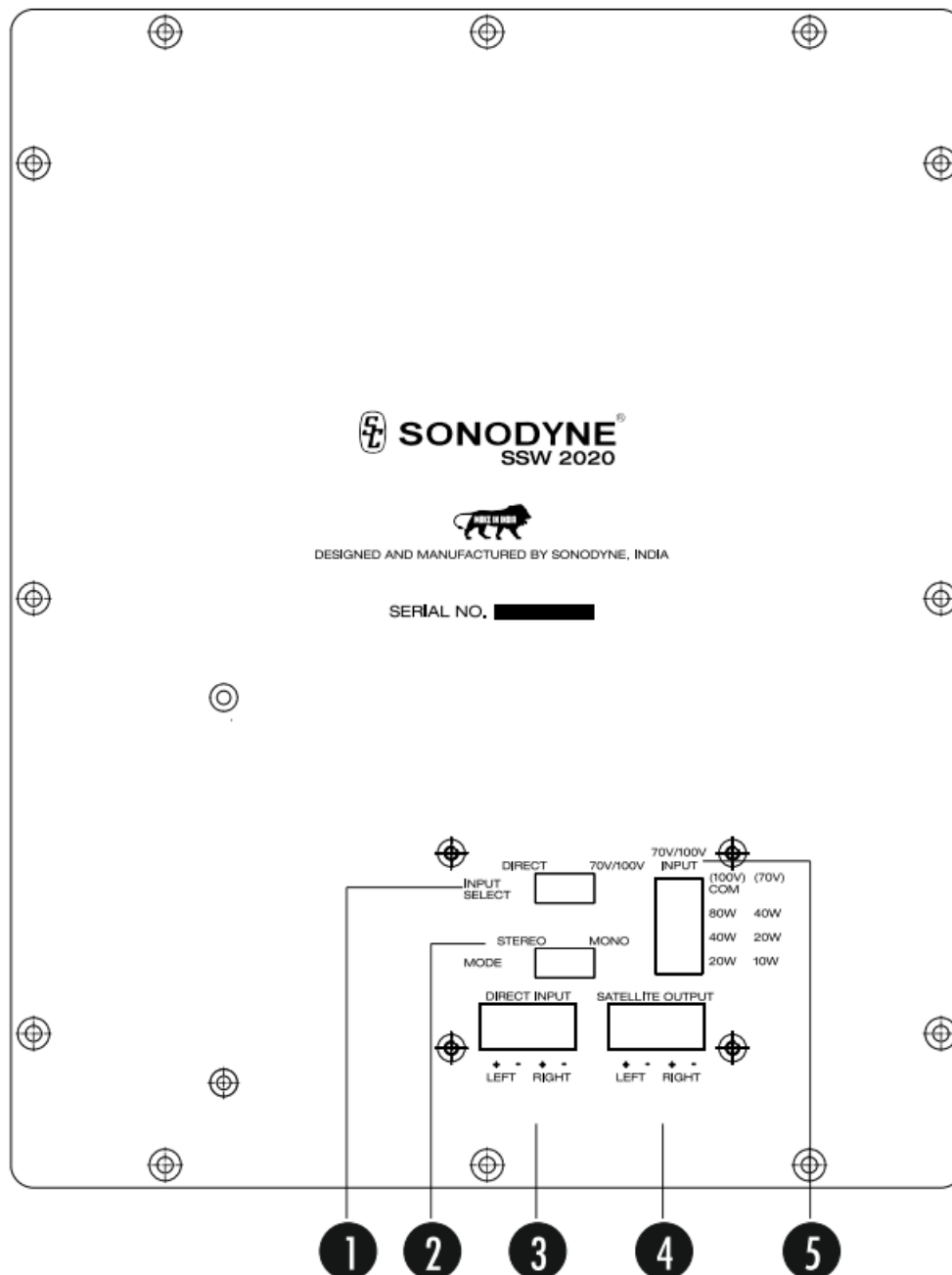


- Hold the cabinet vertically and align it, so that the tongue of the cabinet bracket is just above the groove on the wall bracket. Lower the cabinet so that the pins on the cabinet bracket engage with the corresponding holes on the wall bracket. Please see Fig. 4 below:

STEP 3: MOUNT THE CABINET
FIG. 4



REARVIEW



1. INPUT SELECT SWITCH

This is a slide switch for input selection. When connecting the 4 Ohm speaker output of your amplifier to the input of the SSW 2020, keep the switch in DIRECT mode. When connecting the 70V or 100V output of your amplifier, keep it in 70/100V position.

2. MODE SWITCH

This is a slide switch for stereo/ mono mode. If you have connected 2 channels of your amplifier output to the input of the SSW 2020, keep the mode switch in stereo position. If, however, the input is mono, as for instance, 70/100V output of an amplifier, keep the switch in mono position. In mono mode, the subwoofers are connected in series while the high-pass output is available from the left channel only. Do not connect speaker to right input and amplifier output to right input as this may cause malfunctioning.

3. DIRECT INPUT

Connect the 4 Ohm speaker output of your amplifier to these terminals. There is a pair of terminals – one for left channel and the other for right channel. Take care to observe correct polarity while making connections

4. SATELLITE OUTPUT

Connect your satellite speakers to these terminals. There is a pair of terminals -onefor left channel and the other for right channel. In stereo mode, the impedance of satellite speakers should be 4 Ohm for each channel. In mono mode, the satellite speaker connected to the left channel will only play. The impedance of this speaker should be 8 Ohm.

5. 70/100V INPUT

Connect the 70/100V output of your amplifier to this terminal It consists of a COM pin and 3 pins for different power taps. The power tap marking of 70V and 100V are printed on the rear plate. Connect the amplifier to the COM pin and any of the power tap pins.


SPECIFICATIONS

- **DESIGN:** Front firing powered subwoofer, vented
- **ENCLOSURE:** MDF
- **TRANSDUCER COMPLEMENTS:** 1 × 8" dual voice-coil subwoofer
- **FREQUENCY RANGE (-10dB):** 40Hz – 200Hz
- **FREQUENCY RESPONSE (-3dB):** 45Hz ~ 200Hz
- **SENSITIVITY (1W 1M):** 90dB (half space)
- **SPL @ RATED POWER:** 109dB @ 80W
- **IMPEDANCE, DIRECT INPUT:** 4 Ohm + 4 Ohm (stereo), 8 Ohm (mono)
- **AMPLIFIER POWER, DIRECT INPUT:** 150W + 150W
- **POWER TAPS 70V:** 10W, 20W, 40W
- **POWER TAPS 100V:** 20W, 40W, 80W
- **IMPEDANCE 70V:** 490, 245, 122 Ohm
- **IMPEDANCE 100V:** 500, 250, 125 Ohm
- **DIMENSIONS (H x W x D) MM:** 370 × 480 x 225
- **COLOUR:** White/ Black
- **MOUNTS:** Wall-mounting brackets
- **NET WEIGHT:** 15.5kg
- **GROSS WEIGHT:** 17.1kg

SONODYNE

SONODYNE, India• H.O.: 98 NB Block E New Alipore, Kolkata 700053

sonodyneofficial
+91 9830855260
SonodyneMusic
response@sonodyne.com
www.sonodyne.com

 <p>SONOSYNE SSW 2020</p>	<p>SONOSYNE SSW 2020 Front Firing Powered Subwoofer [pdf] Owner's Manual SSW 2020 Front Firing Powered Subwoofer, SSW 2020, Front Firing Powered Subwoofer, Firing Powered Subwoofer, Powered Subwoofer, Subwoofer</p>
--	--

References

- [Sonodyne | Residential, Studio, Install, Live, Cinema](#)