



SONOS MOVE Portable WiFi and Bluetooth Speaker User Guide

[Home](#) » [Sonos](#) » SONOS MOVE Portable WiFi and Bluetooth Speaker User Guide 

Contents

- [1 SONOS MOVE Portable WiFi and Bluetooth Speaker](#)
- [2 Product Information](#)
- [3 Product Usage Instructions](#)
- [4 Overview](#)
- [5 Controls and lights](#)
- [6 Connector panel](#)
- [7 Charging](#)
- [8 Specifications](#)
- [9 Important safety information](#)
- [10 Documents / Resources](#)
 - [10.1 References](#)

SONOS

SONOS MOVE Portable WiFi and Bluetooth Speaker



Product Information

The Move is a durable, battery-powered smart speaker designed for both indoor and outdoor listening. It features a rechargeable battery that can last up to 10 hours. You can easily recharge the speaker by placing it on the included charging base or using a compatible USB-C charger (sold separately). The weatherproof design makes it ideal for barbecues, pool parties, and more. The Move can be controlled using the Sonos S2 or Sonos S1 app, the touch controls on the speaker, or your voice. It is also compatible with other Sonos speakers for multiroom listening.

Controls and Lights

The Move has various controls and lights that allow you to adjust volume, play/pause music, skip songs, and control microphone settings. The volume control buttons are located on the left and right sides of the speaker. You can also use the Sonos app or voice control to adjust the volume. The touch controls on the speaker allow you to play/pause music, skip to the next song, go to the previous song, and add the music playing in another room. However, skipping forward or going back is not possible when listening to a radio station.

The microphone button can be tapped to turn the microphone on or off. When the microphone light is on, voice control and microphone-dependent features like auto Trueplay are available. When the light is off, these features are unavailable. If you've installed a voice service and the microphone is off, you can still use voice commands by pressing and holding the microphone button without starting with a wake word.

The product's connection to WiFi or Bluetooth, volume mute status, and error signals are displayed through the status light. The battery light indicates the battery status. Blinking orange indicates low battery and solid orange indicates charging. The battery will continue to charge even after the light turns off. Move's remaining battery life is always visible in the Sonos app.

Connector Panel

The connector panel of the Move includes the following:

1. Power button: Press to power on, short press to put it to sleep, and long press (5 seconds) to power off. When not in use and off the charging base, the Move automatically goes to sleep to save battery. Pressing the power button wakes it up.
2. Join button: Press to connect the Move to your Sonos system during setup.
3. Handle: Allows for easy lifting and carrying of the speaker.

4. Bluetooth/WiFi toggle button: Press to switch between Bluetooth and WiFi modes.
5. USB-C port: Use a compatible USB-C charger for charging on the go. The USB port can also be used for diagnostic purposes but cannot play large data files.
6. Charging dock (included): Place the Move on the charging base for easy recharging without the need for extra wires or cables.

Product Usage Instructions

1. To charge the Move, either place it on the included charging dock or connect a compatible USB-C charger to the USB-C port.
2. When using the Move outdoors, make sure to take advantage of its weatherproof design. It is suitable for barbecues, pool parties, and other outdoor activities.
3. Control the Move using the Sonos S2 or Sonos S1 app, the touch controls on the speaker, or your voice. Adjust the volume by using the volume control buttons on the sides of the speaker or through the app/voice control.
4. Play or pause music by pressing the play/pause button on the speaker or through the app/voice control.
5. To skip to the next song, swipe right on the touch controls. To go to the previous song, swipe left. Note that skipping forward or going back is not possible when listening to a radio station.
6. Tap the microphone button to turn the microphone on or off. When the microphone light is on, you can use voice control and microphone-dependent features. When it is off, these features are unavailable.
7. Check the status lights to monitor the connection to WiFi or Bluetooth, volume mute status, battery status, and any error signals.
8. Use the power button to turn the Move on, put it to sleep, or power it off. When not in use and off the charging base, it automatically goes to sleep to save battery. Press the power button# to wake it up.
9. During setup, press the join button to connect the Move to your Sonos system.
10. The handle on the speaker allows for easy lifting and carrying so that you can take it wherever you go.
11. When Move is off the charging base, you can use a compatible USB-C charger for charging on the go.
12. Remember that Move's remaining battery life is always visible in the Sonos app.

Overview



Move is a durable, battery-powered smart speaker for indoor and outdoor listening

- The rechargeable battery lasts up to 10 hours. Easily recharge by just setting Move on the charging base—no plugs or extra wires required. For power on the go, use a compatible USB-C charger (sold separately).
- The weatherproof design is ideal for barbecues, pool parties, and more.
- Stream content over WiFi or Bluetooth®.
- Freedom of control using the Sonos S2 or Sonos S1 app, the touch controls on the speaker, or your voice.
- Compatible with all your other Sonos speakers for multi-room listening.
- See Setup when you're ready to add Move to your Sonos System.

Controls and lights

- Volume up (right)
- Volume down (left)

Volume control



Touch and hold to quickly change the volume.

Note: You can also use the Sonos app and voice control to adjust the volume.

Play/Pause



- Press once to play or pause music.
- Press and hold to add the music that's playing in another room.



Note: You can't skip forward or go back when listening to a radio station.


Tap to turn the microphone on or off:

- When the microphone light is on, voice control and microphone-dependent features like auto Trueplay are available.
- When the light is off, voice control and microphone-dependent features like auto Trueplay are unavailable.

Microphone



Note: If you've installed a voice service and the microphone is off, you can still use voice commands. Just press

and hold  — no need to start with a wake word. When you release the microphone button, voice control turns off again.

Status light



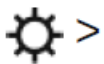
Displays the product's connection to WiFi or Bluetooth, indicates when the volume is muted, and signals errors. Learn more Indicates the battery status:

- Blinking orange indicates low battery.
- Solid orange when it starts charging. The light may stay on for several minutes depending on how low the battery is. The battery will continue to charge when the light turns off.

Battery light



Battery Saver: To save battery life, you can set Move to power off automatically instead of going to sleep. Go to

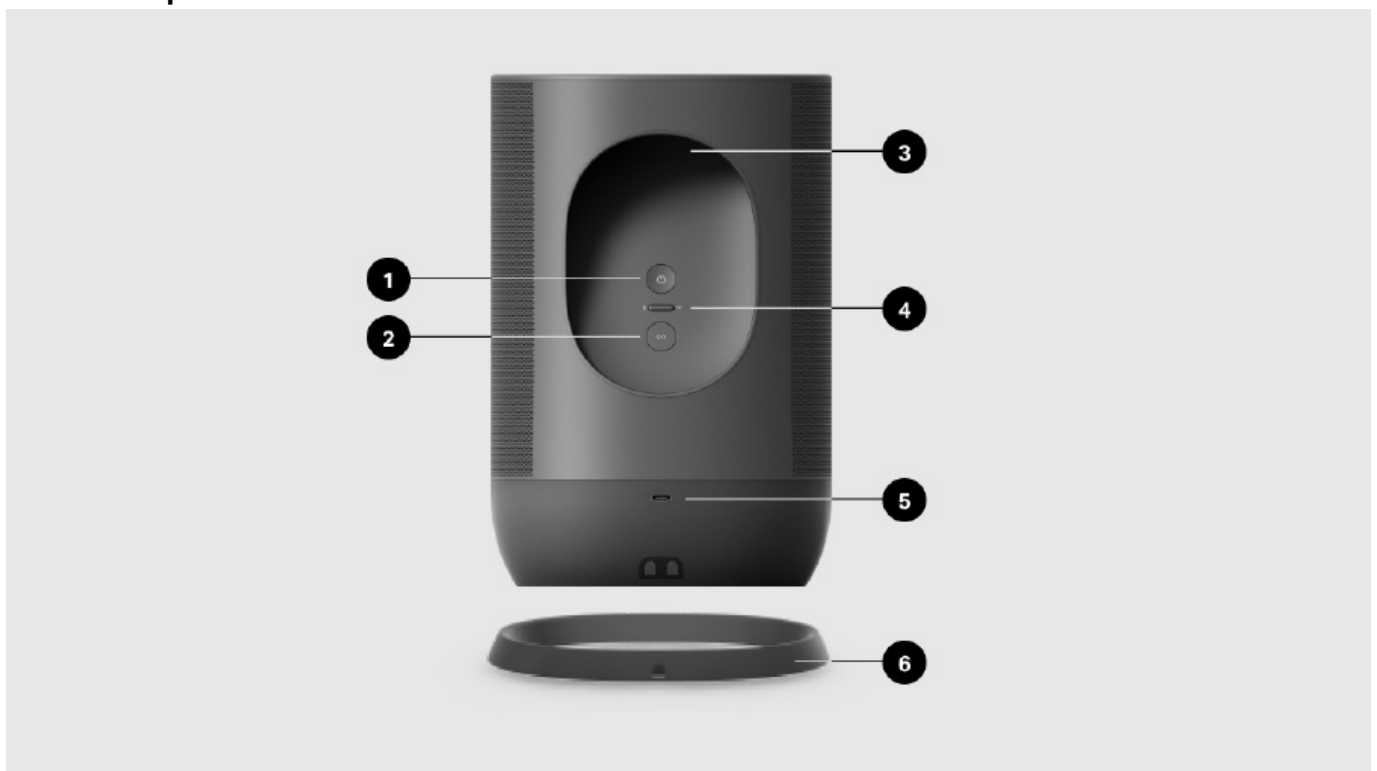


System, and select Move. It won't appear in the Sonos app until it's powered back on.

Note: Move's remaining battery life is always visible in the Sonos app.

Note: If you don't want to allow playback or volume adjustments using the speaker touch controls, you can disable them in the room's settings.

Connector panel



Power button

Press to power on, short press to put to sleep, long press (5 seconds) to power off.

If Move is off the charging base, it goes to sleep to save battery when you're not using it. Just press the power button to wake it up.

Join button

Press to connect your Sonos system during setup.

Handle

Allows for easy lifting and carrying so you can take the speaker wherever you go.

Bluetooth/WiFi toggle button

Toggles between Bluetooth and WiFi. Use WiFi for setup, and stream content over WiFi or Bluetooth®.

USB-C port

Use a compatible USB-C charger for charging on the go.

- The USB port may also be used for diagnostic purposes. (It can't play large data files, like some music files.)

Note: USB-C cable not included.

Charging dock (included)

Set Move on the charging base for easy recharging—no extra wires or cables needed.

Select a location

You can put your speaker just about anywhere. For maximum performance, here are a few guidelines:

- Move sounds great even when placed next to a wall or on a shelf. For best performance, leave at least 1" (2.5cm) space around the back of the speaker.
- It's ultra durable. With a tough outer shell and IP56 rating, Sonos Move is built to withstand falls, bumps, moisture, dust, UV rays, and extreme temperatures. Just don't leave it out in a rainstorm, and remember that the included charging base is for indoor use only.
- When the microphone is on, the speaker tunes itself with automatic Trueplay™ for amazing sound no matter where you are and what you're listening to.
- Don't use or store your Sonos Move upside down.

Bluetooth pairing

1. Turn Bluetooth on in your device settings.
2. Press the mode button on the back of Move to switch to Bluetooth.
3. Choose Move from the list of available devices in your Bluetooth settings. If it's not there, press and hold the mode button and choose Move from the list when it appears. You'll hear a confirmation tone when your device is paired with Move. They'll automatically connect next time you switch Move to Bluetooth.

Switch modes

Set Move up on your WiFi, then use the mode switch on the back of Move to switch between Bluetooth and WiFi. When you use Bluetooth for the first time, you'll need to pair Move with your device. Put it into Bluetooth mode and your mobile device will automatically connect next time.

Charging

Charging base

Just set Move on its charging base for easy recharging—no extra wires or cables needed. Make sure the speaker is seated properly in the base and the charging contacts are touching. The charging base is for indoor use only—be sure to keep it dry.

Tip: Move's remaining battery life is always visible in the Sonos app.


USB-C port

For charging on the go.

Use a compatible USB-C charger (type C PD power with 45W, 20V/2.25A)

Microphone on/off

The microphone is used for voice control and for microphone-dependent features like Trueplay tuning. Press

 to turn the microphone on or off—the microphone LED light will let you know when your voice assistant is listening. **When the microphone light is on:**

- If you set up a voice service, voice control is on and ready to respond.
- Microphone-dependent features like Trueplay are available.

When the microphone light is off:

If you set up a voice service, voice control is off.

Microphone-dependent features like Trueplay are unavailable.

Voice services

Use your voice to control your Sonos system with any voice-enabled Sonos product—play and control content, turn the volume up or down, and more.

Sonos Voice Control: Control your whole Sonos system with hands-free ease and unmatched privacy. Sonos Voice Control comes ready to use—it only takes a few seconds to add when you set up your speakers. More information

Amazon Alexa: you'll need the Sonos app and the Alexa app with the Sonos skill enabled. You'll make some changes in both apps during setup. Learn more


Google Assistant: you'll need the Sonos app and the Google Assistant app. You'll make some changes in both apps during setup. Learn more

Siri: You'll need the Apple Home app. Add your AirPlay2-compatible Sonos speakers to the Apple Home app and then use an iPhone, iPad, or Apple TV to ask Siri to play music (currently limited to Apple Music). Learn more

Note: Voice control isn't supported in every country yet—this feature will be available as soon as Sonos and a voice service launch together in your region.

Trueplay™

Every room is different. Trueplay tuning measures how sound reflects off walls, furnishings, and other surfaces in a room, then fine-tunes your Sonos speaker to make sure it sounds great no matter where you've placed it. Trueplay works on iOS mobile devices running iOS 8 or later. During tuning, you'll move around the room holding your mobile device.


Select  > System, and pick the room you want to tune.

Choose **Trueplay Tuning** to get started.

Note: Trueplay tuning isn't available if VoiceOver is enabled on your iOS device. Turn VoiceOver off in your device settings before tuning your speakers.

Auto Trueplay

Portable Sonos products like Sonos Roam and Move can tune themselves automatically. Auto Trueplay uses your speaker's microphone to detect the environment and make periodic tuning adjustments so you get great sound wherever your speaker is and whatever you're listening to.


Go to  > System, and select your portable speaker to turn on auto Trueplay.

Set up stereo pair

Pair two Sonos speakers in the same room for an even wider, stereo experience. One speaker serves as the left channel and one serves as the right channel.

Note: The Sonos speakers in a stereo pair must be the same type.

1. Place the speakers 8 to 10 feet apart. Your favorite listening position should be 8 to 12 feet from the paired speakers—less distance increases bass, and more distance improves stereo imaging.

2. Go to  > System.

3. Select one of the speakers you want to use in the stereo pair, then choose Set Up Stereo Pair to get started.

Product settings

You can customize Sonos products for your surroundings. Go to  > System and select a product

Room Name

If you move your speaker to a new room, you can change its name in Settings.

Turn off WiFi

(not available for Sonos Era 100, Era 300, or portable products)

You can turn off your speaker's WiFi when it's connected to your network with an Ethernet cable. This reduces power consumption and can improve connectivity for wired speakers.

For products like Amp and Port, turning off WiFi can reduce the internal temperature when they're placed in a rack or stacked. [Learn more](#)

Note: WiFi is turned off for Era 100 and Era 300 when you connect a Sonos **Combo Adapter** using the Ethernet cable.

EQ

Sonos products ship with preset equalization settings. You can change the sound settings (bass, treble, balance,

or loudness) to suit your personal preferences. [Learn more](#)

Trueplay

Trueplay adapts the sound for your surroundings and content. Portable products can tune themselves automatically. [Learn more](#)

Volume Limit

You can set a maximum volume for each room. [Learn more](#)

Status Light

Displays the speaker's connection to WiFi, indicates when the volume is muted, and signals errors. [Learn more](#)

Note: If the light is distracting, you can turn it off in Settings.

Touch Controls

You can disable the touch control on your speaker. You may want to do this to prevent a child or curious pet from accidentally adjusting playback or volume. [Learn more](#)

Battery Saver

(portable products only)

To save battery life, you can set your portable speaker to power off automatically instead of going to sleep. It won't appear in the Sonos app until it's powered back on.

When a projector, turntable, stereo, or other audio device is connected to a Sonos product, you can adjust these line-in settings:

Line-In

(Sonos products with line-in capability)(Sonos products with line-in capability)

- **Source name:** Choose a name for the line-in device.
- **Source level:** Adjust the line-in source level if you find the default volume setting is too quiet or distorted.
- **Audio Delay:** Add a delay between the line-in source and Sonos to reduce the chance of audio issues occurring when you're playing line-in audio on grouped speakers.
- **Autoplay:** Choose a room if you want line-in audio to start playing automatically when Sonos detects a signal on the line-in port. (Autoplay is disabled by default.)

Specifications

Feature/Description

- **Audio**
- **Amplifier:** Two Class-D digital amplifiers.
- **Tweeter:** One tweeter creates a crisp and accurate frequency response.
- **Mid-woofer:** One mid-woofer ensures the faithful playback of mid-range vocal frequencies plus deep, rich

bass.

- **Microphones:** Far-field microphone array.

Microphone LED, hard-wired to the voice microphones for extra privacy control so you're always aware when the microphone is active.

- **Voice:** Integrated voice control.

- **NETWORKING**

- **Wireless connectivity:** Connects to WiFi network with any 802.11 a/b/g/n 2.4 or 5GHz broadcast-capable router

- **GENERAL**

- **Power supply: Charging base:** 100-240VAC, ~50/60Hz, 1.2A. **Output:** 18.0VDC, 2.5A, 45.0W
- **USB port:** USB-C PD power with 45W, 20V/2.25A.
- **Battery pack: Capacity:** 2420-2500mAh
- **Replacement:** Visit our website for more information.
- **Disposal:** Check with your local waste recycling company to determine the proper disposal method in your area.
- **Dimensions (H x W x D):** 9.44 x 6.29 x 4.96in (240 x 160 x 126mm)
- **Weight:** 6.61lb (3.0kg) (including the battery)
- **Operating temperature:** 32 to 113 F (0 to 45 C)
- **Storage temperature:** 13 to 158 F (- 25 to 70 C)
- **Humidity resistant:** Move meets IP56 water and dust resistance levels. Just don't leave it out in a soaking rainstorm.
- **Note:** The charging base included with Move is for indoor use only.
- **Product finish:** Black with black grille, white with white grille
- **Package contents:** Sonos Move, charging base, and Quickstart guide.

Important safety information

Caution: Danger of explosion if battery is incorrectly replaced. Replace only with the same or equivalent type.

1. Read these instructions.
2. Keep these instructions.
3. Heed all warnings.
4. Follow all instructions.
5. Clean only with a dry soft cloth. Household cleaners or solvents can damage the finish on your Sonos products.

Sonos products with rubber rings on the bottom, such as Move, One, and One SL, may leave a faint ring on some surfaces treated with polyurethane. This ring can be easily removed by wiping with a damp cloth.

6. Do not block any ventilation openings. Install in accordance with the manufacturer's instructions.
7. Do not install near any heat sources such as radiators, heat registers, stoves, or other apparatus that produce heat.
8. Do not expose batteries (battery pack or batteries installed) to excessive heat such as sunshine or fire.
9. Protect the power cable from being walked on or pinched, particularly at plugs, convenience receptacles, and the point where they exit from the apparatus.
10. Only use attachments/accessories specified by the manufacturer.

11. Unplug this apparatus during lightning storms or when unused for long periods of time.
12. Refer all servicing to Sonos qualified service personnel. Servicing is required when the apparatus has been damaged in any way, such as power-supply cable or plug is damaged, liquid has been spilled or objects have fallen into the apparatus, the apparatus has been exposed to heavy rain or moisture, does not operate normally, or has been dropped.
13. The Mains plug should be readily available to disconnect the equipment.

Warning: Sonos Move meets IP56 water resistance levels. To reduce the risk of fire or electric shock, don't expose this apparatus to a soaking rainstorm.

Documents / Resources

	<p>SONOS MOVE Portable WiFi and Bluetooth Speaker [pdf] User Guide</p> <p>03, MOVE Portable WiFi and Bluetooth Speaker, Portable WiFi and Bluetooth Speaker, WiFi and Bluetooth Speaker, Bluetooth Speaker, Speaker</p>
---	---

References

- [Adjust the bass, treble, balance, and loudness | Sonos](#)
- [Sonos LED lights | Sonos](#)
- [Setting a volume limit on Sonos products | Sonos](#)
- [Set up an Amazon Alexa device to control Sonos | Sonos](#)
- [Use Siri to control Sonos speakers | Sonos](#)
- [Create a stereo pair | Sonos](#)
- [Set up a Google Assistant device to control Sonos | Sonos](#)
- [Disable or enable Wi-Fi on your Sonos products | Sonos](#)
- [Using touch controls on Sonos products | Sonos](#)
- [Tune your Sonos speakers with Trueplay | Sonos](#)