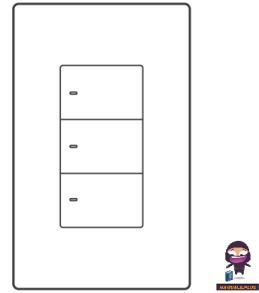


**SONOFF®
Zigbee Smart
Wall Switch**



SONOFF Zigbee Smart Wall Switch User Guide

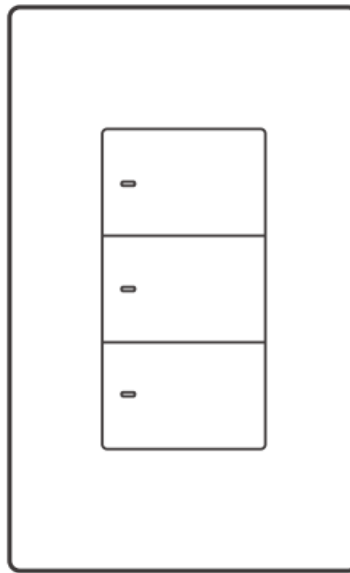
[Home](#) » [SonOFF](#) » SONOFF Zigbee Smart Wall Switch User Guide 

Contents

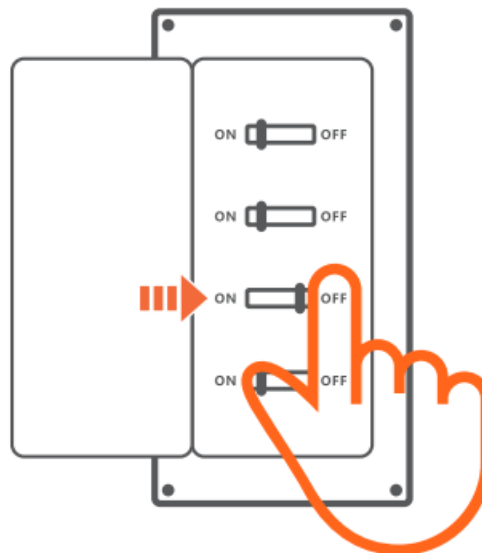
- [1 SONOFF Zigbee Smart Wall Switch](#)
- [2 Power off](#)
- [3 Wiring instruction](#)
- [4 Power on](#)
- [5 Scan the QR Code to Add the Device](#)
- [6 Installation](#)
- [7 EU Declaration of Conformity](#)
- [8 Documents / Resources](#)
 - [8.1 References](#)



SONOFF Zigbee Smart Wall Switch



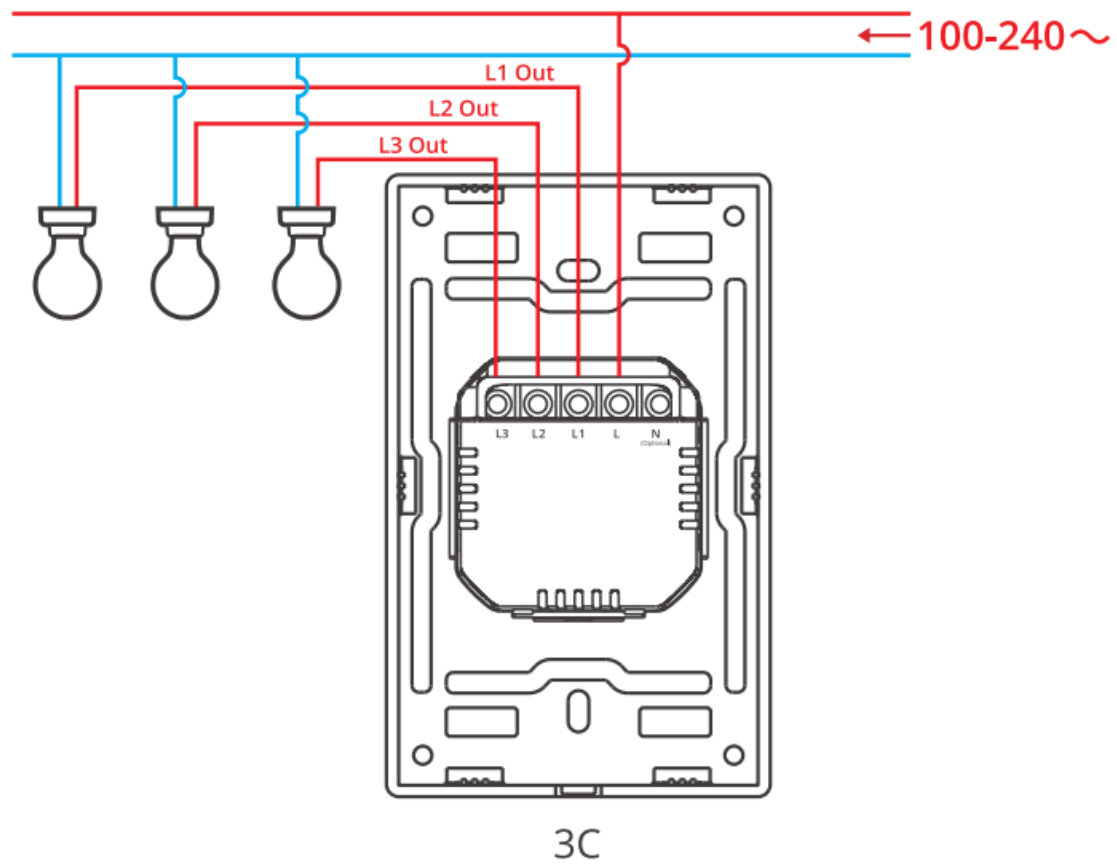
Power off



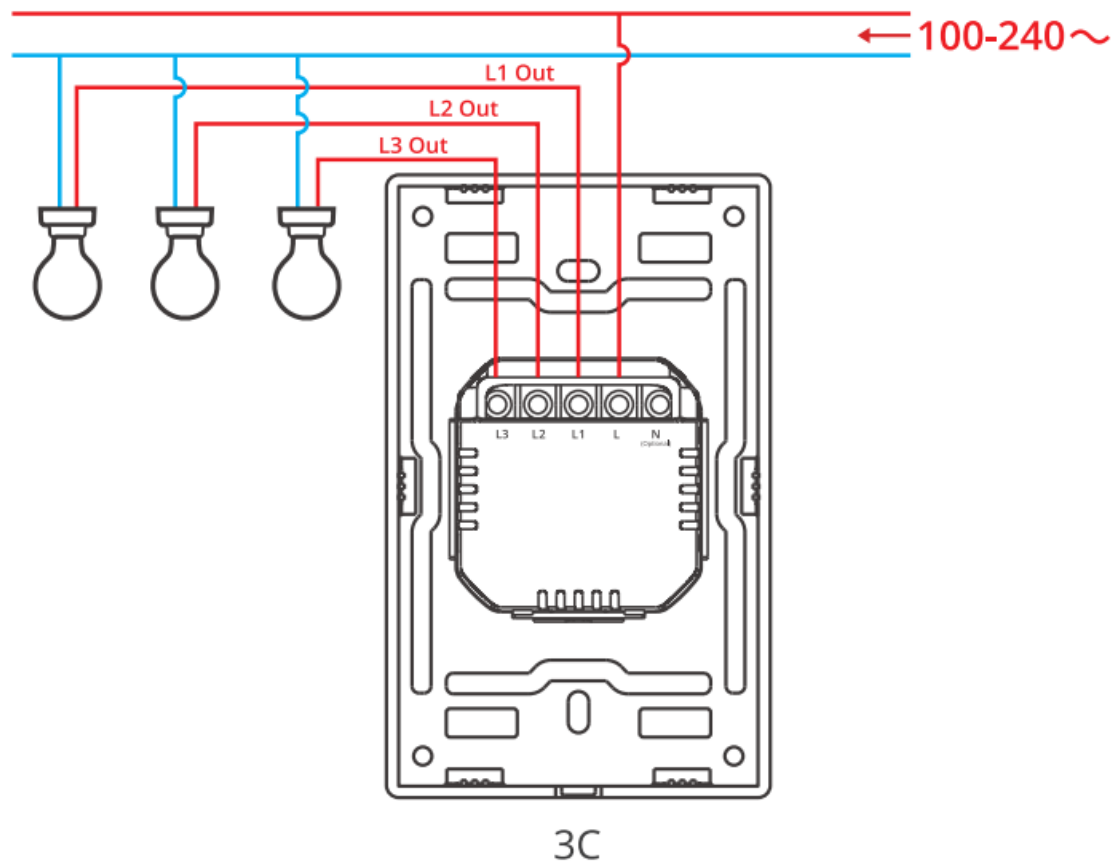
WARNING: Please install and maintain the device by a professional electrician. To avoid electric shock hazard, do not operate any connection or contact the terminal connector while the device is powered on!

Wiring instruction

No neutral required mode wiring



Neutral required mode wiring

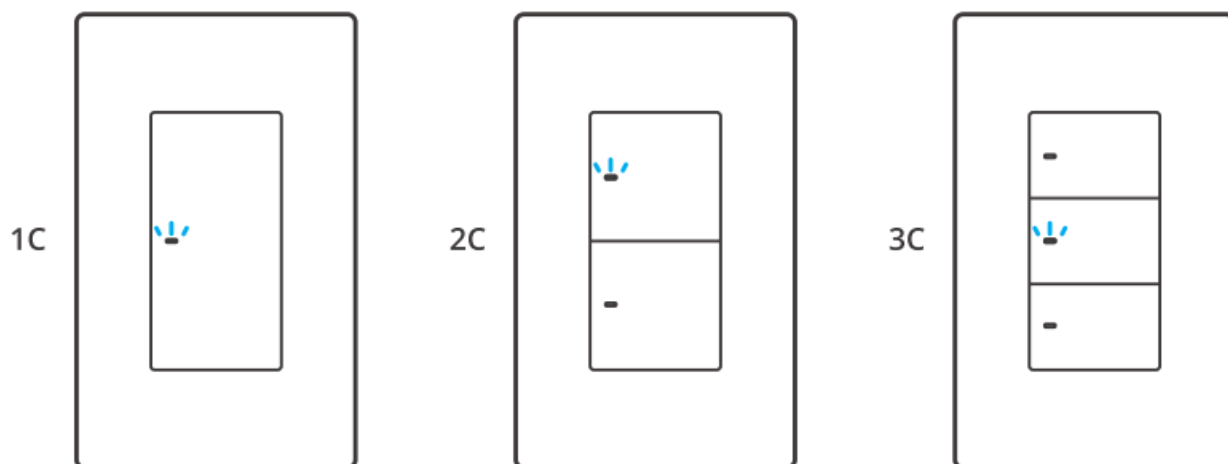


1. Choose no neutral required mode or neutral required mode according to your home's wiring.
2. In no neutral required mode: the minimum supported load is 3W, and this device does not support other types of inductive loads such as fans.

3. Make sure all wires are connected correctly.

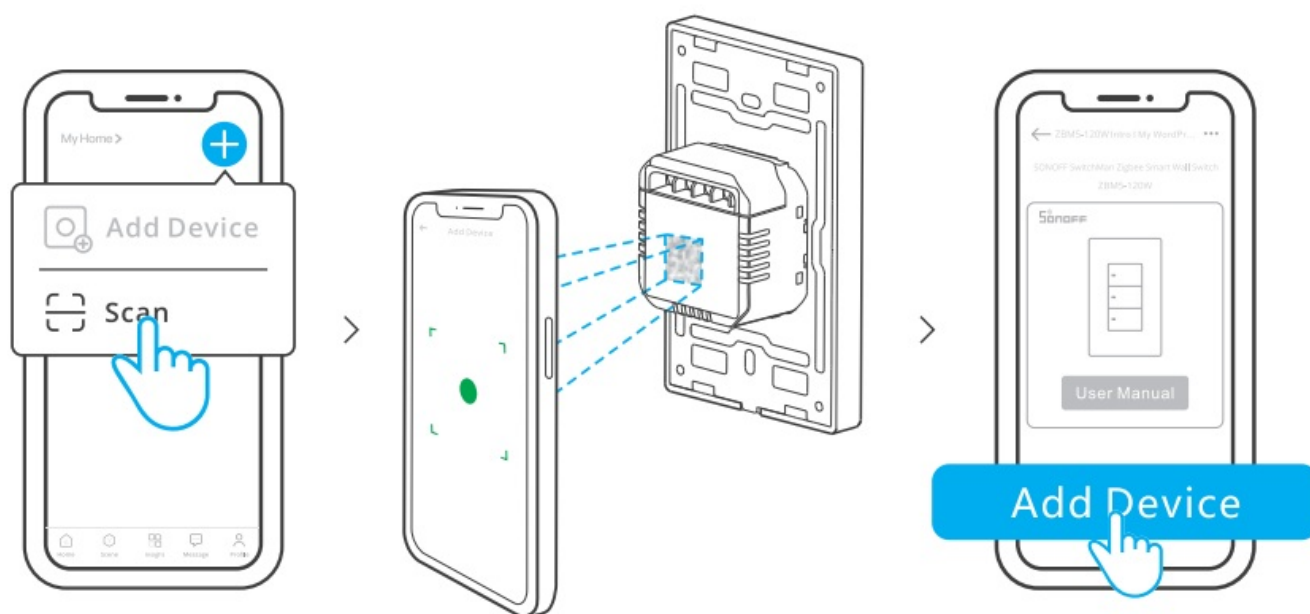
Download the eWeLink App & Add the SONOFF Zigbee gateway.

Power on



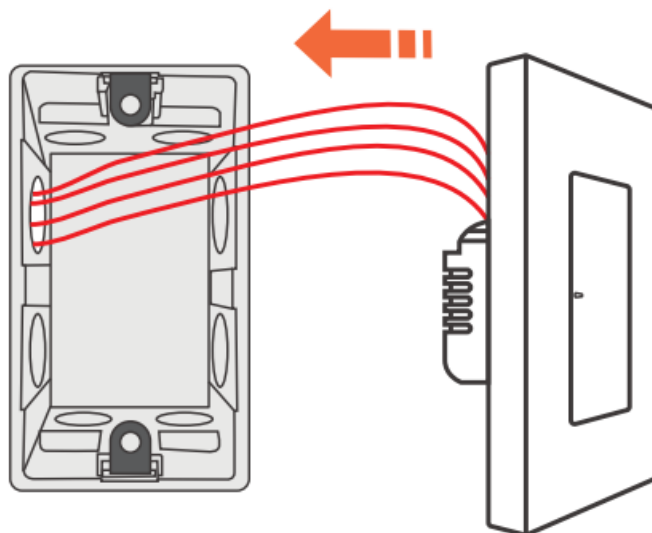
After powering on, the device will enter the pairing mode defaulted during the first use and the LED signal indicator will “flash slowly”.

Scan the QR Code to Add the Device



Open the eWeLink App and scan the QR code on the device, then follow the instructions given by the app to proceed.

Installation



Enter the website provided above to view the User Manual for the device.

<https://sonoff.tech/usermanuals>

EU Declaration of Conformity

Hereby, Shenzhen Sonoff Technologies Co., Ltd. declares that the radio equipment type ZBM5-1C-120W, ZBM5-2C-120W, ZBM5-3C-120W is in compliance with Directive 2014/53/EU. The full text of the EU declaration of conformity is available at the following internet address: <https://sonoff.tech/compliance/>

For CE frequency

- **EU Operating Frequency Range**

Zigbee: 2405-2480 MHz

- **EU Output Power**

Zigbee≤10dBm

Scatola	Scatola	Manuale	Borsa	Borsa
PAP 20	PAP 21	PAP 22	CPE 7	LDPE 4
Carta	Carta	Carta	Plastica	Plastica
RACCOLTA DIFFERENZIATA				
Verifica le disposizioni del tuo Comune. Separa le componenti e conferiscile in modo corretto.				

- **Pollution degree:** 1I
- **Rated impulse voltage:** 4KV
- **Automatic action:** 20000 Cycles
- **Control Type:** 1. B
- **Operating temperature:** 1040

- **Operating altitude:** 2000M

Warning

Under normal use of condition, this equipment should be kept a separation distance of at least 20 cm between the antenna and the body of the user.

FCC compliance statement

1. This device complies with part 15 of the FCC Rules. Operation is subject to the following two conditions:
 1. This device may not cause harmful interference, and
 2. This device must accept any interference received, including interference that may cause undesired operation.
2. Changes or modifications not expressly approved by the party responsible for compliance could void the user's authority to operate the equipment.

Note: This equipment has been tested and found to comply with the limits for a Class B digital device, pursuant to part 15 of the FCC Rules. These limits are designed to provide reasonable protection against harmful interference in a residential installation. This equipment generates, uses and can radiate radio frequency energy and, if not installed and used in accordance with the instructions, may cause harmful interference to radio communications.

However, there is no guarantee that interference will not occur in a particular installation. If this equipment does cause harmful interference to radio or television reception, which can be determined by turning the equipment off and on, the user is encouraged to try to correct the interference by one or more of the following measures:

- Reorient or relocate the receiving antenna.
- Increase the separation between the equipment and receiver.
- Connect the equipment into an outlet on a circuit different from that to which the receiver is connected.
- Consult the dealer or an experienced radio/TV technician for help.

FCC Radiation Exposure statement:

This equipment complies with FCC radiation exposure limits set forth for an uncontrolled environment. This equipment should be installed and operated with minimum distance of 20 cm between the radiator and your body. This transmitter must not be co-located or operating in conjunction with any other antenna or transmitter.

FCC ID: 2APN5ZBM5120W

WEEE Disposal and Recycling Information

All products bearing this symbol are waste electrical and electronic equipment (WEEE as in directive 2012/19/EU) which should not be mixed with unsorted household waste. Instead, you should protect human health and the environment by handing over your waste equipment to a designated collection point for the recycling of waste electrical and electronic equipment, appointed by the government or local authorities. Correct disposal and recycling will help prevent potential negative consequences to the environment and human health. Please contact the installer or local authorities for more information about the location as well as terms and conditions of such collection points.

Shenzhen Sonoff Technologies Co., Ltd.

- 3F & 6F, Bldg A, No. 663, Bulong Rd, Shenzhen, Guangdong, China
- **ZIP code:** 518000

- Website: sonoff.tech
- Service email: support@itead.cc

MADE IN CHINA

Documents / Resources



[SONOFF Zigbee Smart Wall Switch](#) [pdf] User Guide
Zigbee Smart Wall Switch, Zigbee, Smart Wall Switch, Wall Switch, Switch

References

- [User Manual](#)

[Manuals+](#), [Privacy Policy](#)

This website is an independent publication and is neither affiliated with nor endorsed by any of the trademark owners. The "Bluetooth®" word mark and logos are registered trademarks owned by Bluetooth SIG, Inc. The "Wi-Fi®" word mark and logos are registered trademarks owned by the Wi-Fi Alliance. Any use of these marks on this website does not imply any affiliation with or endorsement.