

**SONOFF
Zigbee Bridge
Ultra Gateway**



SONOFF Zigbee Bridge Ultra Gateway User Manual

[Home](#) » [SonOFF](#) » SONOFF Zigbee Bridge Ultra Gateway User Manual 

Contents

- [1 SONOFF Zigbee Bridge Ultra Gateway](#)
- [2 Product Information](#)
- [3 Product Usage Instructions](#)
- [4 Introduction](#)
- [5 Specification](#)
- [6 Add Device](#)
- [7 Add Zigbee Sub-devices](#)
- [8 Sync to Matter Platform](#)
- [9 FCC Compliance Statement](#)
- [10 Declaration of Conformity](#)
- [11 Disposal and Recycling Information](#)
- [12 Documents / Resources](#)
 - [12.1 References](#)
- [13 Related Posts](#)



SONOFF Zigbee Bridge Ultra Gateway



Product Information

Specifications:

- **Model:** ZBBridge-U RV1109+EFR32MG21
- **MCU:** Input Wireless connection Power supply interface type Network interface type Net weight Product dimension Color Casing materials Applicable place Working temperature Working humidity Working height Certification Executive standard
- **5V 1A Wi-Fi:** IEEE 802.11b/g/n 2.4GHz, Zigbee 3.0
- **Type-C RJ45:** (10/100Mbps)
- **Net weight:** 92.5g (Accessories not included)
- **Product dimensions:** 82x82x28mm
- **Color:** White
- **Casing materials:** PC+ABS
- **Applicable place:** Indoor
- **Working temperature:** -10°C to 40°C
- **Working humidity:** 5% to 95% RH, non-condensing
- **Working height:** Less than 5000m
- **Certification:** CE/FCC/ISED/RoHS EN 62368-1
- **Executive standard:** EN 62368-1 standard, with an output range of PS2 and ES1

Product Usage Instructions

Add Device

1. **Download the eWeLink App:** Please download the eWeLink App from Google Play Store or Apple App Store.
2. **Scan QR Code to Add Device:**
 - Enter Scan.
 - Scan the QR code on the device.
 - Select Add Device.

- Power on plug in the Type-C charger cable and network cable.

3. Device Startup:

- The device is starting up (Blue-green LED flashes alternately), and when you hear a beep, it means the startup is done.
- Long press the button for 3 seconds.
- Check Wi-Fi LED indicator flashing status: Yellow flashing slowly.
- Wait for the device to be found and connected.
- The device was added completely.

Add Zigbee Sub-devices

To add Zigbee sub-devices, put the Zigbee sub-device into Pairing mode, then click on + Add Device on the gateway interface, and wait for the search to complete to add the sub-device. ZBBridge-U only supports adding SONOFF and eWeLink ecosystem Zigbee sub-devices.

Sync to Matter Platform

1. EWeLink App Setup:

- Open the eWeLink App, find the Matter pairing information of the device, and copy the Matter Pairing Code.

2. Add to Third-Party Matter-Compatible App:

- Open the third-party matter-compatible App, find the entrance to add a Matter device, and paste the Pairing Code into it.

FCC Compliance Statement

This device complies with part 15 of the FCC Rules. Operation is subject to certain conditions. Changes or modifications not approved by the responsible party could void the user's authority to operate the equipment.

Frequently Asked Questions (FAQ):

• **Q: What devices are compatible with ZBBridge-U for syncing to the Matter platform?**

A: ZBBridge-U supports syncing SONOFF and eWeLink ecosystem Zigbee sub-devices to the Matter platform.

• **Q: How many Zigbee devices can be managed by ZBBridge-U?**

A: ZBBridge-U can manage up to 256 Zigbee devices.

Introduction

Zigbee Bridge Ultra is a Zigbee 3.0 gateway that enables wired or wireless connections. It supports smart security, voice control, and scene linkage with other devices. Additionally, it acts as a Matter bridge, allowing Zigbee devices to be converted into Matter devices, making it easy to integrate with different smart home products for home automation.



Push Notification



Matter Bridge



Ethernet/Wi-Fi
Connection



Smart Scene



Smart Home Security



Manage Up to 256
Zigbee Devices



Voice Control



Sub-device OTA
Upgrade

1. Power supply interface Type-C

2. Network interface RJ45

3. Button

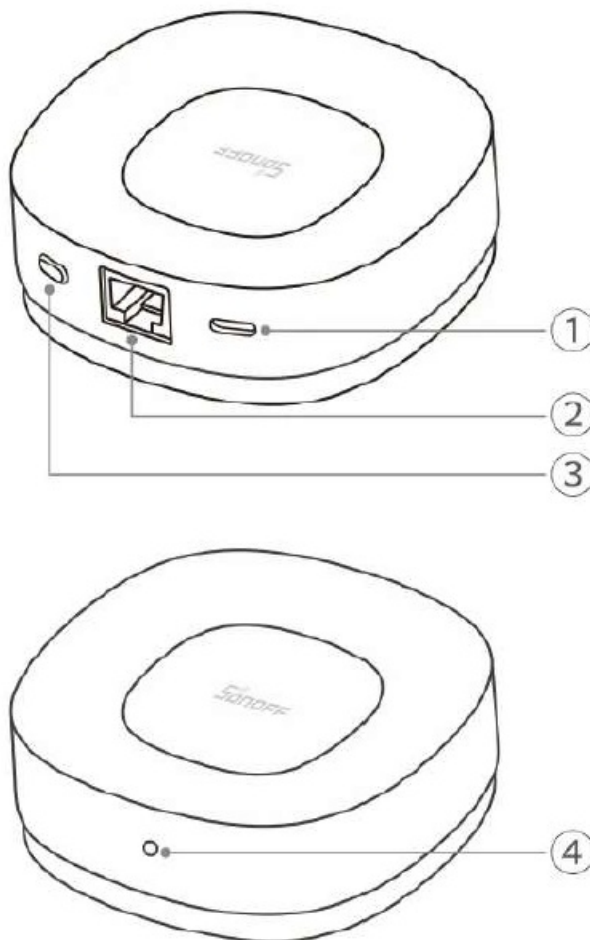
1. **Press and hold for 3 seconds:** The device enters the pairing mode. (Pairing time 30 minutes)

2. **Press and hold for 10 seconds:** Factory Reset

3. **Single press button:** Exit pairing mode; Cancel alarm

4. LED indicator

- **Blue-green flashes alternately:** The device is starting up.
- **Yellow slow flashing:** The device is in eWeLink pairing mode.
- **Solid green:** eWeLink App pairing successful.
- **Red rapid flashing:** Fail to connect to the router.
- **Red slow flashing:** Network pairing failed.
- **Green slow flashing:** The device is in Matter network pairing mode.
- **Red-green-blue flashes alternately:** Factory Mode
- **Blue slow flashing:** Factory Reset



Specification

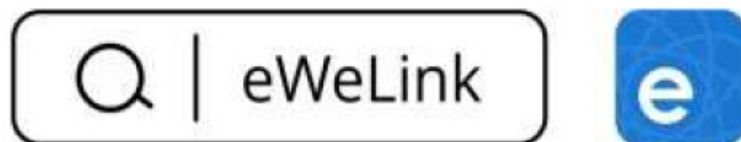
Model	ZBBridge-U
MCU	RV1109+EFR32MG21
Input	5V 1A
Wireless connection	Wi-Fi IEEE 802.11b/g/n 2.4GHz, Zigbee 3.0
Power supply interface type	Type-C
Network interface type	RJ45 (10/100Mbps)
Net weight	92.5g (Accessories not included)
Product dimension	82x82x28mm
Color	White
Casing materials	PC+ABS
Applicable place	Indoor
Working temperature	-10°C~40°C
Working humidity	5%~95% RH, non-condensing
Working height	Less than 5000m
Certification	CE/FCC/ISED/RoHS
Executive standard	EN 62368-1

This product should be powered by a direct current power supply that complies with the EN 62368-1 standard, with an output range of PS2 and ES1.

Add Device

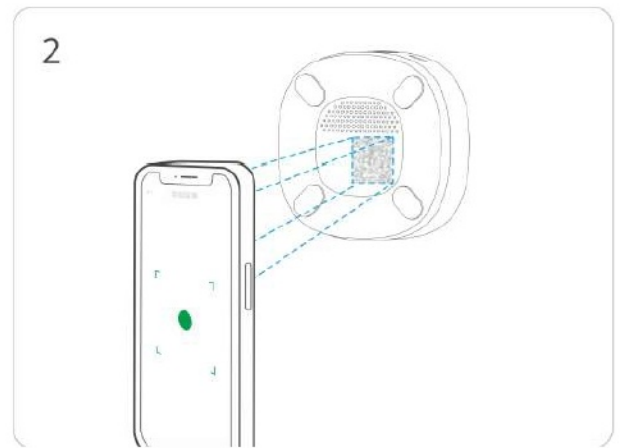
1. Download the eWeLink App

Please download the “eWeLink” App from the Google Play Store or Apple App Store.



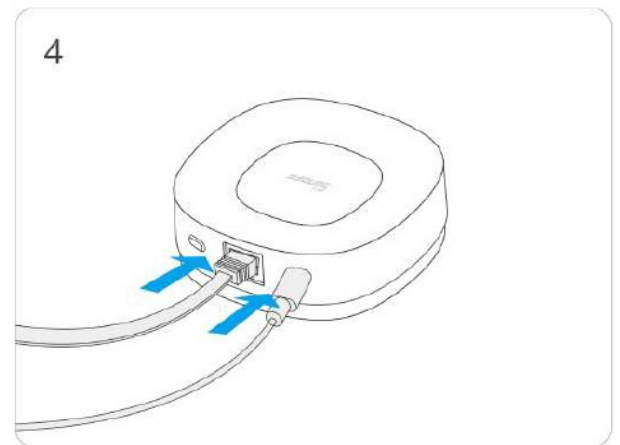
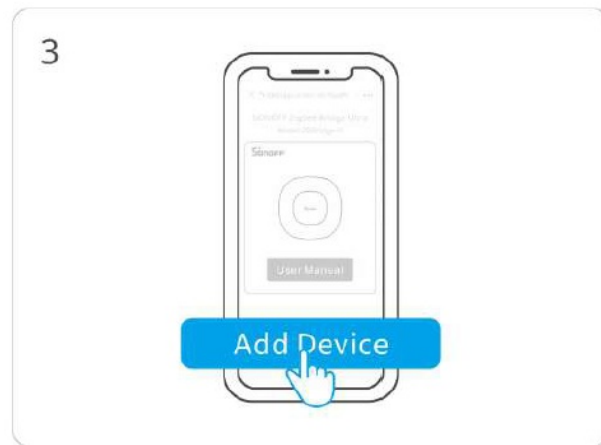
2. Scan the QR Code to Add Device

1. Enter “Scan”.
2. Scan the QR code on the device.



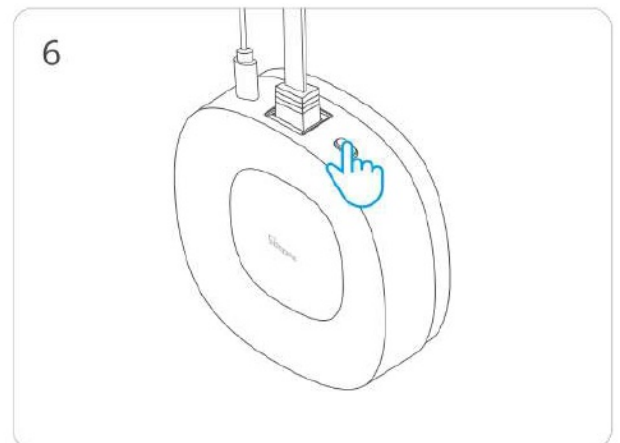
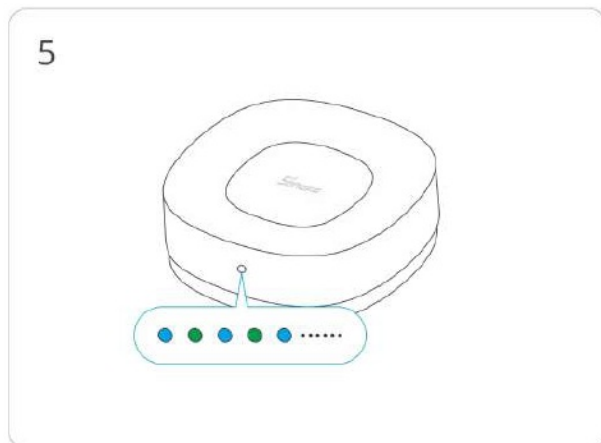
3. Select "Add Device".

4. Power on plug in the Type-C charger cable and network cable).



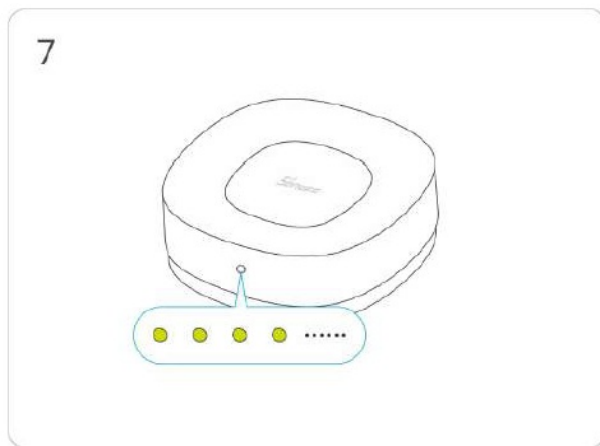
5. The device is starting up (Blue-green LED flashes alternately), and when you hear a beep, it means the startup is done.

6. Long press the button for 3 seconds.



7. Check the Wi-Fi LED indicator flashing status (Yellow flashing slowly)

8. Wait for the device to be found and connected.



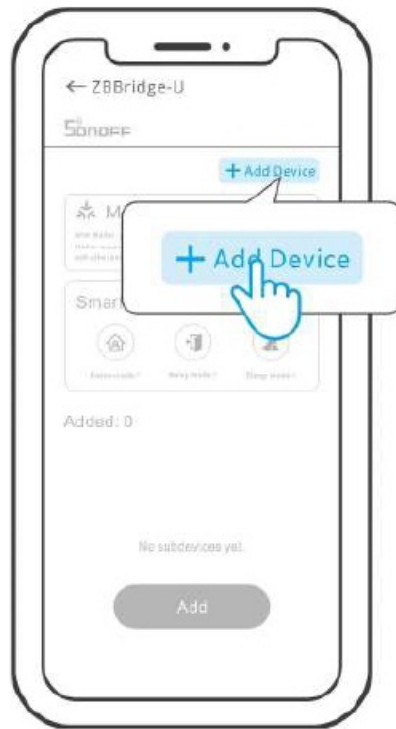
9. Device added completely



When using a wired connection, ensure that your phone is connected to the same Wi-Fi network as the wired connection.

Add Zigbee Sub-devices

First, put the Zigbee sub-device into Pairing mode, then click on “+ Add Device” on the gateway interface, and wait for the search to complete to add the sub-device.

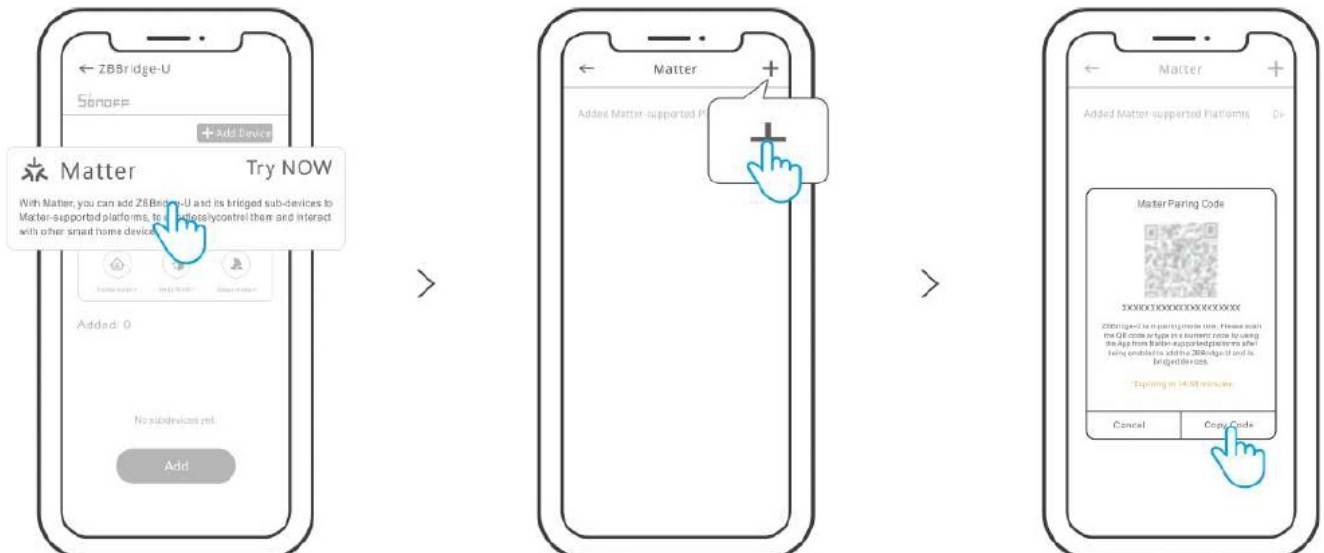


ZBBridge-U only supports adding SONOFF and eWeLink ecosystem Zigbee sub-devices.

Sync to Matter Platform

Please ensure that your Amazon Hub, Google Home Hub, Home Hub, SmartThings Hub, and other devices are compatible with Matter. When setting up this step, you need to connect ZBBridge-U, hub, and mobile phone to the same network.

1. Open the eWeLink App, find the Matter pairing information of the device, and copy the Matter Pairing Code.



2. Open the third-party matter-compatible App, find the entrance to add a Matter device, and paste the Pairing Code into it.



Add to Apple via
Matter



Add to Google via
Matter



Add to Alexa via
Matter



Add to SmartThings
via Matter

This function only supports syncing SONOFF and eWeLink ecosystem Zigbee sub-devices to the matter platform.

FCC Compliance Statement

1. This device complies with part 15 of the FCC Rules. Operation is subject to the following two conditions:
 1. This device may not cause harmful interference, and
 2. This device must accept any interference received, including interference that may cause undesired operation.
2. Changes or modifications not expressly approved by the party responsible for compliance could void the user's authority to operate the equipment.

Note:

This equipment has been tested and found to comply with the limits for a Class B digital device, under part 15 of the FCC Rules. These limits are designed to provide reasonable protection against harmful interference in a residential installation. This equipment generates, uses and can radiate radio frequency energy and, if not installed and used per the instructions, may cause harmful interference to radio communications. However, there is no guarantee that interference will not occur in a particular installation. If this equipment does cause harmful interference to radio or television reception, which can be determined by turning the equipment off and on, the user is encouraged to try to correct the interference by one or more of the following measures:

- Reorient or relocate the receiving antenna.
- Increase the separation between the equipment and the receiver.
- Connect the equipment to an outlet on a circuit different from that to which the receiver is connected.
- Consult the dealer or an experienced radio/TV technician for help.

FCC Radiation Exposure Statement:

This equipment complies with FCC radiation exposure limits set forth for an uncontrolled environment.

This equipment should be installed and operated with a minimum distance of 20 cm between the radiator and your body. This transmitter must not be co-located or operating in conjunction with any other antenna or transmitter.

ISED Notice

This device contains license-exempt transmitter(s)/receiver(s) that comply with Innovation, Science, and Economic Development Canada's license-exempt RSS(s). Operation is subject to the following two conditions:

1. This device may not cause interference.
2. This device must accept any interference, including interference that may cause undesired operation of the device.

This Class B digital apparatus complies with Canadian ICES-003(B). This device complies with RSS-247 of Industry Canada. Operation is subject to the condition that this device does not cause harmful interference.

ISED Radiation Exposure Statement

This equipment complies with ISED radiation exposure limits set forth for an uncontrolled environment.

This equipment should be installed and operated with a minimum distance of 20 cm between the radiator and your body. This transmitter must not be co-located or operating in conjunction with any other antenna or transmitter.

SAR Warning

Under normal use of conditions, this equipment should keep a separation distance of at least 20 cm between the antenna and the body of the user.

Declaration of Conformity

EU Declaration of Conformity

Hereby, Shenzhen Sonoff Technologies Co., Ltd. declares that the radio equipment type ZBBridge-U complies with Directive 2014/53/EU. The full text of the EU Declaration of Conformity is available at the following internet address: <https://sonoff.tech/compliance/>.

For CE Frequency

EU Operating Frequency Range:

- **Wi-Fi:** 802.11 b/g/n20 2412–2472 MHz, 802.11 n40: 2422-2462 MHz
- **BLE:** 2402–2480 MHz
- **Zigbee:** 2405–2480 MHz

EU Output Power:

- Wi-Fi 2.4G≤20dBm
- BLE≤10dBm
- Zigbee≤10dBm

Disposal and Recycling Information

WEEE Disposal and Recycling Information

WEEE Disposal and Recycling Information All products bearing this symbol are waste electrical and electronic equipment (WEEE as in directive 2012/19/EU) which should not be mixed with unsorted household waste. Instead, you should protect human health and the environment by handing over your waste equipment to a designated collection point for the recycling of waste electrical and electronic equipment, appointed by the government or local authorities. Correct disposal and recycling will help prevent potential negative consequences to the environment and human health. Please contact the installer or local authorities for more information about the location as well as the terms and conditions of such collection points.


Box	Neto	Box	Manual	Bag
PAP 20	PAP 20	PAP 21	PAP 22	CPE 7
Carta	Carta	Carta	Carta	Plastic
WASTE SORTING				
Check the provisions of your Municipality.				
Separate the components and assign them correctly.				

- **Manufacturer:** Shenzhen Sonoff Technologies Co., Ltd.
- **Address:** 3F & 6F, Bldg A, No. 663, Bulong Rd, Shenzhen, Guangdong, China
- **ZIP code:** 518000
- **Website:** sonoff.tech
- **Service email:** support@itead.cc

Made in China.



Documents / Resources

	<p>SONOFF Zigbee Bridge Ultra Gateway [pdf] User Manual</p> <p>ZBBridge-U, RV1109 EFR32MG21, Zigbee Bridge Ultra Gateway, Zigbee Ultra Gateway, Bridge Ultra Gateway, Zigbee Gateway, Gateway</p>
---	---

References

- [User Manual](#)

[Manuals+.](#) [Privacy Policy](#)

This website is an independent publication and is neither affiliated with nor endorsed by any of the trademark owners. The "Bluetooth®" word mark and logos are registered trademarks owned by Bluetooth SIG, Inc. The "Wi-Fi®" word mark and logos are registered trademarks owned by the Wi-Fi Alliance. Any use of these marks on this website does not imply any affiliation with or endorsement.