

Sonoff Zigbee Bridge Pro Hub User Manual

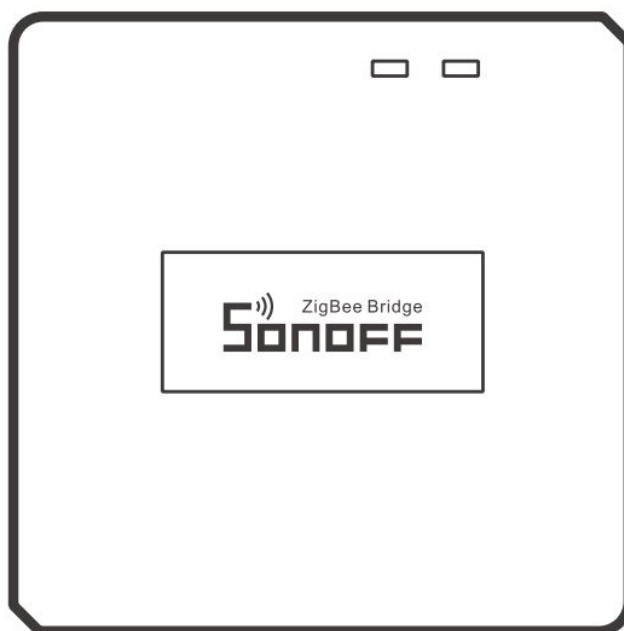
[Home](#) » [SonOFF](#) » Sonoff Zigbee Bridge Pro Hub User Manual 



Contents

- [1 Sonoff Zigbee Bridge Pro Hub User Manual](#)
- [2 Operating Instruction](#)
- [3 Compatible Pairing Mode](#)
- [4 Specifications](#)
- [5 Product Introduction](#)
- [6 LED indicator status instruction](#)
- [7 Features](#)
- [8 Currently supported ZigBee sub-devices](#)
- [9 Delete ZigBee sub-devices](#)
- [10 Factory Reset](#)
- [11 Common Problems](#)
- [12 FCC Warning](#)
- [13 Documents / Resources](#)

Sonoff Zigbee Bridge Pro Hub User Manual



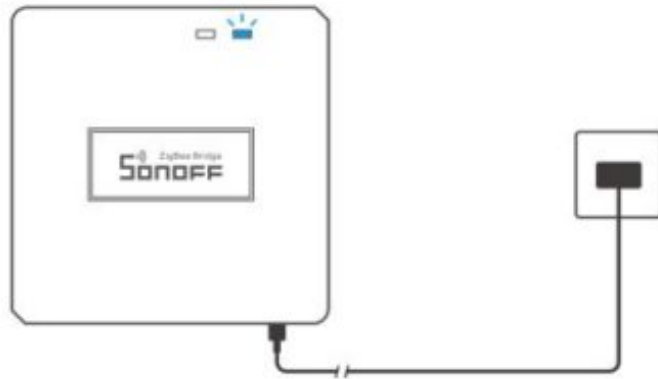
Operating Instruction

1. Download “eWeLink”APP



Android™ & iOS

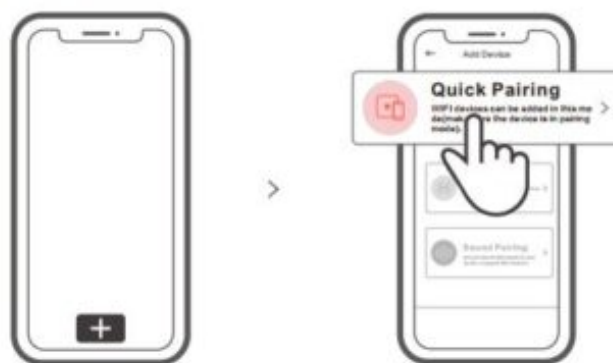
2. Power on



After powering on, the device will enter the quick pairing mode (Touch) during the first use. The Wi-Fi LED indicator changes in a cycle of two short and one long flash.

ⓘ The device will exit the quick pairing mode (Touch) if not paired within 3mins. If you want to enter this mode, please long press the pairing button for about 5s until the Wi-Fi LED indicator changes in a cycle of two short and one long flash and release.

3. Add ZigBee Bridge



Tap "+" and select "Quick Pairing", then operate following the prompt on the APP.

Compatible Pairing Mode

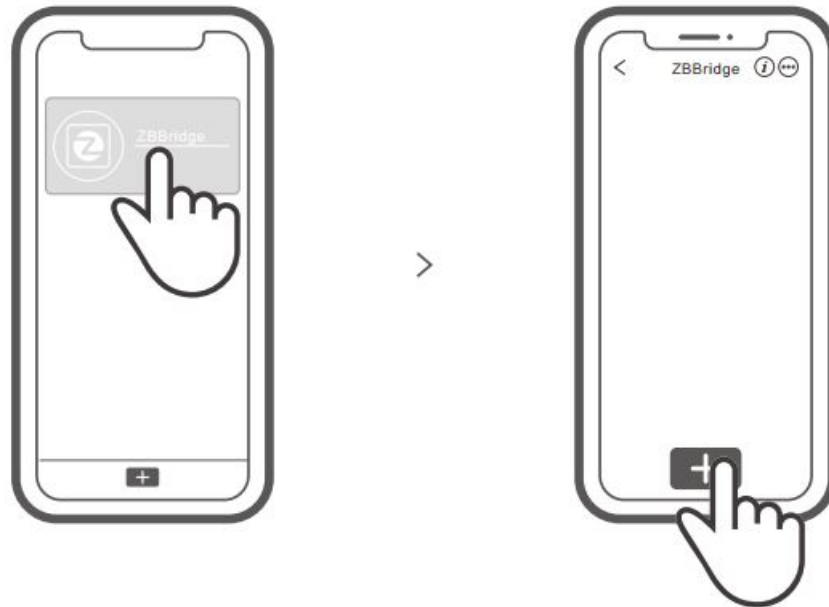
If you fail to enter Quick Pairing Mode (Touch), please try "Compatible Pairing Mode" to pair.

1. Long press Pairing button for 5s until the Wi-Fi LED indicator changes in a cycle of two short flashes and one

long flash and release. Long press Pairing button for 5s again until the Wi-Fi LED indicator flashes quickly. Then, the device enters Compatible Pairing Mode.

2. Tap “+” and select “Compatible Pairing Mode ” on APP. Select Wi-Fi SSID with ITEAD-***** and enter the password 12345678, and then go back to eWeLink APP and tap “Next”. Be patient until pairing completes.

Add a ZigBee sub-device to ZigBee Bridge

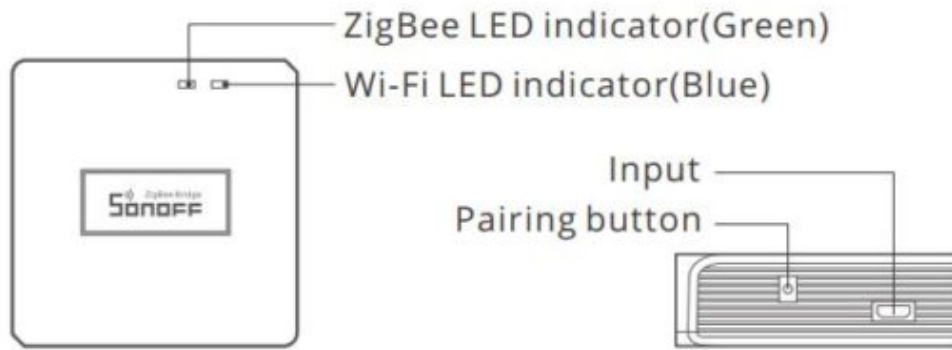


Set the ZigBee sub-device to the pairing mode and tap “+” on ZigBee Bridge to pair. ZigBee Bridge can add up to 32 sub-devices now. It will support adding more sub-devices soon.

Specifications

Model	ZBBridge
Input	5V $\overline{\text{---}}$ 1A
ZigBee	ZigBee 3.0
Wi-Fi	IEEE 802.11 b/g/n 2.4GHz
Operating systems	Android & iOS
Working temperature	-10℃~40℃
Material	PC
Dimension	62x62x20mm

Product Introduction



The device weight is less than 1 kg.
The installation height of less than 2 m is recommended.

LED indicator status instruction

LED indicator status	Status instruction
Blue LED flashes (one long and two short)	Quick Pairing Mode
Blue LED flashes quickly	Compatible Pairing Mode (AP)
Blue LED keeps on	Device is connected successfully
Blue LED flashes quickly once	Unable to discover the router
Blue LED flashes quickly twice	Connect to the router but fail to connect to Wi-Fi
Blue LED flashes quickly three times	Upgrading
Green LED flashes slowly	Searching and adding ...

Features

This is a ZigBee Bridge that allows you to control a variety of ZigBee devices by transforming Wi-Fi into ZigBee. You can remotely turn on/off or schedule on/off connected ZigBee devices, or share it with your family to control them together.

Currently supported ZigBee sub-devices

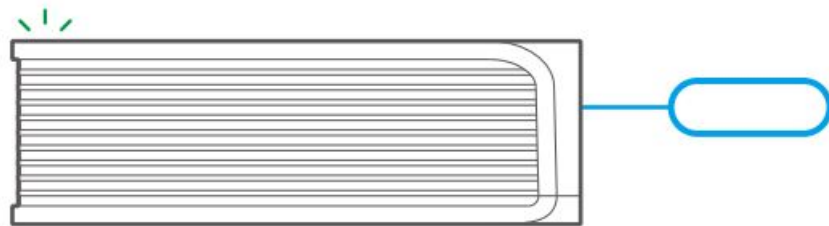
Brands	SONOFF			eWeLink
Model	BASICZBR3 SNZB-01 SNZB-04	ZBMINI SNZB-02 S26R2ZB (TPE/TPG/TPF)	S31 Lite zb SNZB-03	SA-003-UK SA-003-US

The number of supported ZigBee sub-devices will continue to be increased.

The device also supports other ZigBee standard protocol products types, such as wireless door/window sensor, motion sensor, one-gang smart switch, water sensor and temperature & humidity sensor.

Delete ZigBee sub-devices

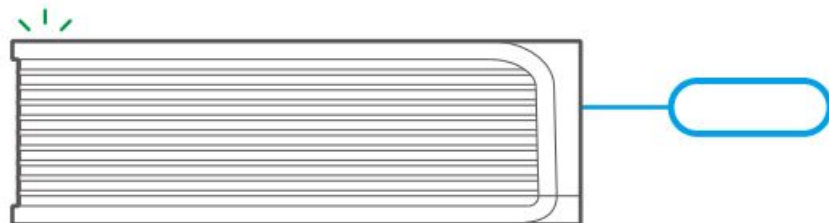
Long press the pairing button for 10s until ZigBee LED signal indicator “flashes twice”, then all paired sub-devices have been deleted.



Users can delete the single sub-device on eWeLink APP.

Factory Reset

Long press the pairing button for about 5s until the Wi-Fi LED indicator changes in a cycle of two short and one long flash and release, then the reset is successful. The device enters quick pairing mode (Touch).



Please reset the device to factory defaults if you want to change the Wi-Fi network, then reconnect the new network.

Common Problems

Q: Why my device stays “Offline”?

A: The newly added device needs 1 – 2mins to connect Wi-Fi and network. If it stays offline for a long time, please judge these problems by the blue Wi-Fi indicator status:

1. The blue Wi-Fi indicator quickly flashes once per second, which means that the switch failed to connect your Wi-Fi:
 - ① Maybe you have entered a wrong Wi-Fi password.
 - ② Maybe there's too much distance between the switch your router or the environment causes interference,

consider getting close to the router. If failed, please add it again.

③ The 5G Wi-Fi network is not supported and only supports the 2.4GHz wireless network.

④ Maybe the MAC address filtering is open. Please turn it off.

If none of the above methods solved the problem, you can open the mobile datanetwork on your phone to create a Wi-Fi hotspot, then add the device again.

2. Blue indicator quickly flashes twice per second, which means your device has connected to Wi-Fi but failed to connect to the server.

Ensure steady enough network. If double flash occurs frequently, which means you access an unsteady network, not a product problem. If thenetwork is normal, try to turn off the power to restart the switch.

FCC Warning

Changes or modifications not expressly approved by the party responsible for compliance could avoid the user's authority to operate the equipment.

This device complies with part 15 of the FCC Rules. Operation is subject to the following two conditions: (1) This device may not cause harmful interference, and (2) this device must accept any interference received, including interference that may cause undesired operation.

FCC Radiation Exposure Statement:

This equipment complies with FCC radiation exposure limits set forth for an uncontrolled environment. This equipment should be installed and operated with minimum distance 20cm between the radiator & your body. This transmitter must not be co-located or operating in conjunction with any other antenna or transmitter.

Note:

This equipment has been tested and found to comply with the limits for a Class B digital device, pursuant to part 15 of the FCC Rules. These limits are designed to provide reasonable protection against harmful interference in a residential installation.

This equipment generates, uses and can radiate radio frequency energy and, if not installed and used in accordance with the instructions, may cause harmful interference to radio communications. However, there is no guarantee that interference will not occur in a particular installation. If this equipment does cause harmful interference to radio or television reception, which can be determined by turning the equipment off and on, the user is encouraged to try to correct the interference by one or more of the following measures:

- Reorient or relocate the receiving antenna.
- Increase the separation between the equipment and receiver.
- Connect the equipment into an outlet on a circuit different from that to which the receiver is connected.
- Consult the dealer or an experienced radio/TV technician for help.

Hereby, Shenzhen Sonoff Technologies Co., Ltd. declares that the radio equipment type ZBBridge is in compliance with Directive 2014/53/EU. The full text of the EU declaration of conformity is available at the following internet address:

<https://sonoff.tech/usermanuals>

TX Frequency:
WiFi 2412-2472MHz
RX Frequency:
WiFi 2412-2472MHz
TX Frequency:
ZigBee 2405-2480MHz
RX Frequency:
ZigBee 2405-2480MHz
Output Power:
6.44dBm(802.11b), 1.63dBm(802.11g), 1.2dBm(802.11n20)
MAX PER
2.24 2405MHz 2.16 2480MHz



Shenzhen Sonoff Technologies Co., Ltd.

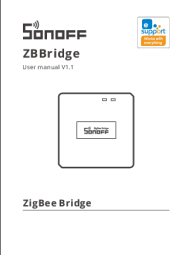
1001, BLDG8, Lianhua Industrial Park, shenzhen, GD, China
ZIP code: 518000 Website: sonoff.tech

MADE IN CHINA



Read More About This Manual & Download PDF:

Documents / Resources

 The image shows the cover of the "Sonoff ZBBridge User Manual V1.1". It features the Sonoff logo at the top, followed by "ZBBridge" and "User manual V1.1". Below this is a small image of the ZBBridge device, and at the bottom, it says "ZigBee Bridge".	<p>Sonoff Zigbee Bridge Pro Hub [pdf] User Manual Zigbee Bridge Pro Hub, Bridge Pro Hub, Pro Hub, Hub</p>
---	---