



SonOFF ZigBee Bridge User Manual

[Home](#) » [SonOFF](#) » SonOFF ZigBee Bridge User Manual 

Contents

- [1 SonOFF ZigBee Bridge](#)
- [2 Operating Instruction](#)
- [3 Specifications](#)
- [4 Product Introduction](#)
- [5 Features](#)
- [6 Common Problems](#)
- [7 Documents / Resources](#)
- [8 Related Posts](#)

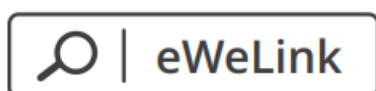


SonOFF ZigBee Bridge



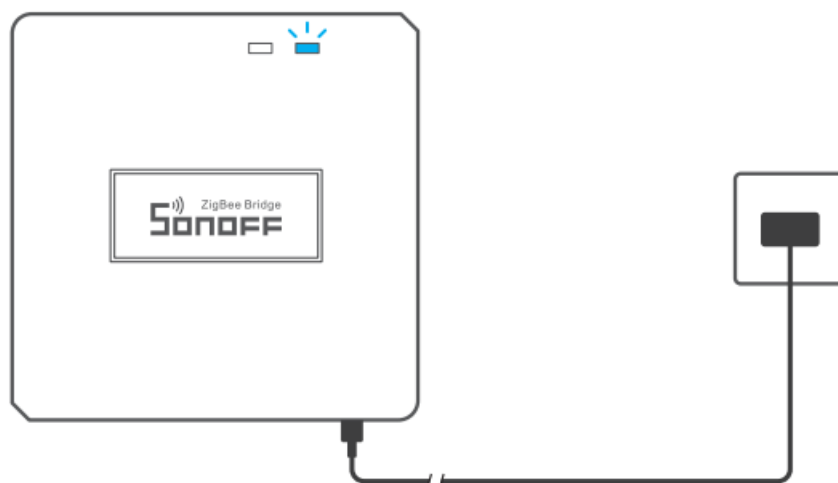
Operating Instruction

- Download the “eWeLink”APP



Android™ & iOS

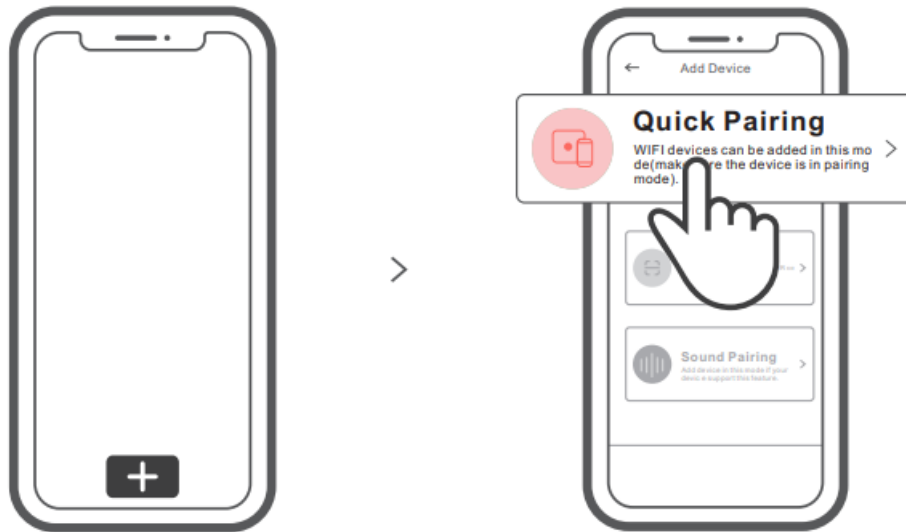
- Power on



- After powering on, the device will enter the quick pairing mode (Touch) during the first use. The Wi-Fi

LED indicator changes in a cycle of two short and one long flash. The device will exit the quick pairing mode (Touch) if not paired within 3mins. If you want to enter this mode, please long press the pairing button for about 5s until the Wi-Fi LED indicator changes in a cycle of two short and one long flash and release.

- Add ZigBee Bridge

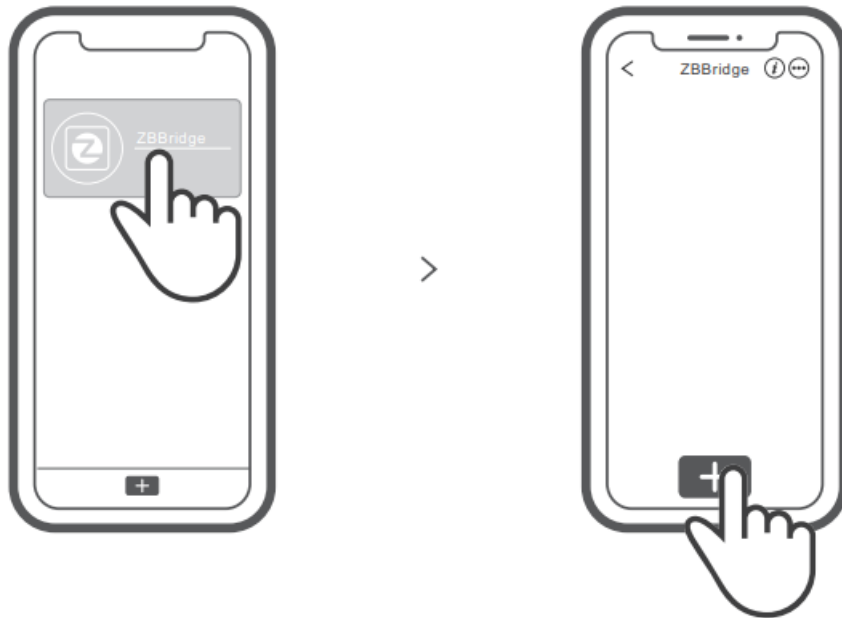


Compatible Pairing Mode

- If you fail to enter Quick Pairing Mode (Touch), please try “Compatible Pairing Mode ” to pair.
Long press Pairing button for 5s until the Wi-Fi LED indicator changes in a cycle of two short flashes and one long flash and release. Long press Pairing button for 5s again until the Wi-Fi LED indicator flashes quickly.
Then,
- the device enters Compatible Pairing Mode.
- Tap “+” and select “Compatible Pairing Mode ” on APP. Select Wi-Fi SSID with ITEAD-***** and enter the password 12345678, and then go back to eWeLink APP and tap “Next”. Be patient until pairing completes

Add a ZigBee sub-device to ZigBee Bridge

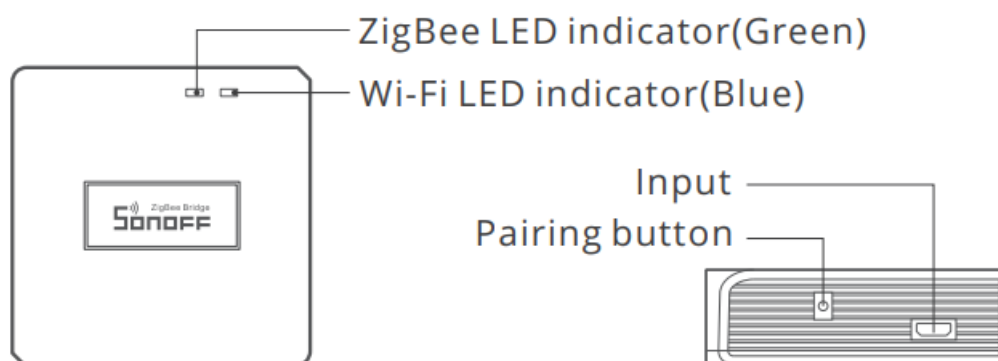
Set the ZigBee sub-device to the pairing mode and tap “+” on ZigBee Bridge to pair. ZigBee Bridge can add up to 32 sub-devices now. It will support adding more sub-devices soon.



Specifications

Model	ZBBridge
Input	5V 1A
ZigBee	ZigBee 3.0
Wi-Fi	IEEE 802.11 b/g/n 2.4GHz
Operating systems	Android & iOS
Working temperature	-10°C~40°C
Material	PC
Dimension	62x62x20mm

Product Introduction



LED indicator status instruction

LED indicator status	Status instruction
Blue LED flashes (one long and two short)	Quick Pairing Mode
Blue LED flashes quickly	Compatible Pairing Mode (AP)
Blue LED keeps on	Device is connected successfully
Blue LED flashes quickly once	Unable to discover the router
Blue LED flashes quickly twice	Connect to the router but fail to connect to Wi-Fi
Blue LED flashes quickly three times	Upgrading
Green LED flashes slowly	Searching and adding ...

Features

This is a ZigBee Bridge that allows you to control a variety of ZigBee devices by transforming Wi-Fi into ZigBee. You can remotely turn on/off or schedule on/off connected ZigBee devices, or share it with your family to control them together

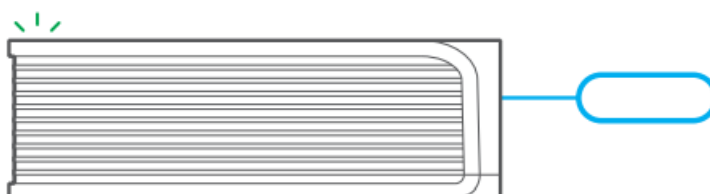
Currently supported ZigBee sub-devices

Brands	SONOFF	eWeLink
Model	BASICZBR3 ZBMINI S31 Lite zb SNZB-01 SNZB-02 SNZB-03 SNZB-04 S26R2ZB (TPE/TPG/TPF)	SA-003-UK SA-003-US

The number of supported ZigBee sub-devices will continue to be increased. The device also supports other ZigBee standard protocol products types, such as wireless door/window sensors, motion sensor, one-gang smart switch, water sensors, and temperature & humidity sensor.

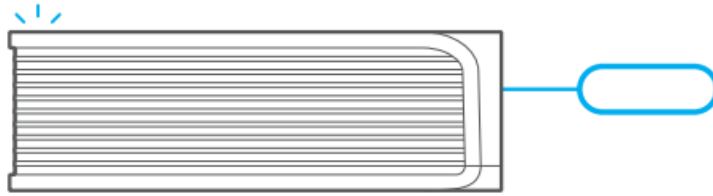
Delete ZigBee sub-devices

Long press the pairing button for 10s until ZigBee LED signal indicator “flashes twice”, then all paired sub-devices have been deleted.



Factory Reset

Long press the pairing button for about 5s until the Wi-Fi LED indicator changes in a cycle of two short and one long flash and release, then the reset is successful. The device enters quick pairing mode (Touch).




Common Problems

Q: Why my device stays “Offline”?

A: The newly added device needs 1 – 2mins to connect Wi-Fi and network. If it stays offline for a long time, please judge these problems by the blue Wi-Fi indicator status:

- The blue Wi-Fi indicator quickly flashes once per second, which means that the switch failed to connect your Wi-Fi:
- Maybe you have entered a wrong Wi-Fi password.
- Maybe there's too much distance between the switch your router or the environment causes interference, consider getting close to the router. If failed, please add it again.
- The 5G Wi-Fi network is not supported and only supports the 2.4GHz wireless network.
- Maybe the MAC address filtering is open. Please turn it off. If none of the above methods solved the problem, you can open the mobile datanetwork on your phone to create a Wi-Fi hotspot, then add the device again.
- Blue indicator quickly flashes twice per second, which means your device has connected to Wi-Fi but failed to connect to the server. Ensure steady enough network. If double flash occurs frequently, which means you access an unsteady network, not a product problem. If thenetwork is normal, try to turn off the power to restart the switch

Documents / Resources

 <p>Sonoff ZBBridge User manual V1.1</p> <p>ZigBee Bridge</p>	<p>SonOFF ZigBee Bridge [pdf] User Manual ZigBee Bridge</p>
----------------------------------------------------------------------------------------------------------------------------------------------------------	---------------------------------------------------------------------------------