



## SONOFF ZBMINIR2 Zigbee Smart Switch User Guide

[Home](#) » [SonOFF](#) » SONOFF ZBMINIR2 Zigbee Smart Switch User Guide 

### SONOFF ZBMINIR2 Zigbee Smart Switch User Guide

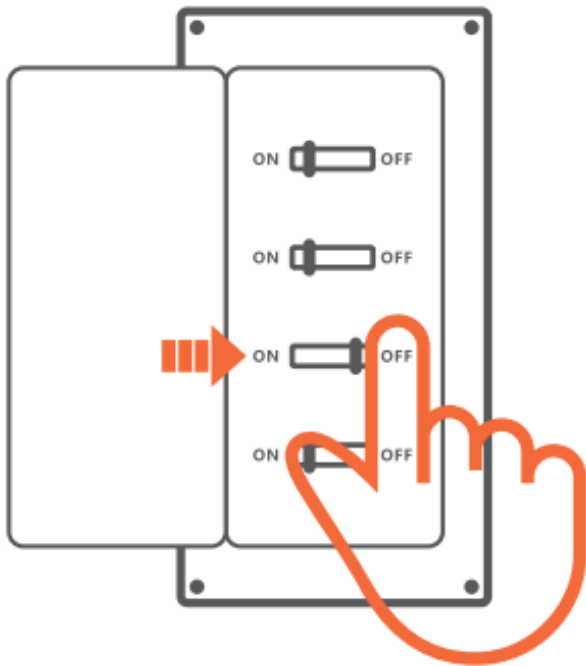


## Contents

- [1 Instruction Using](#)
- [2 Wiring instruction](#)
- [3 Download the eWeLink App & Add SONOFF Zigbee gateway](#)
- [4 Scan QR Code to Add Device](#)
- [5 Installation](#)
- [6 User Manual](#)
- [7 FCC compliance statement](#)
- [8 ISED Notice](#)
- [9 EU Declaration of Conformity](#)
- [10 For CE frequency](#)
- [11 WEEE Disposal and Recycling Information](#)
- [12 Documents / Resources](#)
  - [12.1 References](#)
- [13 Related Posts](#)

## Instruction Using

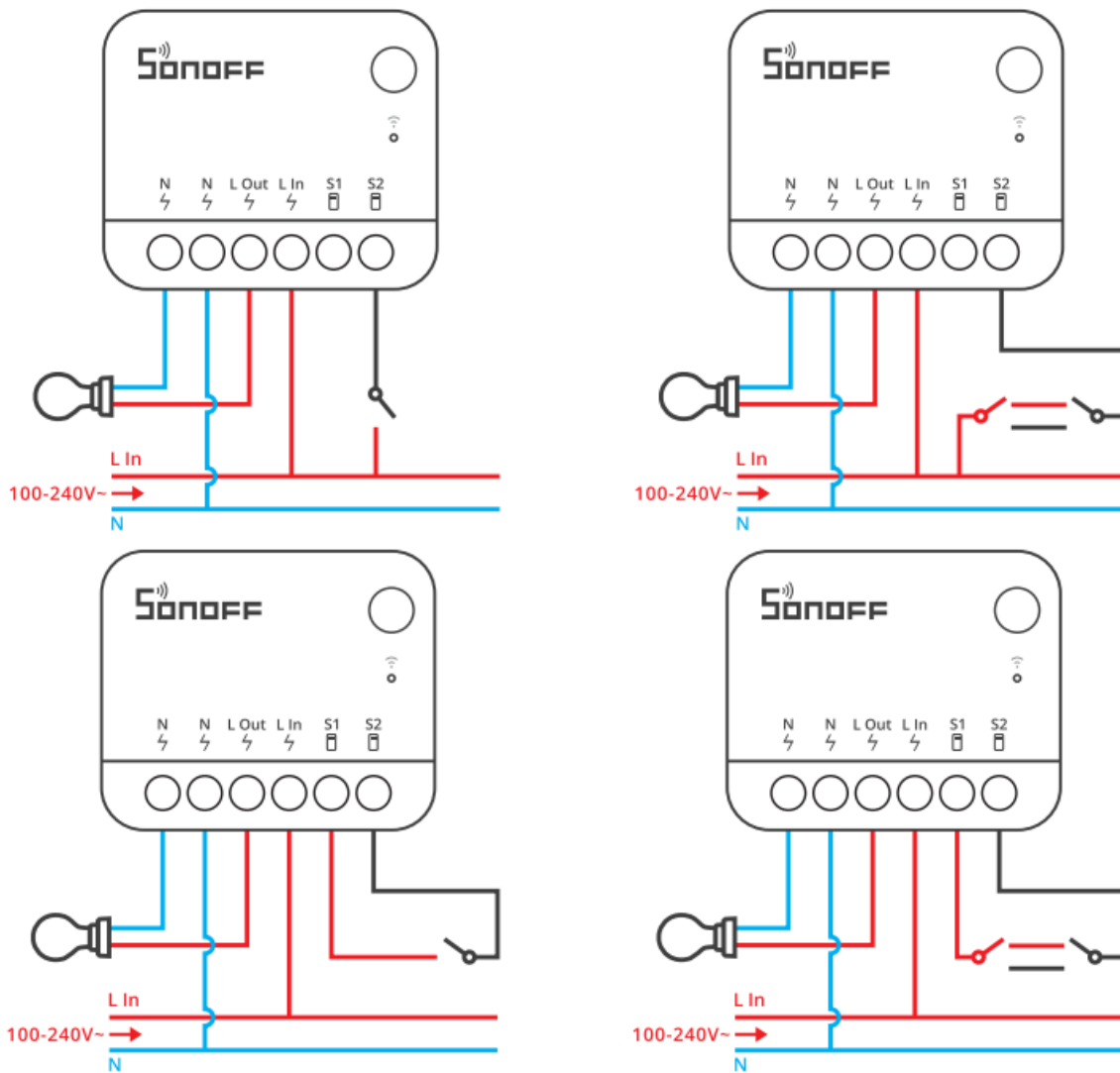
### Power off



Please install and maintain the device by a professional electrician.

To avoid electric shock hazard, do not operate any connection or contact the terminal connector while the device is powered on!

## Wiring instruction



1. It is prohibited to connect S1 and S2 terminals to the neutral or ground wire, in order to avoid damaging the equipment and causing danger.
2. Make sure all wires are connected correctly.
3. Supported switches are rocker switch and push button and factory default by supporting rocker switch.  
Method of change the switch type: short press the button 3 times until the green indicator flashes 3 times quickly, now you change the switch type successfully.

## Download the eWeLink App & Add SONOFF Zigbee gateway

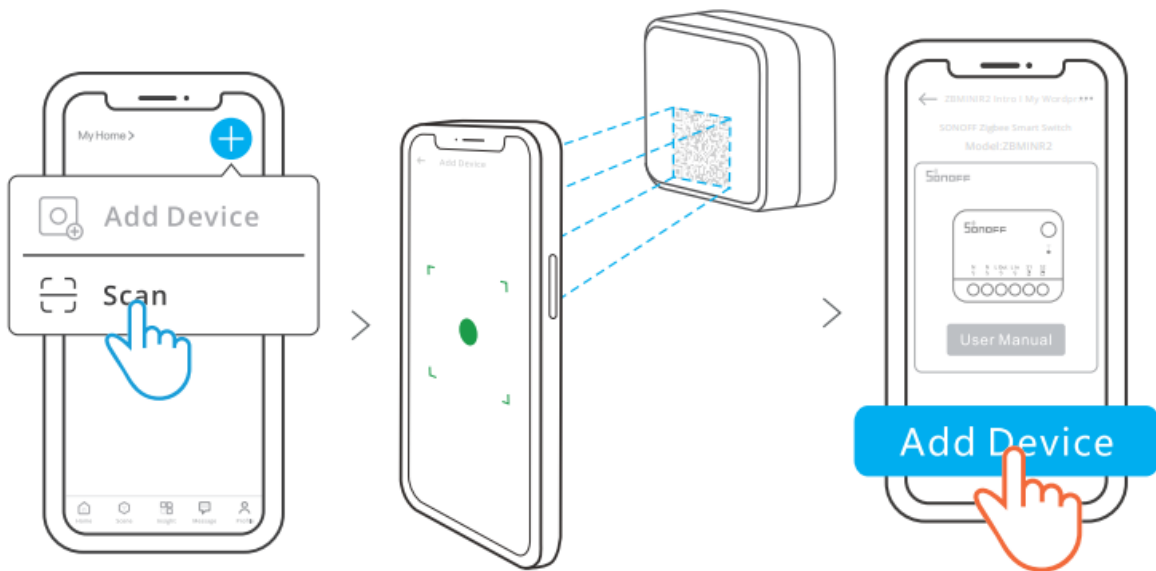
### Power on

After powering on, the device will enter the pairing mode defaulted during the first use and the LED signal indicator will “flash slowly”.



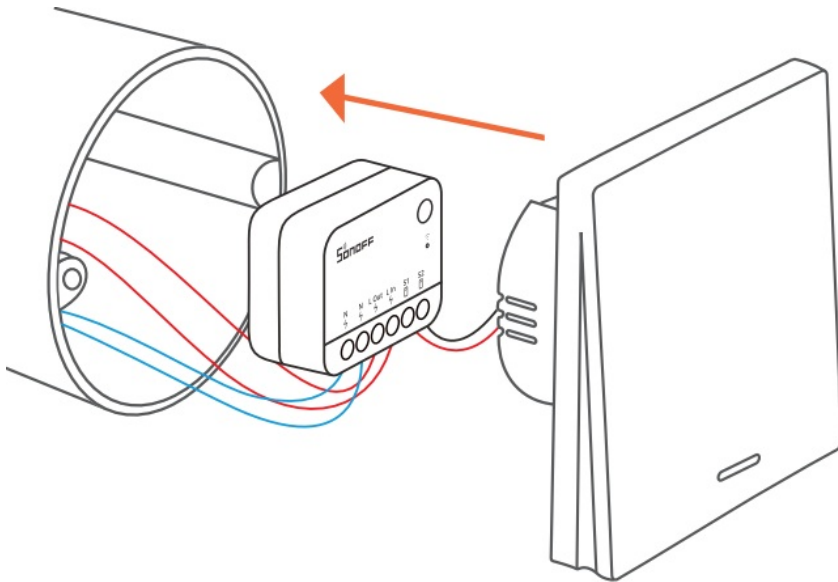
The device will exit the pairing mode if you do not operate it within 3 minutes. When you want to enter the pairing mode again, long press the button on the device for 5 seconds until the signal light “flashes slowly” and release.

## Scan QR Code to Add Device



Open the eWeLink App and scan the QR code on the device, then follow the instructions given by the app to proceed.

## Installation



## User Manual

<https://sonoff.tech/usermanuals/>

Enter the website provided above to view the User Manual for the device.

## FCC compliance statement

1. This device complies with part 15 of the FCC Rules. Operation is subject to the following two conditions:
  1. This device may not cause harmful interference, and
  2. This device must accept any interference received, including interference that may cause undesired operation.
2. Changes or modifications not expressly approved by the party responsible for compliance could void the user's authority to operate the equipment.

**Note:** This equipment has been tested and found to comply with the limits for a Class B digital device, pursuant to part 15 of the FCC Rules. These limits are designed to provide reasonable protection against harmful interference in a residential installation. This equipment generates, uses and can radiate radio frequency energy and, if not installed and used in accordance with the instructions, may cause harmful interference to radio communications. However, there is no guarantee that interference will not occur in a particular installation. If this equipment does cause harmful interference to radio or television reception, which can be determined by turning the equipment off and on, the user is encouraged to try to correct the interference by one or more of the following measures:

- Reorient or relocate the receiving antenna.
- Increase the separation between the equipment and receiver.
- Connect the equipment into an outlet on a circuit different from that to which the receiver is connected.
- Consult the dealer or an experienced radio/TV technician for help.

#### **FCC Radiation Exposure statement:**

The device has been evaluated to meet general RF exposure requirement, This equipment should be installed and operated with a minimum distance of 20 cm between the radiator and your body.

#### **ISED Notice**

This device contains licence-exempt transmitter(s)/receiver(s) that comply with Innovation, Science and Economic Development Canada's licence-exempt RSS(s). Operation is subject to the following two conditions:

1. This device may not cause interference.
2. This device must accept any interference, including interference that may cause undesired operation of the device.

This Class B digital apparatus complies with Canadian ICES-003(B).

This device complies with RSS-247 of Industry Canada. Operation is subject to the condition that this device does not cause harmful interference.

#### **ISED Radiation Exposure Statement**

This equipment should be installed and operated with a minimum distance of 20 cm between the radiator and your body.

#### **EU Declaration of Conformity**

Hereby, Shenzhen Sonoff Technologies Co., Ltd. declares that the radio equipment type ZBMINIR2 is in compliance with Directive 2014/53/EU. The full text of the EU declaration of conformity is available at the following internet address: <https://sonoff.tech/-compliance/>

#### **For CE frequency**

EU Operating Frequency Range

**Zigbee:** 2405-2480MHz

EU Output Power

Zigbee≤10dBm

#### **WEEE Disposal and Recycling Information**



■ All products bearing this symbol are waste electrical and electronic equipment (WEEE as in directive 2012/19/EU) which should not be mixed with unsorted household waste. Instead, you should protect human health and the environment by handing over your waste equipment to a designated collection point for the recycling of waste electrical and electronic equipment, appointed by the government or local authorities. Correct disposal and recycling will help prevent potential negative consequences to the environment and human health. Please contact the installer or local authorities for more information about the location as well as terms and conditions of such collection points.

To ensure the safety of your electrical installation, it's essential either a Miniature Circuit Breaker (MCB) or a Residual Current operated Circuit-breaker with Integral Overcurrent (RCBO) with an electrical rating of 10A has been installed before the ZBMINIR2.

The equipment is only suitable for mounting at heights  $\leq 2$  m



This product is only suitable for safe use at altitudes below 2000m.



**Shenzhen Sonoff Technologies Co., Ltd.**

3F & 6F, Bldg A, No. 663, Bulong Rd, Shenzhen, Guangdong, China

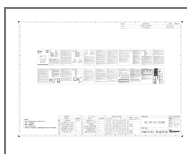
**ZIP code:** 518000 **Website:** [sonoff.tech](http://sonoff.tech) **Service**

**email:** [support@itead.cc](mailto:support@itead.cc)

**MADE IN CHINA**



## Documents / Resources



**[SONOFF ZBMINIR2 Zigbee Smart Switch](#) [pdf] User Guide**

2APN5-ZBMINIR2, 2APN5ZBMINIR2, ZBMINIR2 Zigbee Smart Switch, ZBMINIR2, ZBMINIR2 Smart Switch, Zigbee Smart Switch, Smart Switch, Zigbee Switch, Switch

## References

- [User Manual](#)

## **Manuals+. Privacy Policy**

This website is an independent publication and is neither affiliated with nor endorsed by any of the trademark owners. The "Bluetooth®" word mark and logos are registered trademarks owned by Bluetooth SIG, Inc. The "Wi-Fi®" word mark and logos are registered trademarks owned by the Wi-Fi Alliance. Any use of these marks on this website does not imply any affiliation with or endorsement.