



SONOFF ZBMINIL2 Zigbee Smart Light Switch User Manual

[Home](#) » [SonOFF](#) » SONOFF ZBMINIL2 Zigbee Smart Light Switch User Manual 

Contents

- 1 SONOFF ZBMINIL2 Zigbee Smart Light Switch
- 2 Product Information
- 3 Product Usage Instruction
- 4 Product introduction
- 5 LED indicator status instruction
- 6 Features
- 7 Installation
 - 7.1 Wiring instruction
- 8 Pair with eWeLink App
- 9 Pair with Amazon Echo
- 10 Switch the device to the corresponding switch
- 11 Install the ZBMINI Extreme in the mounting box
- 12 Specifications
- 13 Factory reset
- 14 Supported voice assistant
- 15 FCC Warning
- 16 Documents / Resources
 - 16.1 References
- 17 Related Posts



SONOFF ZBMINIL2 Zigbee Smart Light Switch



Product Information

Specifications:

- **Product Name:** ZBMINI Extreme
- **User manual:** V1.0
- **Product Type:** Zigbee Smart Switch
- **Supported Voltage:** 100-240V AC
- **Switch Rating:** 10A/250V
- **Dimensions:** 39.5x32x18.4mm
- **Weight:** Less than 1kg
- **Supported Hub:** Zigbee Hub
- **Compatibility:** SONOFF Zigbee/Zigbee 3.0

Product Introduction:

The ZBMINI Extreme is a SONOFF Zigbee smart switch that allows remote control, scheduling, and smart scene triggering of other devices. It does not require a neutral wire for installation.

LED Indicator Status Instruction:

- **Green LED indicator slow flashes:** Relay is powered on
- **Green LED indicator keeps on:** Relay is powered on
- **Green LED indicator quick flashes:** Relay is powered on
- **Green LED indicator slow flashes:** Relay is powered on

Features:

- Remote Control
- Single/Countdown Timing
- Voice Control
- OTA Upgrade
- Smart Scene
- External Switch
- Power on State
- Camera Linking

Product Usage Instruction

Installation:

1. Power off the device before installation.
2. Install an air switch as the protective device (Air switch: 10A/250V).
3. Ensure proper wiring and powering of the L in the terminal to prevent abnormal device operation.
4. Supported switches are rocker switches and push buttons. Do not use with other inductive loads such as fans.

Pair with eWeLink App:

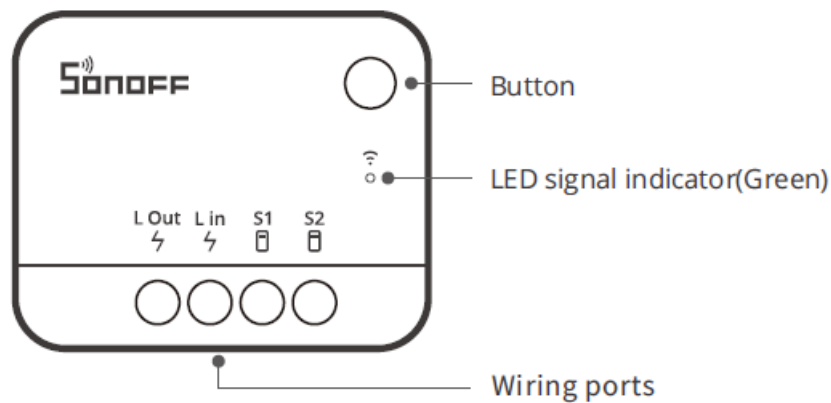
1. Download the eWeLink App.
2. Pair SONOFF Zigbee Bridge to your eWeLink account.
3. Power on the device.

After powering on, the device will enter the pairing mode by default during the first use, and the green LED indicator will flash slowly. The device will exit the pairing mode if not operated within 3 minutes. To re-enter the pairing mode, press and hold the button of the device for 5 seconds until the green LED indicator flashes slowly and then release. Note that the device will remain off and cannot be controlled by the device's button or external switch while in pairing mode.

FAQ:

- **Q: What type of switches are supported?**
A: The supported switches are the rocker switch and push button.
- **Q: Can I use it with other inductive loads such as a fan?**
A: No, it is unsupported to use with other inductive loads such as a fan.
- **Q: How long does it take for the device to exit pairing mode?**
A: The device will exit the pairing mode if not operated within 3 minutes.

Product introduction



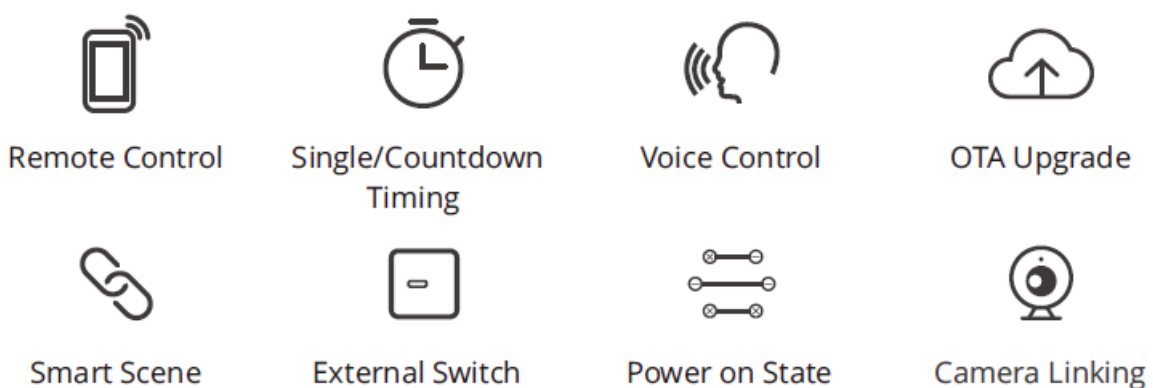
The device's weight is less than 1kg, and the recommended installation height is less than 2m.

LED indicator status instruction

LED indicator status	Status instruction
Green LED indicator slow flashes	Pairing mode
The green LED indicator keeps on (Relay is powered on)	Device is online
Green LED indicator quick flashes (Relay is powered on)	Abnormal network connection ZBMINI Extreme and router connect normally, but the router and the hub are disconnected
Green LED indicator slow flashes (Relay is powered on)	Abnormal network connection Slow flashing under non-pairing state: ZBMINI Extreme and the parent device are disconnected

Features

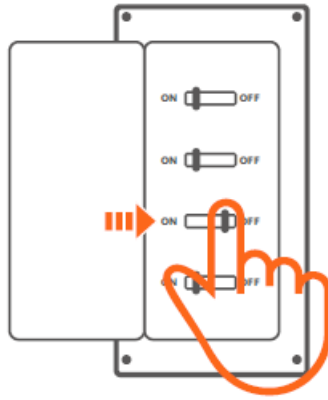
SONOFF Zigbee smart switch (No neutral required) allows you to remote control, schedule on/off, and set smart scenes to trigger other devices, etc. by connecting the Zigbee hub.



The above functions are determined by the connected Zigbee Hub.

Installation

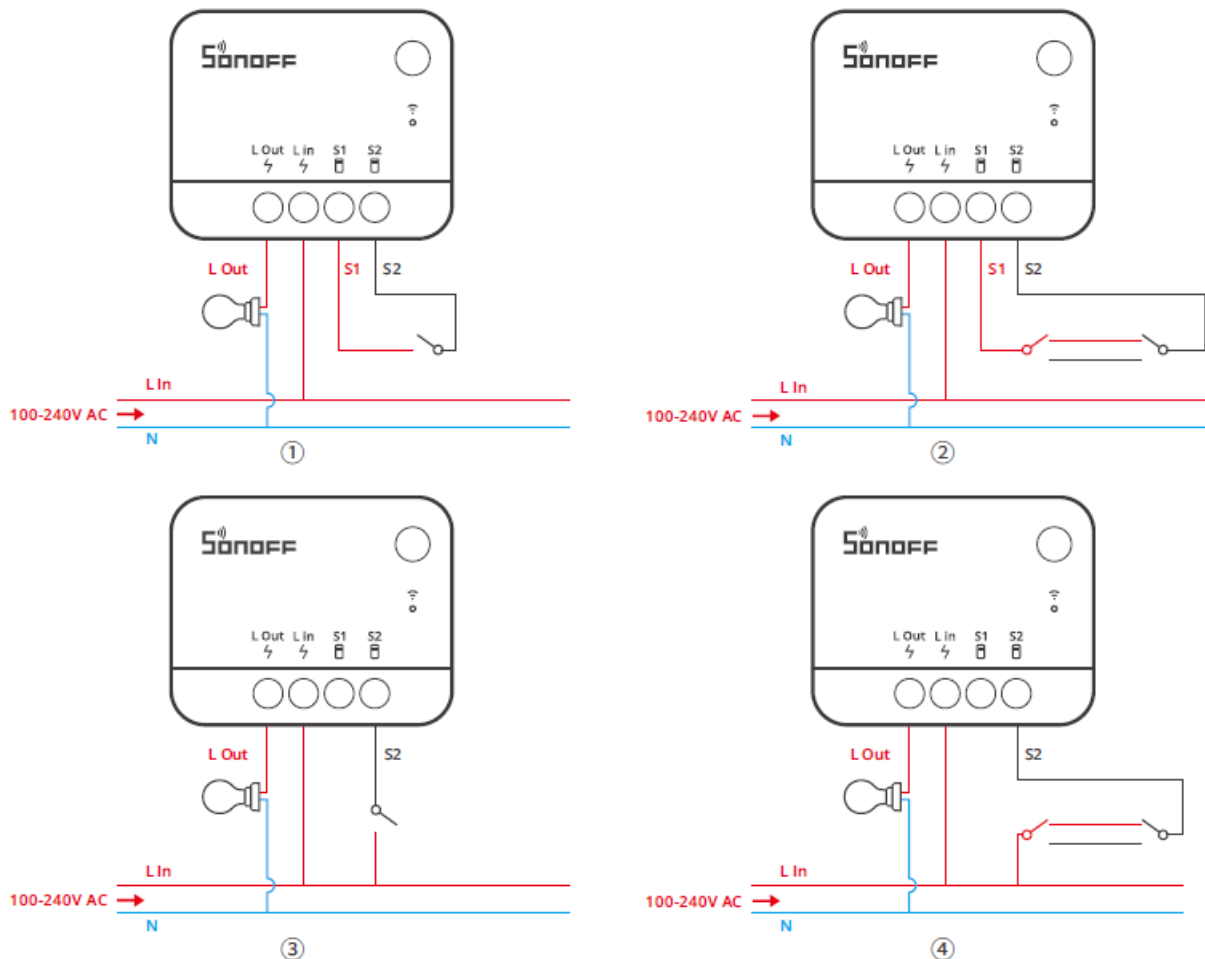
Power off



Please install and maintain the device by a professional electrician. To avoid electric shock hazards, do not operate any connection or contact the terminal connector while the device is powered on!

Wiring instruction

Before installing the device, please install an air switch as the protective device (Air switch: 10A/250V).



For the above ③④ wiring methods, please ensure the proper wiring and powering of the L in the terminal, otherwise, it will cause the device to work abnormally.

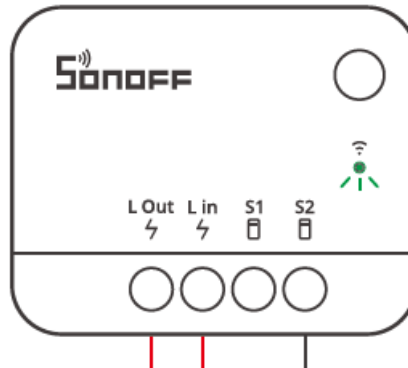
- Supported switches are rocker switch and push button and factory default by supporting rocker switch.
- Unsupported to use with other Inductive loads such as fan.
- Make sure all wires are connected correctly.

Pair with eWeLink App

1. Download the eWeLink App



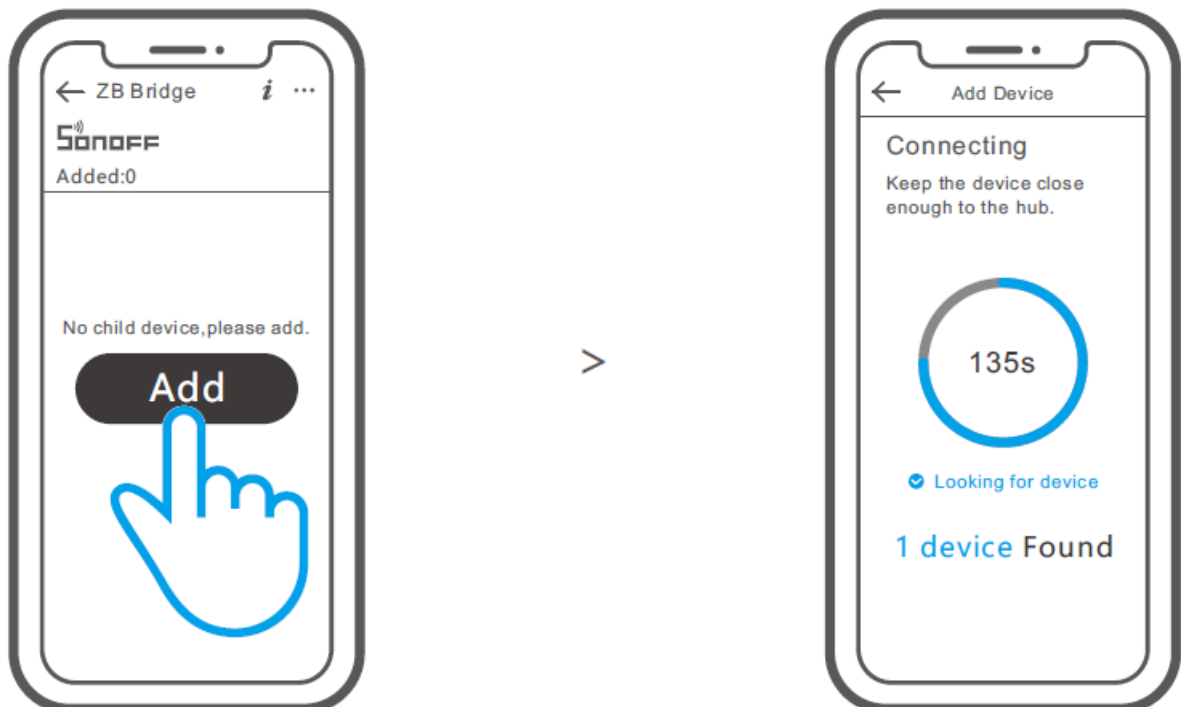
2. Pair SONOFF Zigbee Bridge to your eWeLink account
3. Power on



After powering on, the device will enter the pairing mode defaulted during the first use and the green LED indicator will "flash slowly".

- The device will exit the pairing mode if you do not operate it within 3 minutes. If you want to enter the pairing mode again, press and hold the button of the device for 5 seconds until the green Led indicator "flashes slowly" and releases.
- The device will remain off and cannot be controlled by the device's button or external switch when it is in pairing mode.

4. Add ZBMINI Extreme to the ZB Bridge

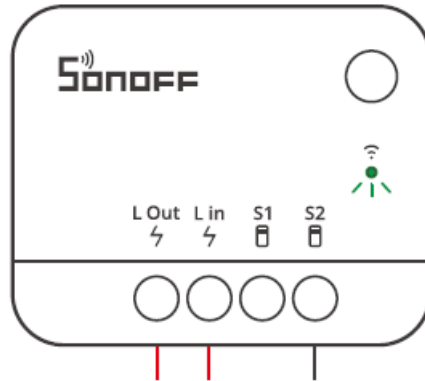


Open the eWeLink App, tap the "Add" icon on the ZB Bridge interface, and then wait to look for and add the sub-

devices.

Pair with Amazon Echo

1. Download the latest Amazon Alexa App and pair it with Amazon Echo with a built-in Zigbee hub.
2. Power on ZBMINI Extreme, then it defaulted to enter the pairing mode, and the green LED indicator “flashes slowly”.



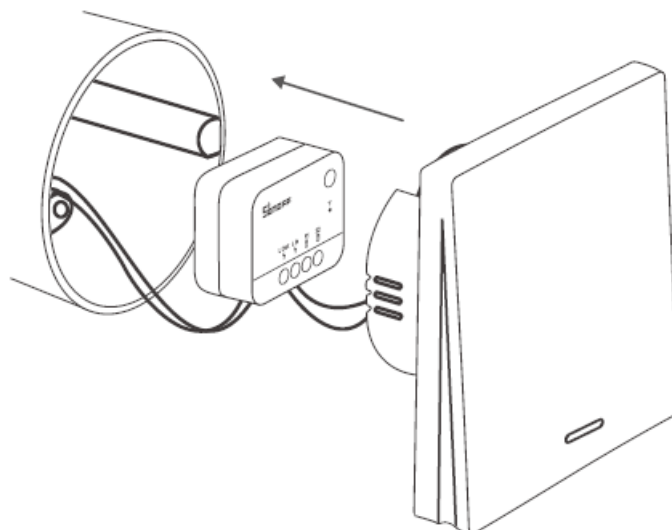
- The device will remain off and cannot be controlled by the device's button or external switch when it is in pairing mode.
3. Ask the Alexa Echo to discover the devices automatically by saying “Alexa, discover my devices”.
- If it fails to pair within 3 minutes, ZBMINI Extreme will exit the pairing mode. Long press the button on ZBMINI Extreme for 5s to make it enter the pairing mode if you need to pair again.

Switch the device to the corresponding switch

The device supports a rocker switch by default. If you want to change the switch type, press the button 3 times and see the green LED indicator flash 3 times quickly, then the switch type is switched successfully.

- Please switch to the corresponding switch type before installing the device in the mounting box.

Install the ZBMINI Extreme in the mounting box



Specifications

Model	ZBMINIL2
Input	100-240V AC 50/60Hz 6A Max
Output	100-240V AC 50/60Hz 6A Max
Max. load	Resistive load: 6A Max LED: 150W Max @100V, 300W Max @240V
Wireless connection	Zigbee 3.0
Working temperature	-10~40°C
Casing material	PC V0
Product Size	39.5x32x18.4mm

Factory reset

Return the device to its factory settings in any following ways (The device will enter the pairing mode automatically after resetting)

1. Press 10 consecutive times the connected external switch
2. Long-press the device for 5s.
3. Delete the sub-device on eWeLink App

Supported voice assistant



FCC Warning

Changes or modifications not expressly approved by the party responsible for compliance could avoid the user's authority to operate the equipment. This device complies with part 15 of the FCC Rules. Operation is subject to the following two conditions: (1) This device may not cause harmful interference, and (2) this device must accept any interference received, including interference that may cause undesired operation.

FCC Radiation Exposure Statement:

This equipment complies with FCC radiation exposure limits set forth for an uncontrolled environment. This equipment should be installed and operated with minimum distance 20 cm between the radiator & your body. This transmitter must not be co-located or operating in conjunction with any other antenna or transmitter.

Note:

This equipment has been tested and found to comply with the limits for a Class B digital device, pursuant to part 15 of the FCC Rules. These limits are designed to provide reasonable protection against harmful interference in a residential installation. This equipment generates, uses, and can radiate radio frequency energy and, if not installed and used in accordance with the instructions, may cause harmful interference to radio communications. However, there is no guarantee that interference will not occur in a particular installation. If this equipment does cause harmful interference to radio or television reception, which can be determined by turning the equipment off and on, the user is encouraged to try to correct the interference by one or more of the following measures:

- Reorient or relocate the receiving antenna.
- Increase the separation between the equipment and the receiver.
- Connect the equipment to an outlet on a circuit different from that to which the receiver is connected.
- Consult the dealer or an experienced radio/TV technician for help.

IC Warning

This device complies with the Innovation, Science and Economic Development Canada license-exempt RSS standard (s). Operation is subject to the following two conditions: (1) this device may not cause interference, and (2) this device must accept any interference, including interference that may cause undesired operation of the device.

ISED Radiation Exposure Statement:

- This equipment complies with ISED RF radiation exposure limits set forth for an uncontrolled environment.
- This transmitter must not be co-located or operating in conjunction with any other antenna or transmitter.

Herby, Shenzhen Sonoff Technologies Co., Ltd. declares that the radio equipment type ZBMINIL2 is in compliance with Directive 2014/53/EU. The full text of the EU Declaration of Conformity is available at the following internet address: <https://sonoff.tech/usermanuals>.

- **Operation frequency Range:** 2405-2480MHz(Zigbee)
- **RF Output Power:** 4.81dBm(Zigbee)

Shenzhen Sonoff Technologies Co., Ltd.

3F & 6F, Bldg A, No. 663, Bulong Rd, Shenzhen, Guangdong, China

- **ZIP code:** 518000
- **Website:** sonoff.tech.

MADE IN CHINA.



Documents / Resources

	<p>SONOFF ZBMINIL2 Zigbee Smart Light Switch [pdf] User Manual</p> <p>ZBMINIL2 Zigbee Smart Light Switch, ZBMINIL2, Zigbee Smart Light Switch, Smart Light Switch, Light Switch, Switch</p>
---	---

References

- [📖 User Manuals - SONOFF Official](#)
- [User Manual](#)

Manuals+.