



**Contents** [ [hide](#) ]

[1 SONOFF ZBM5-86W Zigbee Smart Wall Switch](#)

[2 Power off](#)

[3 Scan QR Code to Add Device](#)

[4 Installation](#)

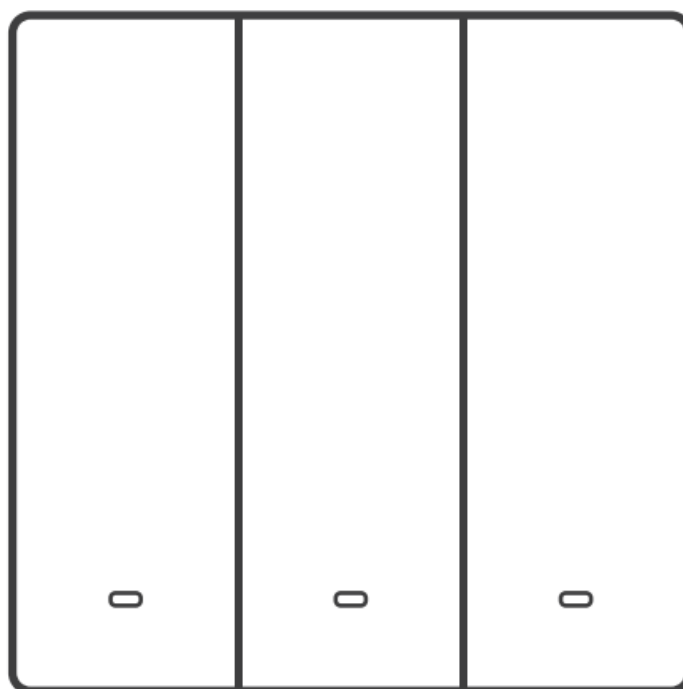
[5 WEEE Disposal and Recycling Information](#)

[6 Documents / Resources](#)

[6.1 References](#)

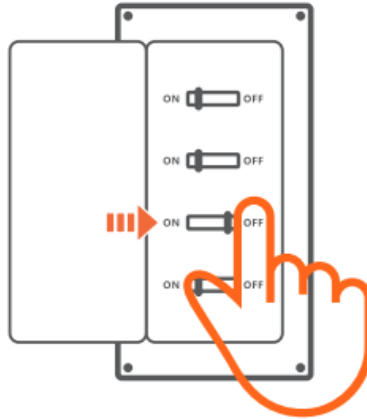


## SONOFF ZBM5-86W Zigbee Smart Wall Switch



## Power off

1



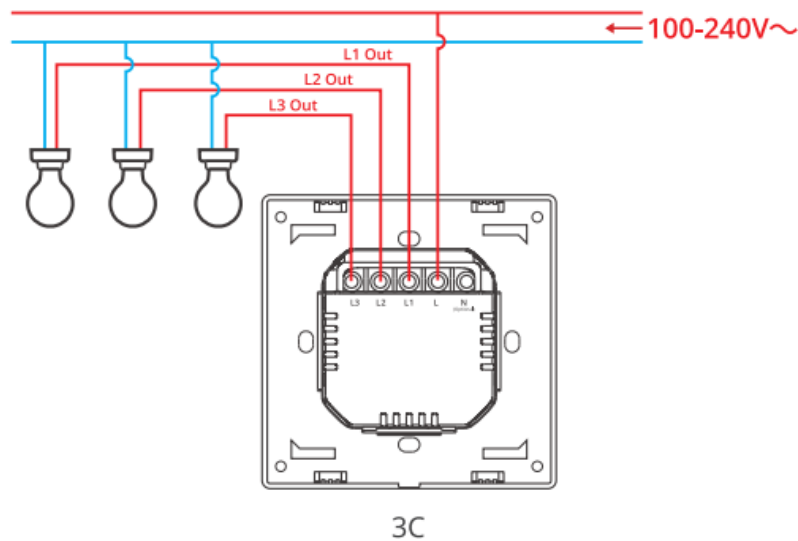
### WARNING

Please install and maintain the device by a professional electrician. To avoid electric shock hazard, do not operate any connection or contact the terminal connector while the device is powered on!

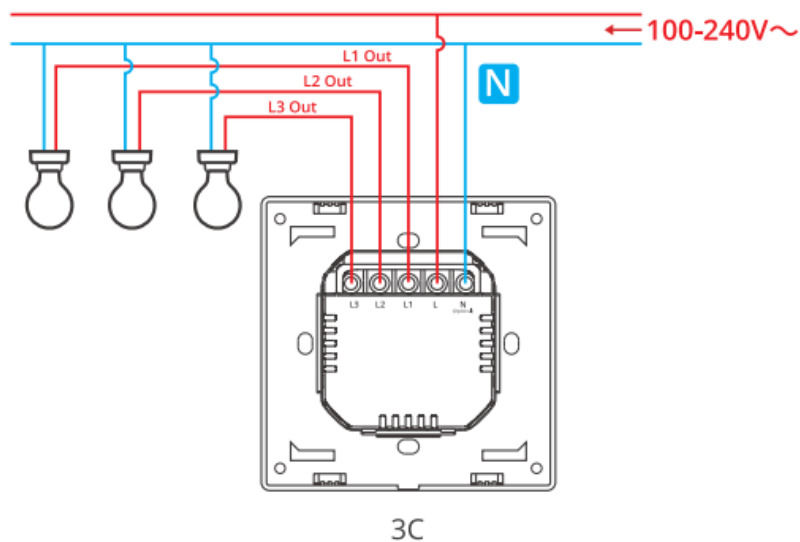
### Wiring instruction

1. Choose no neutral required mode or neutral required mode according to your home's wiring.
2. In no neutral required mode: the minimum supported load is 3W, and this device does not support other types of inductive loads such as fans.
3. Make sure all wires are connected correctly.

### No neutral required mode wiring

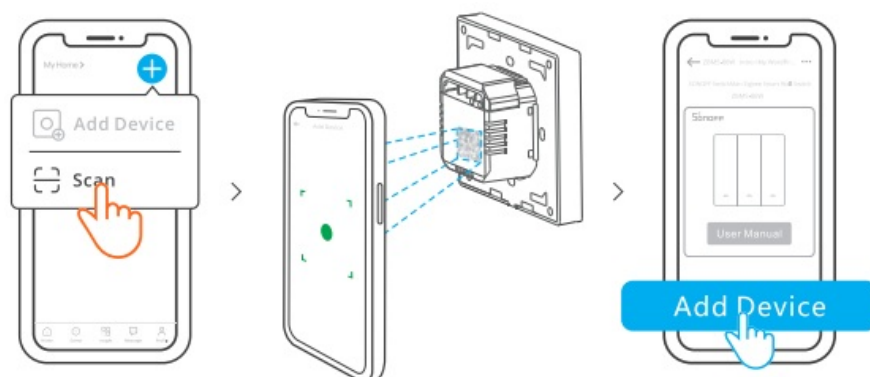


### Neutral required mode wiring



Download the eWeLink App & Add SONOFF Zigbee gateway.

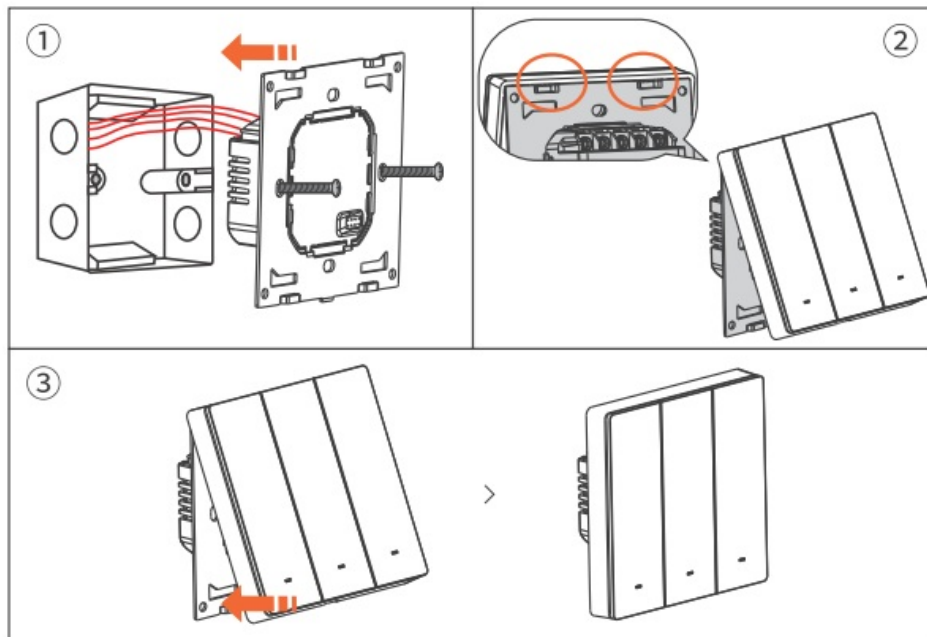
### Scan QR Code to Add Device



Open the eWeLink App and scan the QR code on the device, then follow the instructions

given by the app to proceed.

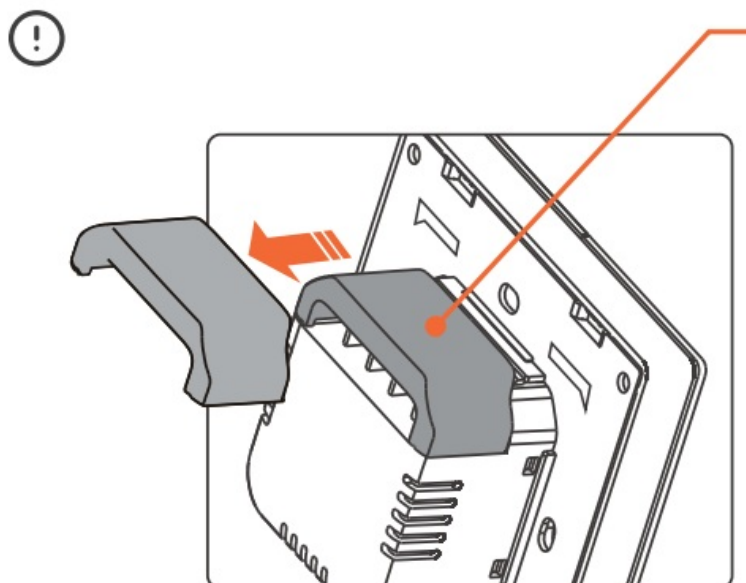
## Installation



1. Tighten the power module to the mounting box with screws.
2. Hook the switch module's latch into the upper groove of the metal frame.
3. Press downward to fix the switch module in place, it will automatically align with the pin positions.

The equipment is only suitable for mounting at heights 2 m

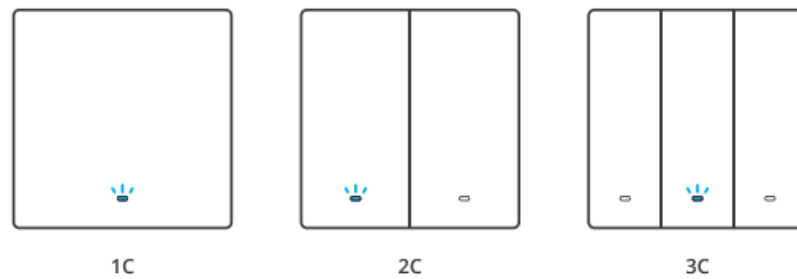
## Protective cover



When the wall-mounting box is made of plastic and the size is small, the protective

cover can be omitted.

## Power on



After powering on, the device will enter the pairing mode defaulted during the first use and the LED signal indicator will “flash slowly”.

The device will exit the Pairing Mode if not paired within 3mins. When you want to enter the pairing mode again, long press the button on the device for 5 seconds until the signal light “flashes slowly/” and release.

## User Manual

<https://sonoff.tech/usermanuals>

Enter the website provided above to view the User Manual for the device.

- It is suitable for safe use only when the altitude is below 2000m.
- Security risks may arise when the altitude is above 2000m.
- To ensure the safety of your electrical installation, it's essential either a Miniature Circuit Breaker (MCB) or a Residual Current operated Circuit-breaker with Integral Overcurrent protection(RCBO) with an electrical rating of 1 OA has been installed before the ZBM5-1 c-86W, ZBM5-2C-86W, ZBM5-3C-86W .

## Warning

Under normal use of condition, this equipment should be kept a separation distance of at least 20 cm between the antenna and the body of the user.

## EU Declaration of Conformity

Hereby, Shenzhen Sonoff Technologies Co., Ltd. declares that the radioequipment type ZBM5-1 c-86W, ZBM5-2C-86W, ZBM5-3C-86W is in compliance with Directive 2014/53/EU. The full text of the EU declaration of conformity is available at the following

internet address: <https://sonoff.tech/compliance/>

## For CE frequency


- EU Operating Frequency Range
- Zigbee: 2405-2480 MHz
- EU Output Power
- ZigbeeQ0dBm

## WEEE Disposal and Recycling Information



■ All products bearing this symbol are waste electrical and electronic equipment (WEEE as in Directive 2012/19/EU) which should not be mixed with unsorted household waste. Instead, you should protect human health and the environment by handing over your waste equipment to a designated collection point for the recycling of waste electrical and electronic equipment, appointed by the government or local authorities. Correct disposal and recycling will help prevent potential negative consequences to the environment and human health. Please contact the installer or local authorities for more information about the location as well as terms and conditions of such collection points.

## ZBM5-1C-86W:


- Rating/ME3M: 100-240V- 50/60Hz IOA Max Resistive load -m-  μ
- LED: OOV
- Min.load: 3W (No Neutral Required)
- Net weight: 157.3g
- Product dimension: 87x87x40.2mm

## Shenzhen Sonoff Technologies Co., Ltd.

- 3F & 6F, BldgA, No. 663, Bulong Rd, Shenzhen, Guangdong, China
- Website: sonoff.tech
- ZIP code: 518000

- Service email: [support@itead.cc](mailto:support@itead.cc) MADE IN CHINA

# Documents / Resources

	<a href="#">SONOFF ZBM5-86W Zigbee Smart Wall Switch [pdf]</a> User Guide 86 Type, ZBM5-86W Zigbee Smart Wall Switch, ZBM5-86W, Zigbee Smart Wall Switch, Smart Wall Switch, Switch
---	--

## References

- [User Manual](#)

■ SonOFF  
◆ 86 Type, Smart Wall Switch, SonOFF, switch, ZBM5-86W, ZBM5-86W Zigbee Smart Wall Switch, Zigbee Smart Wall Switch

---

# Leave a comment

Your email address will not be published. Required fields are marked \*

Comment \*

Name

Email

Website

☐ Save my name, email, and website in this browser for the next time I comment.

**Post Comment**

**Search:**

e.g. whirlpool wrf535swhz

**Search**

[Manuals+](#) | [Upload](#) | [Deep Search](#) | [Privacy Policy](#) | [@manuals.plus](#) | [YouTube](#)

This website is an independent publication and is neither affiliated with nor endorsed by any of the trademark owners. The "Bluetooth®" word mark and logos are registered trademarks owned by Bluetooth SIG, Inc. The "Wi-Fi®" word mark and logos are registered trademarks owned by the Wi-Fi Alliance. Any use of these marks on this website does not imply any affiliation with or endorsement.