



SONOFF ZBBridge-U V1.0 Zigbee Bridge Ultra User Guide

[Home](#) » [SonOFF](#) » SONOFF ZBBridge-U V1.0 Zigbee Bridge Ultra User Guide 

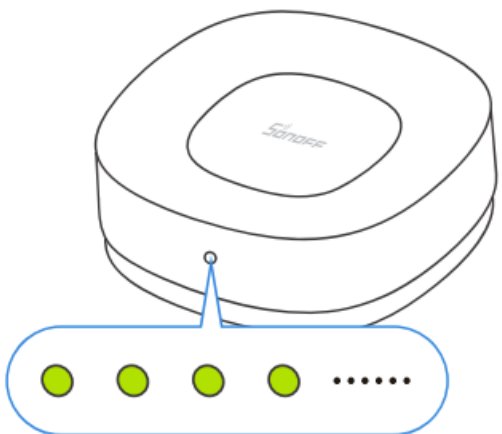
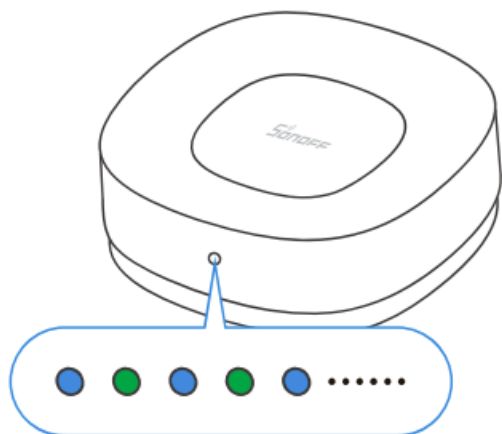
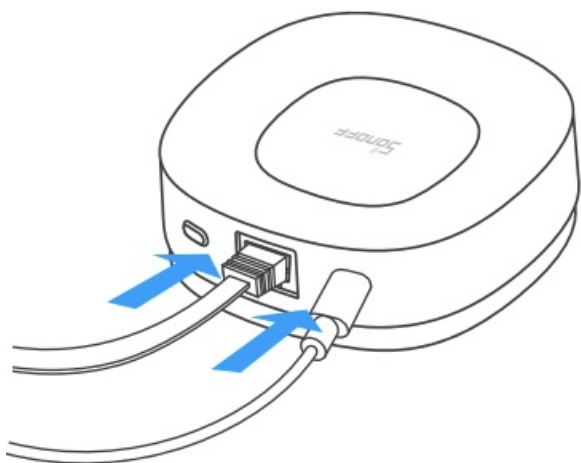
SONOFF ZBBridge-U V1.0 Zigbee Bridge Ultra User Guide



Contents

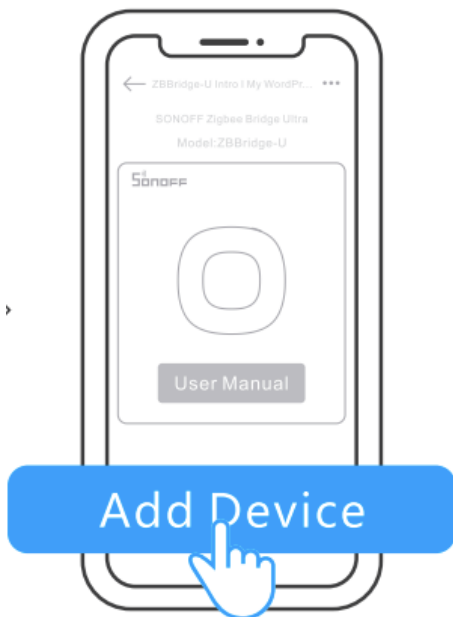
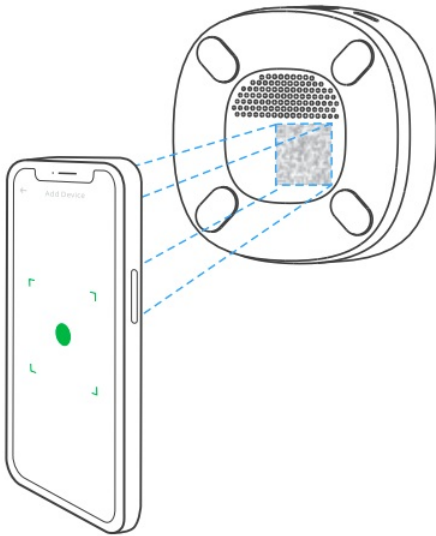
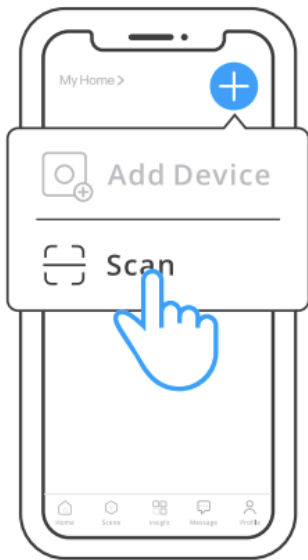
- [1 Power on Einschalten Allurer Accessioned](#)
- [2 Scan QR Code to Add Device](#)
- [3 Add Zigbee Sub-devices](#)
- [4 User Manual](#)
- [5 SAR Warning](#)
- [6 Download the eWeLink App](#)
- [7 WEEE Disposal and Recycling Information](#)
- [8 Shenzhen Soloff Technologies Co., Ltd.](#)
- [9 Documents / Resources](#)
 - [9.1 References](#)
- [10 Related Posts](#)

Power on Einschalten Allurer Accessioned



Insert the Type-C power cable, and the gateway LED indicator will flash in a “blue-green breathing” state, indicating that the gateway is starting. When you hear the gateway prompt sound, it signifies that the device has started. The gateway defaults to Pairing mode on the first use, with the LED indicator showing a “yellow slow flash” state.

Scan QR Code to Add Device



Open the ewe Link App and scan the QR code on the device, then follow the instructions given by the app to proceed.



Note: If the page doesn't display after scanning the code, please power on the device and then click the '+' button in the top right corner of the ewe Link App homepage. Select 'Add Device' to proceed.

Add Zigbee Sub-devices

First, put the Zigbee sub-device into Pairing mode, then click on "+ Add Device" on the gateway interface, and wait for the search to complete to add the sub-device

User Manual

<https://sonoff.tech/usermanuals>

Enter the website provided above to view the User Manual for the device.

FCC compliance statement

1. This device complies with part 15 of the FCC Rules. Operation is subject to the following two conditions:
(1) This device may not cause harmful interference, and (2) This device must accept any interference received, including interference that may cause undesired operation.
2. Changes or modifications not expressly approved by the party responsible for compliance could void the user's authority to operate the equipment.

Note: This equipment has been tested and found to comply with the limits for a Class B digital device, pursuant to part 15 of the FCC Rules. These limits are designed to provide reasonable protection against harmful interference in a residential installation. This equipment generates, uses and can radiate radio frequency energy and, if not installed and used in accordance with the instructions, may cause harmful interference to radio communications. However, there is no guarantee that interference will not occur in a particular installation. If this equipment does cause harmful interference to radio or television reception, which can be determined by turning the equipment off and on, the user is encouraged to try to correct the interference by one or more of the following measures:

- Reorient or relocate the receiving antenna.
- Increase the separation between the equipment and receiver.
- Connect the equipment into an outlet on a circuit different from that to which the receiver is connected.
- Consult the dealer or an experienced radio/TV technician for help.

FCC Radiation Exposure statement:

This equipment complies with FCC radiation exposure limits set forth for an uncontrolled environment.

This equipment should be installed and operated with minimum distance of 20 cm between the radiator and your body.

This transmitter must not be co-located or operating in conjunction with any other antenna or transmitter.

For CE frequency EU Operating Frequency Range

Wi-Fi: 802.11 b/g/n20 2412-2472 MHz, 802.11 n40: 2422-2462 MHz

BLE: 2402-2480 MHz

Zigbee: 2405-2480 MHz 12

EU Output Power Wi-Fi 2.4G<20dBm BLE≤10dBm Zigbee≤10dBm

ISED Notice

This device contains licence-exempt transmitter(s)/receiver(s) that comply with Innovation, Science and Economic Development Canada's licence-exempt RSS(s). Operation is subject to the following two conditions: (1) This device may not cause interference.

(2) This device must accept any interference, including interference that may cause undesired operation of the

device.

This Class B digital apparatus complies with Canadian ICES-003(B).

This device complies with RSS-247 of Industry Canada. Operation is subject to the condition that this device does not cause harmful interference.

SAR Warning

Under normal use of condition, this equipment should be kept a separation distance of at least 20 cm between the antenna and the body of the user.

EU Declaration of Conformity

Hereby, Shenzhen Sonoff Technologies Co., Ltd declares that the radio equipment type ZBBridge-U is in compliance with Directive 2014/53/EU. The full text of the EU declaration of conformity is available at the following internet address: <https://sonoff.tech/compliance/>

Download the eWeLink App



WEEE Disposal and Recycling Information



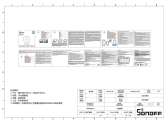
■ All products bearing this symbol are waste electrical and electronic equipment (WEEE as in directive 2012/19/EU) which should not be mixed with unsorted household waste. Instead, you should protect human health and the environment by handing over your waste equipment to a designated collection point for the recycling of waste electrical and electronic equipment, appointed by the government or local authorities. Correct disposal and recycling will help prevent potential negative consequences to the environment and human health, Please contact the installer or local authorities for more information about the location as well as terms and conditions of such collection points.

Shenzhen Soloff Technologies Co., Ltd.

3F & 6F, Bldg. A, No. 663, Belong Rd, Shenzhen, Guangdong,



Documents / Resources

	SONOFF ZBBridge-U V1.0 Zigbee Bridge Ultra [pdf] User Guide ZBBridge-U V1.0, ZBBridge-U V1.0 Zigbee Bridge Ultra, ZBBridge-U V1.0 Bridge Ultra, Zigbee Bridge Ultra, Bridge Ultra, Ultra
---	---

References

- [User Manual](#)

Manuals+, Privacy Policy

This website is an independent publication and is neither affiliated with nor endorsed by any of the trademark owners. The "Bluetooth®" word mark and logos are registered trademarks owned by Bluetooth SIG, Inc. The "Wi-Fi®" word mark and logos are registered trademarks owned by the Wi-Fi Alliance. Any use of these marks on this website does not imply any affiliation with or endorsement.