

SONOFF ZB Bridge-P Pro Wireless Gateway User Guide

[Home](#) » [SonOFF](#) » SONOFF ZB Bridge-P Pro Wireless Gateway User Guide 

Contents

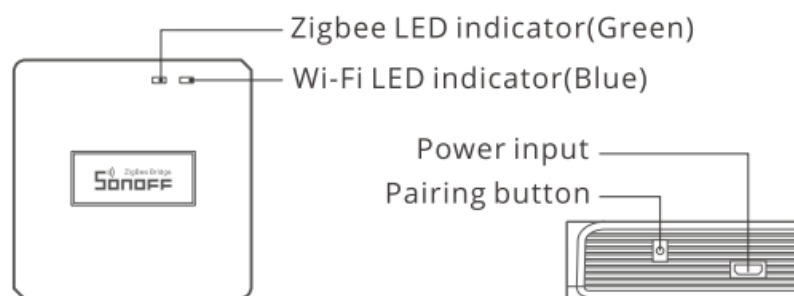
- [1 ZB Bridge-P Pro Wireless Gateway](#)
- [2 Product Introduction](#)
- [3 LED indicator status instruction](#)
- [4 Features](#)
- [5 Compatible Pairing Mode](#)
- [6 Specifications](#)
- [7 Cancel the alarm sounds](#)
- [8 Factory Reset](#)
- [9 Common Problems](#)
- [10 FCC](#)
- [11 more info](#)
- [12 Documents / Resources](#)
 - [12.1 References](#)



ZB Bridge-P Pro Wireless Gateway



Product Introduction



- The device weight is less than 1 kg. The installation height of less than 2 mis recommended.

LED indicator status instruction

LED indicator status	Status instruction
Blue LED flashes (two short and one long)	Pairing Mode
Blue LED flashes quickly	Compatible Pairing Mode {AP}
Blue LED keeps on	Device is Oline
Blue LED flashes quickly once	Fail to Connect to Router
Blue LED flashes quickly twice	Connected to Router but Fail to Connect to Serve
Blue LED flashes quickly three times	Firmware Updating
Green LED flashes slowly	Searching and adding sub-devices

Features

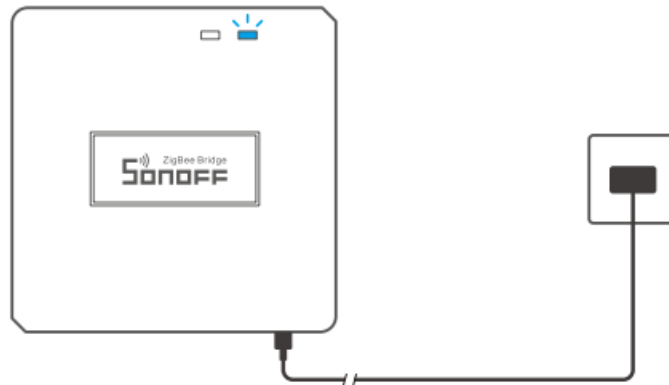
- This is a Zigbee Bridge that allows you to control a variety of Zigbee devices by transforming Wi-Fi into Zigbee. You can remotely turn on/off or schedule on/off connected Zig bee devices, or share it with your family to control them together.

Operating Instruction

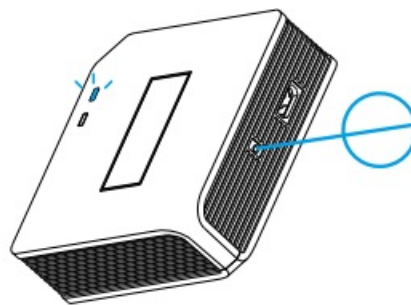
- **Download**



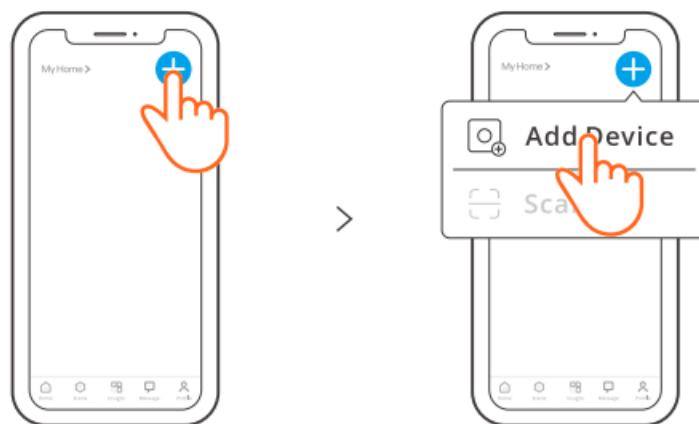
- **Power on**



- Power the device through Micro USB cable. After powering on, the device will enter the Pairing Mode during the first use. The Wi-Fi LED indicator changes in a cycle of two short and one long flash and release.
- The device will exit the Pairing Mode if not paired within 3mins. If you want to enter this mode, please long press pairing button for about 5s until the Wi-Fi LED indicator changes in a cycle of two short and one long flash and release.

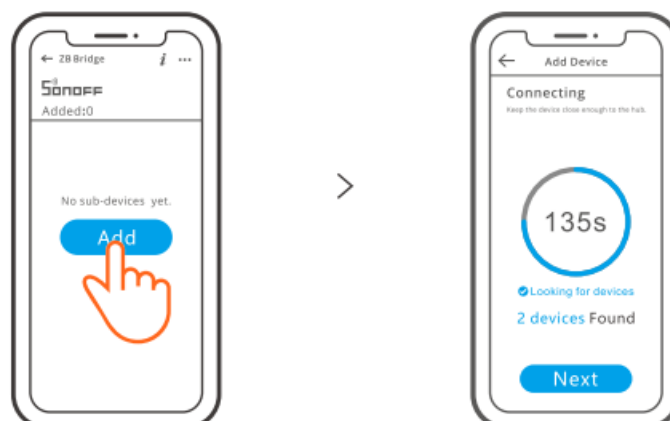


• Add Zigbee Bridge



- Tap “+” and select “Add Device”, then operate following the prompt on the App.

• Add Zigbee sub-devices to Zigbee Bridge



- Make the sub-devices enter the pairing mode, tap “Add” icon on the Zigbee Bridge interface, then wait it to find

the sub-devices and pair.

ZB Bridge-P can connect 26 sub-devices directly, one router-device can expand to connect 20 sub-devices, one bridge can connect up to 128 sub-devices.

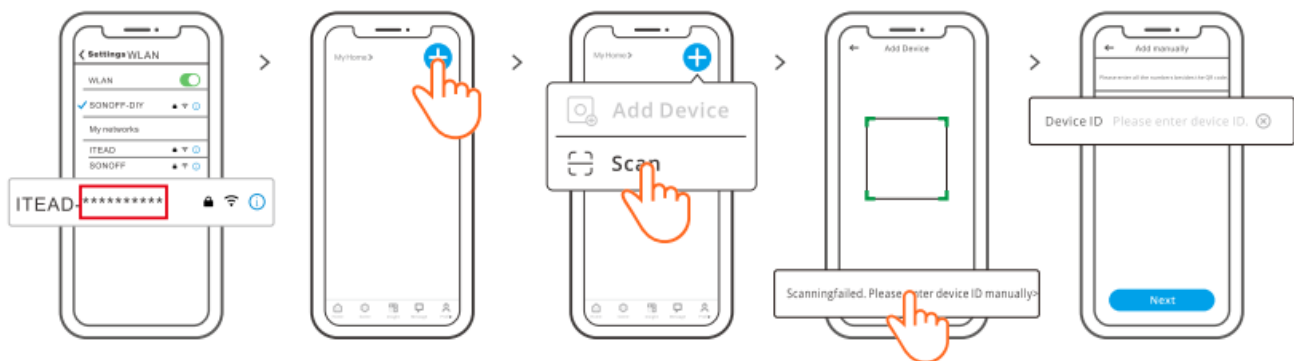
Compatible Pairing Mode

- If you fail to enter Pairing Mode, please try “Compatible Pairing Mode” to pair.
- Long press Pairing button for 5s until the Wi-Fi LED indicator changes in a cycle of two short flashes and one long flash and release. Long press Pairing button for 5s again until the Wi-Fi LED indicator flashes quickly. Then, the device enters Compatible Pairing Mode.

For Android system:

- Tap “+” and select “Compatible Pairing Mode” on app, Please follow the app prompts.

For iOS system:



- CD When the device is in the compatible mode, please record the device ID ITEAD-*****, which can be found in the Wi-Fi list of the mobile phone.
- Return to the eWeLink app, tap “+”, select “Scan”, then tap “Manual Input” at the bottom of the screen. Enter the recorded device ID and tap “Next” to complete the addition.

Specifications

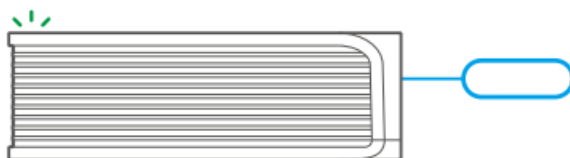
Model	ZB Bridge-P
Input	5V=1A
Wireless connections	Wi-Fi IEEE 802.11 b/g/n 2.4GHz, Zigbee 3.0
App operating systems	Android & iOS
Working temperature	-10°C~40°C
Casing Material	PCV0
Product Size	62x62x20mm

Cancel the alarm sounds

- ZB Bridge-P can be muted through following any method:
1. Press the gateway pairing button with a pin card.
 2. Click the red “speaker” icon on the gateway interface of eWeLink App.
 3. Mute the gateway through scene control settings.

Factory Reset

1. **Delete Zigbee sub-devices** Long press the pairing button for 10s until the Zig bee LED indicator “flashes twice”, then all the paired Zigbee sub-devices have been deleted. If you want to delete one of the Zigbee sub-devices, delete it on the App.



2. **Delete the Bridge** Tap “Delete device” in the setting interface of the Bridge on the App, the device will be reset to factory setting.

Common Problems

Fail to pair Wi-Fi devices to eWelinkAPP

1. Make sure the device is in pairing mode. After three minutes of unsuccessful pairing, the device will

automatically exit pairing mode.

2. Please turn on location services and allow location permission. Before choosing the Wi-Fi network, location services should be turned on and location permission should be allowed. Location information permission is used to obtain Wi-Fi list information. If you click Disable, you will not be able to add devices.
3. Make sure your Wi-Fi network runs on the 2.4GHz band.
4. Make sure you entered the correct Wi-Fi SSID and password, with no special characters contained. Wrong password is a very common reason for pairing failure.
5. The device shall get close to the router for a good transmission signal condition while pairing.

Wi-Fi devices “Offline” issue, Please check the following problems by the Wi-Fi LED indicator status:

The LED indicator blinks once every 2s means you failed to connect to the router.

1. Maybe you entered the wrong Wi-Fi SSID and password.
2. Make sure that your Wi-Fi SSID and password don't contain special characters, for example, Hebrew, or Arabic characters, our system can't recognize these characters and then fail to connect to the Wi-Fi.
3. Maybe your router has a lower carrying capacity.
4. Maybe the Wi-Fi strength is weak. Your router is too far away from your device, or there may be some obstacle between the router and the device which blocks the signal transmission.
5. Be sure that the MAC of the device is not on the blacklist of your MAC management.

The LED indicator flashes twice on repeated means you failed to connect to the server.

1. Make sure the Internet connection is working. You can use your phone or PC to connect to the Internet, and if it fails to access, please check the availability of the Internet connection.
2. Maybe your router has a low carrying capacity. The number of devices connected to the router exceeds its maximum value. Please confirm the maximum number of devices that your router can carry. If it exceeds, please delete some devices or get a larger router and try again.
3. Please contact your ISP and confirm our server address is not shielded:
 - cn-disp. coolkit.cc (China Mainland)
 - as-disp. coolkit.cc (in Asia except China)
 - eu-disp .coolkit.cc (in EU)
 - us-dis p.coolkit.cc (in US)

FCC

FCC compliance statement

Changes or modifications not expressly approved by the party responsible for compliance could avoid the user's authority to operate the equipment.

This device complies with part 15 of the FCC Rules. Operation is subject to the following two conditions:

1. This device may not cause harmful interference,
2. this device must accept any interference received, including interference that may cause undesired operation.

FCC Radiation Exposure Statement:

This equipment complies with FCC radiation exposure limits set forth for an uncontrolled environment. This equipment should be installed and operated with a minimum distance of 20 cm between the radiator & your body.

This transmitter must not be co-located or operating in conjunction with any other antenna or transmitter.

Note:

This equipment has been tested and found to comply with the limits for a Class B digital device, under part 15 of the FCC Rules. These limits are designed to provide reasonable protection against harmful interference in a residential installation. This equipment generates, uses, and can radiate radio frequency energy and, if not installed and used by the instructions, may cause harmful interference to radio communications. However, there is no guarantee that interference will not occur in a particular installation. Suppose this equipment does cause harmful interference to radio or television reception, which can be determined by turning the equipment off and on. In that case, the user is encouraged to try to correct the interference by one or more of the following measures:

- Reorient or relocate the receiving antenna.
- Increase the separation between the equipment and the receiver.
- Connect the equipment to an outlet on a circuit different from that to which the receiver is connected.
- Consult the dealer or an experienced radio/TV technician for help.

ISED Notice

This device contains license-exempt transmitter(s)/receiver(s) that comply with Innovation, Science and Economic Development Canada's license-exempt RSS(s). Operation is subject to the following two conditions:

1. This device may not cause interference.
2. This device must accept any interference, including interference that may cause undesired operation of the device.

This Class B digital apparatus complies with Canadian ICES-003. This device complies with RSS-247 of Industry Canada. Operation is subject to the condition that this device does not cause harmful interference.

ISED Radiation Exposure Statement

- This equipment complies with IC radiation exposure limits set forth for an uncontrolled environment.
- This equipment should be installed and operated with a minimum distance of 20 cm between the radiator and your body.
- This transmitter must not be co-located or operating in conjunction with any other antenna or transmitter.

EU Declaration of Conformity

Hereby, Shenzhen Sonoff Technologies Co., Ltd. declares that the radio equipment type ZB Bridge-P complies with Directive 2014/53/EU. The full text of the EU declaration of conformity is available at the following internet address:

<https://sonoff.tech/compliance/>



• **WEEE Disposal and Recycling Information**

- All products bearing this symbol are waste electrical and electronic equipment (WEEE as in directive 2012/19/EU) which should not be mixed with unsorted household waste. Instead, you should protect human health and the environment by handing over your waste equipment to a designated collection point for the recycling of waste electrical and electronic equipment, appointed by the government or local authorities. Correct disposal and recycling will help prevent potential negative consequences to the environment and human health. Please contact the installer or local authorities for more information about the location as well as terms and conditions of such collection points.

For CE Frequency

- EU Operating Frequency Range
- **Wi-Fi:** 802.11 b/g/n20: 2412-2472 MHz, 802.11 n40: 2422-2462 MHz
- **Zigbee :** 2405-2480 MHz
- EU Output Power
- Wi-Fi 2.4GQ0dBm
- Zigbee1 0dBm



WARNING

- **Do not** ingest battery, Chemical Burn Hazard.
- This product contains a coin/ button cell battery.If the coin/ button cell battery is swallowed, it can cause severe internal burns in just 2 hours and can lead to death.
- Keep new and used batteries away from children.
- If the battery compartment does not close securely, stop using the product and keep it away from children.
- If you think batteries might have been swallowed or placed inside any part of the body, seek immediate medical attention.
- Replacement of a battery with an incorrect type that can defeat a safeguard (for example, in the case of some lithium battery types).
- Disposal of a battery into fire or a hot oven, or mechanically crushing or cutting of a battery, that can result in an explosion.
- Leaving a battery in an extremely high temperature surrounding environment that can result in an explosion or the leakage of flammable liquid or gas.
- A battery subjected to extremely low air pressure that may result in an explosion or the leakage of flammable liquid or gas.

UL 4200A compliance statement

WARNING

- **INGESTION HAZARD:** This product contains a button cell or coin battery.
- **DEATH** or serious injury can occur if ingested.
- A swallowed button cell or coin battery can cause **Internal Chemical Burns** in as little as **2 hours**.
- KEEP new and used batteries **OUT OF REACH of CHILDREN**.
- **Seek immediate medical attention** if a battery is suspected to be swallowed or inserted inside any part of the body.

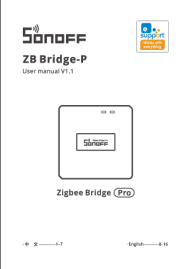


- Remove and immediately recycle or dispose of used batteries according to local regulations and keep away from children. Do NOT dispose of batteries in household trash or incinerate.
- Even used batteries may cause severe injury or death.
- Call a local poison control center for treatment information .
- Compatible battery type: ML621-TZ1
- Nominal battery voltage: 3V
- Non-rechargeable batteries are not to be recharged.
- **Do not** force discharge, recharge, disassemble, heat above 60°C or incinerate. Doing so may result in injury due to venting, leakage or explosion resulting in chemical burns.
- The product contains non-replaceable batteries.

more info

- Shenzhen SonoffTechnologies Co., Ltd.
- Address: 3F & 6F, Bldg A, No. 663, Bu
- Website: sonoff.tech
- Service email: support@itead.cc

Documents / Resources

	<p>SONOFF ZB Bridge-P Pro Wireless Gateway [pdf] User Guide ZB Bridge-P Pro Wireless Gateway, ZB Bridge-P, Pro Wireless Gateway, Wireless Gateway, Gateway</p>
---	---

References

- [User Manual](#)

Manuals+, Privacy Policy

This website is an independent publication and is neither affiliated with nor endorsed by any of the trademark owners. The "Bluetooth®" word mark and logos are registered trademarks owned by Bluetooth SIG, Inc. The "Wi-Fi®" word mark and logos are registered trademarks owned by the Wi-Fi Alliance. Any use of these marks on this website does not imply any affiliation with or endorsement.