

**SONOFF**  
SONOFF ZB  
Bridfge-p  
Smart Wi-Fi-  
ZigBee



# SONOFF ZB Bridfge-p Smart Wi-Fi-ZigBee User Guide

[Home](#) » [SonOFF](#) » SONOFF ZB Bridfge-p Smart Wi-Fi-ZigBee User Guide 

## Contents

- [1 SONOFF ZB Bridfge-p Smart Wi-Fi-ZigBee](#)
- [2 Instructions](#)
- [3 FCC compliance statement](#)
- [4 Documents / Resources](#)
  - [4.1 References](#)
- [5 Related Posts](#)

**SONOFF**

**SONOFF ZB Bridfge-p Smart Wi-Fi-ZigBee**

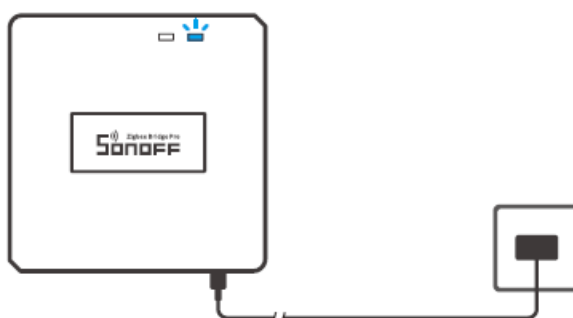


## Instructions

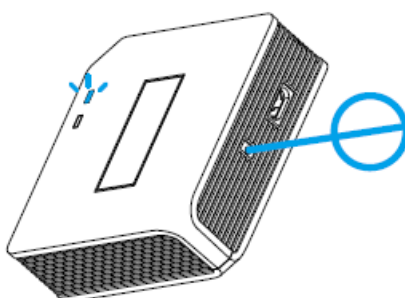
### 1. Download the eWeLink App



Power the device through Micro USB cable. After powering on, the device will enter the Pairing Mode during the first use. The Wi-Fi LED indicator changes in a cycle of two short and one long flash and release.

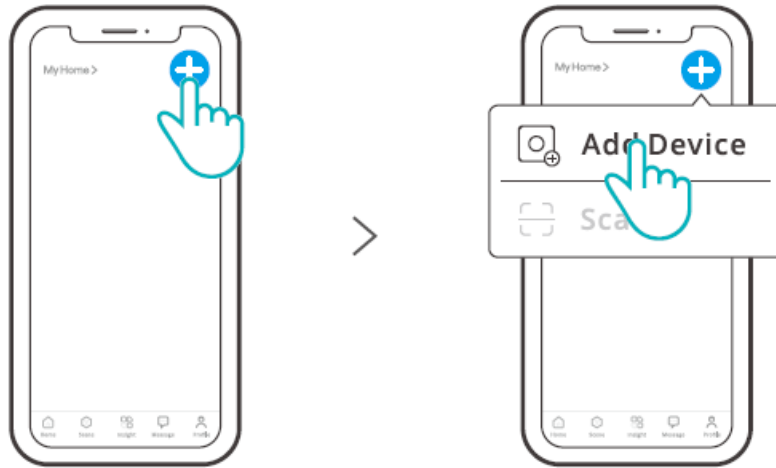


The device will exit the Pairing Mode if not paired within 3mins. If you want to enter this mode, please long press pairing button for about 5s until the Wi-Fi LED indicator changes in a cycle of two short and one long flash and release.



## 2. Add Zigbee Bridge

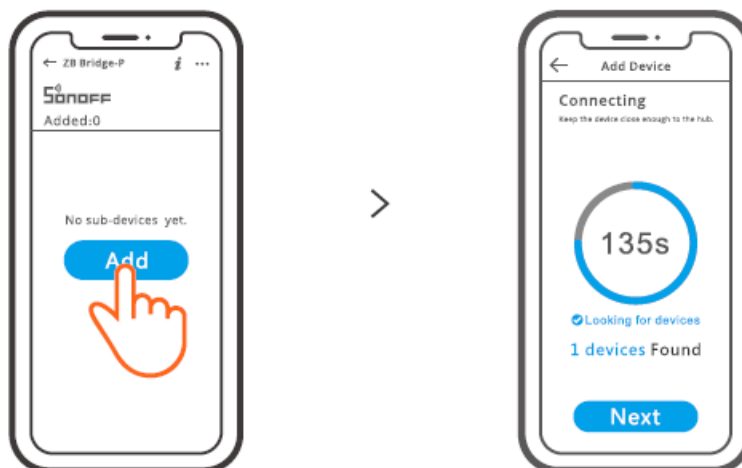
Tap “+1” and select “Add Device”, then operate following the prompt on the App.



It's required to turn on the Bluetooth on your Phone when adding a device.

## 3. Add Zigbee sub-devices to Zigbee Bridge

Make the sub-devices enter the pairing mode, tap “Add” icon on the Zigbee Bridge interface, then wait it to find the sub-devices and pair.



Through connecting the routers, single Zigbee Bridge can add up to 128 sub-devices.

## User Manual



<https://sonoff.tech/usermanuals>

Scan the QR code or visit the website to learn about the detailed user manual and help.

## FCC compliance statement

1. This device complies with part 15 of the FCC Rules. Operation is subject to the following two conditions:
  1. This device may not cause harmful interference, and
  2. This device must accept any interference received, including interference that may cause undesired operation.
2. Changes or modifications not expressly approved by the party responsible for compliance could void the user's authority to operate the equipment.

**Note:** This equipment has been tested and found to comply with the limits for a Class B digital device, pursuant to part 15 of the FCC Rules. These limits are designed to provide reasonable protection against harmful interference in a residential installation. This equipment generates, uses and can radiate radio frequency energy and, if not installed and used in accordance with the instructions, may cause harmful interference to radio communications. However, there is no guarantee that interference will not occur in a particular installation. If this equipment does cause harmful interference to radio or television reception, which can be determined by turning the equipment off and on, the user is encouraged to try to correct the interference by one or more of the following measures:

- Reorient or relocate the receiving antenna.
- Increase the separation between the equipment and receiver.
- Connect the equipment into an outlet on a circuit different from that to which the receiver is connected,
- Consult the dealer or an experienced radio/ TV technician for help.

#### **FCC Radiation Exposure statement:**

- This equipment complies with FCC radiation exposure limits set forth for an uncontrolled environment.
- This equipment should be installed and operated with minimum distance of 20 cm between the radiator and your body.
- This transmitter must not be co-located or operating in conjunction with any other antenna or transmitter.

#### **ISED Notice**

- This device contains licence-exempt transmitter(s)/receiver(s) that comply with Innovation,
- Science and Economic Development Canada's licence-exempt RSS(s).

Operation is subject to the following two conditions

1. This device may not cause interference.
2. This device must accept any interference, including interference that may cause undesired operation of the device.

This Class B digital apparatus complies with Canadian ICES-003. This device complies with RSS-247 of Industry Canada. Operation is subject to the condition that this device does not cause harmful interference.

#### **ISED Radiation Exposure Statement**

- This equipment complies with IC radiation exposure limits set forth for an uncontrolled environment.
- This equipment should be installed and operated with minimum distance of 20 cm between the radiator and your body.

- This transmitter must not be co-located or operating in conjunction with any other antenna or transmitter.

### **Warning**

Under normal use of condition, this equipment should be kept a separation distance of at least 20 cm between the antenna and the body of the user.

### **For CE Frequency**

- EU Operating Frequency Range
- Wi-Fi: 802.11 b/g/n20: 2412-2472 MHz,
- 802.11 n40: 2422-2462 MHz
- BLE: 2402-2480 MHz
- Zigbee : 2405-2480 MHz

### **EU Output Power**

- Wi-Fi 2.4Gs20dBm
- OdBm
- Zigbeesl OdBm

### **EU Declaration of Conformity**

Hereby, Shenzhen Sonoff Technologies Co., Ltd. declares that the radio equipment type ZB Bridge-P is in compliance with Directive 2014/53/EU. The full text of the EU declaration of conformity is available at the following internet address: <https://sonoff.tech/compliance/>



### **WEEE Disposal and Recycling Information**

All products bearing this symbol are waste electrical and electronic equipment (WEEE as in directive 2012/19/EU) which should not be mixed with unsorted household waste. Instead, you should protect human health and the environment by handing over your waste equipment to a designated collection point for the recycling of waste electrical and electronic equipment, appointed by the government or local authorities. Correct disposal and recycling will help prevent potential negative consequences to the environment and human health. Please contact the installer or local authorities for more information about the location as well as terms and conditions of such collection points.

### **WARNING**

- Do not ingest battery, Chemical Burn Hazard.
- This product contains a coin / button cell battery .If the coin / button cell battery is swallowed, it can cause severe internal burns in just 2 hours and can lead to death.
- Keep new and used batteries away from children.
- If the battery compartment does not close securely, stop using the product and keep it away from children.
- If you think batteries might have been swallowed or placed inside any part of the body, seek immediate medical attention.
- Replacement of a battery with an incorrect type that can defeat a safeguard (for example, in the case of some lithium battery types).

- Disposal of a battery into fire or a hot oven, or mechanically crushing or cutting of a battery, that can result in an explosion.
- Leaving a battery in an extremely high temperature surrounding environment that can result in an explosion or the leakage of flammable liquid or gas.
- A battery subjected to extremely low air pressure that may result in an explosion or the leakage of flammable liquid or gas.

## Manufacturer

- Shenzhen SonoffTechnologies Co., Ltd.
- **Address:** 1001 , BLDG8, Lianhua Industrial Park, shenzhen, GD, China
- **ZIP code:** 518000
- MADE IN CHINA
- **Website:** [sonoff.tech](http://sonoff.tech)



## UL 4200A compliance statement

### WARNING

- **INGESTION HAZARD:** This product contains a button cell or coin battery.
- **DEATH** or serious injury can occur if ingested.
- A swallowed button cell or coin battery can cause Internal Chemical Burns in as little as 2 hours.
- **KEEP** new and used batteries OUT OF REACH of CHILDREN.
- Seek immediate medical attention if a battery is suspected to be swallowed or inserted inside any part of the body.
- Remove and immediately recycle or dispose of used batteries according to local regulations and keep away from children. Do NOT dispose of batteries in household trash or incinerate.
- Even used batteries may cause severe injury or death.
- Call a local poison control center for treatment information .
- **Compatible battery type:** ML621 -TZI
- **Nominal battery voltage:** 3V
- Non-rechargeable batteries are not to be recharged.
- Do not force discharge, recharge, disassemble, heat above 600C or incinerate. Doing so may result in injury due to venting, leakage or explosion resulting in chemical burns.
- The product contains non-replaceable batteries.

## Documents / Resources



[SONOFF ZB Bridge-p Smart Wi-Fi-ZigBee \[pdf\] User Guide](#)  
ZB Bridge-p, ZB Bridge-p Smart Wi-Fi-ZigBee, Smart Wi-Fi-ZigBee, Wi-Fi-ZigBee, ZigBee

## References

- [User Manual](#)

[Manuals+](#), [Privacy Policy](#)

This website is an independent publication and is neither affiliated with nor endorsed by any of the trademark owners. The "Bluetooth®" word mark and logos are registered trademarks owned by Bluetooth SIG, Inc. The "Wi-Fi®" word mark and logos are registered trademarks owned by the Wi-Fi Alliance. Any use of these marks on this website does not imply any affiliation with or endorsement.