



SONOFF Wi-Fi Smart Switch User Manual

[Home](#) » [SonOFF](#) » SONOFF Wi-Fi Smart Switch User Manual

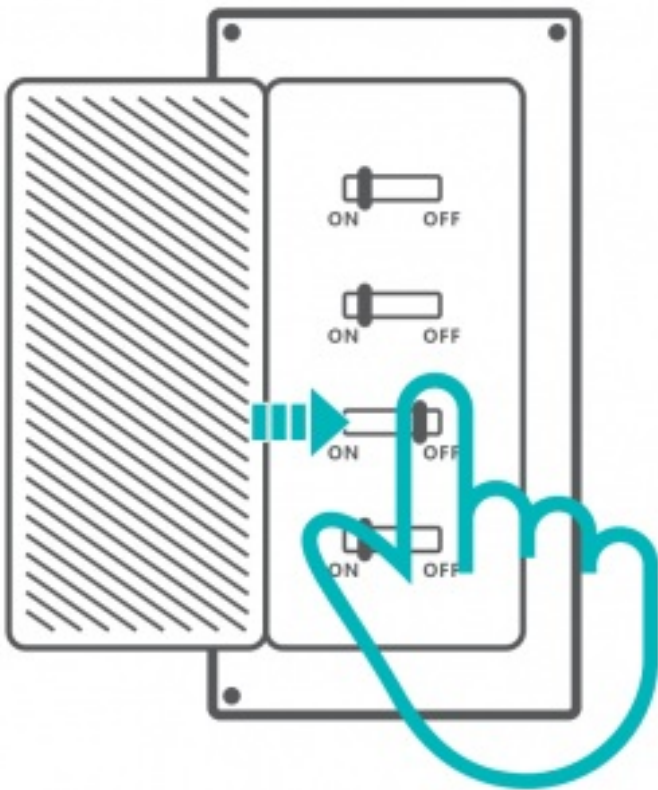
SONOFF Wi-Fi Smart Switch



Contents [[hide](#)

- [1 Power Off](#)
- [2 Wiring instruction](#)
- [3 Download The APP](#)
- [4 Power On](#)
- [5 Add The Device](#)
- [6 User Manual](#)
- [7 FCC Warning](#)
- [8 Documents / Resources](#)
- [9 Related Posts](#)

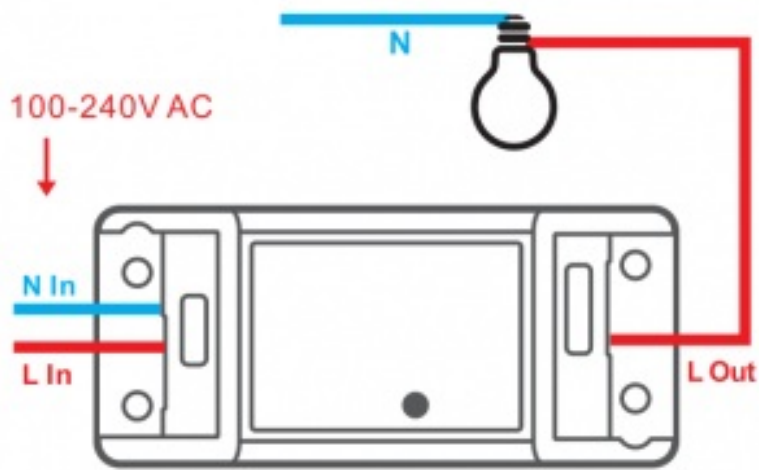
Power Off



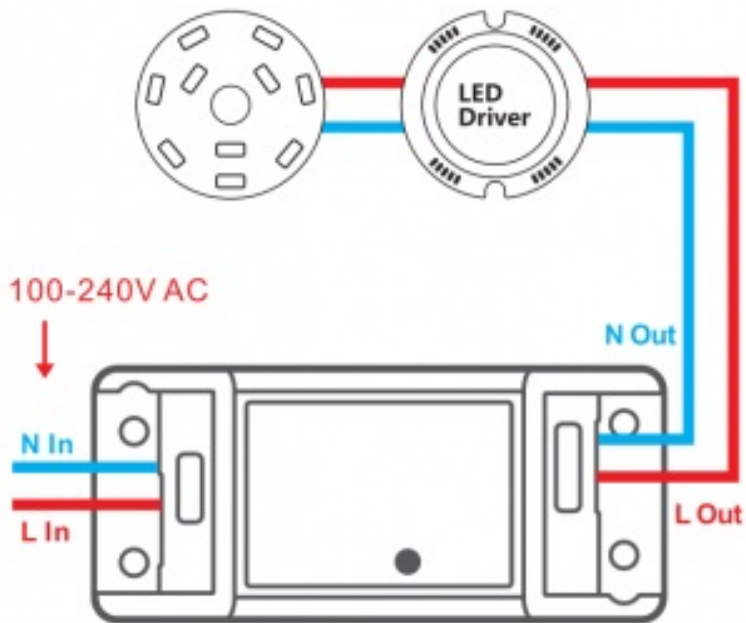
To avoid electric shocks, please consult the dealer or a qualified professional for help when installing and repairing.

Wiring instruction

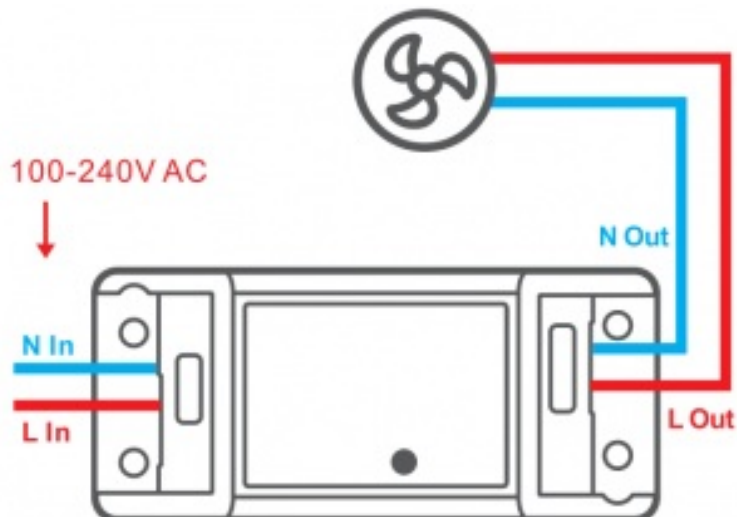
- One live wire wiring instruction



- Ceiling lamp wiring instruction

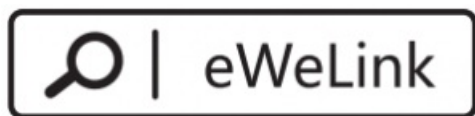


- Appliance wiring instruction



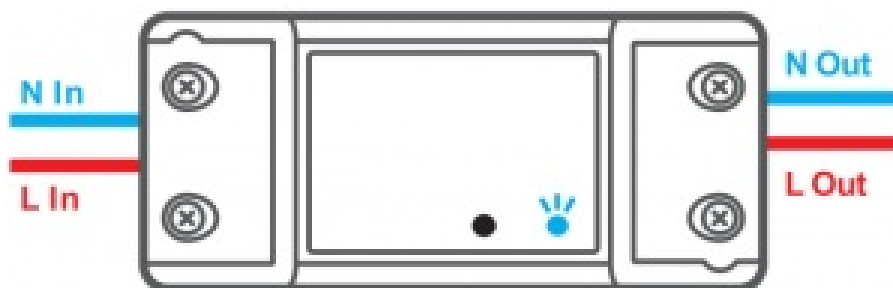
⚠ Make sure the neutral wire and live wire connection is correct.

Download The APP



Power On

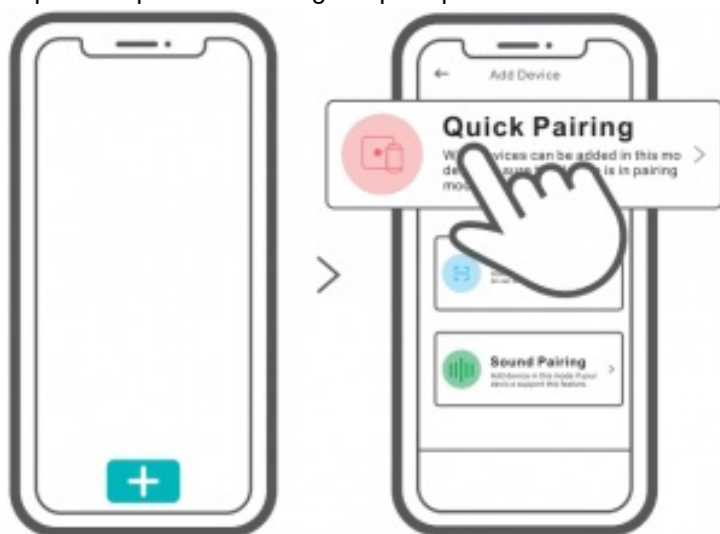
After powering on, the device will enter the quick pairing mode (Touch) during the first use.



! The device will exit the quick pairing mode (Touch) if Wi-Fi connection is not successful within 3mins. If you want to enter this mode, please long press the manual button for about 5s until the Wi-Fi LED indicator changes in a cycle of two short and one long flash and release.

Add The Device

Tap "+" to operate following the prompt on the APP.



User Manual

Scan the QR code or visit the website to learn the detailed user guide.



FCC Warning

Changes or modifications not expressly approved by the party responsible for compliance could void the user's

authority to operate the equipment.

This device complies with part 15 of the FCC Rules. Operation is subject to the following two conditions: (1) This device may not cause harmful interference, and (2) this device must accept any interference received, including interference that may cause undesired operation.

FCC Radiation Exposure Statement:

This equipment complies with FCC radiation exposure limits set forth for an uncontrolled environment. This equipment should be installed and operated with minimum distance 20cm between the radiator & your body. This transmitter must not be co-located or operating in conjunction with any other antenna or transmitter.

Note:

This equipment has been tested and found to comply with the limits for a Class B digital device, pursuant to part 15 of the FCC Rules. These limits are designed to provide reasonable protection against harmful interference in a residential installation. This equipment generates, uses and can radiate radio frequency energy and, if not installed and used in accordance with the instructions, may cause harmful interference to radio communications. However, there is no guarantee that interference will not occur in a particular installation. If this equipment does cause harmful interference to radio or television reception, which can be determined by turning the equipment off and on, the user is encouraged to try to correct the interference by one or more of the following measures:

- Reorient or relocate the receiving antenna.
- Increase the separation between the equipment and receiver.
- Connect the equipment into an outlet on a circuit different from that to which the receiver is connected.
- Consult the dealer or an experienced radio/ TV technician for help.

Hereby, Shenzhen Son off Technologies Co., Ltd. declares that the radio equipment type BASICR2/RFR2 is in compliance with Directive 2014/53/EU .The full text of the EU declaration of conformity is available at the following internet address:

<https://www.sonoff.tech/usermanuals>

TX Frequency:

WiFi: 2412-2472MHz

RX Frequency:

WiFi: 2412-2472MHz

SRO: 433.92MHz (RFR2)

Output Power:

14.43dBm(802.11 b),

11.94dBm(802.11 g),

11.96dBm(802.11 n20)

Shenzhen Sonoff Technologies Co., Ltd.

Room 1001 , 1 OF, Building 8, Lianhua Industrial Park, Longyuan Road, Longhua District, Shenzhen, GD, China

Website: <https://sonoff.tech>

ZIP code: 518000



	SONOFF Wi-Fi Smart Switch [pdf] User Manual Wi-Fi Smart Switch, BASICR2, RFR2
---	--