



Sonoff V1.5 Smart Temperature and Humidity Monitoring Switch User Guide

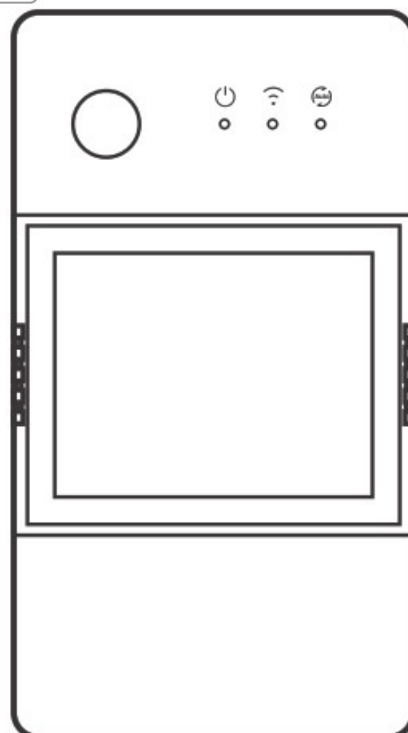
[Home](#) » [SonOFF](#) » Sonoff V1.5 Smart Temperature and Humidity Monitoring Switch User Guide 



TH Origin/Elite
Quick Guide V1.5



TH Origin



TH Elite

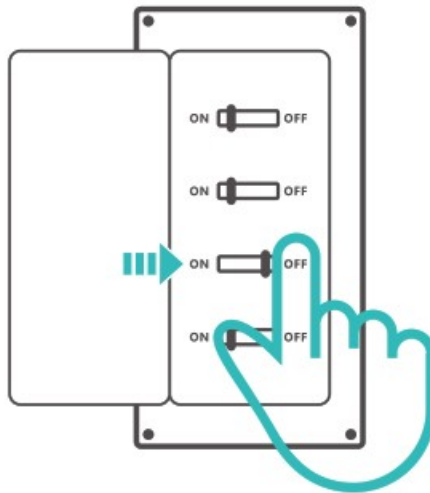
Smart Temperature and Humidity Monitoring Switch

Contents

- [1 Device Installation](#)
- [2 Device pairing](#)
- [3 Guide to eWeLink and Alexa Account Linking](#)
- [4 Documents / Resources](#)
 - [4.1 References](#)
- [5 Related Posts](#)

Device Installation

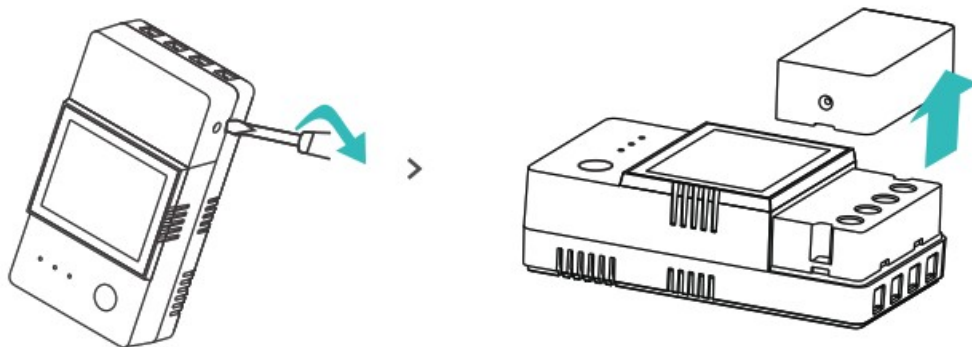
1. Power off



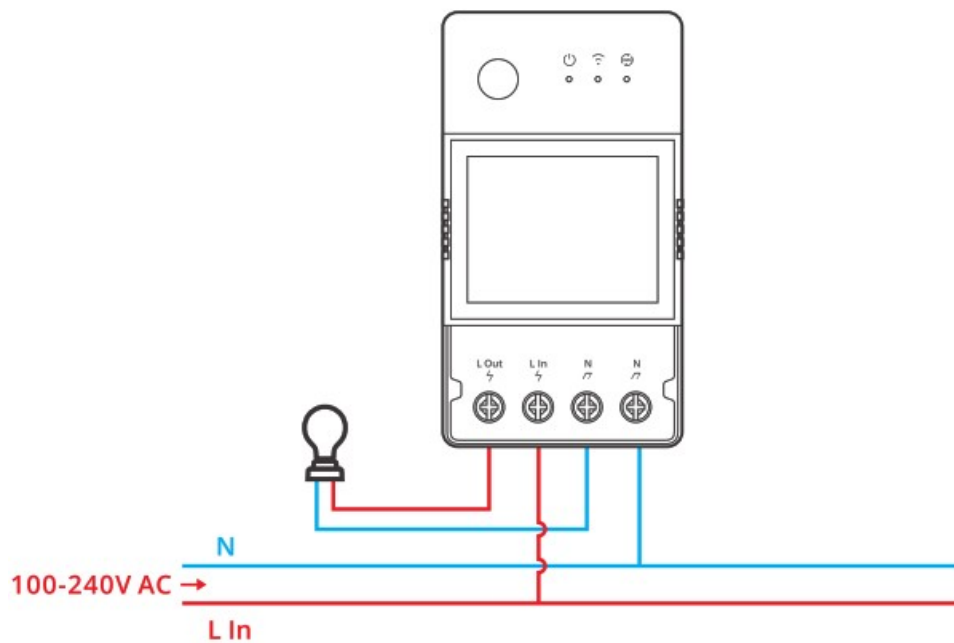
Please install and maintain the device by a professional electrician.

To avoid electric shock hazard, do not operate any connection or contact the terminal connector while the device is powered on!

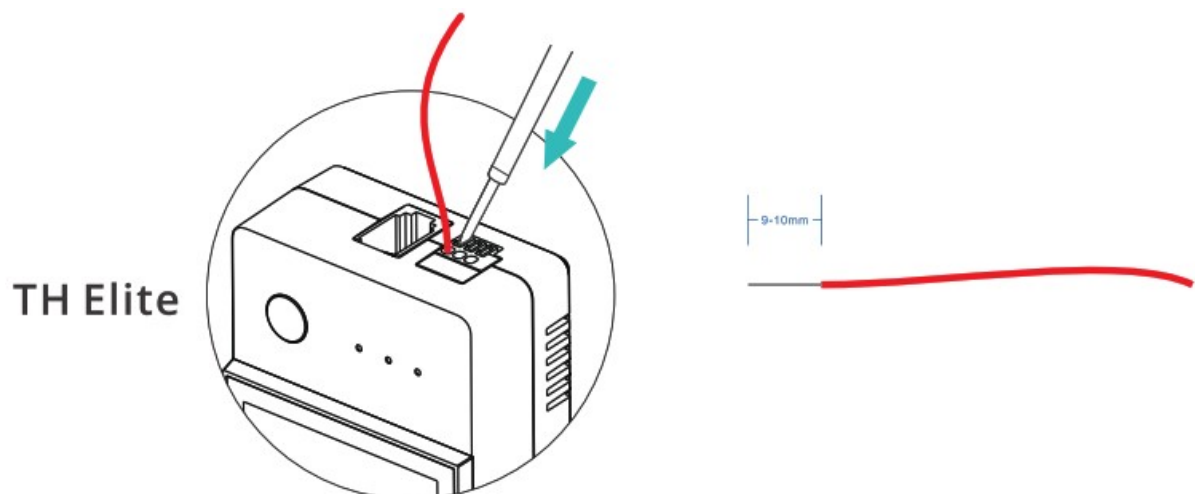
2. Wiring instruction



Remove protective cover



Wiring method of dry contact



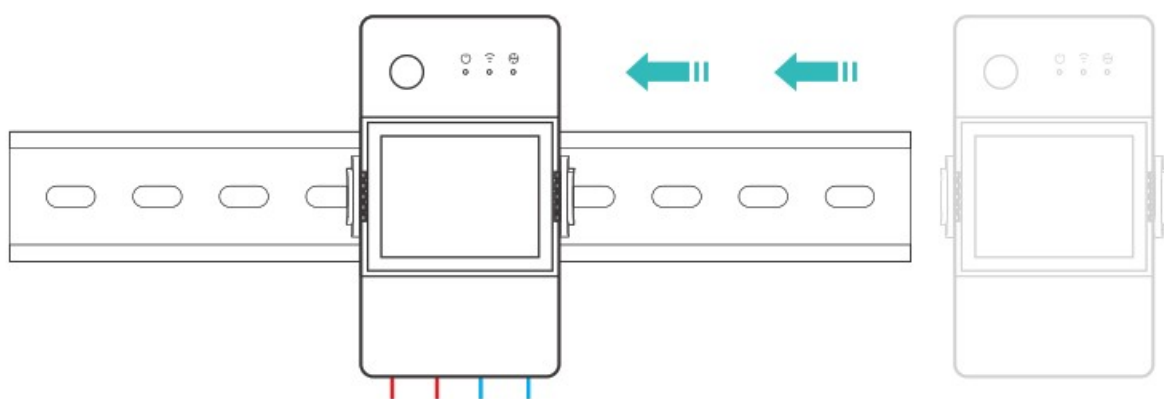
Press the white button on the top of the wire connecting hole to insert the wire corresponding, then release.



Dry contact wire conductor size: 0.13-0.5mm², wire stripping length: 9-10mm.

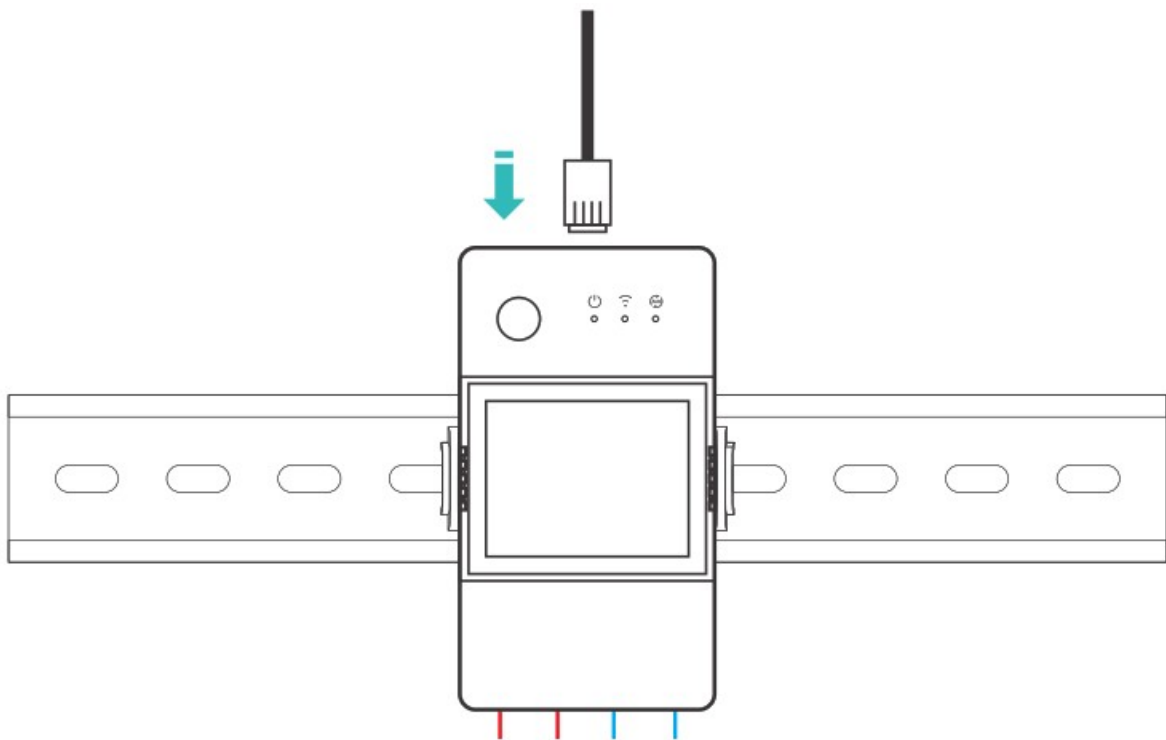
Make sure all wires are connected correctly.

3.



35mm rail installation

4. Insert the sensor



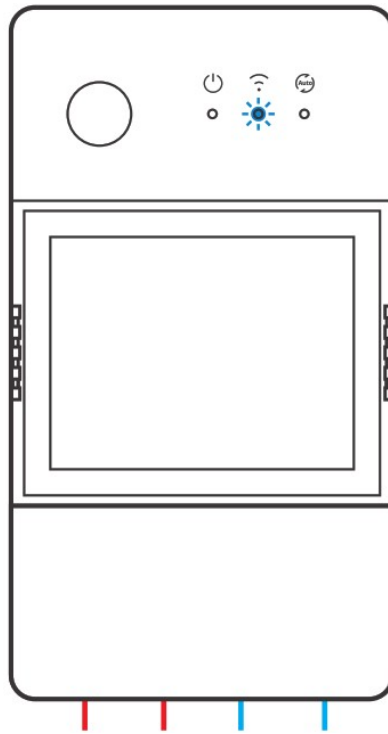
Some old version sensors need to be used with the accompanying adapter.

Device pairing

1. Download the eWeLing App



2. Power on

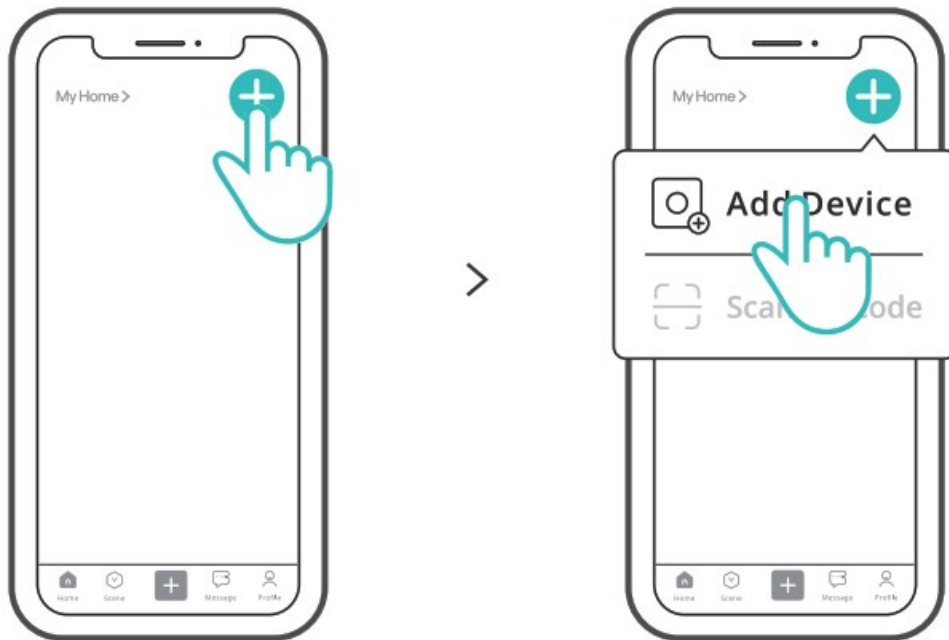


After powering on, the device will enter the Pairing Mode during the first use. The Wi-Fi LED indicator changes in a cycle of two short and one long flash and release.



The device will exit the Pairing Mode if not paired within 3mins. If you want to enter this mode, please long press button for about 5s until the Wi-Fi LED indicator changes in a cycle of two short and one long flash and release.

3. Add device



Tap “+” and select “Add Device”, then operate following the prompt on the App.



It's required to turn on the Bluetooth on your Phone when adding a device.



You can also select “Scan” in the App to pair through scanning the code on the device.

Guide to eWeLink and Alexa Account Linking

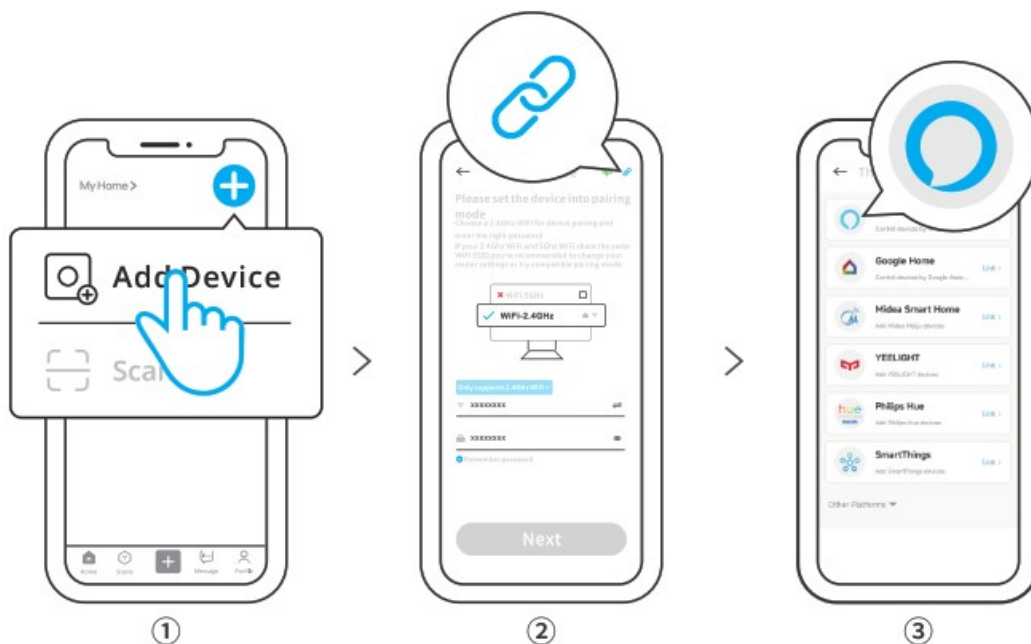
1. Download the Amazon Alexa App and sign up an account.

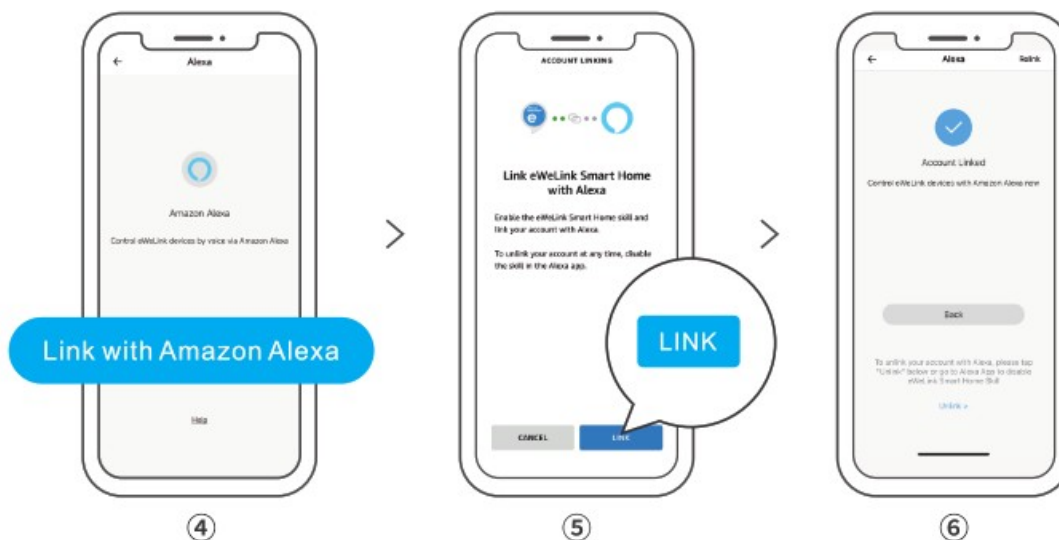


Amazon Alexa

2. Add Amazon Echo Speaker on the Alexa App

3.





Account Linking (Linking Alexa account on the eWeLink App)



After linking the account, you can discover devices to connect on the Alexa App according to the prompt.

User Manual



<https://www.sonoff.tech/usermanuals>

Scan the QR code or visit the website to learn about the detailed user manual and help.

FCC compliance statement

1. This device complies with part 15 of the FCC Rules. Operation is subject to the following two conditions:
 1. This device may not cause harmful interference, and
 2. This device must accept any interference received, including interference that may cause undesired operation.
2. Changes or modifications not expressly approved by the party responsible for compliance could void the user's authority to operate the equipment.

Note: This equipment has been tested and found to comply with the limits for a Class B digital device, pursuant to part 15 of the FCC Rules. These limits are designed to provide reasonable protection against harmful interference in a residential installation. This equipment generates, uses and can radiate radio frequency energy and, if not installed and used in accordance with the instructions, may cause harmful interference to radio communications. However, there is no guarantee that interference will not occur in a particular installation. If this equipment does cause harmful interference to radio or television reception, which can be determined by turning the equipment off and on, the user is encouraged to try to correct the interference by one or more of the following measures:

- Reorient or relocate the receiving antenna.
- Increase the separation between the equipment and receiver.
- Connect the equipment into an outlet on a circuit different from that to which the receiver is connected.

- Consult the dealer or an experienced radio/TV technician for help.

FCC Radiation Exposure statement:

This equipment complies with FCC radiation exposure limits set forth for an uncontrolled environment.

This equipment should be installed and operated with minimum distance of 20 cm between the radiator and your body.

This transmitter must not be co-located or operating in conjunction with any other antenna or transmitter.

ISED Notice

This device contains license-exempt transmitter(s)/receiver(s) that comply with Innovation, Science and Economic Development Canada's licence-exempt RSS(s).

Operation is subject to the following two conditions:

1. This device may not cause interference.
2. This device must accept any interference, including interference that may cause undesired operation of the device.

This Class B digital apparatus complies with Canadian ICES – 003(B).

This device complies with RSS – 247 of Industry Canada. Operation is subject to the condition that this device does not cause harmful interference.

ISED Radiation Exposure Statement

This equipment complies with ISED radiation exposure limits set forth for an uncontrolled environment.

This equipment should be installed and operated with minimum distance of 20 cm between the radiator and your body.

This transmitter must not be co-located or operating in conjunction with any other antenna or transmitter.

EU Declaration of Conformity

Hereby, Shenzhen Soloff Technologies Co., Ltd. declares that the radio equipment type THR316, THR316D, THR320, THR320D is in compliance with Directive 2014/53/EU. The full text of the EU declaration of conformity is available at the following internet address: <https://sonoff.tech/compliance/>

SAR Warning

Under normal use of condition, this equipment should be kept a separation distance of at least 20 cm between the antenna and the body of the user.

Scatola	Manuale	Borsa	Borsa
PAP 21	PAP 22	LDPE 4	CPE 7
Carta	Carta	Plastica	Plastica
RACCOLTA DIFFERENZIATA			

For CE Frequency

EU Operating Frequency Range

BLE: 2402-2480 MHz

Wi-Fi: 802.11 b/g/n20 2412-2472 MHz, 802.11 n40: 2422-2462 MHz

EU Output Power

BLE<10dBm

Wi-Fi 2.4G<20dBm

WEEE Disposal and Recycling Information



All products bearing this symbol are waste electrical and electronic equipment (WEEE as in directive 2012/19/EU) which should not be mixed with unsorted household waste. Instead, you should protect human health and the environment by handing over your waste equipment to a designated collection point for the recycling of waste electrical and electronic equipment, appointed by the government or local authorities. Correct disposal and recycling will help prevent potential negative consequences to the environment and human health. Please contact the installer or local authorities for more information about the location as well as terms and conditions of such collection points.

To ensure the safety of your electrical installation, it's essential either a Miniature Circuit Breaker (MCB) or a Residual Current Operated Circuit Breaker (RCBO) with an electrical rating of 16A(THR316, THR316D), 20A(THR320, THR320D) has been installed before the switch.

Shenzhen Sonoff Technologies Co., Ltd.

3F & 6F, Bldg A, No. 663, Bulong Rd, Shenzhen, Guangdong, China
ZIP code: 518000 Website: sonoff.tech Service email: support@itead.cc

MADE IN CHINA



Documents / Resources

	Sonoff V1.5 Smart Temperature and Humidity Monitoring Switch [pdf] User Guide V1.5 Smart Temperature and Humidity Monitoring Switch, V1.5, Smart Temperature and Humidity Monitoring Switch, Temperature and Humidity Monitoring Switch, and Humidity Monitoring Switch, Humidity Monitoring Switch, Monitoring Switch, Switch
--	---

References

- [User Manual](#)

[Manuals+](#), [Privacy Policy](#)

This website is an independent publication and is neither affiliated with nor endorsed by any of the trademark owners. The "Bluetooth®" word mark and logos are registered trademarks owned by Bluetooth SIG, Inc. The "Wi-Fi®" word mark and logos are registered trademarks owned by the Wi-Fi Alliance. Any use of these marks on this website does not imply any affiliation with or endorsement.