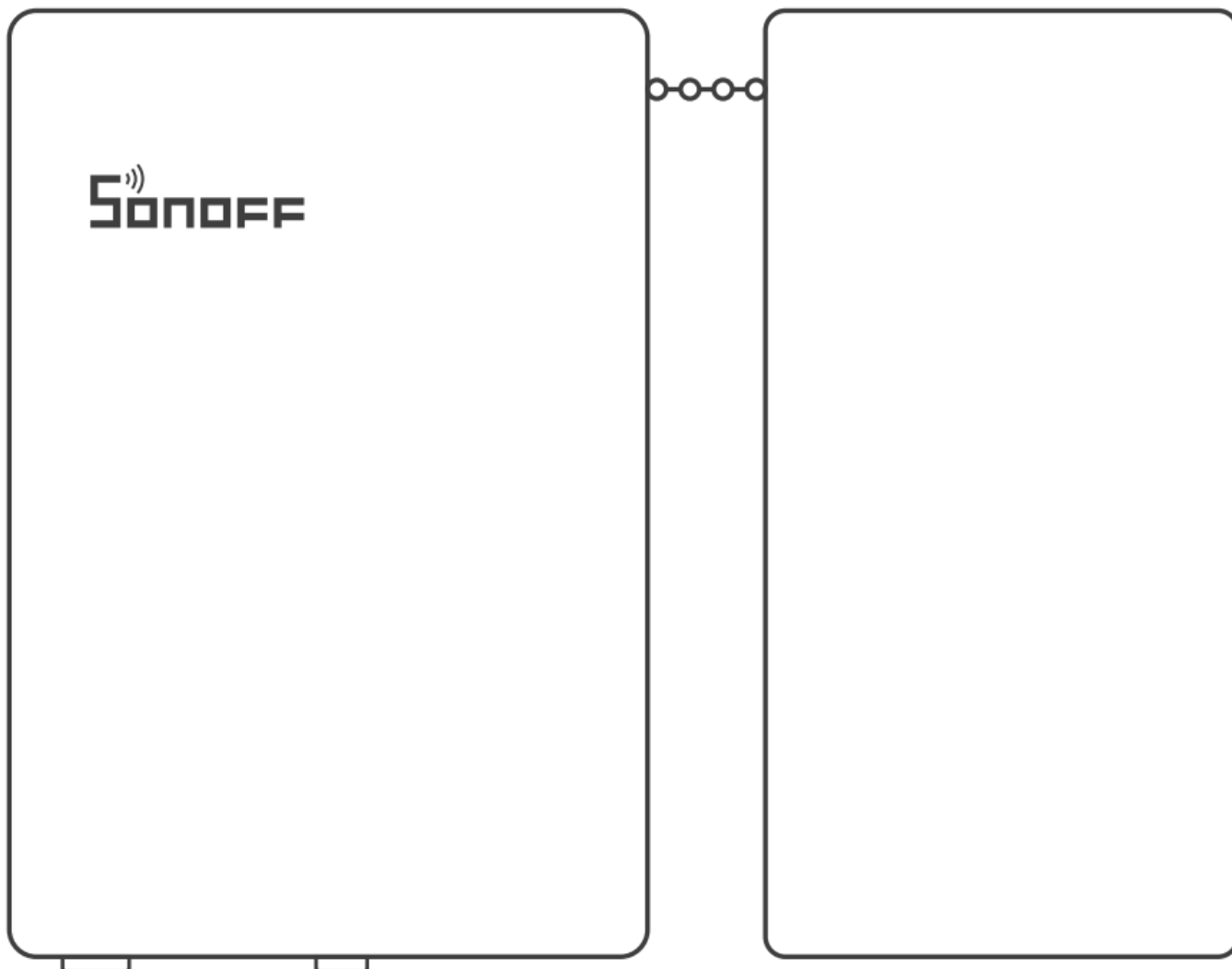




# SONOFF V1.1 ZBCurtain Remote Controller User Manual

[Home](#) » [SonOFF](#) » SONOFF V1.1 ZBCurtain Remote Controller User Manual 

SONOFF V1.1 ZBCurtain Remote Controller



## Contents

- [1 Installation tutorial](#)
- [2 Introduction](#)
- [3 Indicator Status Description](#)
- [4 Features](#)
- [5 Install the C-shape brackets](#)
- [6 Install the curtain motors](#)
- [7 Mount the curtain clamps](#)
- [8 Pair with eWeLink App](#)
- [9 Set up the curtain opening and closing limit position](#)
- [10 Charge](#)
- [11 Pairing & Clearing of Curtain Remote and Curtain Motor](#)
- [12 Specifications](#)
- [13 FCC Warning](#)
- [14 Customer Support](#)
- [15 Documents / Resources](#)
  - [15.1 References](#)
- [16 Related Posts](#)

## Installation tutorial

Please scan the QR code to watch the installation tutorial before installing the device.

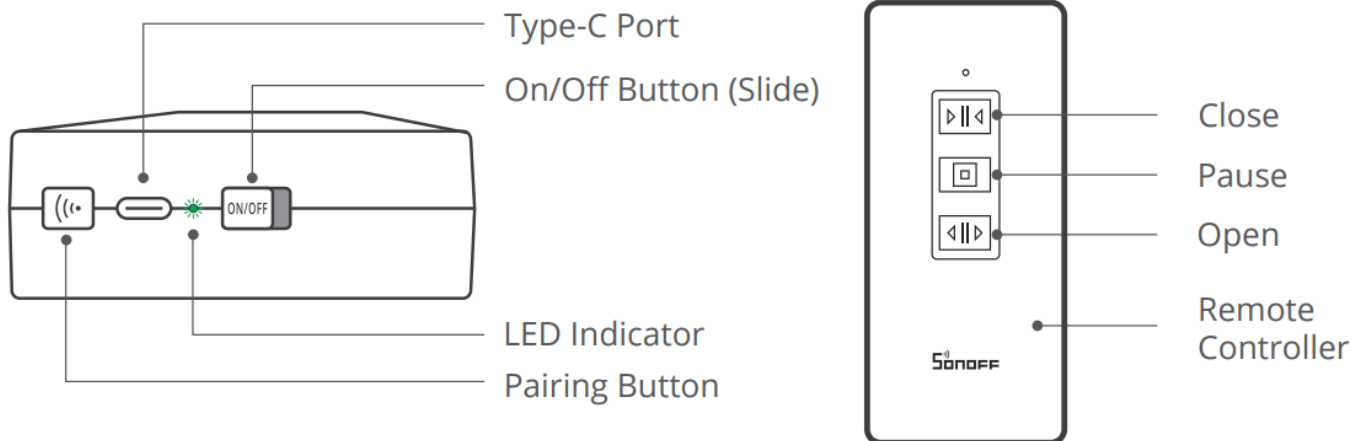
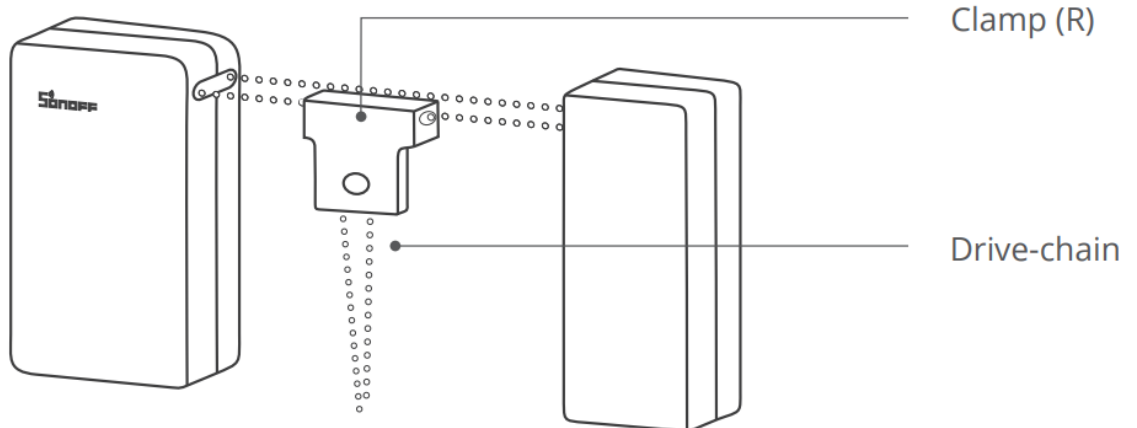


This device does not support the curtain rod and curved curtain track.



Make sure the top space of the curtain track is greater than 2mm and the track width is less than 40mm, so that you can install the C-shape brackets properly.

## Introduction



## Indicator Status Description

Status	Description
LED indicator flashes green slowly	Zigbee pairing mode
LED indicator keeps green	Remote controller pairing mode
LED indicator flashes green quickly	Remote controller cleared

## Features

SONOFF ZBCurtain is a Zigbee smart curtain motor, which allows you to remote control, local control, voice control and manually open/pause your curtains. You can also open or close the curtains to percentage, set smart scenes, timers and etc. to make your curtains more automatic.

- Remote Control



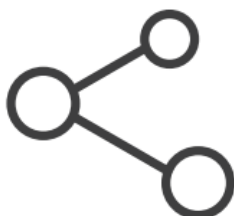
- Timing Schedule



- Voice Control



- Share Control



- Smart Scene



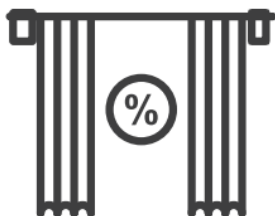
- Manual Open/Pause



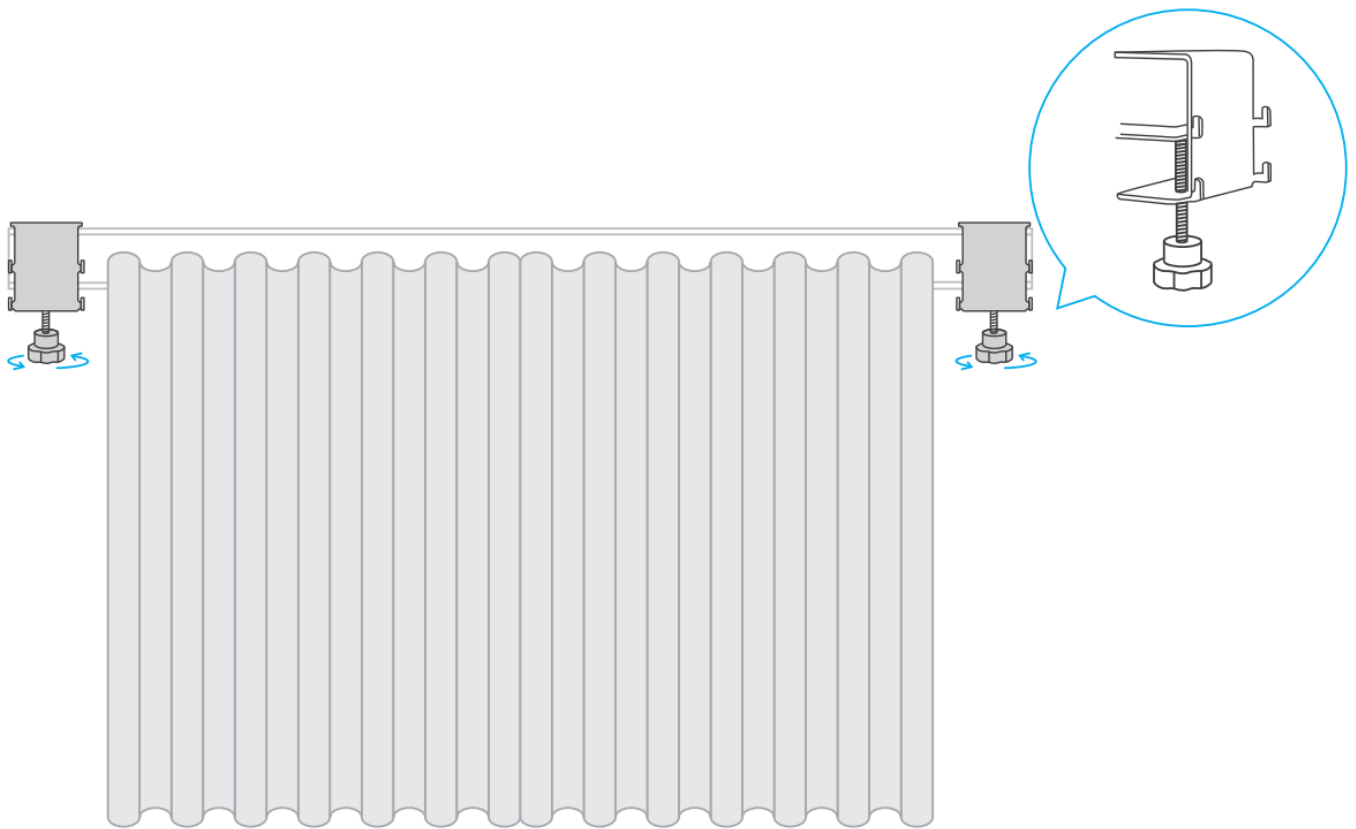
- Local Control



- Custom Opening /Closing Position

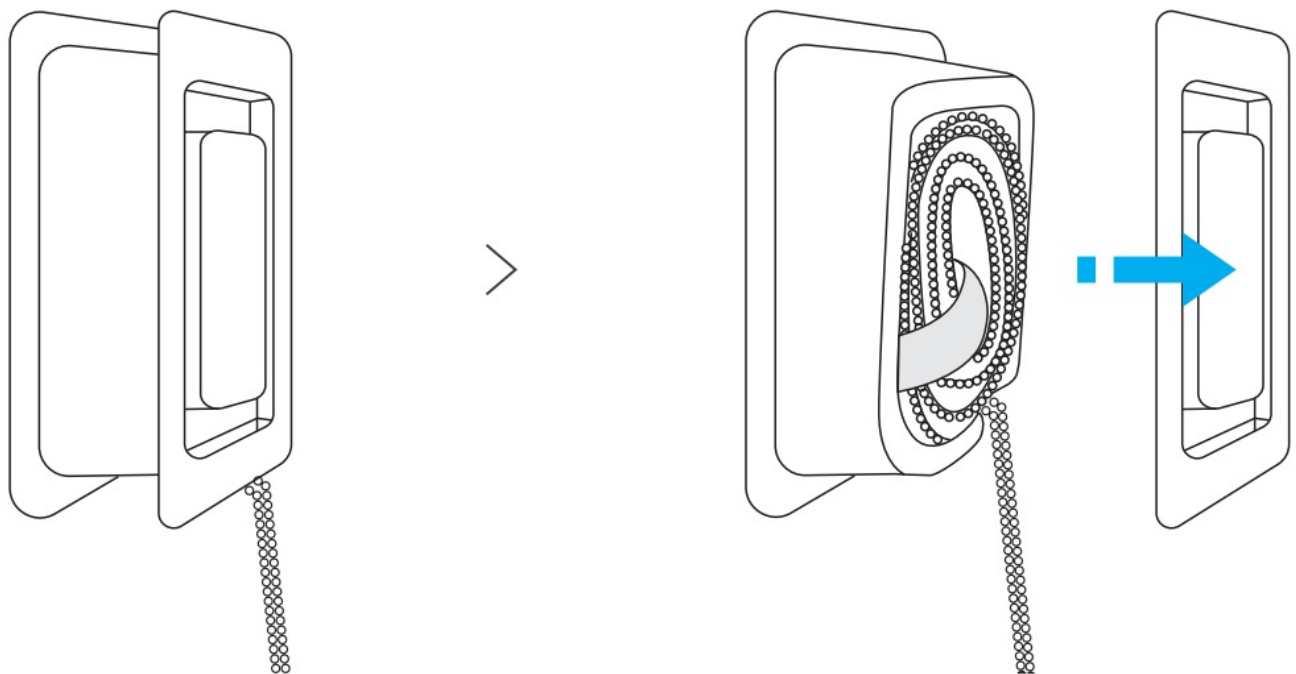


**Install the C-shape brackets**

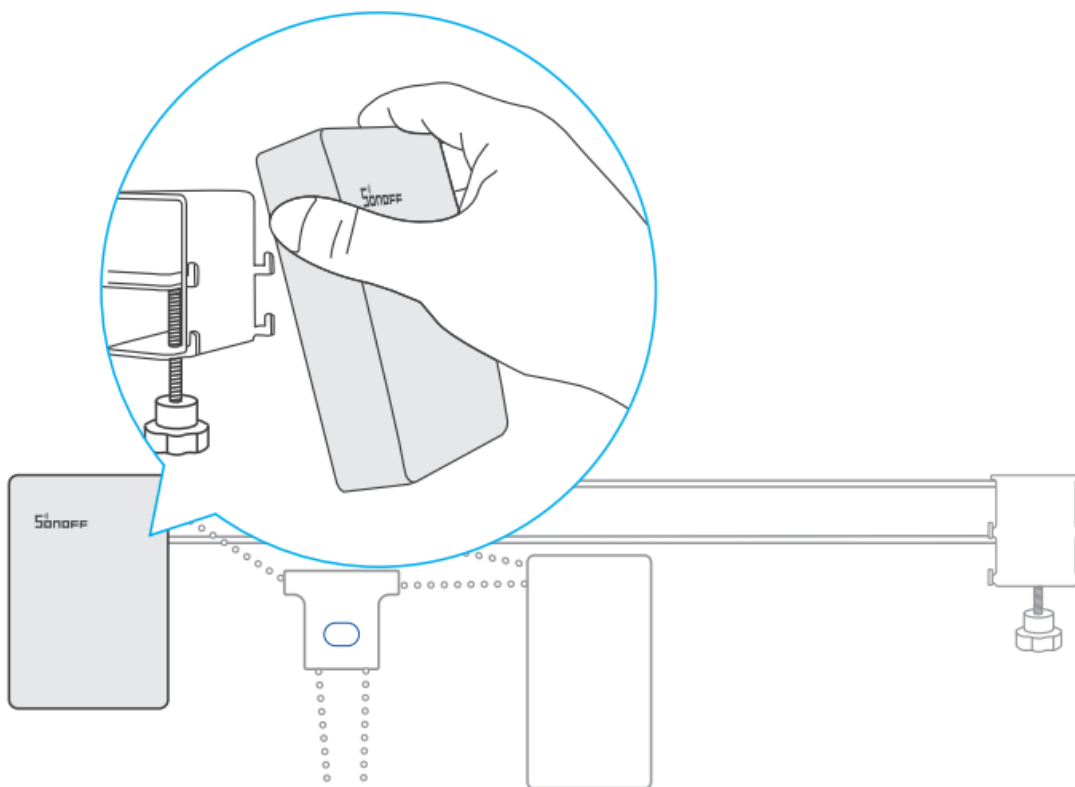


## Install the curtain motors

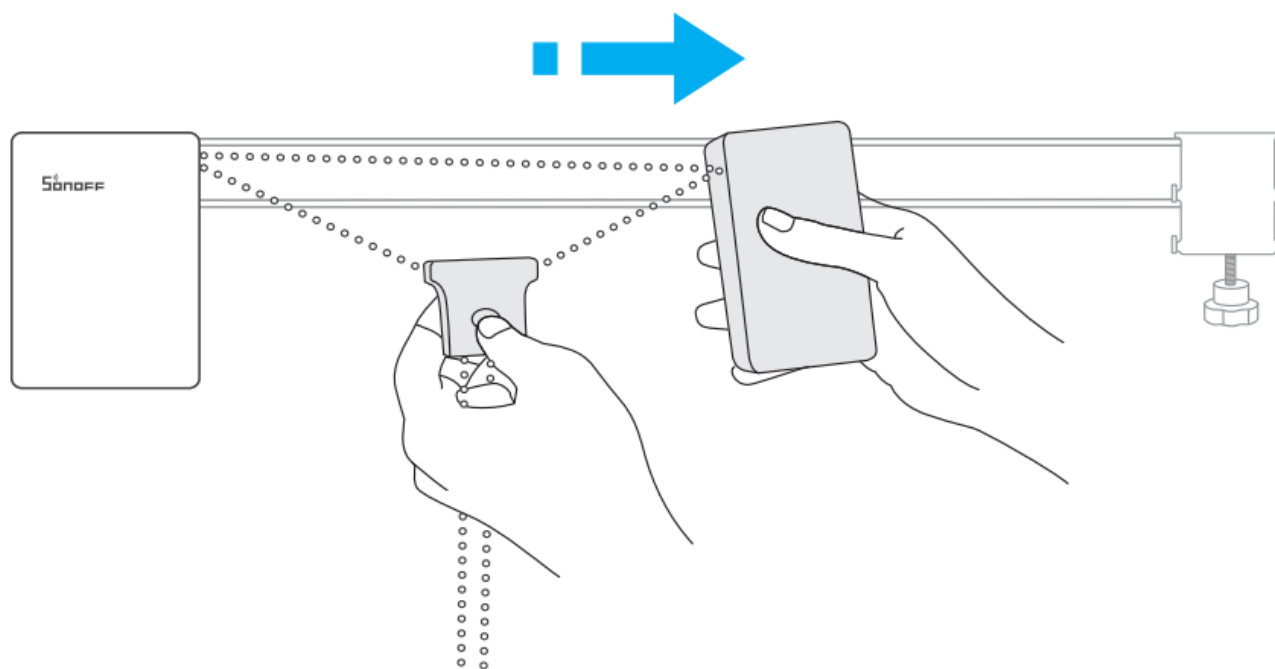
1. Remove the cover of the reel, then take out the drive-chain.



2. Mount the main-motor on the left C-shape bracket and fasten it downwards.

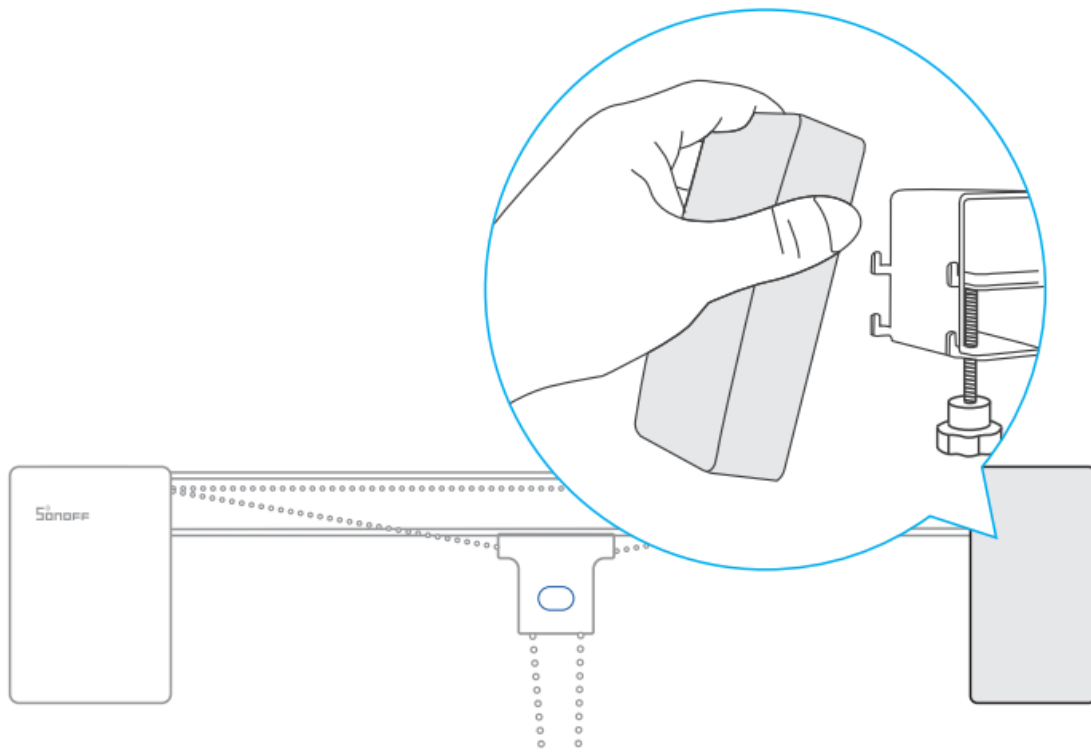


3. Hold the vice-motor and press the button on the clamp(R), then gradually extend the drive-chain to the right to the C-shape bracket position.

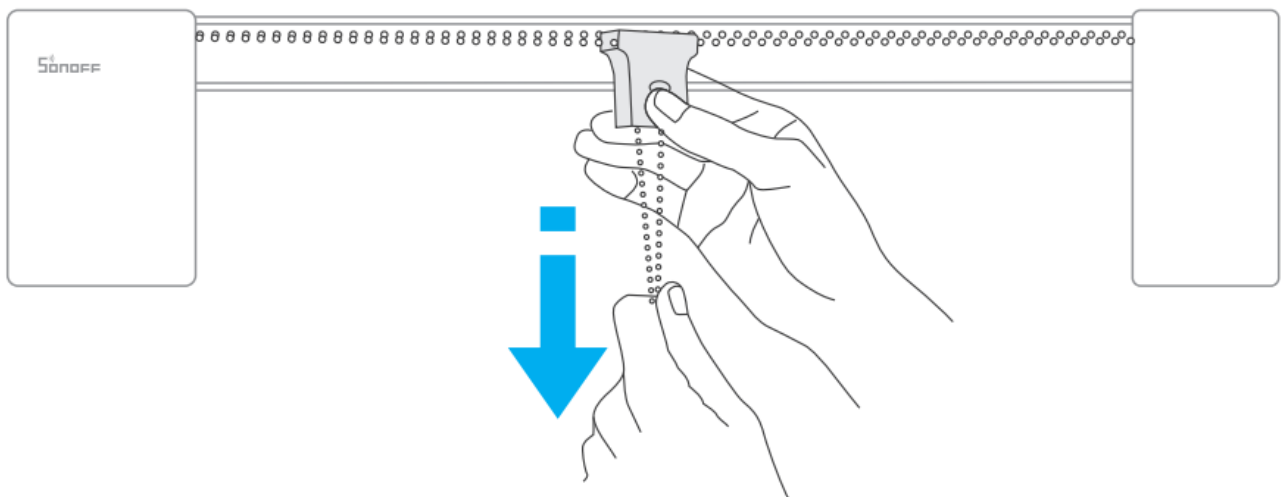


The tied part can be disassembled and used if the drive-chain is not long enough.

4. Mount the vice-motor on the right C-shape bracket and fasten it downwards.



5. Press and hold the button on the clamp(R) while pulling down the chain tightly.



## Mount the curtain clamps

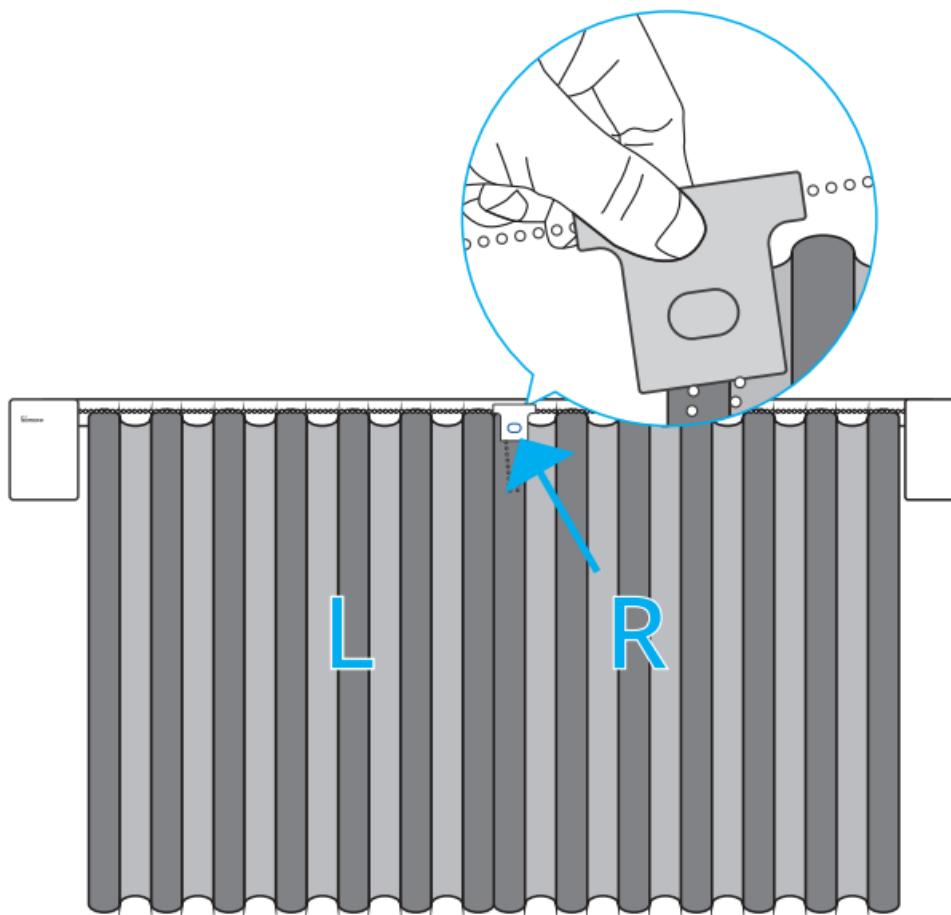


Close the curtains before mounting the curtain clamps.

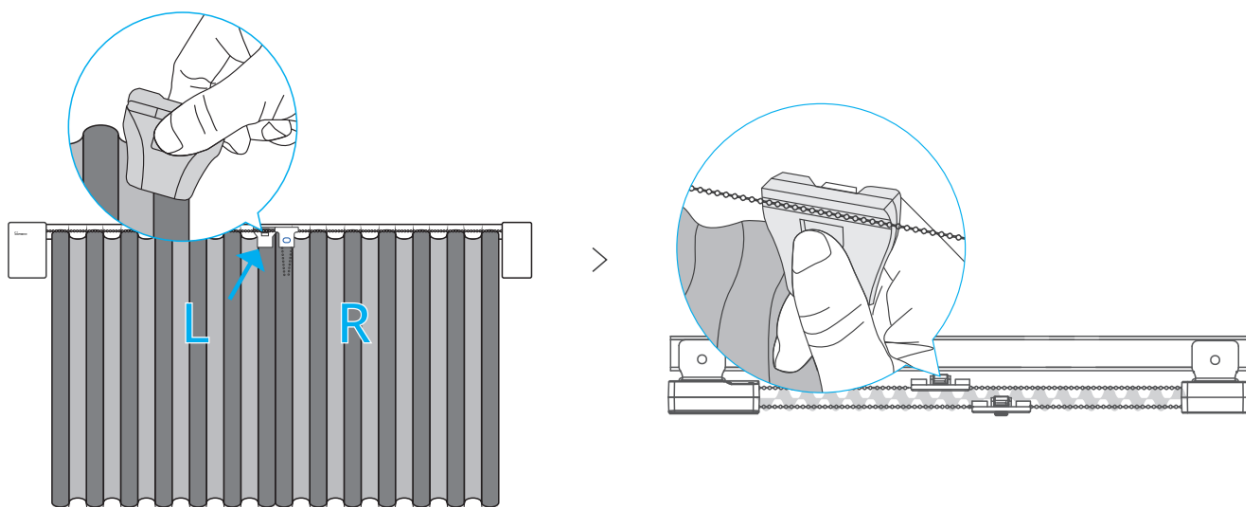
### 1. Double-side opening curtain

1. Clip the clamp(R) on the right curtain.



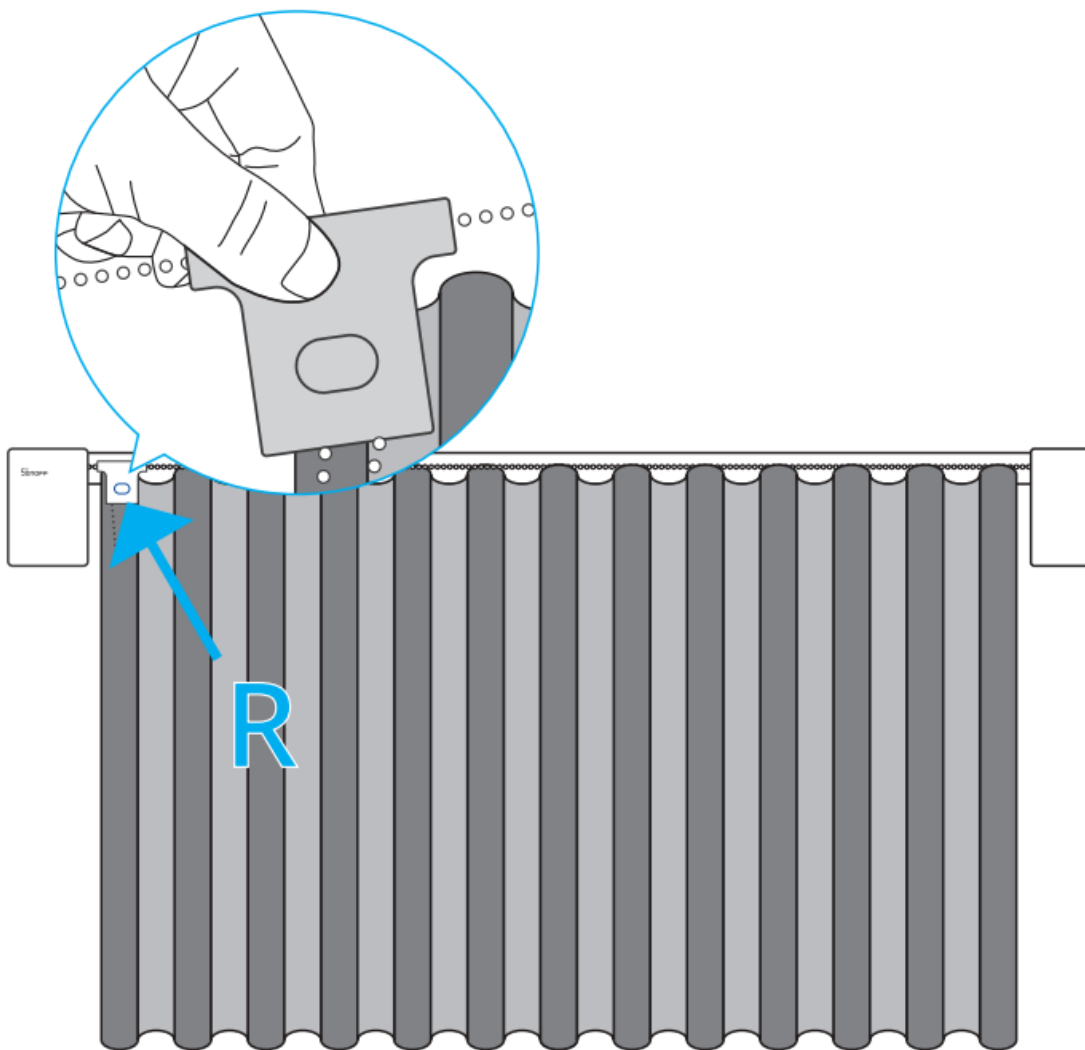


2. Clip the clamp(L) on the left curtain, and mount the clamp(L) on the inner curtain drive-chain.



## 2. Single-side opening curtain

Clip the clamp(R) on the opening side of the curtain (The clamp L is not required).



## Pair with eWeLink App

### 1. Download the eWeLink App

Please download the “eWeLink” App from Google Play Store or Apple App Store.

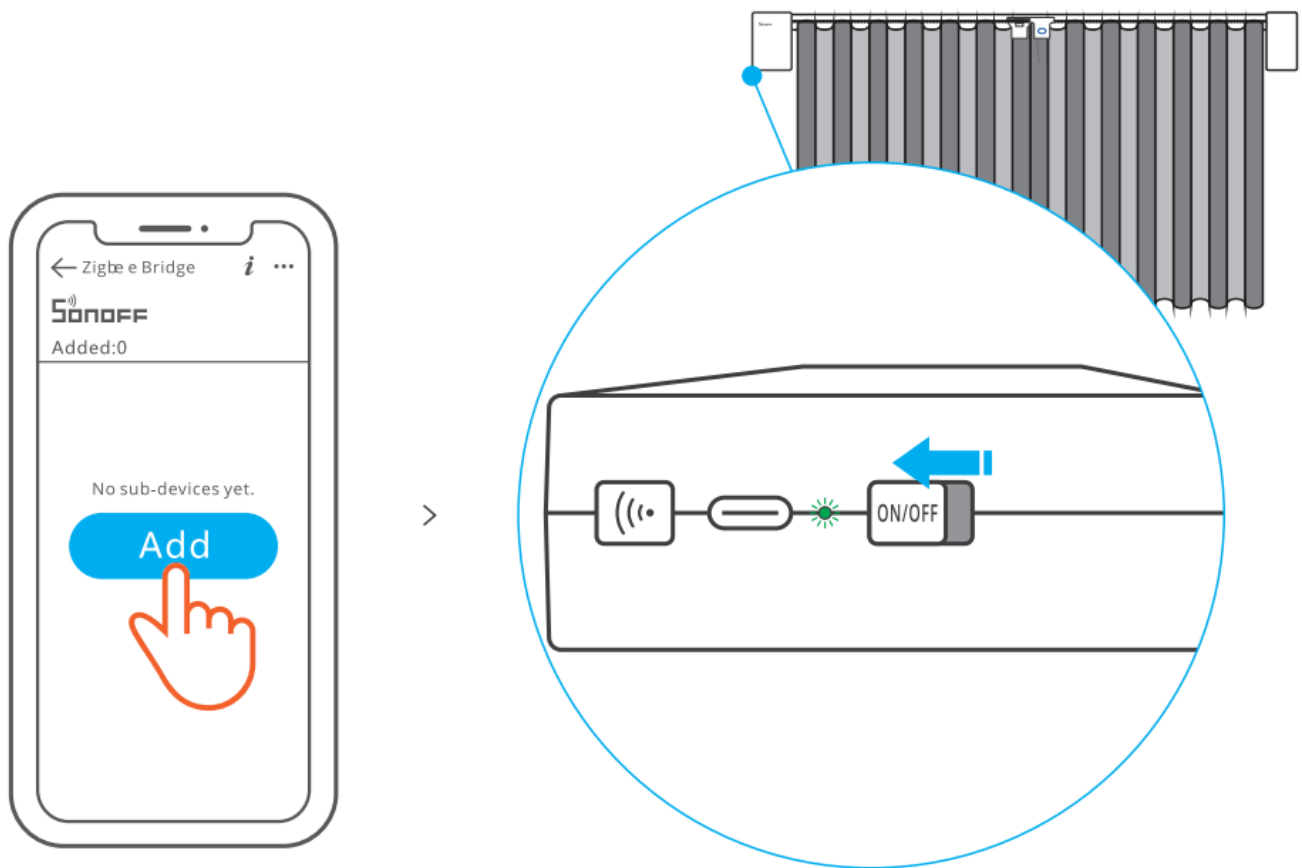


### 2. Add SONOFF Zigbee Bridge to your eWeLink account

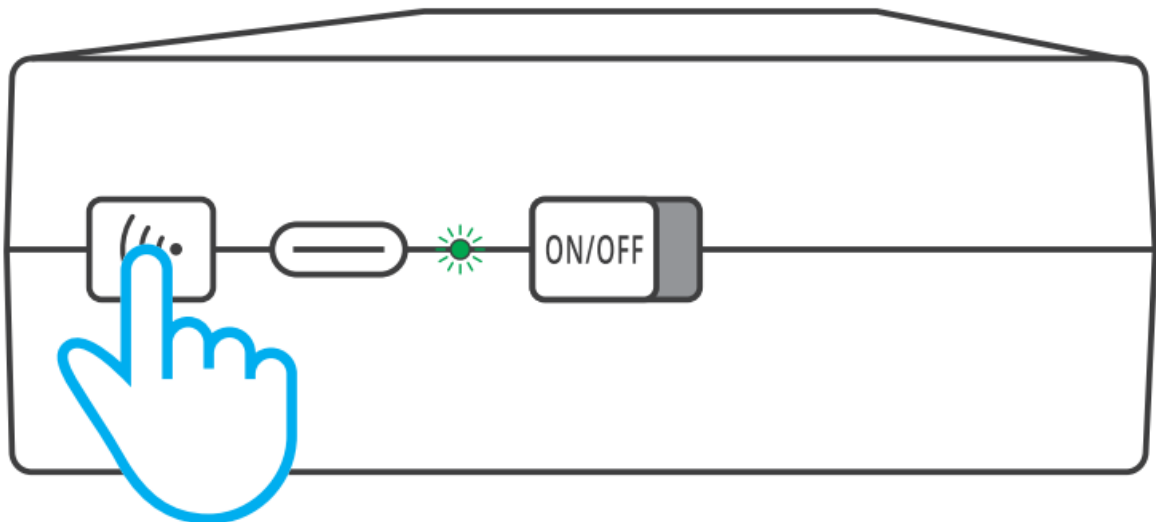


Make sure the proper versions of Zigbee gateway: ZBBridge-P V1.1.0 and later, ZBBridge V1.6.0 and later

### 3. Add curtain motor to Zigbee Bridge



Open the eWeLink App, select the gateway you want to pair and tap the “Add” icon, then power on the curtain motor. After powering on, LED indicator will “flash green slowly”, now the device is in pairing mode and waiting for been added. The LED indicator on the device will keep on for 3s when adding the device successfully.



The device will exit the pairing mode when it doesn't be paired successfully within 30s. If you want to enter the pairing mode again, press and hold the pairing button for 5s until the LED indicator “flashes green slowly” and then release.

#### 4. Effective Communication Distance Verification

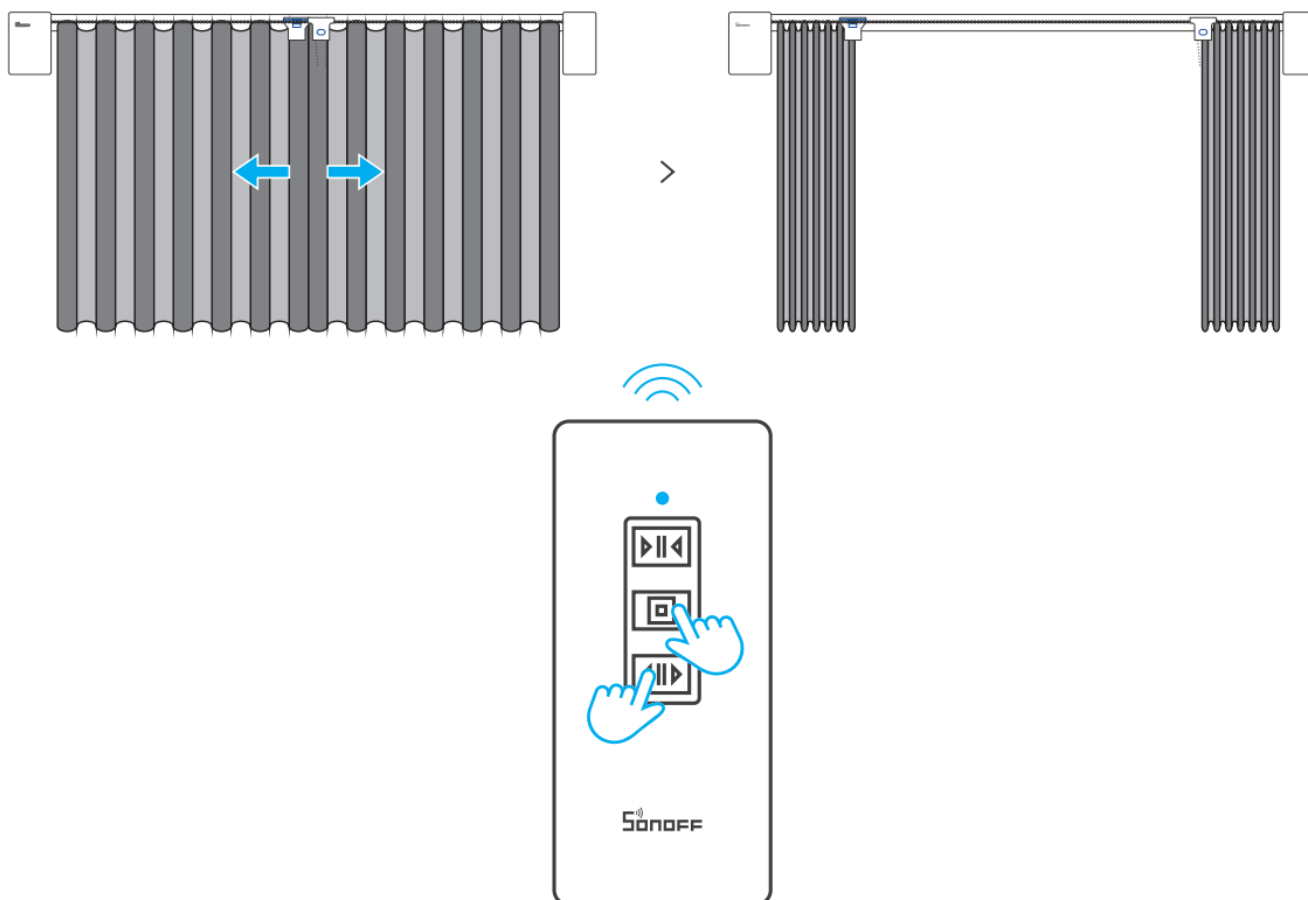
Install the device in the desired place, then press the Pairing button on the device. The LED indicator flashes twice means the device and the device under the same Zigbee network (the router device or hub) are in the effective communication distance

### Set up the curtain opening and closing limit position



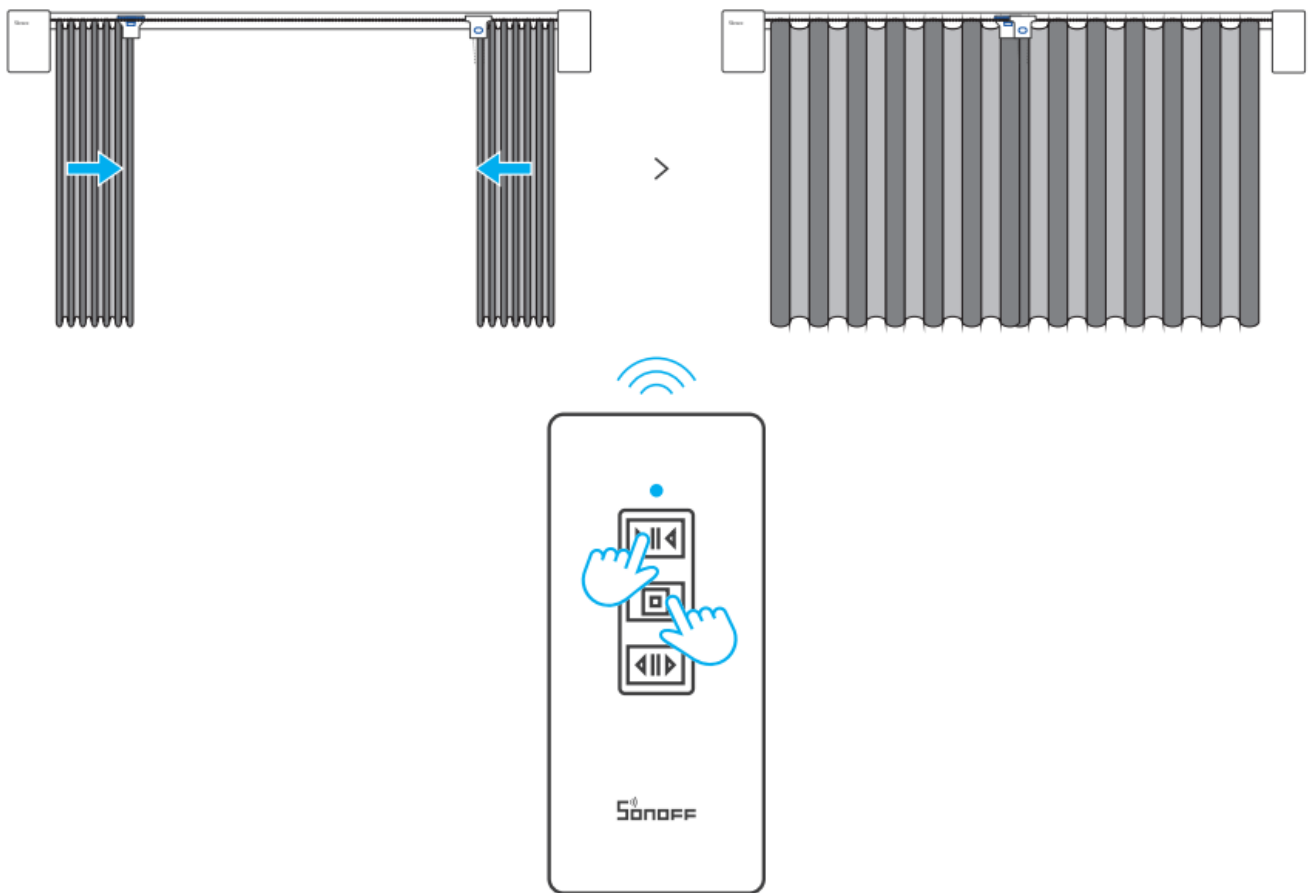
Please set up the opening limit position first and then set up the closing limit position (Otherwise it will affect the manual pause feature).

### 1. Curtain opening limit position setting:



Press and hold the “Open+Pause” buttons on the remote controller at the same time, and release the buttons when the curtain moves to the desired position that you want to open the curtain.

### 2. Curtain closing limit position setting:



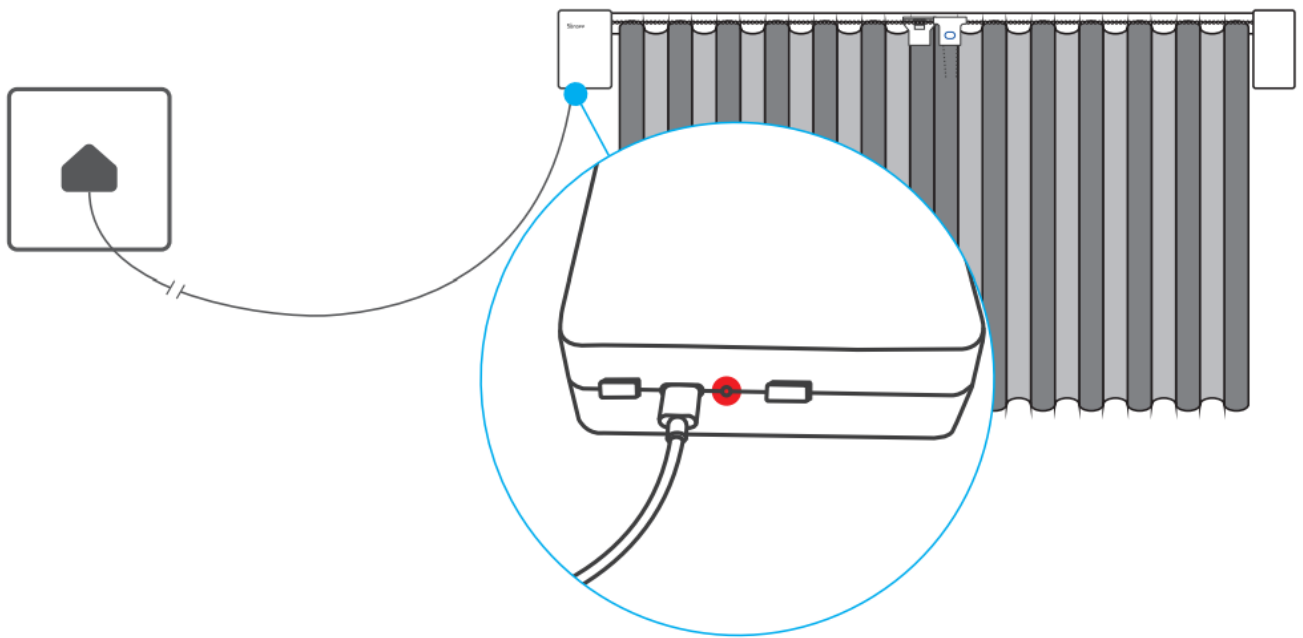
Press and hold the “Close + Pause” buttons on the remote controller at the same time, and release the buttons when the curtain moves to the desired position that you want to close the curtain.

⚠ If the curtain position changes while the device is powered off, please reset the limit position after the device powers on again.

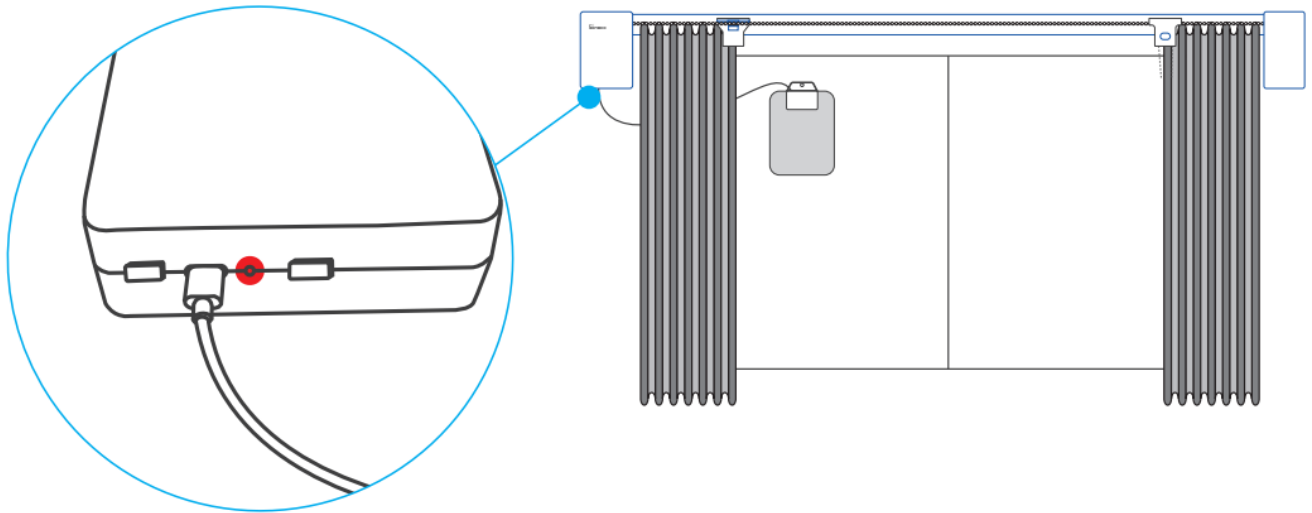
⚠ When the remote controller is paired with more than one curtain motor, please set the limit points one by one for each curtain motor and switch off the other curtain motors temporarily.

## Charge

1. Charged by USB Type-C and proper adapter



## 2. Charged by solar panel



When you using the solar panel to charge the curtain motor, please install the solar panel in a sunny spot.



The adapter and the solar panel are not included in the product, please purchase them separately.

## Pairing & Clearing of Curtain Remote and Curtain Motor

### Pairing

1. Power off the Curtain Motor, long press the pairing button and then power on the Curtain Motor to wait for about 5s until the LED indicator turns green and keeps on, then release. Now Curtain Motor has entered the Curtain Remote pairing state.
2. Press any button on the Curtain Remote within 10s, then LED indicator will turn off and the Curtain Motor will move forward and backward briefly once, now the pairing is successful between Curtain Motor and Curtain Remote.



If the Curtain Remote does not been paired within 10s, please follow the above steps and pair them again.

## Clearing

Power off the Curtain Motor, press and hold the pairing button, then power on the Curtain Motor, wait for about 10s until the LED indicator flashes green quickly and then release. Now all paired Curtain Remotes are cleared from ZBCurtain.

## Specifications

Model	ZBCurtain
Input	DC 5V 1A
Port Type	Type-C
Max. Power	5W
Battery Capacity	4000mAh
Battery Model	103450 103450 x 2 3.7V
Wireless Connection	Zigbee 3.0
Working Temperature	-5°C~40°C
Casing Material	ABS
Product Dimension	Main-motor: 115x78x29mm, Vice-motor: 115x58x28mm

## FCC Warning

Changes or modifications not expressly approved by the party responsible for compliance could avoid the user's authority to operate the equipment.

This device complies with part 15 of the FCC Rules. Operation is subject to the following two conditions: (1) This device may not cause harmful interference, and (2) this device must accept any interference received, including interference that may cause undesired operation.

### FCC Radiation Exposure Statement:

This equipment complies with FCC radiation exposure limits set forth for an uncontrolled environment. This transmitter must not be co-located or operating in conjunction with any other antenna or transmitter.

### Note:

This equipment has been tested and found to comply with the limits for a Class B digital device, pursuant to part 15 of the FCC Rules. These limits are designed to provide reasonable protection against harmful interference in a residential installation. This equipment generates, uses and can radiate radio frequency energy and, if not installed and used in accordance with the instructions, may cause harmful interference to radio communications. However, there is no guarantee that interference will not occur in a particular installation. If this equipment does cause harmful interference to radio or television reception, which can be determined by turning the equipment off and on, the user is encouraged to try to correct the interference by one or more of the following measures:

- Reorient or relocate the receiving antenna.
- Increase the separation between the equipment and receiver.

- Connect the equipment into an outlet on a circuit different from that to which the receiver is connected.
- Consult the dealer or an experienced radio/TV technician for help.

Hereby, Shenzhen Sonoff Technologies Co., Ltd. declares that the radio equipment type ZBCurtain is in compliance with Directive 2014/53/EU. The full text of the EU declaration of conformity is available at the following internet address: <https://sonoff.tech/usermanuals>

**Operation frequency Range:** 2405-2480MHz(Zigbee)

**RF Output Power:** 3.68dBm(Zigbee)

## Customer Support

**Shenzhen Son off Technologies Co., Ltd.**

3F & 6F, Bldg A, No. 663, Bulong Rd, Shenzhen, Guangdong, China

ZIP code: 518000 **Website:** [sonoff.tech](https://sonoff.tech)


MADE IN CHINA



SONOFF



## Documents / Resources

 The image shows the cover of the SONOFF ZBCurtain User manual V1.0. It features the SONOFF logo at the top left, followed by 'ZBCurtain' and 'User manual V1.0'. Below this is a diagram of the Zigbee Smart Curtain Motor, which consists of two rectangular units connected by a vertical line. At the bottom, it says 'Zigbee Smart Curtain Motor'.	<p><a href="#">SONOFF V1.1 ZBCurtain Remote Controller</a> [pdf] User Manual</p> <p>V1.1 ZBCurtain Remote Controller, V1.1, ZBCurtain Remote Controller, Remote Controller, Controller</p>
--	--

## References

- [User Manual](#)

[Manuals+.](#) [Privacy Policy](#)

This website is an independent publication and is neither affiliated with nor endorsed by any of the trademark owners. The "Bluetooth®" word mark and logos are registered trademarks owned by Bluetooth SIG, Inc. The "Wi-Fi®" word mark and logos are registered trademarks owned by the Wi-Fi Alliance. Any use of these marks on this website does not imply any affiliation with or endorsement.