



# SONOFF TRVZB V1.1 Thermostatic Valve for Smart Zigbee Radiator User Manual

[Home](#) » [SonOFF](#) » SONOFF TRVZB V1.1 Thermostatic Valve for Smart Zigbee Radiator User Manual 

## Contents

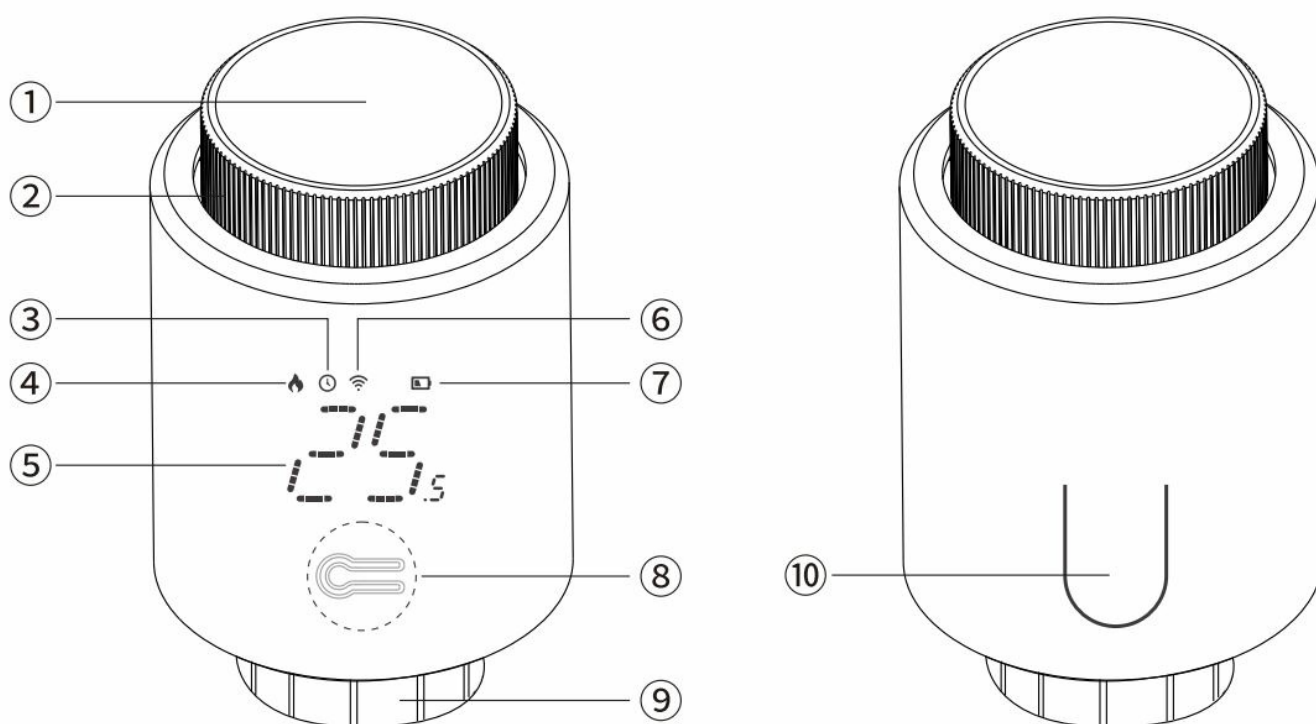
- [1 SONOFF TRVZB V1.1 Thermostatic Valve for Smart Zigbee Radiator](#)
- [2 Product introduction](#)
- [3 Screen display and introduction](#)
- [4 Features](#)
- [5 Pairing process](#)
- [6 Device debugging](#)
- [7 Temperature control mode](#)
- [8 Screen display rotation](#)
- [9 Specifications](#)
- [10 Error codes, problems and solutions](#)
- [11 Factory reset](#)
- [12 EU Declaration of Conformity](#)
- [13 Documents / Resources](#)
- [14 Related Posts](#)



**SONOFF TRVZB V1.1 Thermostatic Valve for Smart Zigbee Radiator**





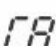
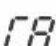



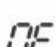

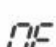

## Product introduction



1. Middle button
2. Rotary knob

3. Auto
4. Heating
5. Target temperature
6. Internet connection
7. Low battery
8. Configuration key (under the dismountable shell
9. Heating valve interface
10. Battery case latch

## Screen display and introduction

Screen display	Introduction
	<p><b>Window opening detection function</b></p> <p>The device will automatically identify whether the window is opened after you enter the app interface to enable the window opening detection function. When cold air is detected and the temperature drops more than 1.5 °C within 4.5 minutes, the window opening function will be enabled. Alongside the enabling of the function, the screen displays "  " and the temperature is set at 12 °C.</p> <p>Note: After the window opening function is enabled, the following operations will disable the window opening function:</p> <ol style="list-style-type: none"> <li>1. Temperature setting operation on App or device.</li> <li>2. Temperature rises by more than 1.5°C within 4.5 minutes.</li> <li>3. No operation on App or device within 30 minutes.</li> </ol>
	<p><b>Anti-calcification function</b></p> <p>The temperature control valve will perform a routine calcium removal operation at 12:00 am every Monday to prevent calcification of the valve. During the operation, the screen will display "  ".</p>
	<p><b>Child lock function</b></p> <p>Press "Middle button" for 3 seconds, then the screen will display "  ", with child lock enabled. After the screen is locked, press "Middle button" for 3 seconds, then the "  " on the screen will disappear, with child lock disabled.</p>
	<p>When heating is not needed in winter, turn knob counterclockwise (  ) to the "  " icon, then the device valve is closed and the antifreeze function is enabled.</p> <p>Note: After the antifreeze function is enabled when the room temperature is below 5 °C, the function will be enabled to prevent the radiator from being damaged by freezing. The function will be disabled when the room temperature exceeds 7 °C.</p>
	<p>Low battery (Battery needs to be replaced with a new one within 1 week)</p>

## Features

- With the SON-Off Thermostatic Radiator Valve, you can control and reach the temperature you want more accurately. It allows remote control and timing.
- The window opening detection function helps you save energy and avoid additional energy waste.
- The matching adapters can be installed on almost any valve.



Remote Control



Smart Timing



Precise Temperature Control



Historical Data Record



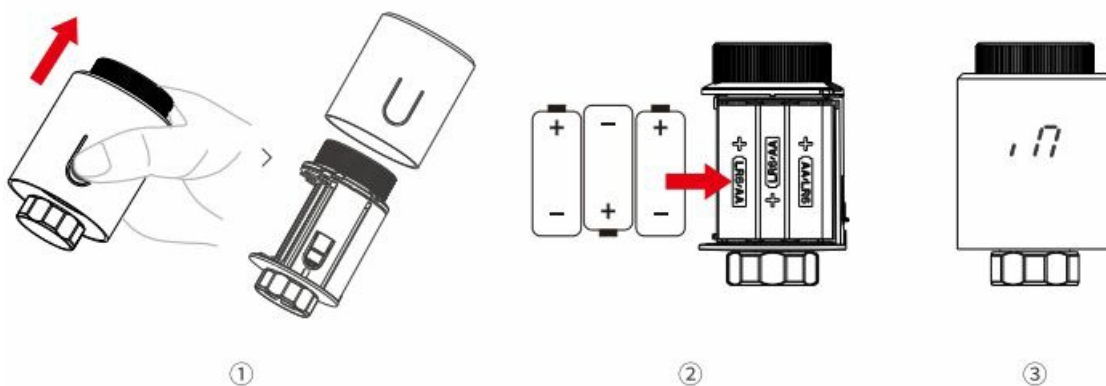
Child Safety Lock



Open Window Detection

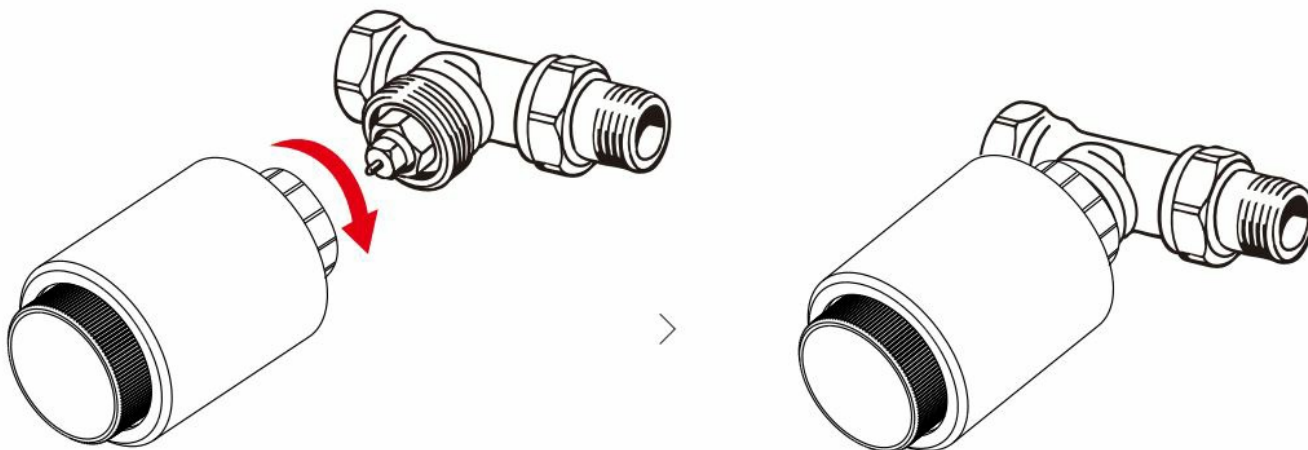
## Pairing process

### Power on the device



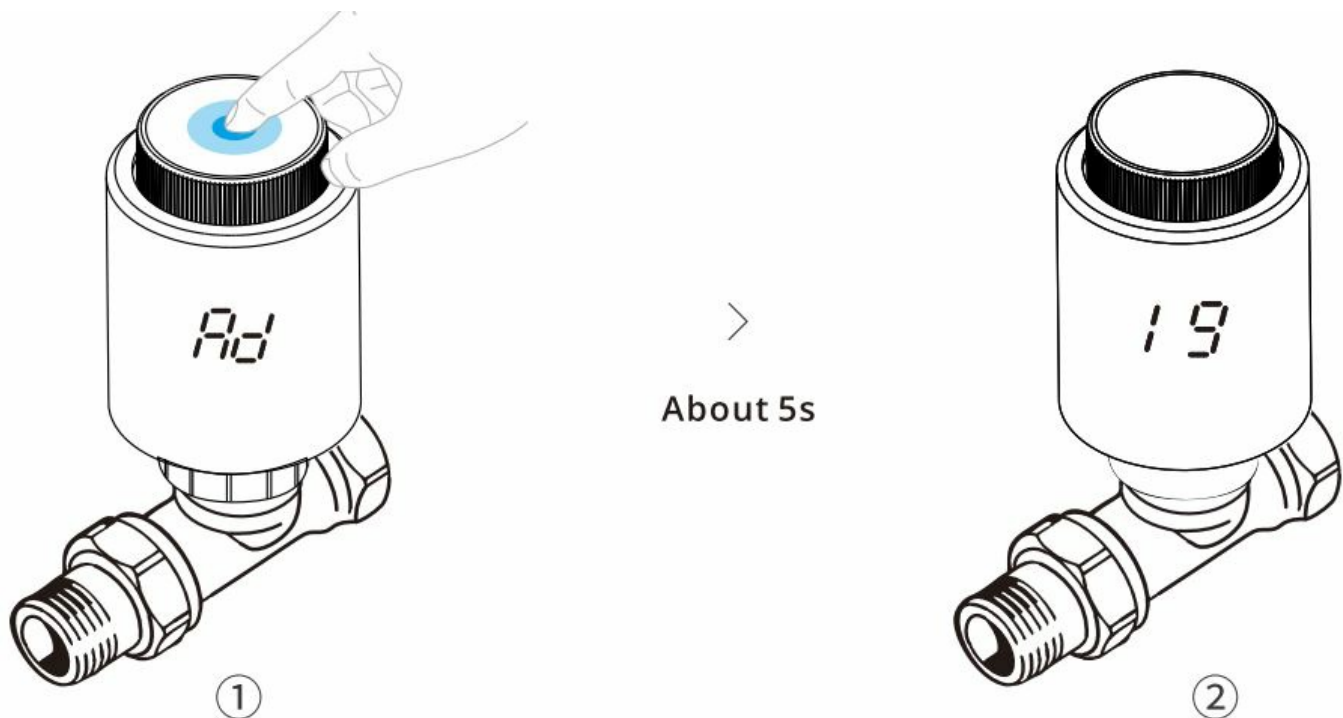
1. Press the battery compartment latch while taking out the shell.
2. Load the battery.
3. After powering on, the screen displays '17' and flashes.

### Device installation



- When '17' stops flashing, install the device to the valve interface.
- If the screen displays "FS" or "Pd", press the middle button and '17' will display again.

## Device debugging

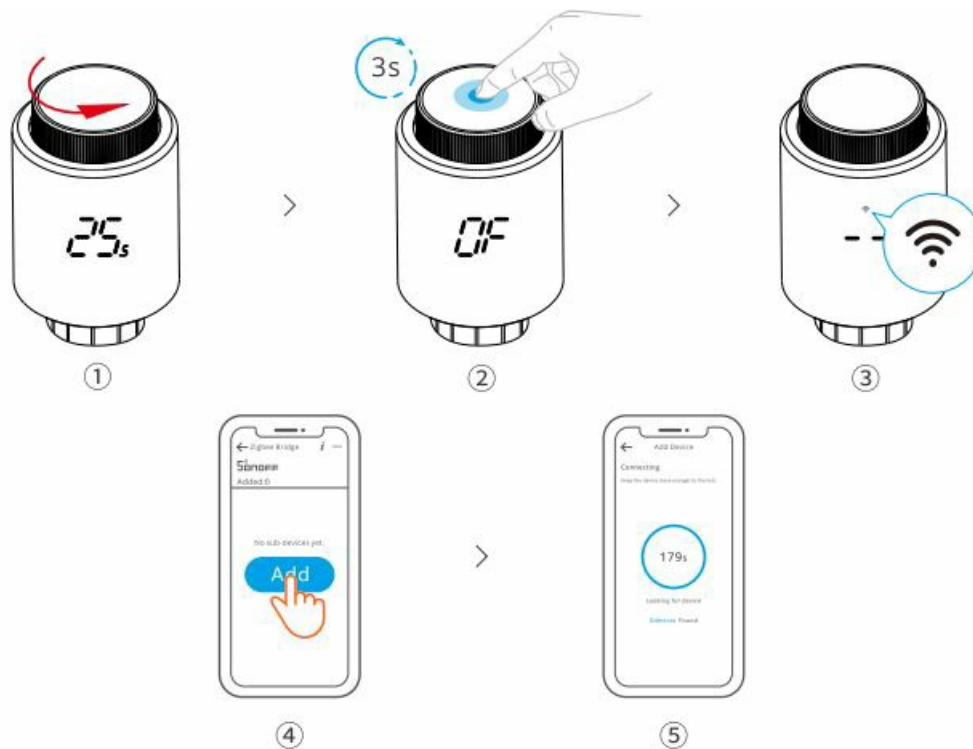


- Short press the middle button, and *Ad* will flash (Figure 1)). Wait for abouts seconds, and the device will display the initialization interface (Figure 2), which means that debugging is completed.

### Download the eWelink App & Add SONOFF Zigbee gateway.

- The device can work with other gateways supporting Zigbee 3.0 wireless protocol.
- Detailed information is in accordance with the final product.

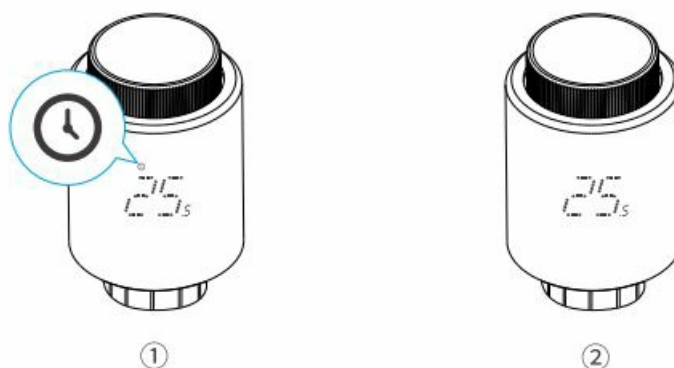
### Add the device to Zigbee gateway



- In manual mode, turn the knob counterclockwise. When the screen displays” **OF**”, press and hold the middle button for 3 seconds and the screen icon flashes. Now the device enters Pairing mode, then open the App and add the device in the gateway homepage.
- If the device fails to pair with the gateway within 3 minutes after it enters Pairing mode, the device will exit the pairing status.
- If you want to pair again, please press and hold the middle button for 3 seconds until the icon ” **OF** “flashes when the screen shows

## Temperature control mode


- The device supports auto mode and manual mode. Shortly press “Middle button” to switch between the two modes.



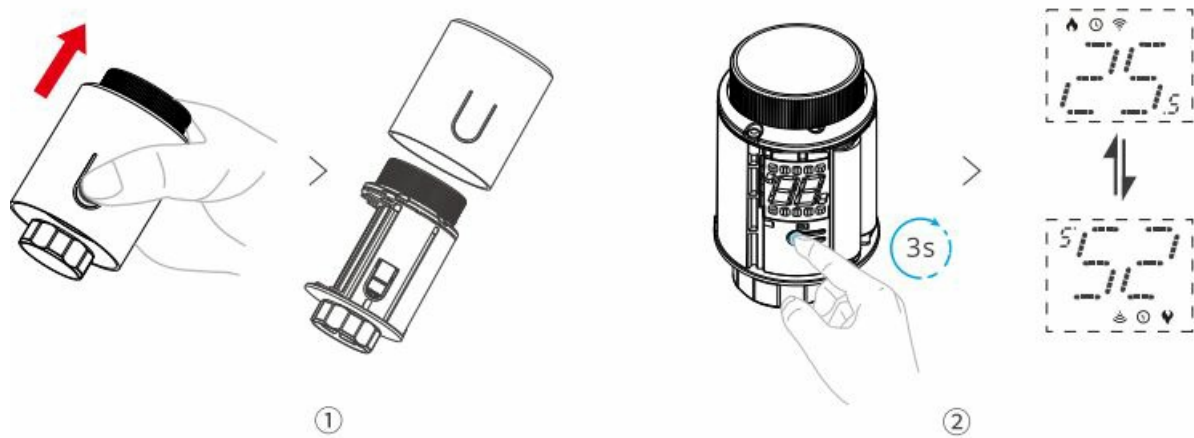
### Auto mode:

- When is display ed on screen, it means the auto mode is on (Picture G)),

### Manual mode:

- When  disappears on screen, it means the manual mode is on (Picture@).
- Device pairing operation must be done in manual mode.

## Screen display rotation



1. Dismount the shell,
2. Press "Configuration key" for 3 seconds to change the screen display direction.

## Specifications

Model	TRVZB
Input	4.5V=(3×1.5V AA Batteries)
Battery model	1.5V LR6 Alkaline AA Battery
Wireless connection	Zigbee 3.0
Threaded connection	M30x1.5mm
Temperature setting range	4°C-35°C
Working temperature	-10°C~50°C
Working humidity	5%-95% RH Non-condensing
Color	White
Casing material	PC
Product dimension	59.4×59.4×95mm
Disconnection means	Type 1 B
Pullution degree	2
Rated impulse voltage	500V

## Error codes, problems and solutions



Error code	Problem	Solution
<i>F0</i>	Abnormal temperature sensor	Contact aftersales staff
<i>F1</i>	Slow valve operation	Check installation status and heating valve
<i>F2</i>	Excessively wide adjustment range	Check whether temperature controller is fastened
<i>F3</i>	Excessively small adjustment range	Check heating valve
<i>F4</i>	Battery runs out	Replace battery
<i>F5</i>	No valve detected	Check whether valve is installed

## Factory reset



- Press “Middle button” for a longer time and at the same time put batteries in, then the screen displays *FR* and blinks for 3 seconds.
- After that, the device is reset to factory settings and is automatically restarted.
- All previous settings will be removed after the device is reset to factory settings.

## CAUTION

- RISK OF EXPLOSION IF BATTERY IS REPLACED BY AN INCORRECT TYPE.
- DISPOSE OF USED BATTERIES ACCORDING TO THE INSTRUCTIONS
- Do not short-circuit batteries.
- Do not use new and old batteries together.
- Do not use batteries of different types/manufacturers together.
- Do not use batteries in reverse polarity
- A battery which is leaking or has leaked before is not fit for use and should be thrown away. Place the batteries into a plastic bag, without touching the batteries, put on gloves and an apron and, then put it into a recycling box at an electrical store.
- When the battery which is leaking or has leaked before, in some cases, the circuit board of your device may be damaged and will no longer work. In that cases, you should take your device to a Recupel collection point and the battery to a Be bat collection point.



## SAR Warning

- Under normal use of condition, this equipment should be kept a separation distance of at least 20 cm between the antenna and the body of the user.

## WEEE Disposal and Recycling Information

- All products bearing this symbol are waste electrical and electronic equipment (WEEE as in directive 2012/19/EU) which should not be mixed with unsorted household waste. Instead, you should protect human health and the environment by handing over your waste equipment to a designated collection point for the recycling of waste electrical and electronic equipment, appointed by the government or local authorities. Correct disposal and recycling will help prevent potential negative consequences to the environment and human health. Please contact the installer or local authorities for more information about the location as well as terms and conditions of such collection points.

## For CE Frequency

- **Operation frequency Range:** RF Output Power:
- **Zigbee:** 2405-2480MHz **Zigbee:** 1 OdBm

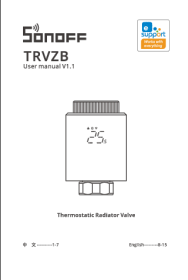
## EU Declaration of Conformity

- Hereby, Shenzhen Sonoff Technologies Co., Ltd. declares that the radio equipment type TRVZB is in compliance with Directive 2014/53/EU.
- The full text of the EU declaration of conformity is available at the following internet address: <https://son.off.tech/usermanuals>
- Shenzhen SonoffTechnologies Co., Ltd.
- 3F & 6F, Bldg A, No. 663, Bu long Rd, Shenzhen, Guangdong, China ZIP code: 518000 Service email: [support@itead.cc](mailto:support@itead.cc) Website: [sonoff.tech](http://sonoff.tech)
- Shenzhen Son off Technologies Co., Ltd.



- <https://sonoff.tech/product-review/tutorial/adapter-selection-guide/>

Documents / Resources

 The image shows the cover of the SONOFF TRVZB User manual V1.1. It features the SONOFF logo at the top left, a Zigbee logo at the top right, and a central illustration of the white thermostatic radiator valve. Below the illustration, the text 'Thermostatic Radiator Valve' is visible. At the bottom left, it says 'X ..... 1.7' and at the bottom right, 'English ..... 18-19'.	<p><a href="#">SONOFF TRVZB V1.1 Thermostatic Valve for Smart Zigbee Radiator</a> [pdf] User Manual TRVZB V1.1, TRVZB V1.1 Thermostatic Valve for Smart Zigbee Radiator, Thermostatic Valve f or Smart Zigbee Radiator, Valve for Smart Zigbee Radiator, Smart Zigbee Radiator, Zigbee Radiator, Radiator</p>
--	---