

SONOFF T2EU2C-TX Two Button Touch Wifi Wall Switch User Manual

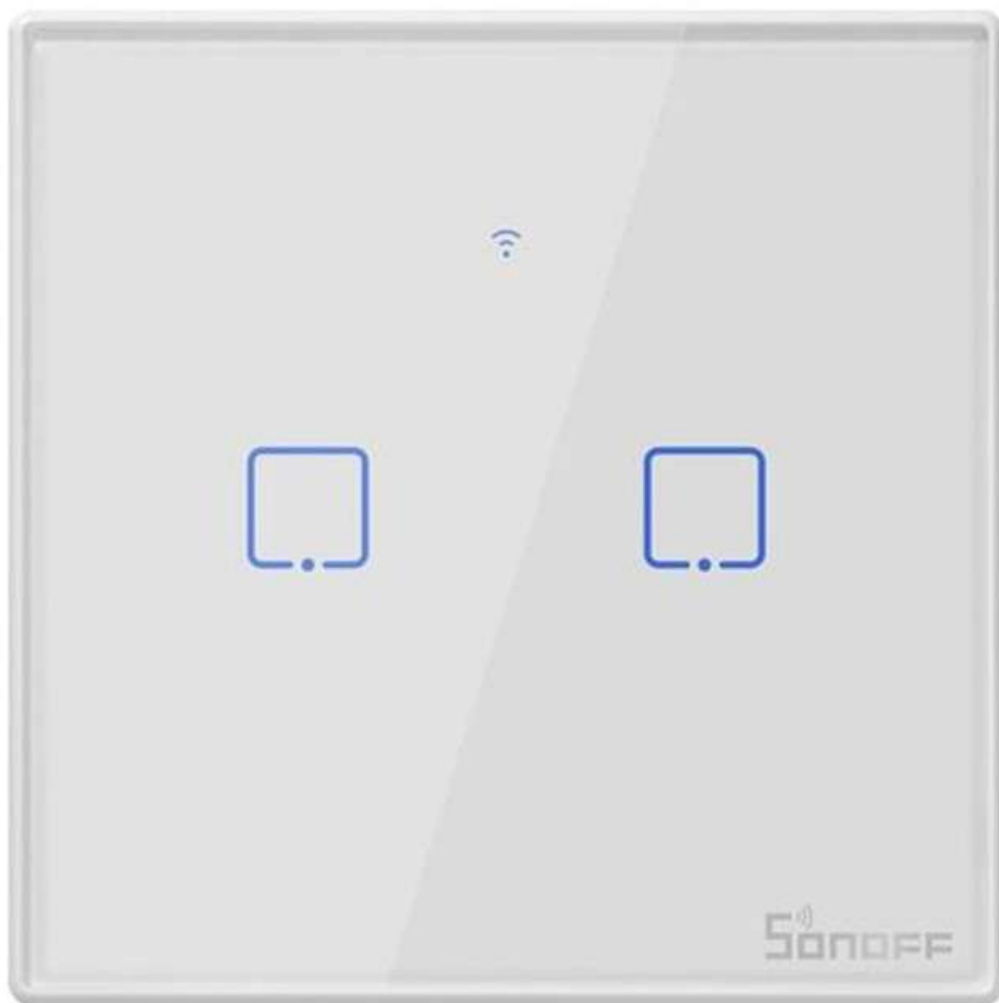
[Home](#) » [SonOFF](#) » SONOFF T2EU2C-TX Two Button Touch Wifi Wall Switch User Manual 

Contents

- [1 SONOFF T2EU2C-TX Two Button Touch Wifi Wall Switch](#)
- [2 Operating Instruction](#)
- [3 Specifications](#)
- [4 Product Introduction](#)
- [5 Common Problems](#)
- [6 Documents / Resources](#)
 - [6.1 References](#)

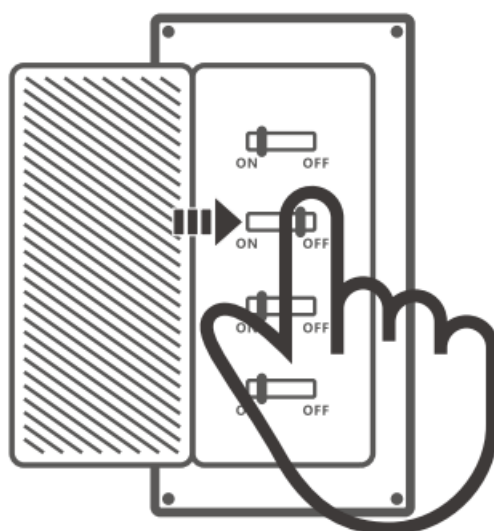


SONOFF T2EU2C-TX Two Button Touch Wifi Wall Switch



Operating Instruction

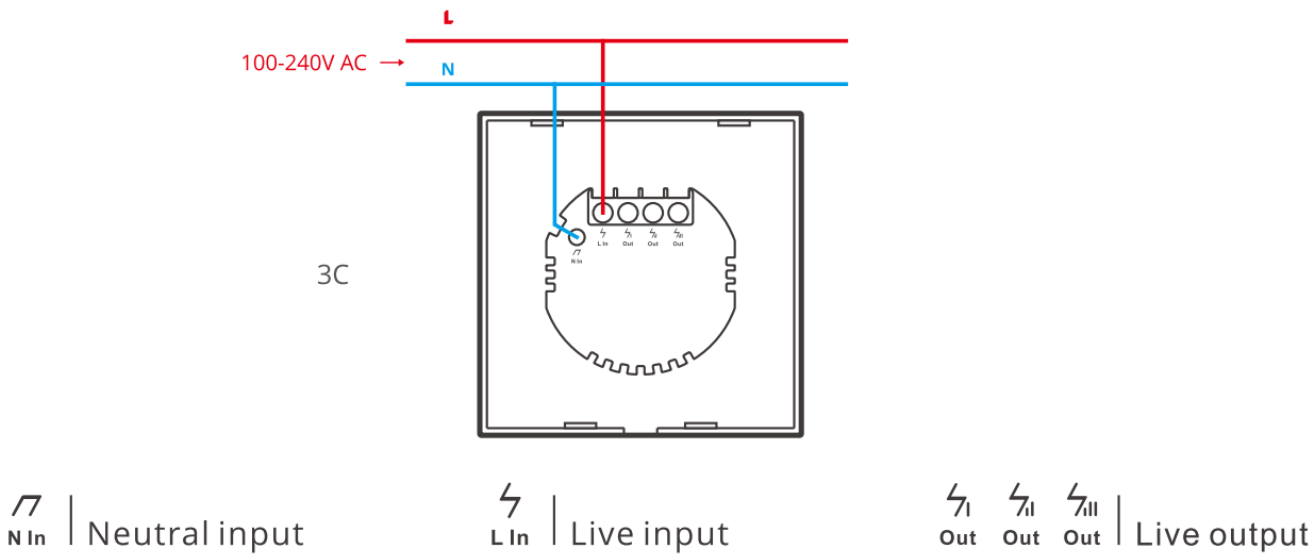
1. Power off



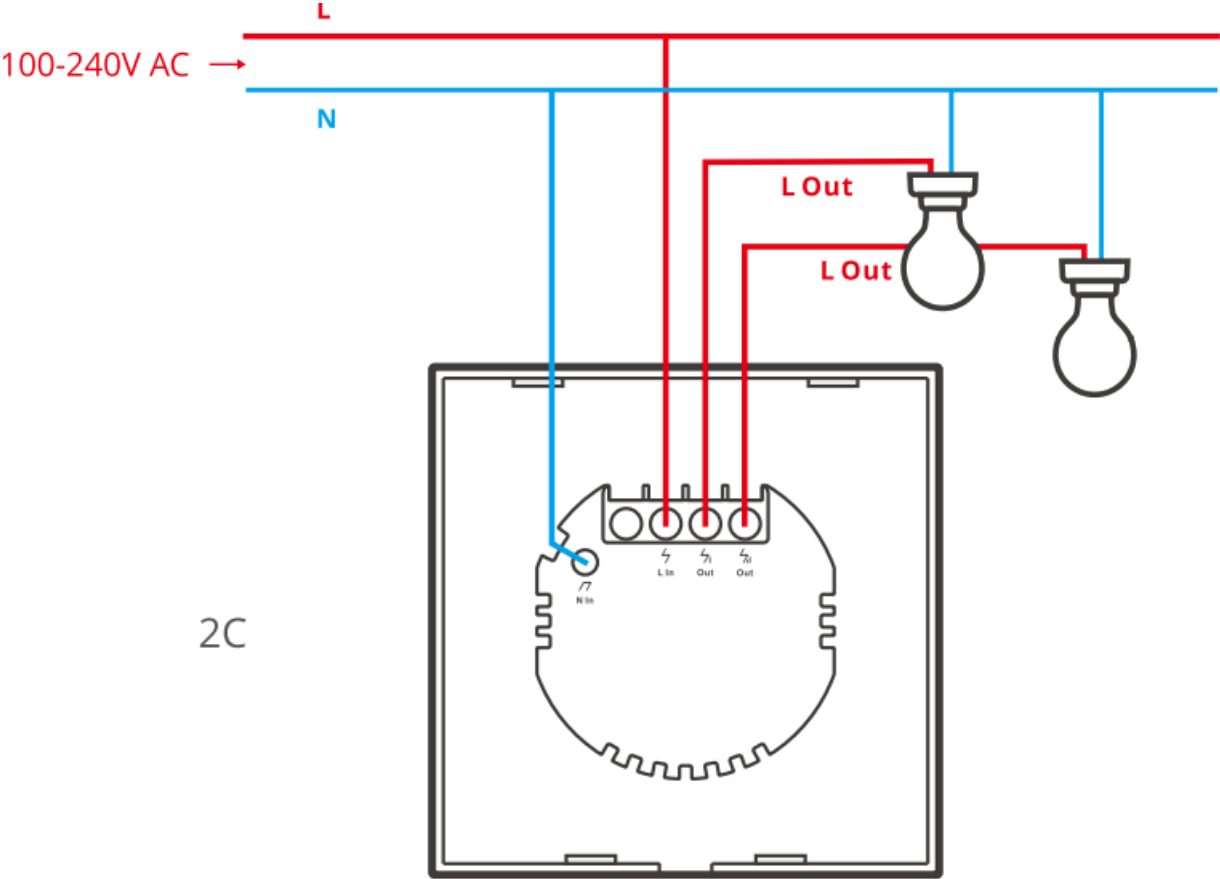
To avoid electric shocks, please consult the dealer or a qualified professional for help when installing and

repairing!

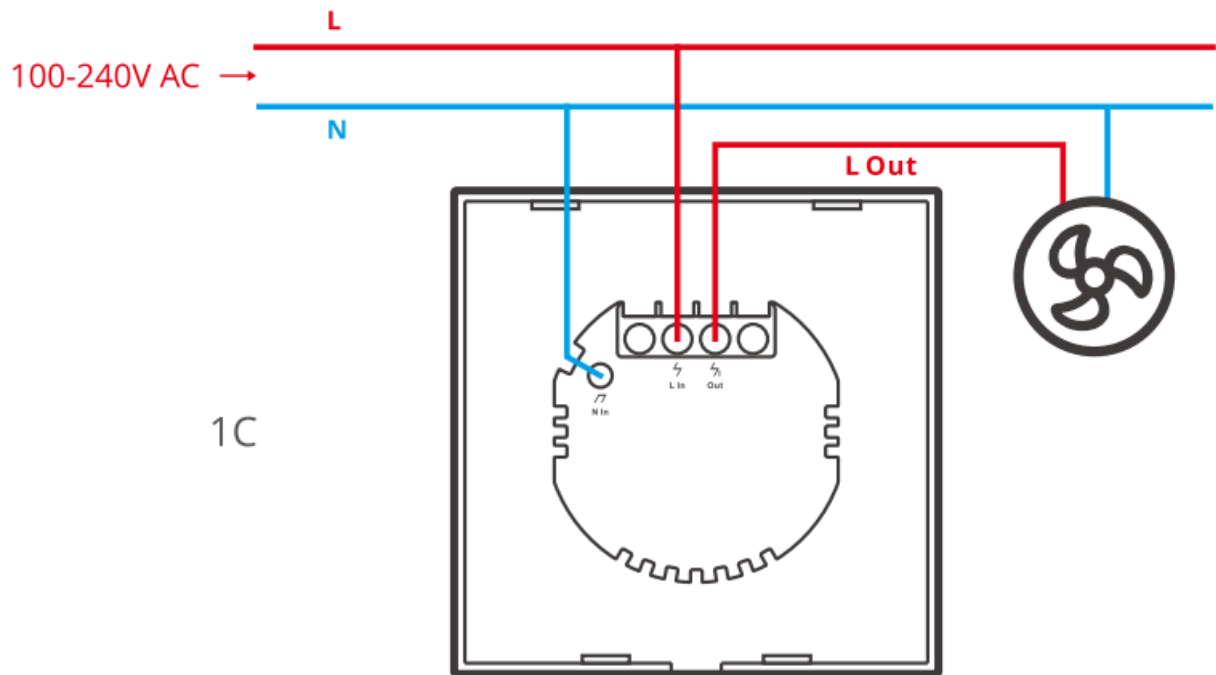
Wiring instruction



Light fixture wiring instruction



Appliance wiring instruction



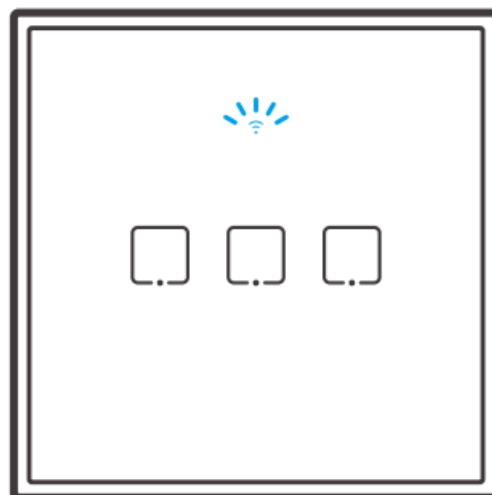
2. Make sure the neutral wire and live wire connection is correct.

3. Download APP



Android™ & iOS

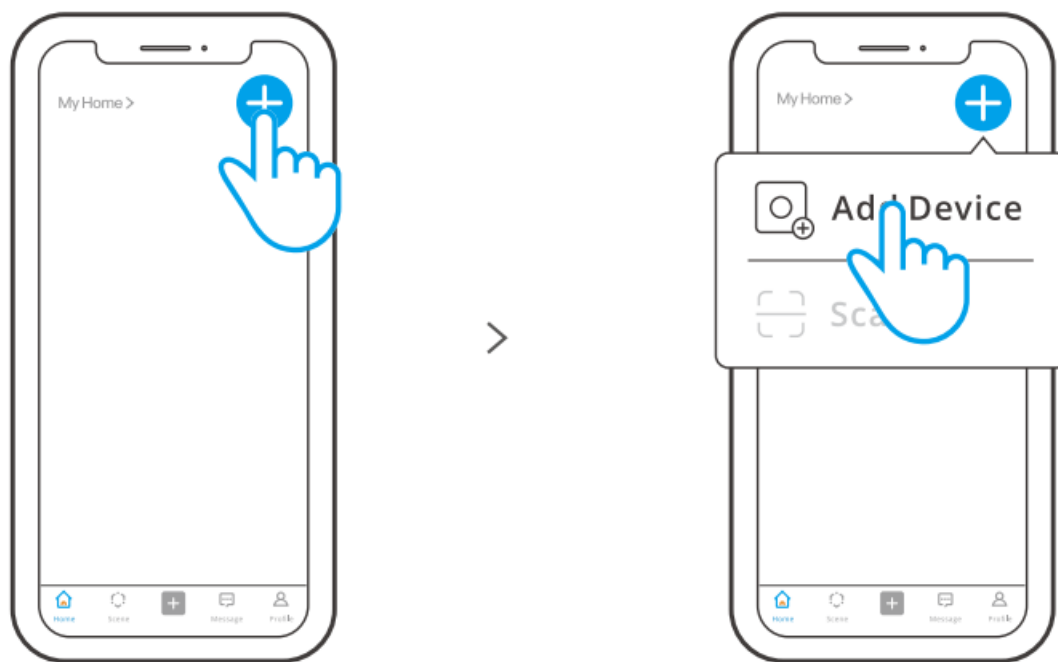
4. Power on



After powering on, the device will enter the quick pairing mode (Touch) during the first use. The Wi-Fi LED indicator changes in a cycle of two short and one long flash and release. • The device will exit the quick pairing mode (Touch) if not paired within 3mins. If you want to enter this mode, please long press any configuration

button for about 5s until the Wi-Fi LED indicator changes in a cycle of two short and one long flash and release.

5. Add the device

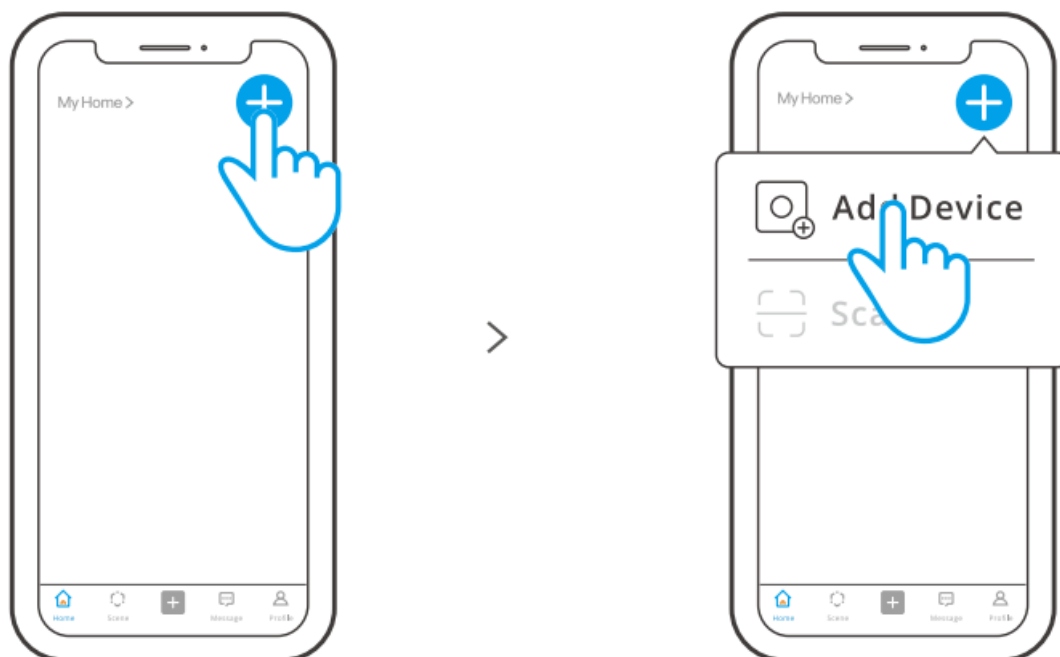


Tap “+” and select “Add Device”, then operate following the prompt on the APP.

Compatible Pairing Mode

If you fail to enter Quick Pairing Mode (Touch), please try “Compatible Pairing Mode ” to pair.

1. Long press Pairing button for 5s until the Wi-Fi LED indicator changes in a cycle of two short flashes and one long flash and release. Long press Pairing button for 5s again until the Wi-Fi LED indicator flashes quickly. Then, the device enters Compatible Pairing Mode.
2. Tap “+” and select “Add Device”, then operate following the prompt on the APP.



Pairing and Clearing with RF Remote Controller

The switch supports the remote controller with 433.92M Hz frequency brand to turn on/off, and each channel can

learn it independently, which is local short-range wireless control not Wi-Fi control.

- **Pairing Method**

Long press the touch button you want to pair for 3s until the indicator flashes “red” and release, then short press the corresponding button on the RF remote controller and you will see the indicator flashes “red” again after successful pairing. Other buttons can be paired through this method.

- **Clearing Method**

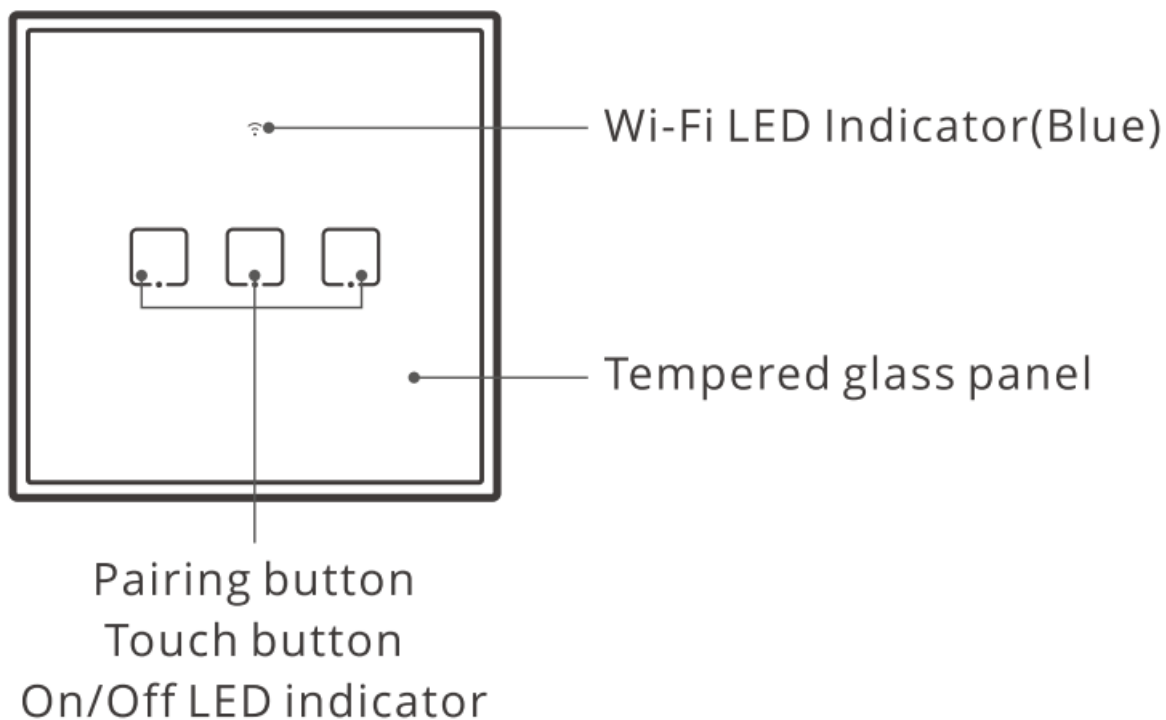
Long press the touch button you want to clear for 5s until the indicator light flashes “red” twice and release, then short press any button on the RF remote controller and you will see the indicator flashes “red” again after successful clearing. Other buttons can be cleared through this method.

Specifications

Model	<ul style="list-style-type: none">• T0EU1C/T0EU2C/T0EU3C T1EU1 C/T1EU2C/T1 EU3C• T2EU1C/T2EU2C/T2EU3C• T3EU1C/T3EU2C/T3EU3C
Max. input	T0/T1 /T2/T3(EU1C):100-240V AC 50/60Hz 2A TO/T1 /T2/T3(EU2C): 100 -240V AC 50/60Hz 4A T0/T1 /T2/T3(EU3C): 100-240V AC 50/60Hz 3A
Max. output	<ul style="list-style-type: none">• T0/T1 /T2/T3(EU1 C): 1 00-240V AC 50/60Hz 2A• T0/T1 /T2/T3(EU2C): 100-240V AC 50/60Hz 2A/Gang 4A/Total T0/T1 /T2/T3(EU3C): 100-240V AC 50/60Hz 1A/Gang 3A/Total
LED load	<ul style="list-style-type: none">• T0/T1/T2/T3(EU1C/ EU2C):• 1SOW/11 0V(per channel) , 300W/220V(per channel) T0/T1 /T2/T3(EU3C):• 60W/110V(per channel), 100W/220V(per channel)
Wi-Fi	IEEE 802.11 b/g/n 2.4GHz
RF	433.92MHz
Operating systems	Android & iOS
Materials	PC +tempered glass panel
Dimension	86x86x35mm

- T0(EU1 C/EU2C/EU3C)does not support the remote controller with 433.92MHz.

Product Introduction



- The device weight is less than 1 kg.
- The installation height of less than 2 mis recommended.

Wi-Fi LED indicator status instruction

Wi-F i LED in dicator status	Status instruction
Flashes (one long and two short)	Qu ick Pairing Mode
Keeps on	Device is connected successful ly
Flashes quickly	Compatible Pairing Mode
Flashes quickly once	Un able to discover the router
Fla shes quickly twice	Connect to the router but fail to connect to Wi-Fi
Flashes quickly three times	Upgrading

Features

Turn on/off the light or fan from anywhere, schedule it power on/off and share it with your family to control together.



Remote Control



Single/Countdown
Timing



Voice Control



Share Control



Smart Scene



433MHz
Remote Control



Camera Feature



Touch Control



LED Backlight

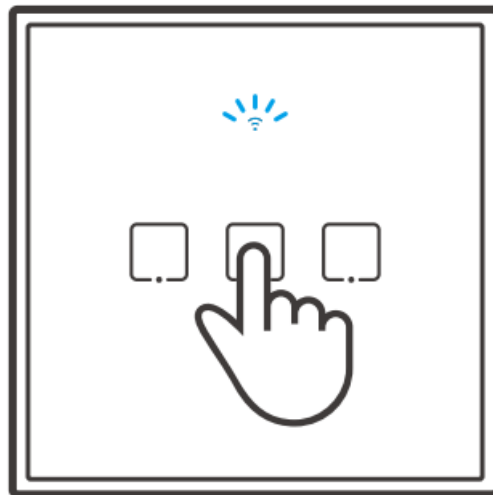


LAN Control

11

Factory Reset

Long press any button you desired to pair for about 5s until the Wi-Fi LED indicator changes in a cycle of two short and one long flash and release, then the reset is successful. The device enters quick pairing mode (Touch).



Please reset the switch to factory defaults if you want to use other Wi-Fi networks, then reconnect the network.

Common Problems

Q: Why my device stays “Offline”?

A: The newly added device needs 1 – 2mins to connect Wi-Fi and network. If it stays offline for a long time, please judge these problems by the blue Wi-Fi indicator status

1. The blue Wi-Fi indicator quickly flashes once per second, which means that the switch failed to connect your Wi-Fi
 1. Maybe you have entered a wrong Wi-Fi password.
 2. Maybe there's too much distance between the switch your router or the environment causes interference, consider getting close to the router. If failed, please add it again.
 3. The SG Wi-Fi network is not supported and only supports the 2.4GHz wireless network.
 4. Maybe the MAC address filtering is open. Please turn it off.

If none of the above methods solved the problem, you can open the mobile data network on your phone to create a Wi-Fi hotspot, then add the device again.

2. Blue indicator quickly flashes twice per second, which means your device has connected to Wi-Fi but failed to connect to the server.

Ensure steady enough network. If double flash occurs frequently, which means you access an unsteady network, not a product problem. If the network is normal, try to turn off the power to restart the switch.

Hereby, Shenzhen Sonoff Technologies Co., Ltd. declares that the radio equipment type TOEU1 C/T0EU2C/T0EU3C/T1 EU1 C/T1 EU2C/T1 EU3C/T2EU1 C/T2EU2C/T2EU3C/ T3EU1 C/T3EU2C/T3EU3C is in compliance with Directive 2014/53/EU. The full text of the EU declaration of conformity is available at the following internet address: <https://sonoff.tech/usermanuals>

TX Frequency:

- **WiFi:** 2412-2472MHz
- RX Frequency
- **WiFi:** 2412-2472MHz
- **SRD:** 433.92MHz
- RF Output Power
- 13.86dBm

Shenzhen Sonoff Technologies Co., Ltd.

- 1001, BLDG8, Lianhua Industrial Park, shenzhen, GD, China ZIP code: 518000 Website: sonoff.tech
- MADEINCHINA

Documents / Resources

	<p>SONOFF T2EU2C-TX Two Button Touch Wifi Wall Switch [pdf] User Manual T2EU2C-TX Two Button Touch Wifi Wall Switch, T2EU2C-TX, Two Button Touch Wifi Wall Switch, Button Touch Wifi Wall Switch, Touch Wifi Wall Switch, Wifi Wall Switch, Wall Switch</p>
-------------------------------------------------------------------------------------	---------------------------------------------------------------------------------------------------------------------------------------------------------------------------------------------------------------------------------------------------------------------------------

References

- [User Manual](#)