

SONOFF T2EU-RF 433MHz Wireless Stick-on Smart Wall Switch User Manual

Contents

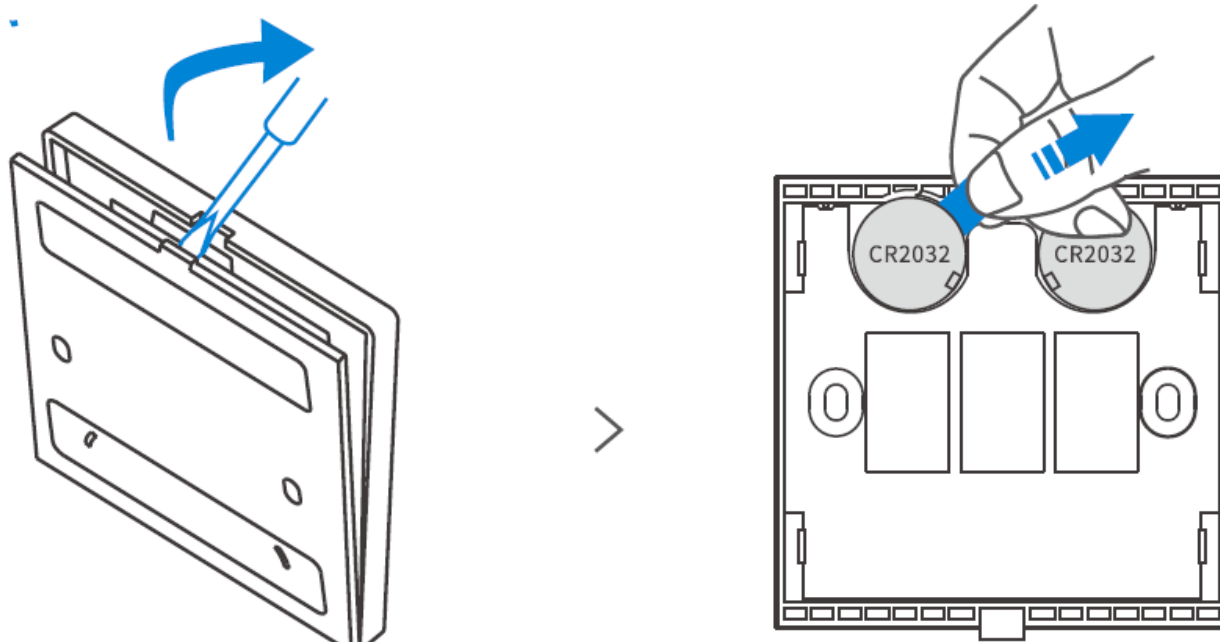
- [1 SONOFF T2EU-RF 433MHz Wireless Stick-on Smart Wall Switch](#)
- [2 Product Introduction](#)
- [3 Product Specification](#)
- [4 Supported SON OFF devices](#)
- [5 Control Ways](#)
- [6 Installation Methods](#)
- [7 FCC Warning](#)
- [8 Documents / Resources](#)
- [9 Related Posts](#)



SONOFF T2EU-RF 433MHz Wireless Stick-on Smart Wall Switch

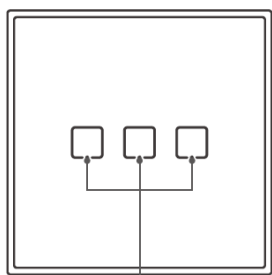


Pull out the battery insulation sheet

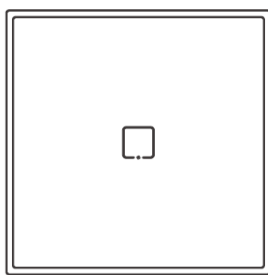


Product Introduction

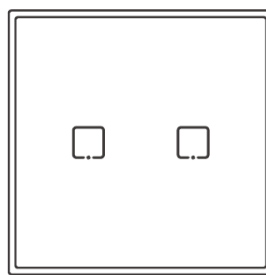
This device is used with SONOFF TX Wi-Fi smart wall switches (with 433M Hz) together, and also works with other 433MHz smart devices.



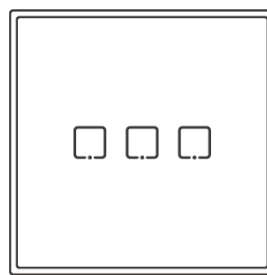
Touch switch/RF pairing button



1C



2C



3C

The device only supports pairing one button at a time. Please refer to the switch user manual for RF pairing and clearing method.

Product Specification

Model	T2EUIC-RF/T2EU2C-RF/T2EU3C-R F/T3EUIC-RF/T3EU2C-RF/T3EU3C-RF			
Power supply	6V (3V button cell x 2)			
Battery model	CR2032	I	RF	I 433.92MHz
Materials	PC+tempered glass panel	I	Dimension	I 86x86x9mm

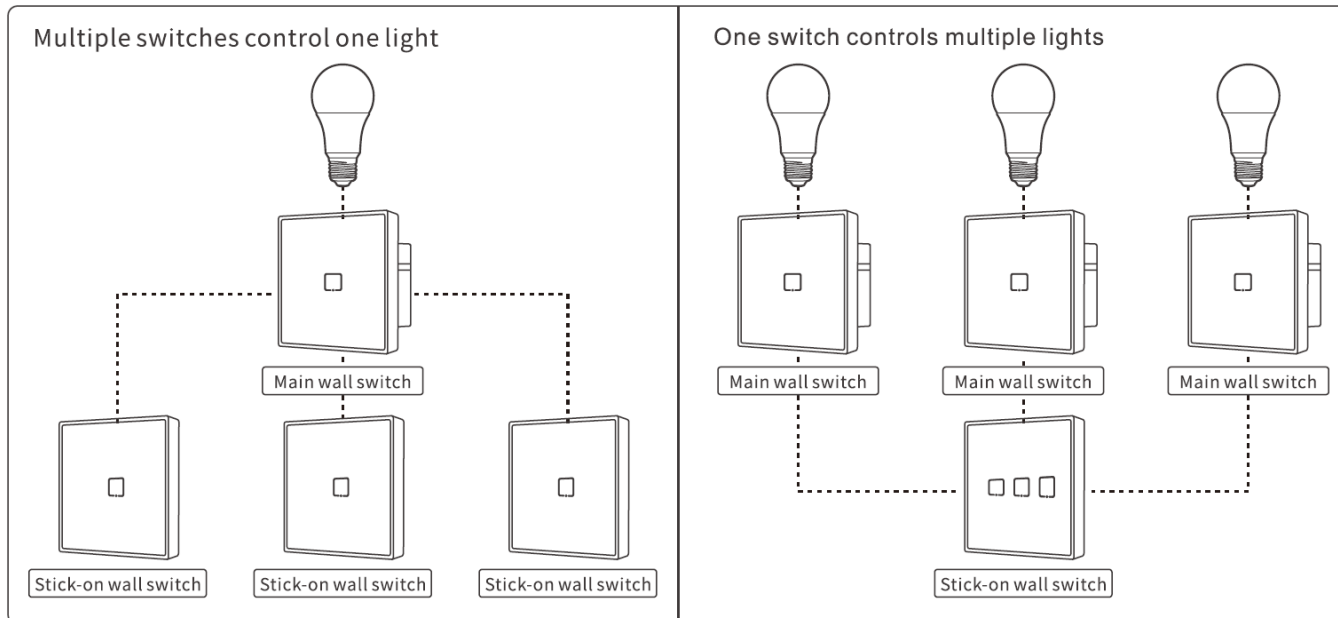
The T3EU 1C-RF/T3EU2C-RF/T3EU3C-RF with black color are not released yet.

Supported SON OFF devices

- RFR2

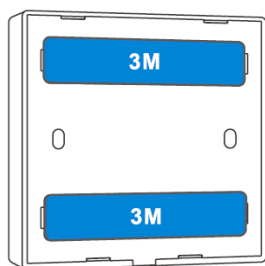
- BASICRFR3
- SlampherR2
- 4CHPROR3
- TX EU/UK/US Wi-Fi smart wall switches (with 433MHz) series

Control Ways

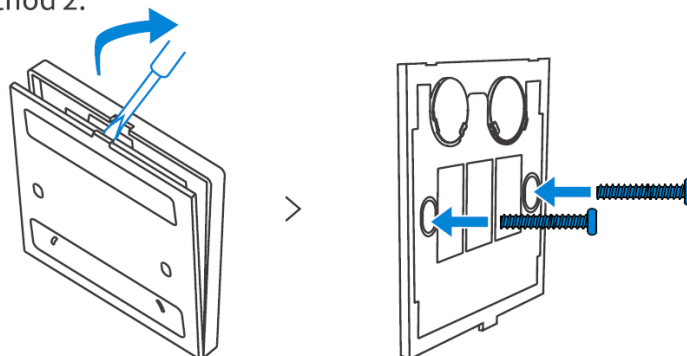


Installation Methods

Method 1:



Method 2:



The device weight is less than 1kg. The installation height of less than 2m is recommended.

FCC Warning

Changes or modifications not expressly approved by the party responsible for compliance could avoid the user's authority to operate the equipment.

This device complies with part 15 of the FCC Rules. Operation is subject to the following two conditions: (1) This device may not cause harmful interference, and (2) this device must accept any interference received, including interference that may cause undesired operation.

FCC Radiation Exposure Statement:

This equipment complies with FCC radiation exposure limits set forth for an uncontrolled environment. This equipment should be installed and operated with minimum distance 20cm between the radiator & your body. This transmitter must not be co-located or operating in conjunction with any other antenna or transmitter.

Note:

This equipment has been tested and found to comply with the limits for a Class B digital device, pursuant to part 15 of the FCC Rules. These limits are designed to provide reasonable protection against harmful interference in a residential installation. This equipment generates, uses and can radiate radio frequency energy and, if not installed and used in accordance with the instructions, may cause harmful interference to radio communications. However, there is no guarantee that interference will not occur in a particular installation. If this equipment does cause harmful interference to radio or television reception, which can be determined by turning the equipment off and on, the user is encouraged to try to correct the interference by one or more of the following measures:

- Reorient or relocate the receiving antenna.
- Increase the separation between the equipment and receiver.
- Connect the equipment into an outlet on a circuit different from that to which the receiver is connected.
- Consult the dealer or an experienced radio/TV technician for help.

Hereby, Shenzhen Son off Technologies Co., Ltd. declares that the radio equipment type T2EU1C-RF/ T2EU2C-RF/T2EU3C-RF/T3EU1C-RF/T3EU2C-RF/T3EU3C-RF is in compliance with Directive 2014/53/EU. The full text of the EU declaration of conformity is available at the following internet address: <https://sonoff.tech/usermanuals>

Documents / Resources

	<p>SONOFF T2EU-RF 433MHz Wireless Stick-on Smart Wall Switch [pdf] User Manual T2EU-RF 433MHz Wireless Stick-on Smart Wall Switch, T2EU-RF, 433MHz Wireless Stick-on Smart Wall Switch, Stick-on Smart Wall Switch, Smart Wall Switch, Wall Switch</p>
--	---