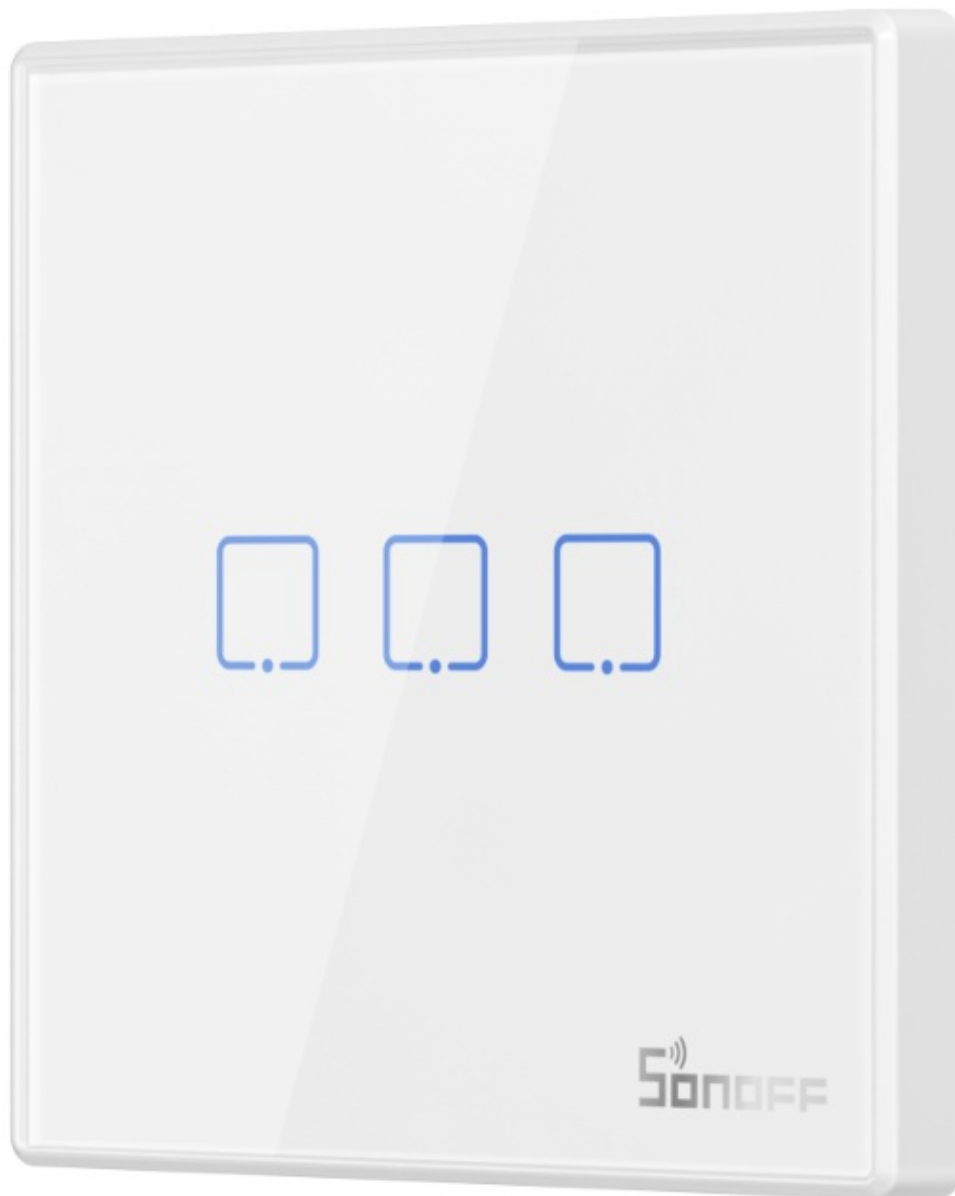


SONOFF T2EU-RF 433 MHz Wireless Stick-on Smart Wall Switch User Manual

[Home](#) » [SonOFF](#) » SONOFF T2EU-RF 433 MHz Wireless Stick-on Smart Wall Switch User Manual 

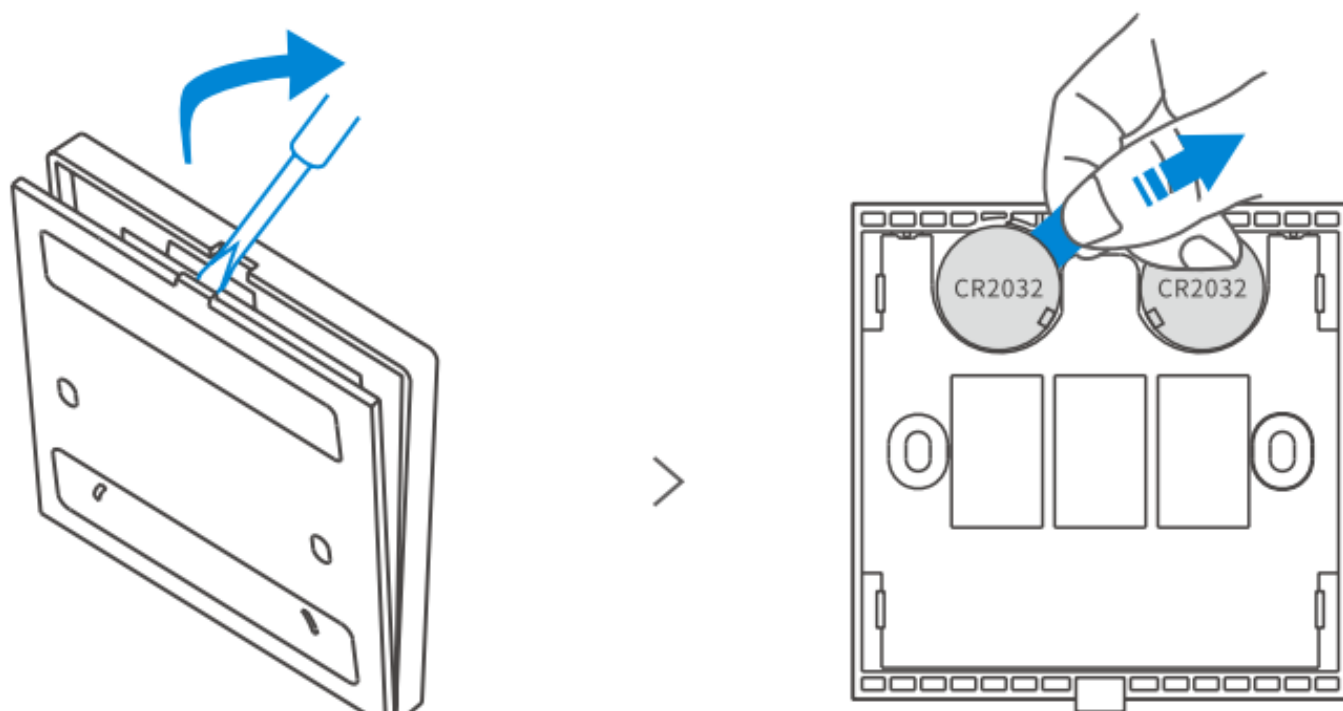
SONOFF T2EU-RF 433 MHz Wireless Stick-on Smart Wall Switch



Contents

- [1 Pull out the battery insulation sheet](#)
- [2 Product Introduction](#)
- [3 Product Specification](#)
- [4 Supported SON OFF devices](#)
- [5 Control Ways](#)
- [6 Installation Methods](#)
- [7 Documents / Resources](#)
- [8 Related Posts](#)

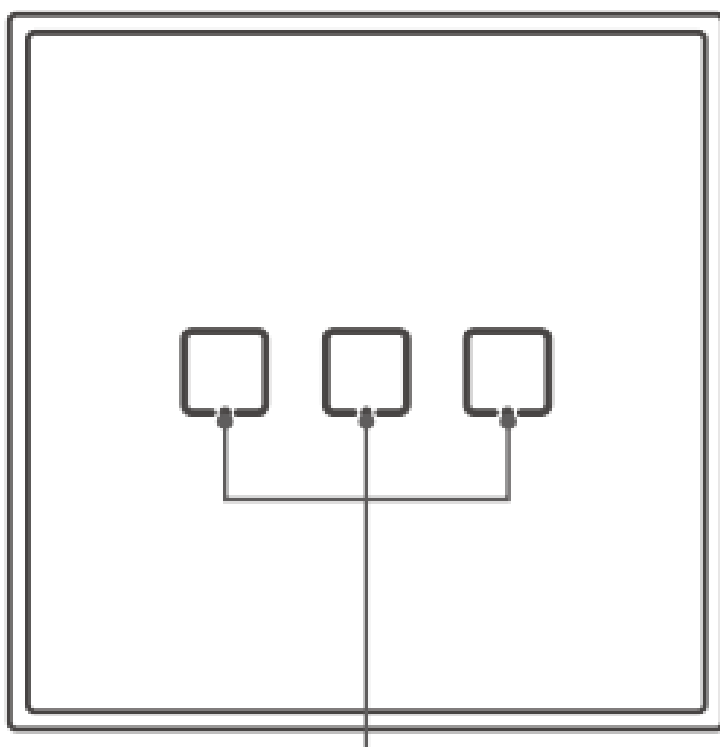
Pull out the battery insulation sheet



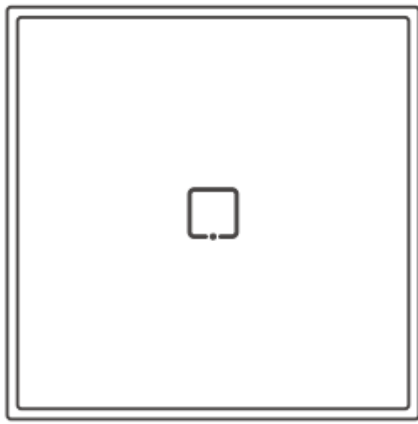
⚠ The device has the version with battery and without battery.

Product Introduction

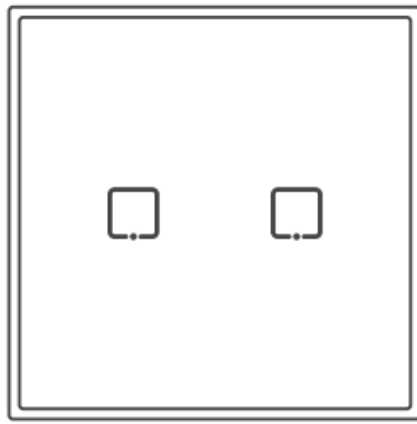
This device is used with SONOFF TX Wi-Fi smart wall switches (with 433M Hz) together, and also works with other 433MHz smart devices.



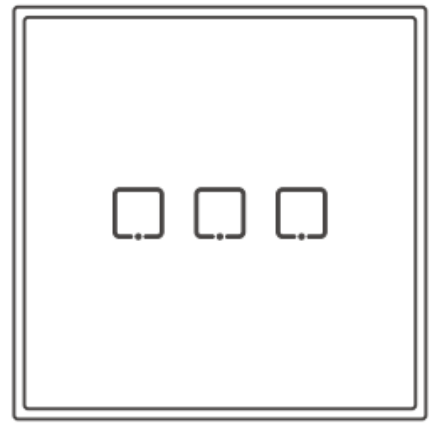
Touch switch/RF pairing button



1C



2C



3C



The device only supports pairing one button at a time. Please refer to the switch user manual for RF pairing and clearing method.

Product Specification

Mode I	T2EU1C-RF/T2EU2C-RF/T2EU3C-RF/T3EU1C-RF/T3EU2C-RF/T3EU3C-RF		
Power supply	6V {3V button cell x 2}		
Battery model	CR2032	RF	433.92MHz
Materials	PC+tempered glass panel	Dimension	86x86x9mm

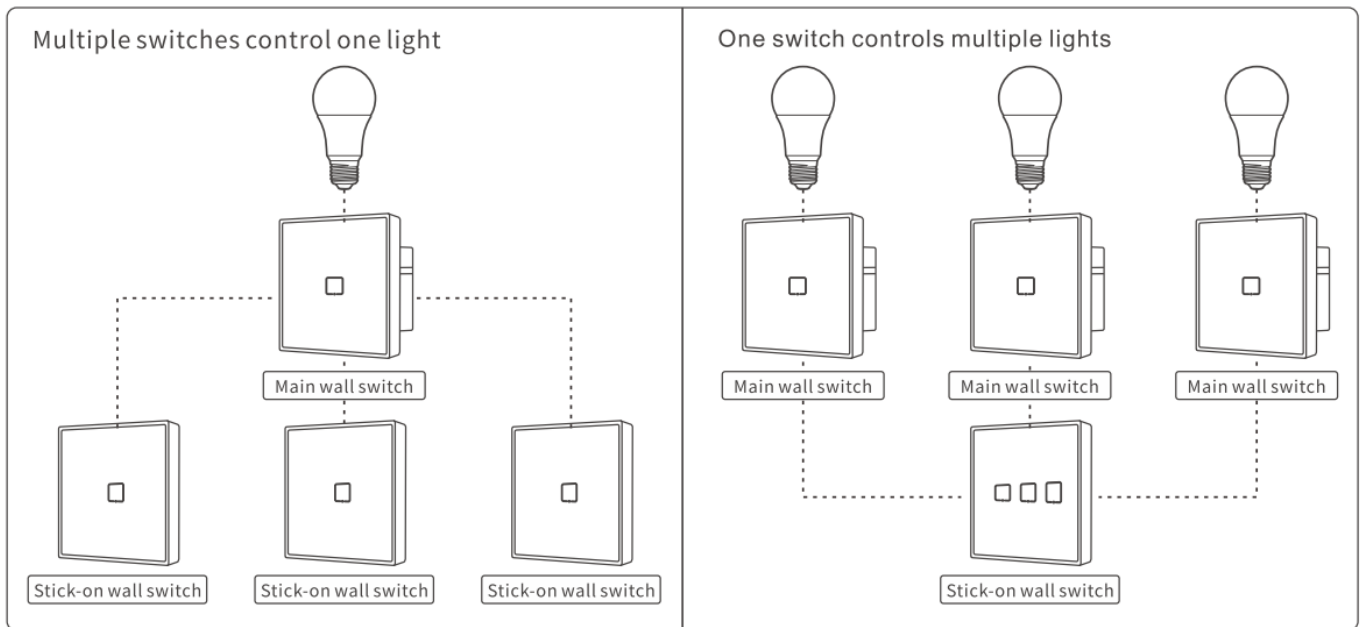


T3EU 1C-RF/T3EU2C-RF/T3EU3C-RF with black color are not released yet.

Supported SON OFF devices

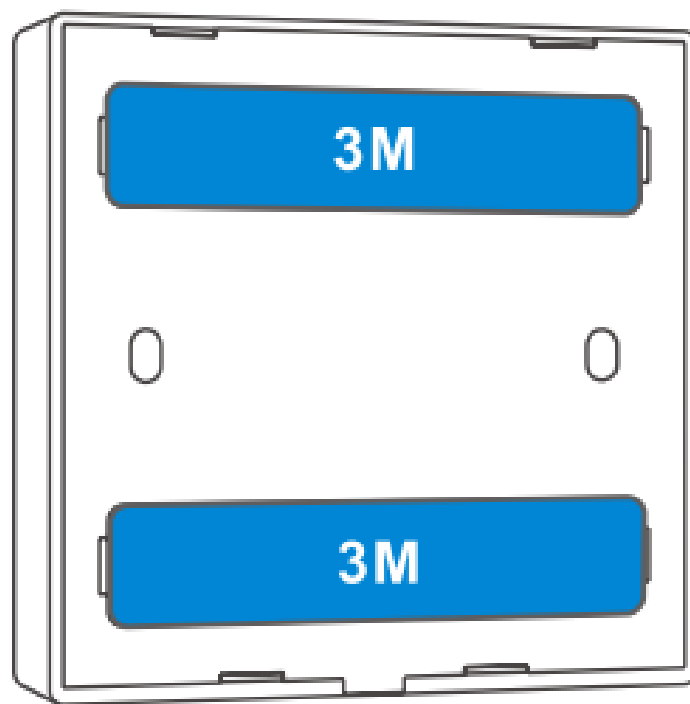
- RFR2
- BASICRFR3
- SlampherR2
- TX EU/UK/US Wi-Fi smart wall switches (with 433MHz) series

Control Ways

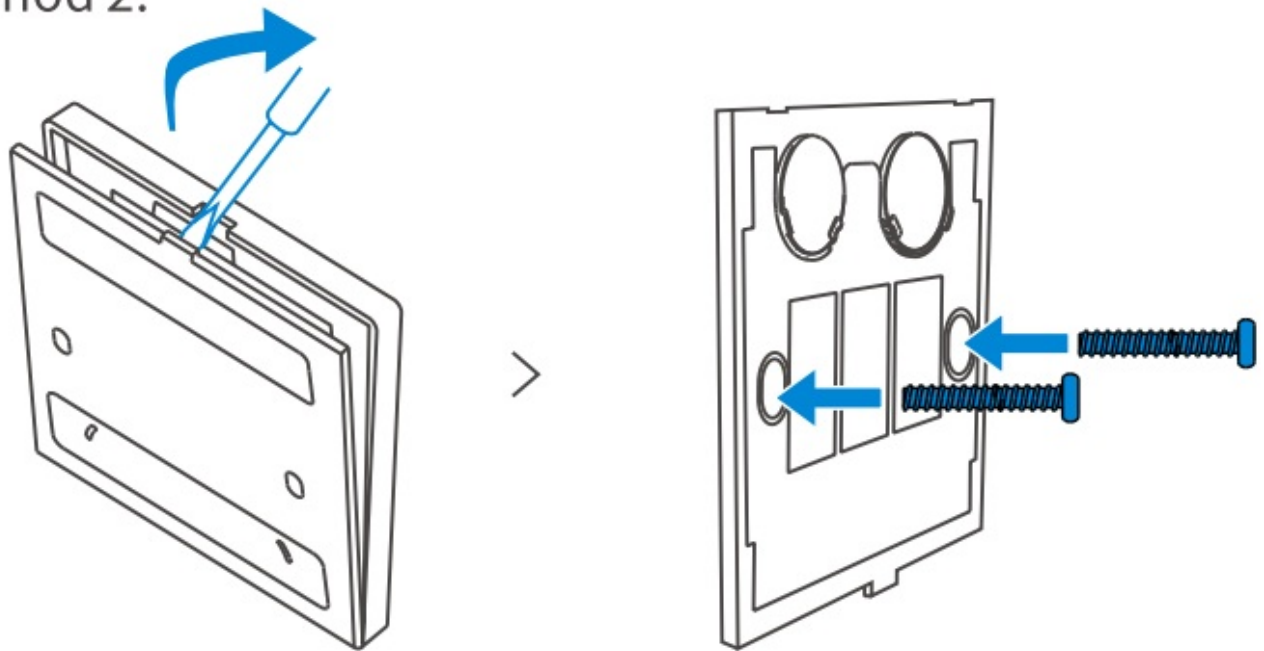


Installation Methods

Method 1:



Method 2:

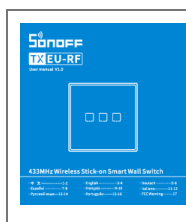


Shenzhen Sonoff Technologies Co., Ltd.
1001, BLDGS, Lianhua Industrial Park, shenzhen, GD, China
21 P code: 518000
Website: sonoff.tech



SONOFF

Documents / Resources



[SONOFF T2EU-RF 433 MHz Wireless Stick-on Smart Wall Switch](#) [pdf] User Manual
T2EU, 2APN5-T2EU, 2APN5T2EU, T2EU-RF 433 MHz Wireless Stick-on Smart Wall Switch, T
2EU-RF, 433 MHz Wireless Stick-on Smart Wall Switch