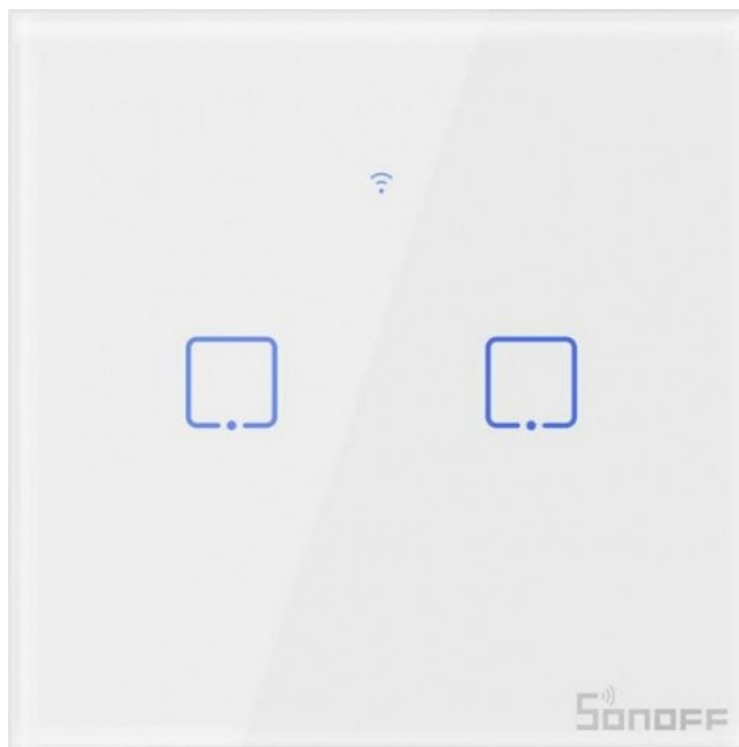


SONOFF T1-2 Smart Touch Switch User Guide

[Home](#) » [SonOFF](#) » SONOFF T1-2 Smart Touch Switch User Guide 

SONOFF T1-2 Smart Touch Switch User Guide



Contents

1 INSTRUCTION

1.1 Power off

2 Wiring instruction

3 Download the ewe Link App

4 Power on

5 Add device

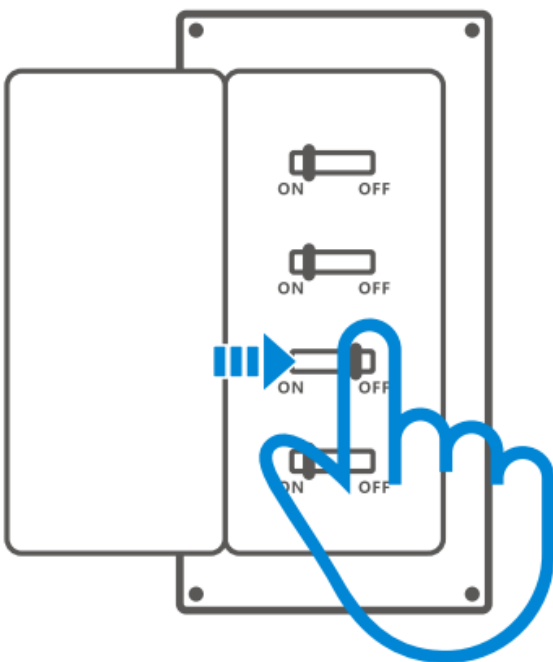
6 Documents / Resources

6.1 References

7 Related Posts

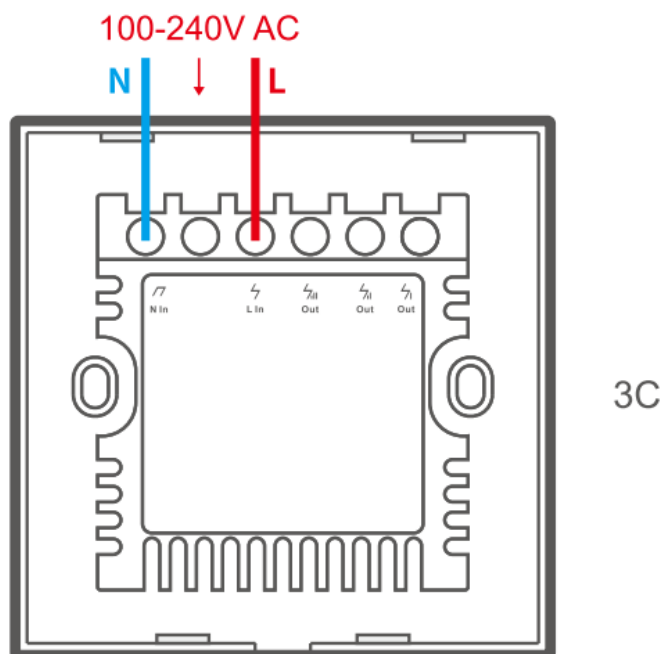
INSTRUCTION

Power off




Please install and maintain the device by a professional electrician. To avoid electric shock hazard, do not operate any connection or contact the terminal connector while the device is powered on!

Wiring instruction

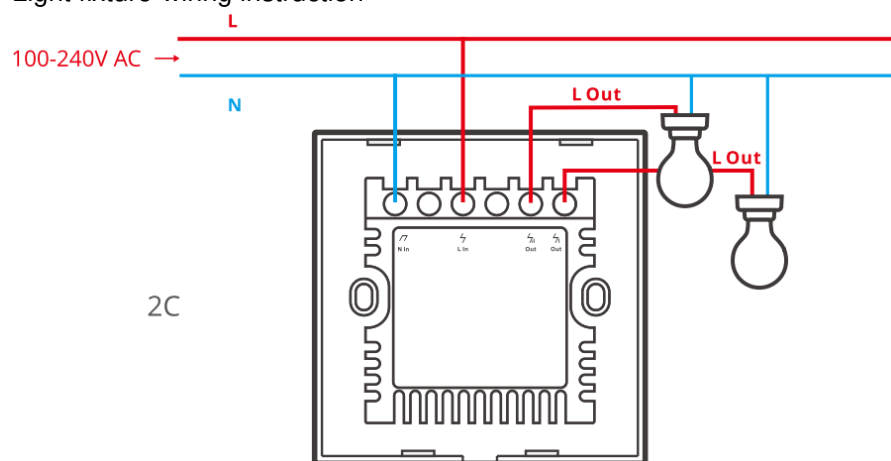


 N In Neutral input,

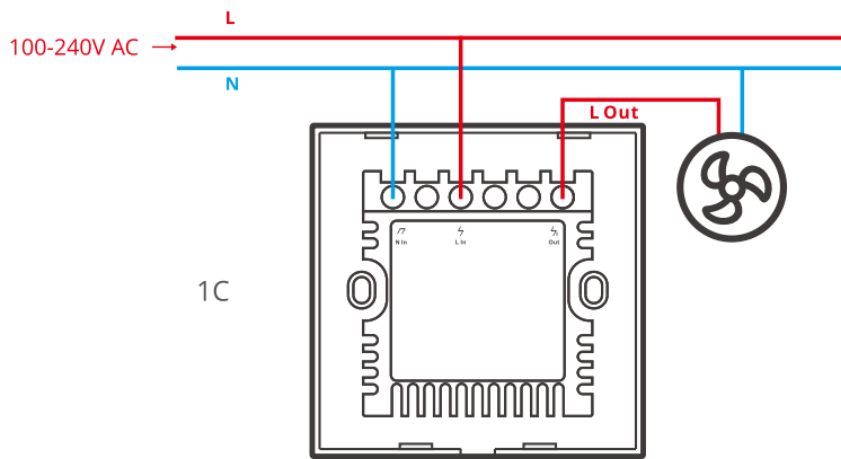
 L In Live input

   Live output

Light fixture-wiring instruction



Appliance wiring instruction.

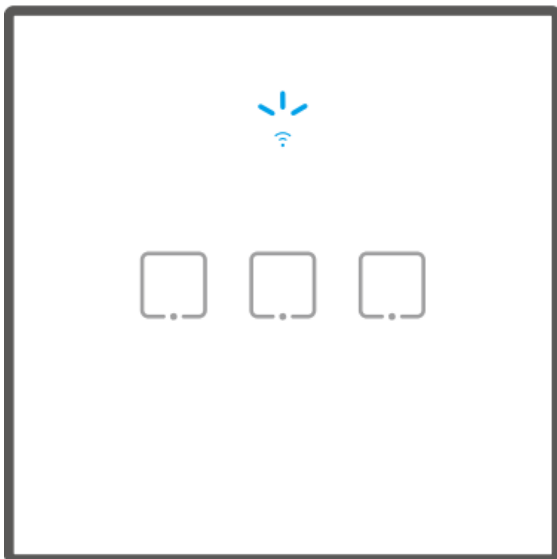


Make sure all wires are connected correctly.

Download the ewe Link App



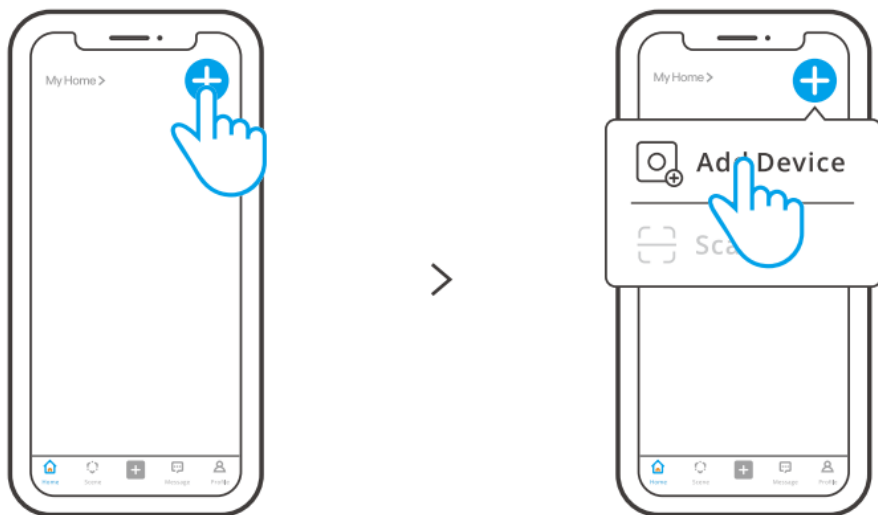
Power on



After powering on, the device will enter the Pairing Mode during the first use. The Wi-Fi LED indicator changes in a cycle of two short and one long flash and release.

The device will exit the Pairing Mode if not paired within 3mins, if you want to enter this mode, please long press any pairing button for about 5s until the Wi Fi LED indicator changes in a cycle of two short and one long flash and release.

Add device



Tap” and select “Add Device”, then operate following the prompt on the App

<https://sonoff.tech/usermanuals>

Scan the QR code or visit the website to learn about the detailed user manual and help



Skatole	Skatole	Manual
PAP 20	PAP 21	PAP 22
Carta	Carta	Carta
RACCOLTA		

SAR Warning

Under normal use of condition, this equipment should be kept a separation distance of at least 20 cm between the antenna and the body of the user.

EU Declaration of Conformity

Hereby, Shenzhen Sonoff Technologies Co., Ltd. declares that the radio equipment type TOUK1C/TOUK2C/TOUK3C/ T1UK1C/T1UK2C/T1UK3C/T2UK1C/T2UK2C/TZUK3C/T3UK1C/T3UK2C/T3UK3C is in compliance with Directive 2014/53/EU. The full text of the EU declaration of conformity is available at the following internet address: <https://www.sonoff.tech/usermanuals>

WEEE Disposal and Recycling Information



■ All products bearing this symbol are waste electrical and electronic equipment (WEEE as in directive 2012/19/EU) which should not be mixed with unsorted household waste. Instead, you should protect human health and the environment by handing over your waste equipment to a designated collection point for the recycling of waste electrical and electronic equipment, appointed by the government or local authorities. Correct disposal and recycling will help prevent potential negative consequences to the environment and human health. Please contact the installer or local authorities for more information about the location as well as terms and conditions of such collection points.

For CE Frequency:

EU Operating Frequency Range:

802.11 b/g/n20:2412-2472MHz, SRD: 433.92MHz (Receive Only for T1UK1C/T1UK2C/T1UK3C/T2UK1C/T2UK2C/T2UK3C/T3UK1C/T3UK2C/T3UK3C)

EU Output Power:

Wi-Fi 2.4G≤20dBm

To ensure the safety of your electrical installation, it's essential either a Miniature Circuit Breaker (MCB) or a Residual Current Operated Circuit Breaker (RCBO) with an electrical rating of 6A has been installed before the device.

Shenzhen Sonoff Technologies Co., Ltd.

1001, BLDG8, Lianhua Industrial Park, shenzhen, GD, China

ZIP code: 518000

Website: sonoff.tech

Service email: support@itead.cc

MADE IN CHINA



Points de collecte sur www.quefairedemesdechets.

SONOFF

Documents / Resources



[SONOFF T1-2 Smart Touch Switch](#) [pdf] User Guide

T1-2 Smart Touch Switch, T1-2, Smart Touch Switch, Touch Switch, Switch

References

- [User Manual](#)

