

SONOFF SwitchMan R5 Smart Controller User Manual

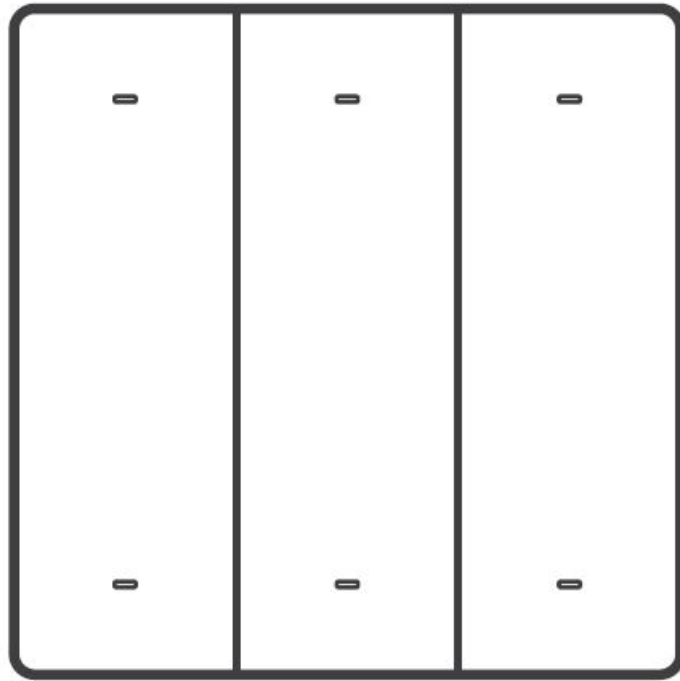
[Home](#) » [SonOFF](#) » SONOFF SwitchMan R5 Smart Controller User Manual 

Contents

- [1 SONOFF SwitchMan R5 Smart Controller](#)
- [2 Feature](#)
- [3 Set scene control](#)
- [4 Product Parameter](#)
- [5 Installation Methods](#)
- [6 Documents / Resources](#)
- [7 Related Posts](#)



SONOFF SwitchMan R5 Smart Controller

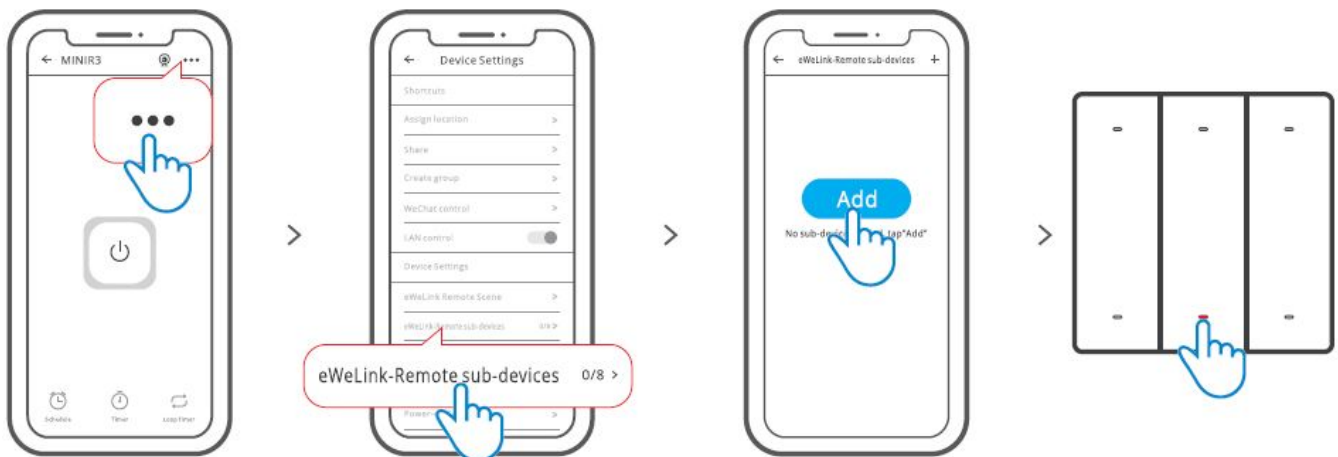


Before using R5 please takeout the battery insulation sheet

Feature

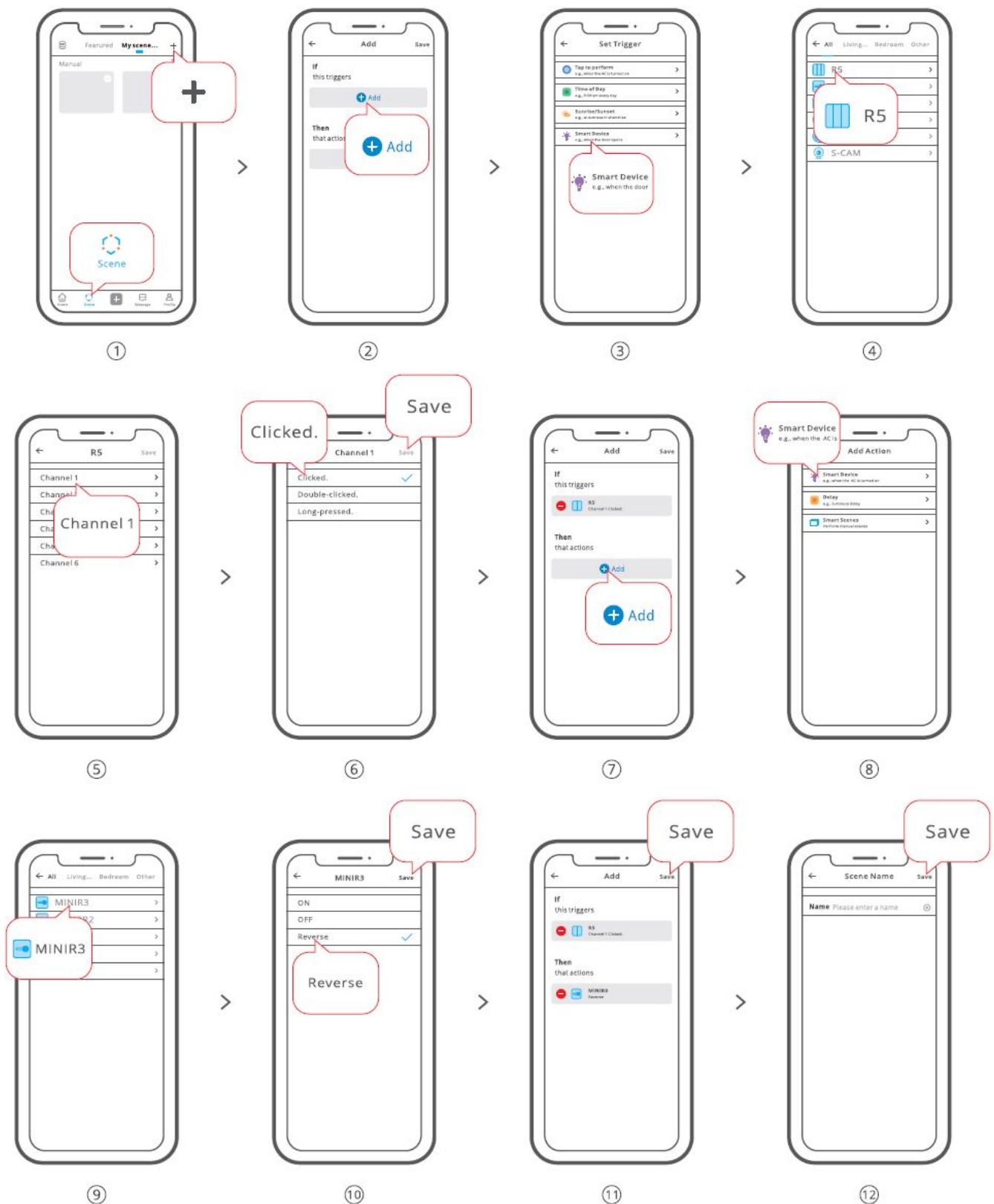
RS is a 6-key scene remote controller and can work with the devices with “eWeLink-Remote” feature. When RS is added into the gateways successfully, it can trigger other smart devices by setting Scene on eWeLinkApp

Add RS to “eWeLink-Remote” gateway



Enter the setting interface of “eWeLink-Remote” gateway, click “eWeLink-Remote sub-devices” and “add”, then trigger any button on R5 to add successfully.

Set scene control

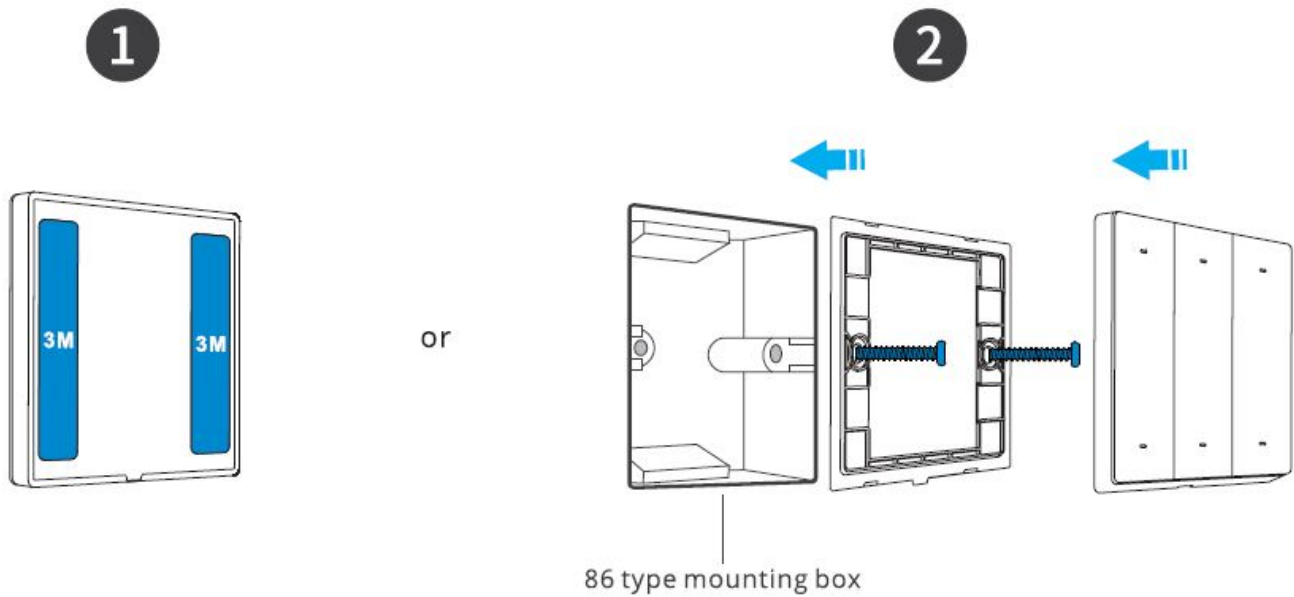


Product Parameter

- Power supply: 6V (3V button cell x 2)
- Battery model: CR2032
- Product Size: 86x86x13.5mm
- Model: R5
- Casing material: PC Vo
- Color: Dim Gray

- Working temperature: 0°C- 40°C


Installation Methods



Scan the QR code or visit the website to learn about the newest user manual and help

Hereby, Shenzhen Sonoff Technologies Co., Ltd. declares that the radic equipment type RS Is in compliance with Dir ective 2014/53/EU.The full text of the EU declaration of conformity Js available at the following Internet address: <https://sonoff.tech/usermanuals>

Documents / Resources

	SONOFF SwitchMan R5 Smart Controller [pdf] User Manual R5, 2APN5R5, SwitchMan R5 Smart Controller, SwitchMan R5, Smart Controller
---	--