

SONOFF
SONOFF SPM-
Main Smart
Stackable Power
Meter



SONOFF SPM-Main Smart Stackable Power Meter User Guide

[Home](#) » [SonOFF](#) » SONOFF SPM-Main Smart Stackable Power Meter User Guide 

Contents

- [1 SONOFF SPM-Main Smart Stackable Power Meter](#)
- [2 Power off](#)
- [3 Wiring instruction](#)
- [4 Light fixture wiring instruction](#)
- [5 Download the eWeLink App](#)
- [6 Power on](#)
- [7 Add device](#)
- [8 Add the slave unit to the main unit](#)
- [9 Insert Micro SD Card](#)
- [10 Equipment Installation](#)
- [11 WEEE Disposal and Recycling Information](#)
- [12 Documents / Resources](#)
 - [12.1 References](#)
- [13 Related Posts](#)



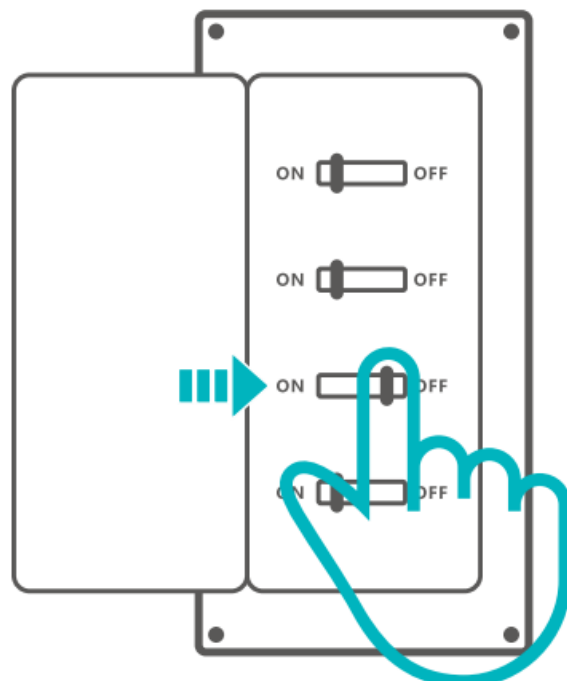
SONOFF SPM-Main Smart Stackable Power Meter



SPM-Main and SPM-4Relay are the main unit and slave unit of SONOFF smart stackable power meter, and both are designed to work together. You can control the added slave unit in the App after pairing the main unit to the eWeLink App.

Power off

1

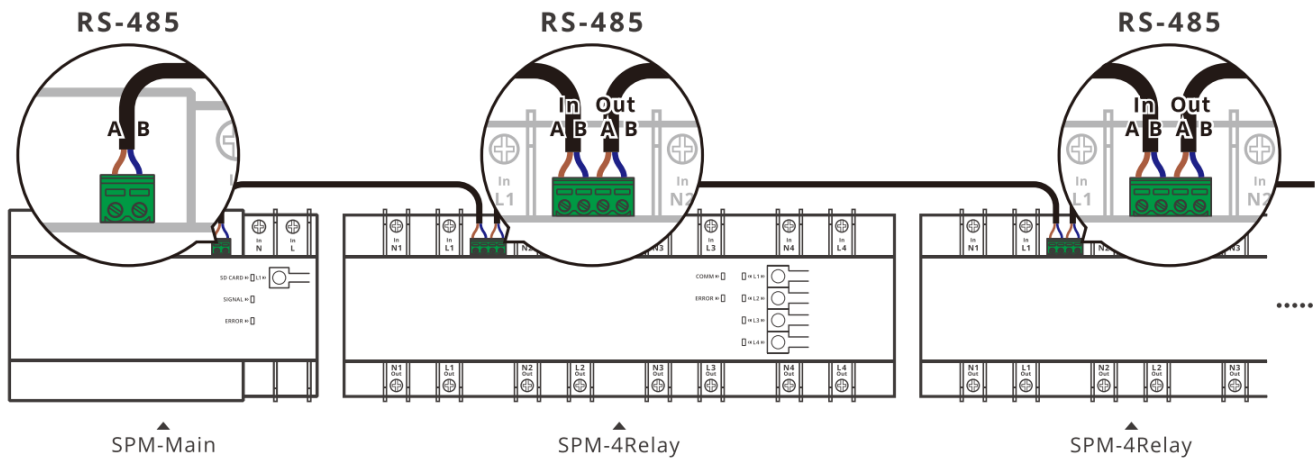


WARNING

Please install and maintain the device by a professional electrician. To avoid electric shock hazard, do not operate any connection or contact the terminal connector while the device is powered on!

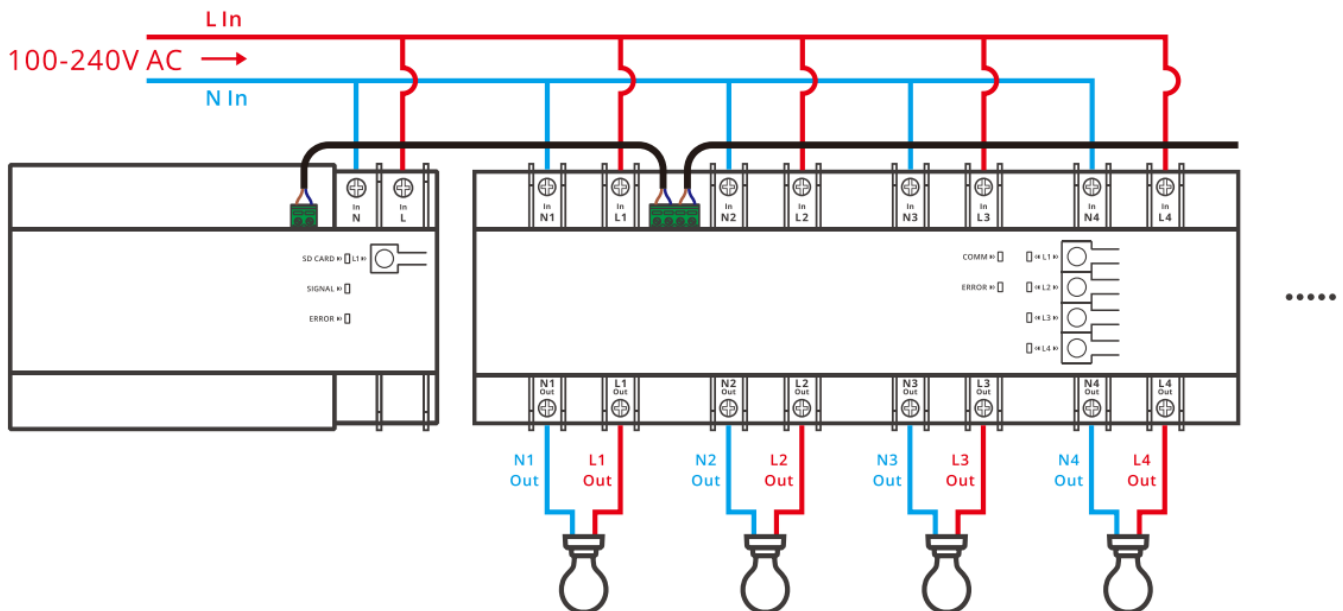
Wiring instruction

Wiring instruction of main & main unit, slave & slave unit.

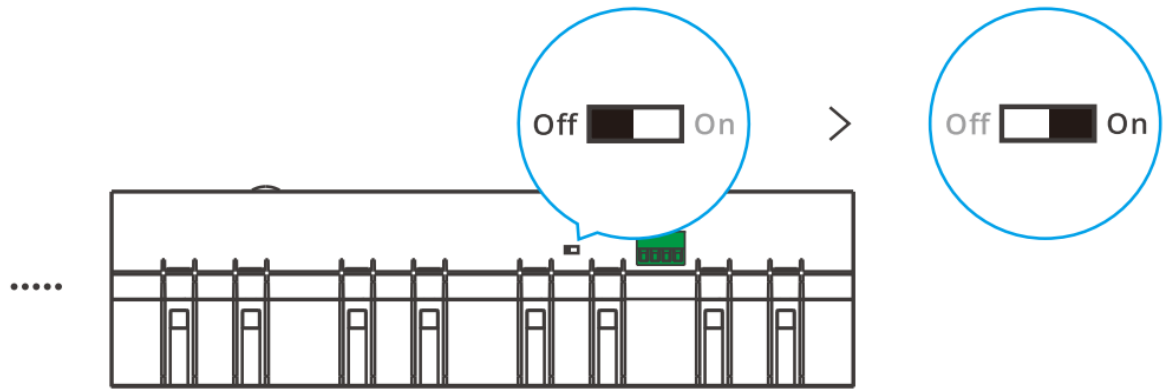


The main unit can be added up to 32 slave units (The total wire length should be less than 100M).

- The wire connected to the main unit and slave unit must be 2-core RVVSP cable with single wire diameter of 0.2mm².



Light fixture wiring instruction



The “RS-485 termination resistor switch” of the slave unit is off by default. To make sure stable communication, the “RS-485 termination resistor switch” of the last slave unit is required to turn on.

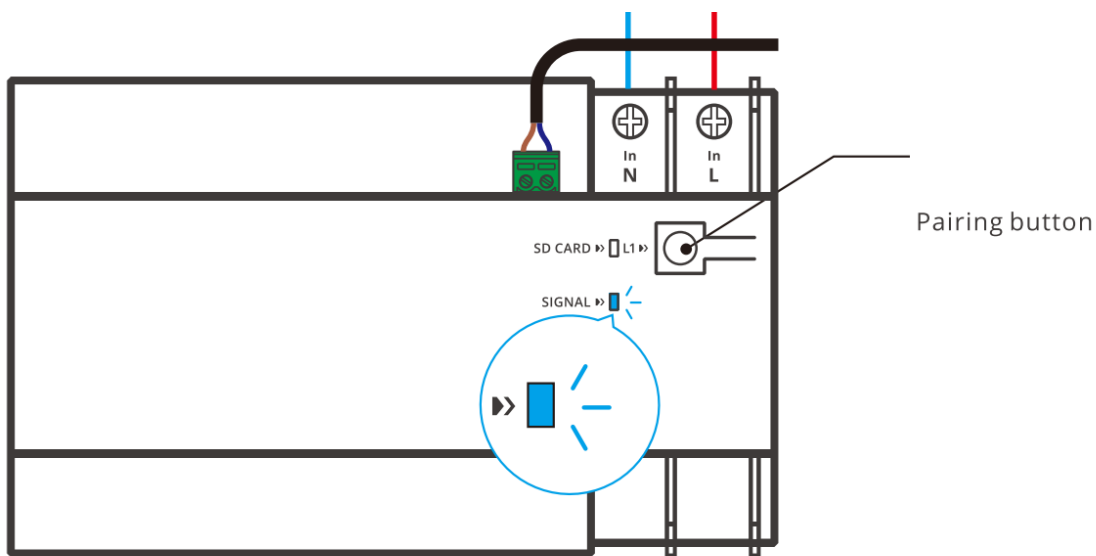
The slave unit has 4 channels and the channel 1 (L1 In and N1 In) is used to power the slave unit on, which means the slave unit can work normally when the L1 and N1 is connected the power supply. Each input terminal has a single output terminal that the output terminal only provides the power when the corresponding input terminal is connected to the power subplot.

Ensure wiring is correct before power the units on

Download the eWeLink App



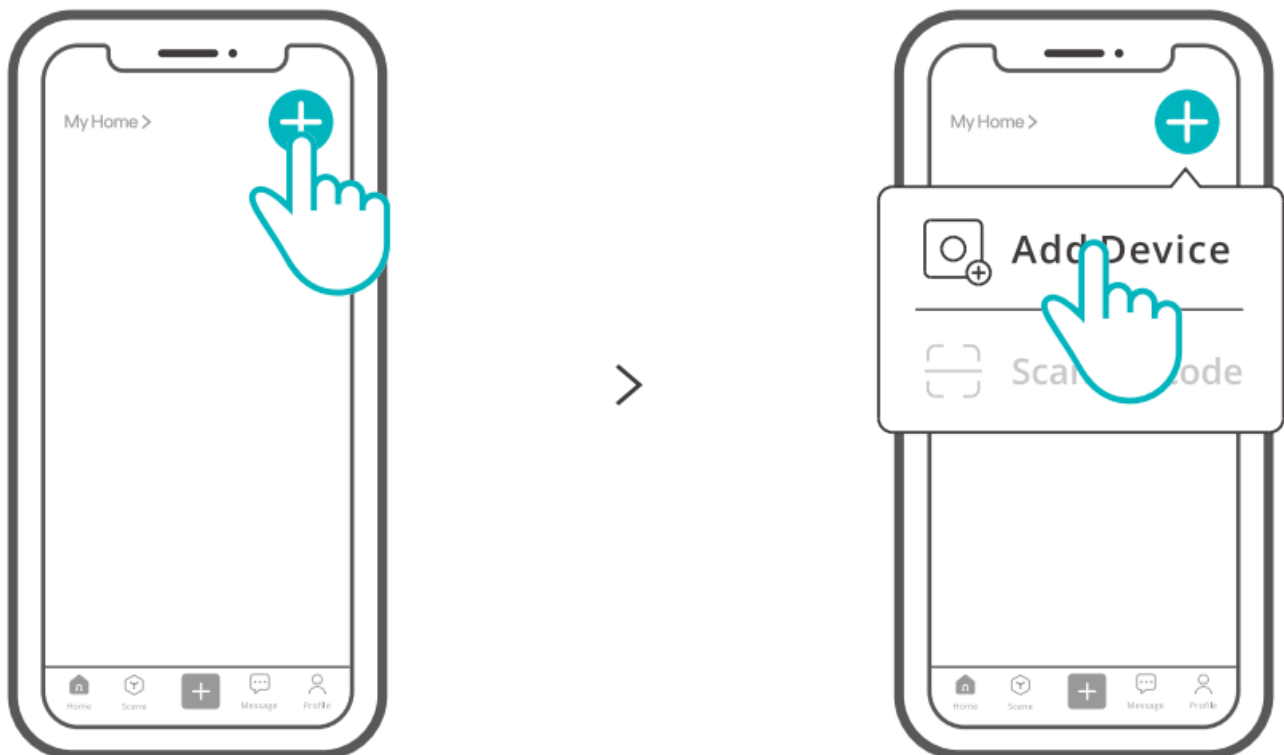
Power on



After powering on, the device will enter the Pairing Mode by default during the first use. The LED signal Indicator flashes quickly.

The device will exit the Pairing Mode if not paired within 3mins. If you want to enter this mode, please long press the pairing button for about 5s until the LED signal Indicator flashes quickly and release.

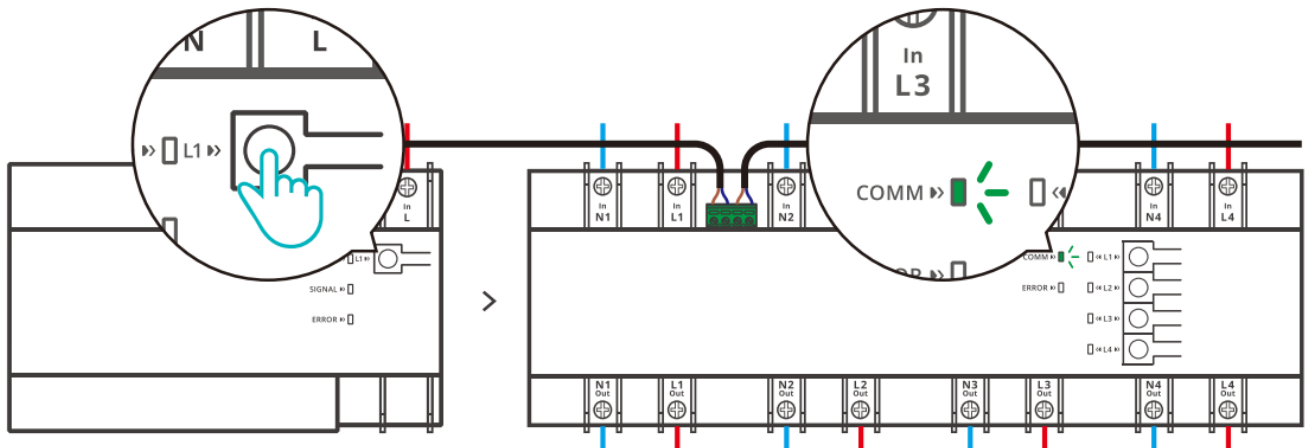
Add device



Tap “+” and select “Add Device”, then operate following the prompt on the App.

It's required to turn on the Bluetooth on your Phone when adding a device.

Add the slave unit to the main unit

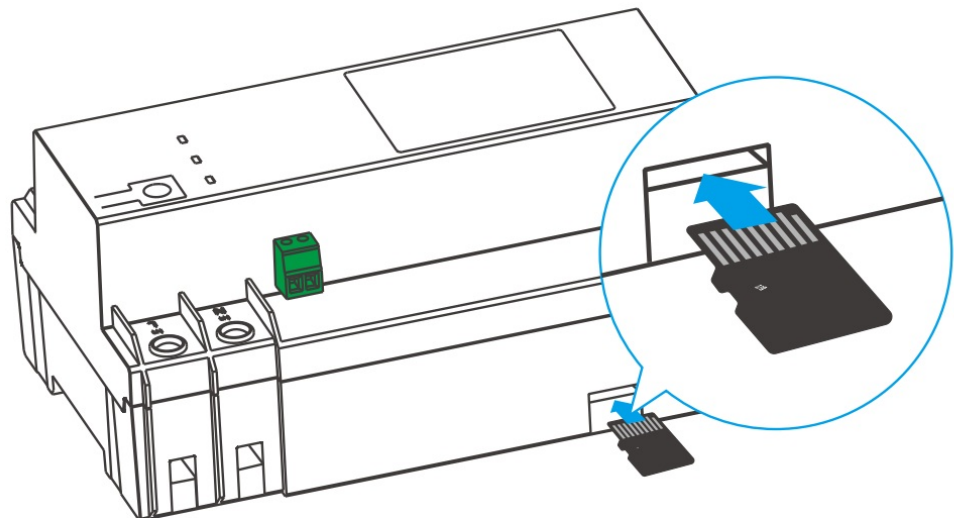


Press the pairing button on the main unit once to enable it enter the scan status, then the LED signal indicator of the slave unit “flashes slowly”. The slave unit will appear in the list of main unit interface on the eWeLink App as a sub-device after being added to the main unit.

The slave unit has not been scanned successfully within 20s, the main unit will exit the scan status. If you want to scan the slave unit again, you can press the pairing button on the main unit once again.

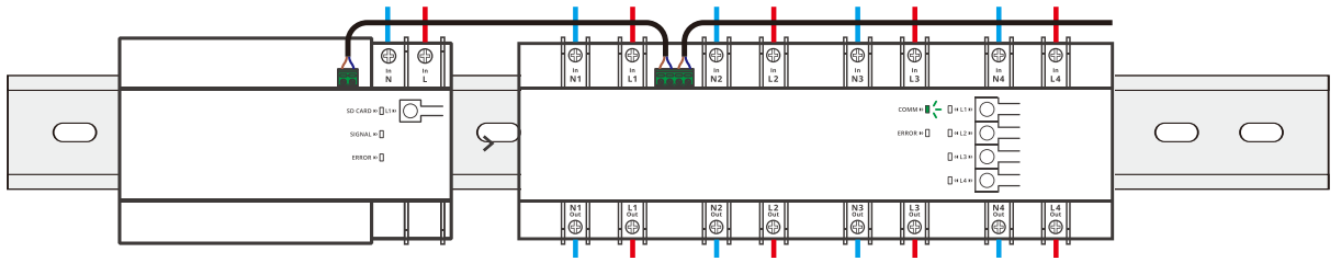
Insert Micro SD Card

SPM-Main ▶



Make sure Micro SD Card is inserted correctly (Micro SD Card is sold separately).

Equipment Installation



35mm rail installation

User Manual



<https://sonoff.tech/usermanuals>

Scan the QR code or visit the website to learn about the detailed user manual and help.

To ensure the safety of your electrical installation, it's essential either a Miniature Circuit Breaker (MCB) or a Residual Current Operated Circuit Breaker (RCBO) with an electrical rating of 80A has been installed before the SPM-4Relay.

Warning

Under normal use of condition, this equipment should be kept a separation distance of at least 20 cm between the antenna and the body of the user.

WEEE Disposal and Recycling Information

WEEE Disposal and Recycling Information All products bearing this symbol are waste electrical and electronic equipment (WEEE as in directive 2012/19/EU) which should not be mixed with unsorted house hold waste. Instead, you should protect human health and the environment by handing over your waste equipment to a designated collection point for the recycling of waste electrical and electronic equipment, appointed by the government or local authorities. Correct disposal and recycling will help prevent potential negative consequences to the environment and human health. Please contact the installer or local authorities for more information about the location as well as terms and conditions of such collection points.



EU Declaration of Conformity

Hereby, Shenzhen Sonoff Technologies Co., Ltd. declares that the radio equipment type SPM-Main, SPM-4Relay is in compliance with Directive 2014/53/EU. The full text of the EU declaration of conformity is available at the following internet address: <https://sonoff.tech/compliance/>

For CE Frequency

EU Operation frequency Range 2402-2480MHz(BLE)

- 802.11 b/g/n20: 2412-2472MHz(Wi-Fi),
- 802.11 n40:2422-2462MHz(Wi-Fi)

EY Output Power

- BLE: $\leq 20\text{dBm}$
- Wi-Fi: $\leq 20\text{dBm}$



WARNING


- Do not ingest battery, Chemical Burn Hazard.
- This product contains a coin / button cell battery. If the coin / button cell battery is swallowed, it can cause severe internal burns in just 2 hours and can lead to death.
- Keep new and used batteries away from children.
- If the battery compartment does not close securely, stop using the product and keep it away from children. – If you think batteries might have been swallowed or placed inside any part of the body, seek immediate medical attention.
- Replacement of a battery with an incorrect type that can defeat a safeguard (for example, in the case of some lithium battery types).
- Disposal of a battery into fire or a hot oven, or mechanically crushing or cutting of a battery, that can result in an explosion.
- Leaving a battery in an extremely high temperature surrounding environment that can result in an explosion or the leakage of flammable liquid or gas.
- A battery subjected to extremely low air pressure that may result in an explosion or the leakage of flammable liquid or gas.

Manufacturer: Shenzhen Sonoff Technologies Co., Ltd. Address:1001, BLDG8, Lianhua Industrial Park, shenzhen, GD, China ZIP code: 518000

MADE IN CHINA



Documents / Resources

	<p>SONOFF SPM-Main Smart Stackable Power Meter [pdf] User Guide</p> <p>SPM-Main 4Relay, SPM-Main Smart Stackable Power Meter, SPM-Main, Smart Stackable Power Meter, Stackable Power, Stackable Power, Power</p>
---	--

References

- [User Manual](#)

[Manuals+.](#) [Privacy Policy](#)

This website is an independent publication and is neither affiliated with nor endorsed by any of the trademark owners. The "Bluetooth®" word mark and logos are registered trademarks owned by Bluetooth SIG, Inc. The "Wi-Fi®" word mark and logos are registered trademarks owned by the Wi-Fi Alliance. Any use of these marks on this website does not imply any affiliation with or endorsement.