

SONOFF SNZB-05P Zigbee Water Leak Sensor



SONOFF SNZB-05P Zigbee Water Leak Sensor User Manual

[Home](#) » [SonOFF](#) » SONOFF SNZB-05P Zigbee Water Leak Sensor User Manual 

Contents

- 1 [SONOFF SNZB-05P Zigbee Water Leak Sensor](#)
- 2 [Product Information](#)
- 3 [Product Usage Instructions](#)
- 4 [FAQ](#)
- 5 [Introduction](#)
- 6 [Specification](#)
- 7 [Instructions](#)
- 8 [Matched Gateways](#)
- 9 [Battery Replacement](#)
- 10 [FCC Compliance Statement](#)
- 11 [CONTACT](#)
- 12 [Documents / Resources](#)
 - 12.1 [References](#)
- 13 [Related Posts](#)



SONOFF SNZB-05P Zigbee Water Leak Sensor



Product Information

- The SNZB-05P is a Zigbee water leak sensor that operates on the Zigbee 3.0 protocol.
- It features a gold-plated probe for corrosion resistance and extended detection support.
- The sensor has a 5-year battery life and an IP67 rating, making it suitable for detecting water leaks in various environments.

Product Usage Instructions

1. Download the eWeLink App from the Google Play Store or Apple App Store.
2. Rotate and remove the bottom cover of the device.
3. Take out the battery insulation sheet to power on the device.
4. Scan the QR code on the device using the app.
5. Select “Add Device” in the app.
6. Long press the button on the device for 5 seconds.
7. Wait for the LED indicator to flash slowly for the 180s.
8. Select “Zigbee gateway” in the app and wait for the addition to be completed.

Effective Communication Distance Verification

To verify effective communication distance, install the device in the desired place and press the Pairing button on the device. If the LED indicator flashes twice, it means the device is within effective communication distance of the Zigbee network.

1. The water leak detection cable may trigger false leak detection in high humidity conditions.
2. After detecting water immersion, ensure to thoroughly dry the water immersion line before reusing it.
3. Rotate and remove the bottom cover of the device.
4. Lift the battery cover (both sides need to be lifted) to replace the battery (CR2477).

FAQ

- **Q:** How do I know if my Zigbee water leak sensor is within communication range?
- **A:** Press the Pairing button on the device; if the LED indicator flashes twice, it indicates that the device is within effective communication distance of the Zigbee network.
- **Q:** Can I use multiple water leak detection cables with one device?
- **A:** One device can be paired with multiple water leak detection cables for enhanced coverage.

Introduction

- SNZB-05P is a low-power Zigbee 3.0 protocol-based water leak sensor that detects real-time water leakage in the environment.
- It allows for work with other devices through scene linkage settings.
- For instance, placing the sensor in areas like the basement, kitchen, or attic, it will trigger a Gateway sound alarm and send an App notification when water leakage is detected.



5-year Battery Life



IP Rating



Gold-plated Probe
for Corrosion
Resistance



Extended Detection
Support

1. LED indicator (Red)

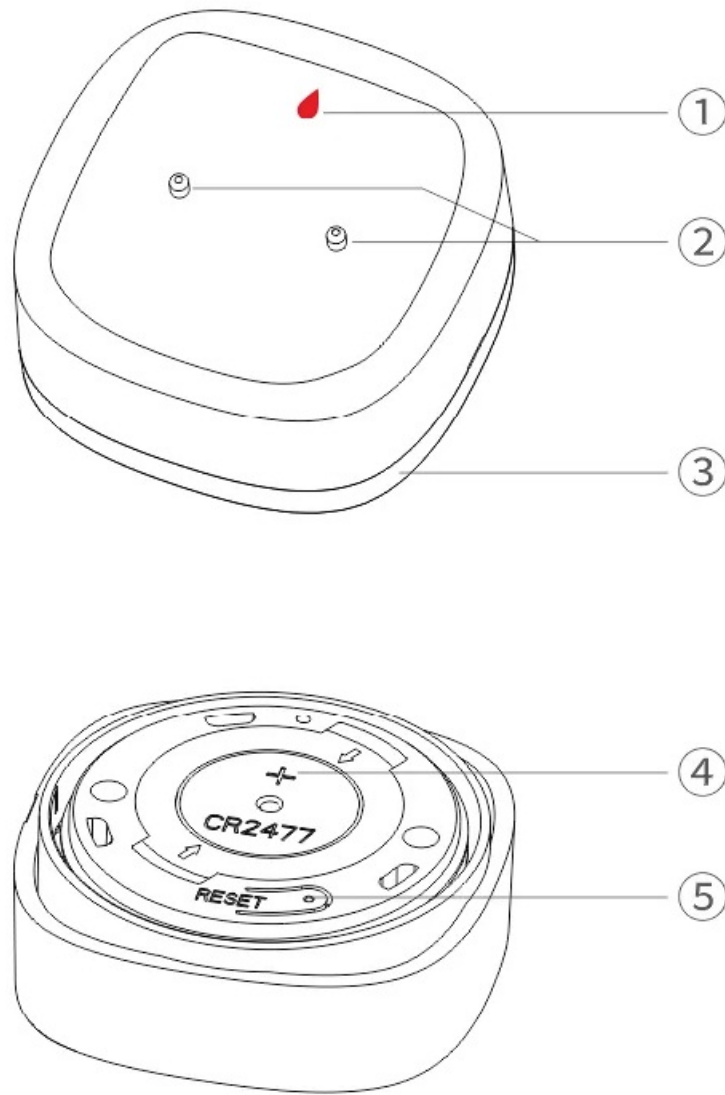
- Flash slowly for 180 seconds: The device is in pairing mode.
- Keep on for 3s and then keep off: Pairing Successful
- Exit flashing slowly and keep off: Pairing Failed /Timeout
- Flash once quickly: Not added to the gateway, and short press the button.
- Flash twice quickly: Added to the gateway and online, and short press the button
- Flash slowly for 30 seconds: Abnormal communication

2. Probe Foot

3. Bottom Cover

4. Battery Cover

5. Button



Press and hold for 5 seconds: The device enters the pairing mode.

Specification

Model	SNZB-05P
MCU	EFR32MG22
Input	3V ---
Battery model	CR2477
Color	White
IP rating	IP67
Usage	Placed on the ground (with optional external extension cord).
Communication distance	130m (Open space)

Battery life	5 years (Trigger frequency: 50 times/day)
Product dimension	48x48x21.6mm
Net weight	34.3g (Battery not included)
Casing materials	PC+ABS
Wireless connection	Zigbee 3.0
Pairing time	180s
Applicable place	Indoor
Working temperature	-10°C ~ 60°C
Working humidity	0-100%RH
Working height	Less than 5000m
Certification	CE/FCC/ISED/RoHS
Executive standard	EN 62368-1

Download the eWeLink App & Add SONOFF Zigbee gateway

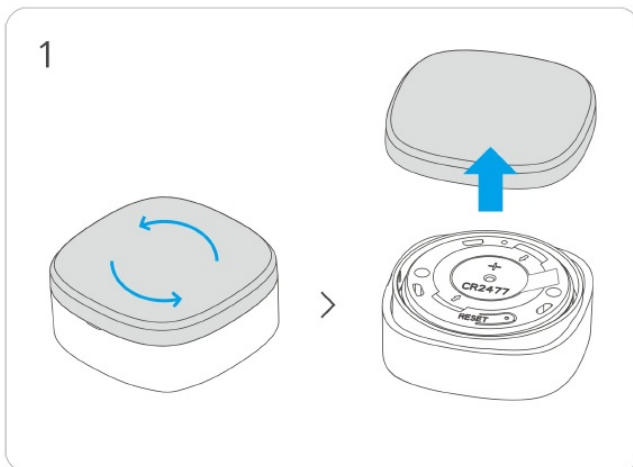
- Please download the “eWeLink” App from the Google Play Store or Apple App Store.



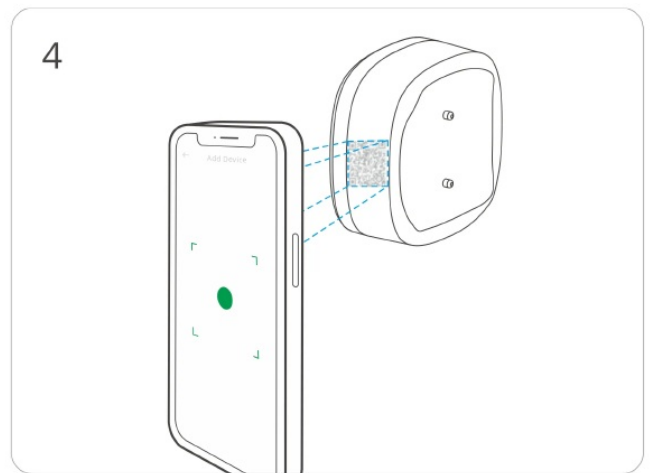
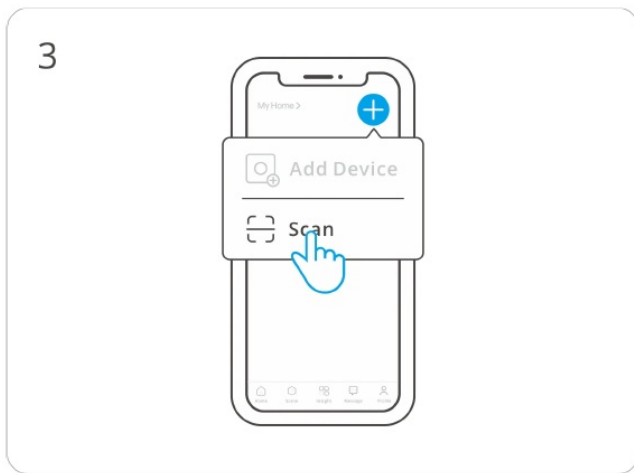
Scan the QR Code to Add the Device

Instructions

1. Rotate and remove the bottom cover

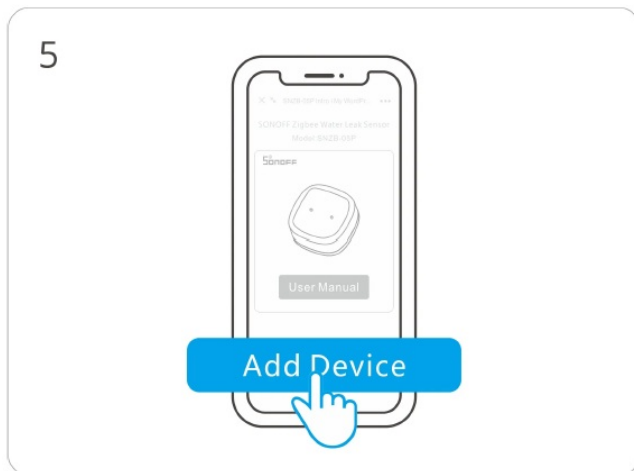


2. Take out the battery insulation sheet to power the device.
3. Enter “Scan”.



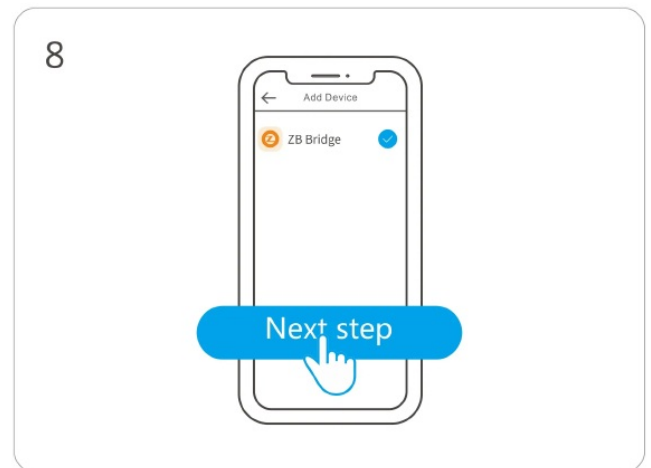
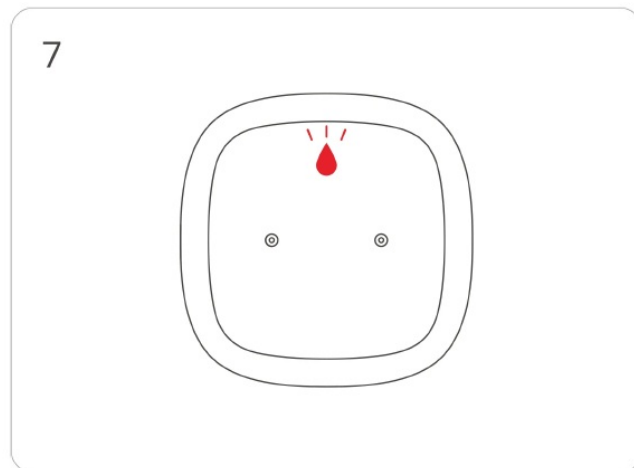
4. Scan the QR code on the device.

5. Select "Add Device".



6. Long press the button for 5 seconds.

7. The LED indicator flashes slowly for the 180s.



8. Select Zigbee gateway.

9. Wait until the addition is done.

9



Matched Gateways

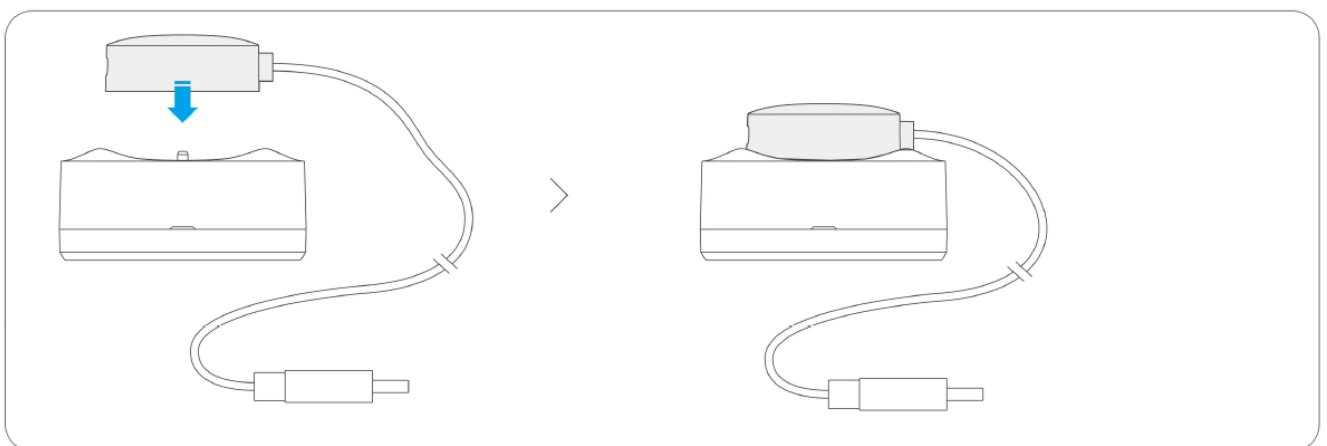
- SONOFF ZBBridge, ZBBridge-P, NSPanel Pro, AIBridge, ZBDongel-P, ZBDongel-E Third-party compatible gateway models:
- SmartThings Gateway Model: SmartThings Hub V3, Aeotec Smart Home Hub V3 Other gateways supporting ZigBee3.0 wireless protocol. Detailed information is under the final product.

Effective Communication Distance Verification

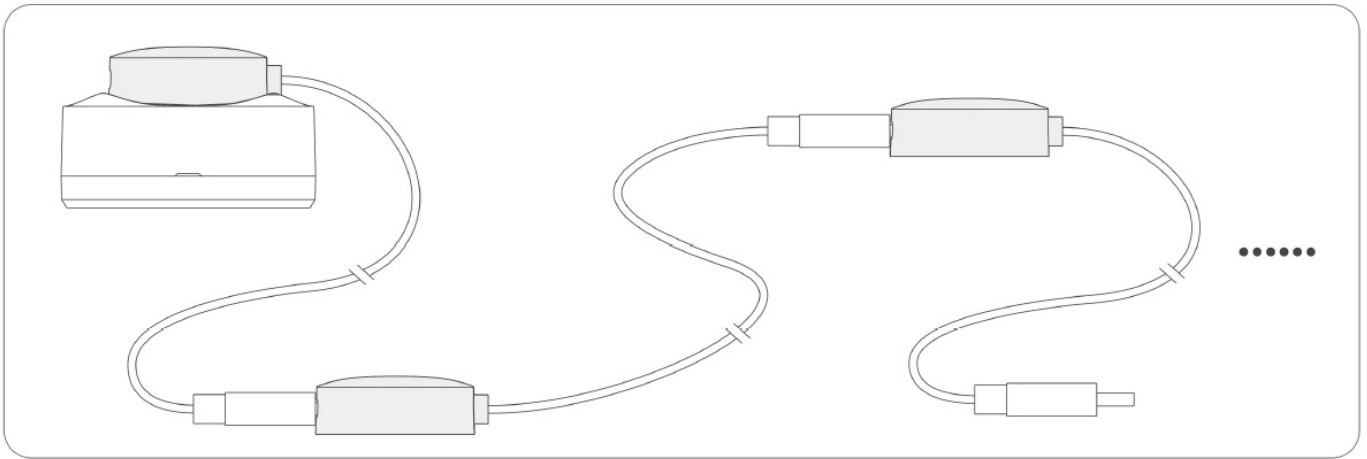
- Install the device in the desired place, then press the Pairing button on the device.
- The LED indicator flashes twice means the device and the device under the same Zigbee network (the router device or hub) are in the effective communication distance.

Usage Illustration with Water Leak Detection Cable

- One device paired with one water leak detection cable:



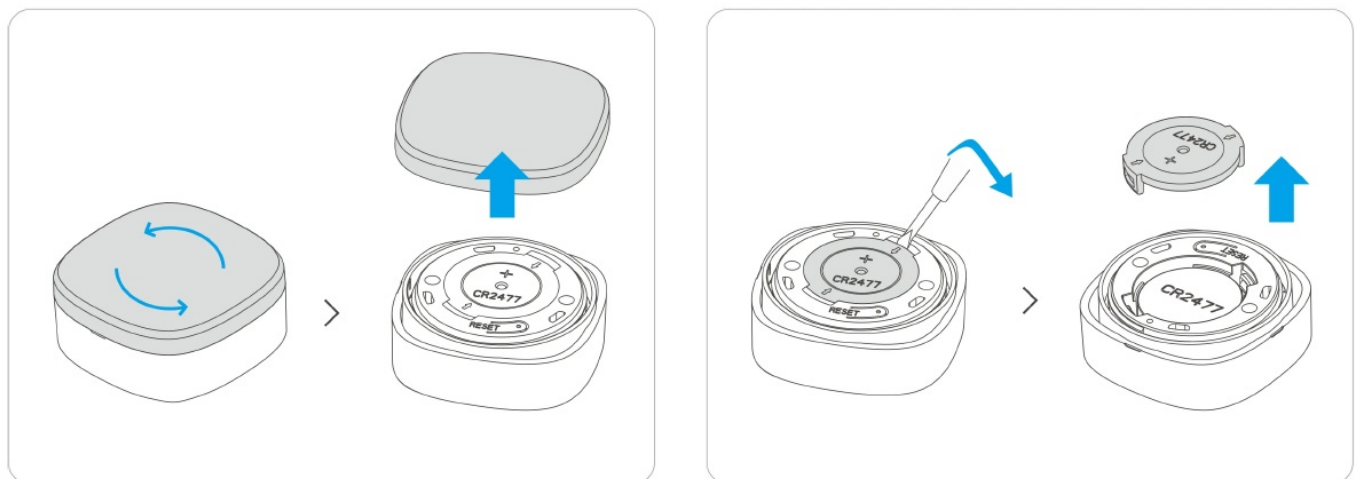
- One device paired with multiple water leak detection cables:



Cautions

1. The water leak detection cable may trigger leak detection in high humidity conditions.
2. After detecting water immersion, please thoroughly dry the water immersion line before reusing it.

Battery Replacement



FCC Compliance Statement

This device complies with part 15 of the FCC Rules. Operation is subject to the following two conditions:

1. This device may not cause harmful interference, and
2. This device must accept any interference received, including interference that may cause undesired operation.

Changes or modifications not expressly approved by the party responsible for compliance could void the user's authority to operate the equipment.

Note: This equipment has been tested and found to comply with the limits for a Class B digital device, according to part 15 of the FCC Rules.

These limits are designed to provide reasonable protection against harmful interference in a residential installation. This equipment generates, uses, and can radiate radio frequency energy and, if not installed and used under the instructions, may cause harmful interference to radio communications. However, there is no guarantee that interference will not occur in a particular installation. If this equipment does cause harmful interference to radio or

television reception, which can be determined by turning the equipment off and on, the user is encouraged to try to correct the interference by one or more of the following measures:

- Reorient or relocate the receiving antenna.
- Increase the separation between the equipment and the receiver.
- Connect the equipment to an outlet on a circuit different from that to which the receiver is connected.
- Consult the dealer or an experienced radio/TV technician for help.

FCC Radiation Exposure Statement

This equipment complies with FCC radiation exposure limits set forth for an uncontrolled environment.

This equipment should be installed and operated with a minimum distance of 20 cm between the radiator and your body.

This transmitter must not be co-located or operating in conjunction with any other antenna or transmitter.

ISED Notice

This device contains license-exempt transmitter(s)/receiver(s) that comply with Innovation, Science, and Economic Development Canada's license-exempt RSS(s). Operation is subject to the following two conditions:

1. This device may not cause interference.
2. This device must accept any interference, including interference that may cause undesired operation of the device.

This Class B digital apparatus complies with Canadian ICES-003(B).

This device complies with RSS-247 of Industry Canada. Operation is subject to the condition that this device does not cause harmful interference.

ISED Radiation Exposure Statement

- This equipment complies with ISED radiation exposure limits set forth for an uncontrolled environment.
- This equipment should be installed and operated with a minimum distance of 20 cm between the radiator and your body.
- This transmitter must not be co-located or operating in conjunction with any other antenna or transmitter.

SAR Warning

- Under normal use conditions, this equipment should keep a separation distance of at least 20 cm between the antenna and the body of the user.

EU Declaration of Conformity

Hereby, Shenzhen Sonoff Technologies Co., Ltd. declares that the radio equipment type SNZB- 05P complies with Directive 2014/53/EU. The full text of the EU Declaration of Conformity is available at the following internet address: <https://sonoff.tech/compliance/>.

For CE frequency

- EU Operating Frequency Range:

- Zigbee : 2405–2480 MHz
- EU Output Power:
- Zigbee≤10dBm

WEEE Disposal and Recycling Information

WEEE Disposal and Recycling Information All products bearing this symbol are waste electrical and electronic equipment (WEEE as in directive 2012/19/EU) which should not be mixed with unsorted household waste. Instead, you should protect human health and the environment by handing over your waste equipment to a designated collection point for the recycling of waste electrical and electronic equipment, appointed by the government or local authorities. Correct disposal and recycling will help prevent potential negative consequences to the environment and human health. Please contact the installer or local authorities for more information about the location as well as the terms and conditions of such collection points.



- Do not ingest battery, Chemical Burn Hazard.
- This product contains a coin/button cell battery.
- If the coin/button cell battery is swallowed, it can cause severe internal burns in just 2 hours and can lead to death.
- Keep new and used batteries away from children.
- If the battery compartment does not close securely, stop using the product and keep it away from children.
- If you think batteries might have been swallowed or placed inside any part of the body, seek immediate medical attention.
- Replacement of a battery with an incorrect type that can defeat a safeguard (for example, in the case of some lithium battery types).
- Disposal of a battery into a fire or a hot oven, or mechanically crushing or cutting of a battery, that can result in an explosion.
- Leaving a battery in an extremely high temperature surrounding environment can result in an explosion or the leakage of flammable liquid or gas.
- A battery subjected to extremely low air pressure may result in an explosion or the leakage of flammable liquid or gas.



UL 4200A compliance statement

WARNING

- INGESTION HAZARD: This product contains a button cell or coin battery.
- Aswal we but ce in bai rest cause Internal Chemical
- Burns in as little as 2 hours.

- KEEP new and used batteries OUT OF REACH of CHILDREN.
- Seek immediate medical attention if a battery is suspected to be swallowed or inserted inside any part of the body.



Warning: contains coin battery, The icon must be at least 7 mm in width and 9 mm in height and must be on the product display panel.



- Remove and immediately recycle or dispose of used batteries according to local regulations and keep them away from children. Do NOT dispose of batteries in household trash or incinerate them.
- Even used batteries may cause severe injury or death.
- Call a local poison control center for treatment information.
- Compatible battery type: CR2477
- Nominal battery voltage: 3V===
- Non-rechargeable batteries are not to be recharged.
- Do not force discharge, recharge, disassemble, heat above 60°C, or incinerate. Doing so may result in injury due to venting, leakage, or explosion resulting in chemical burns.
- Ensure the batteries are installed correctly according to polarity(+ and -)•
- Do not mix old and new batteries, different brands, or types of batteries, such as alkaline, carbon-zinc, or rechargeable batteries.
- Remove and immediately recycle or dispose of batteries from equipment not used for an extended time according to local regulations.
- Always completely secure the battery compartment. If the battery compartment does not close securely, stop using the product, remove the batteries, and keep them away from children.


Scatola	Manuale	Borsa	Borsa
PAP 21	PAP 22	CPE 7	LDPE 4
Carta	Carta	Plastica	Plastica
RACCOLTA DIFFERENZIATA			
<p>Verifica le disposizioni del tuo Comune.</p> <p>Separa le componenti e conferiscile in modo corretto.</p>			

CONTACT

Manufacturer: Shenzhen Sonoff Technologies Co., Ltd.

- Address: 3F & 6F, Bldg A, No. 663, Bulong Rd, Shenzhen, Guangdong, China
- ZIP code: 518000 Service email: support@itead.cc
- Website: sonoff.tech Made in China

Documents / Resources

	<p>SONOFF SNZB-05P Zigbee Water Leak Sensor [pdf] User Manual</p> <p>SNZB-05P Zigbee Water Leak Sensor, SNZB-05P, Zigbee Water Leak Sensor, Water Leak Sensor, Leak Sensor, Sensor</p>
---	--

References

- [User Manual](#)

Manuals+ Privacy Policy

This website is an independent publication and is neither affiliated with nor endorsed by any of the trademark owners. The "Bluetooth®" word mark and logos are registered trademarks owned by Bluetooth SIG, Inc. The "Wi-Fi®" word mark and logos are registered trademarks owned by the Wi-Fi Alliance. Any use of these marks on this website does not imply any affiliation with or endorsement.