



SONOFF SNZB-04P Zigbee Door Window Sensor User Guide

[Home](#) » [SonOFF](#) » SONOFF SNZB-04P Zigbee Door Window Sensor User Guide 



SNZB-04P Quick Guide V1.0



Zigbee Door/Window Sensor c

Contents

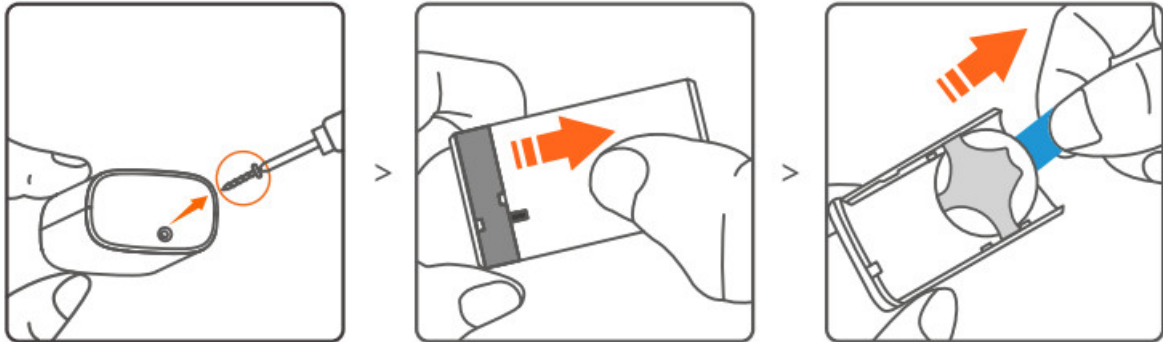
- [1 SNZB-04P Zigbee Door Window Sensor](#)
- [2 FCC compliance statement](#)
- [3 ISED Notice](#)
- [4 SAR Warning](#)
- [5 For CE Frequency:](#)
- [6 EU Declaration of Conformity](#)
- [7 Documents / Resources](#)

SNZB-04P Zigbee Door Window Sensor

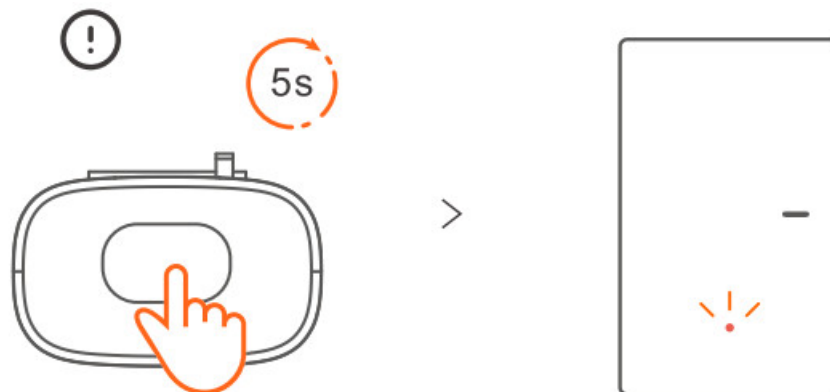
The device can be operated intelligently via working with the SONOFF Zigbee gateway to communicate with other device.

The device can work with other gateways supporting Zigbee 3.0 wireless protocol. Detailed information is in accordance with the final product.

1. Download the eWeLink App & Add SONOFF Zigbee gateway.
2. Power on the device.

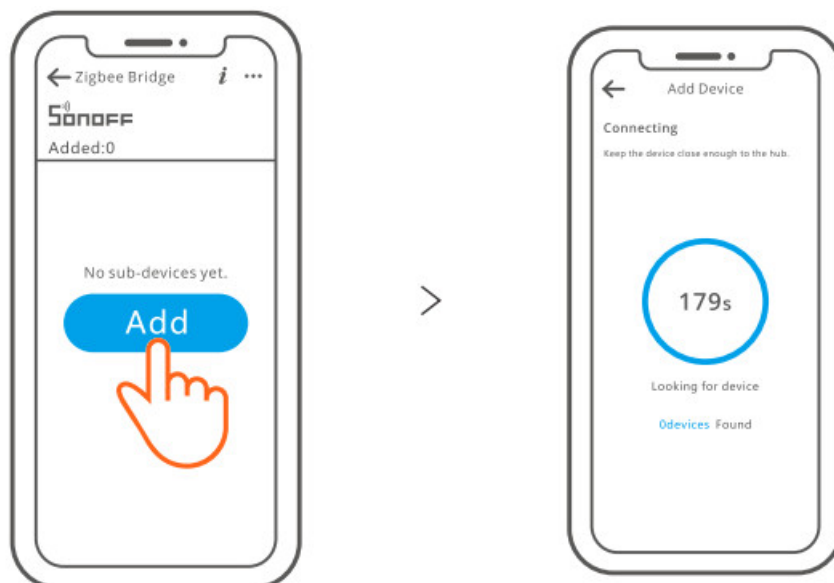


Take out the battery insulation sheet to power on the device. After powering on the device for the first time, it will enter the pairing mode by default and the LED indicator “flashes slowly”.



If the device is the No battery version, please install the battery (CR2477) to power on the device.

3. Add the device to Zigbee Bridge



On the Zigbee gateway main page of the eWeLink App, click “Add” sub-devices and wait for the addition process to complete.



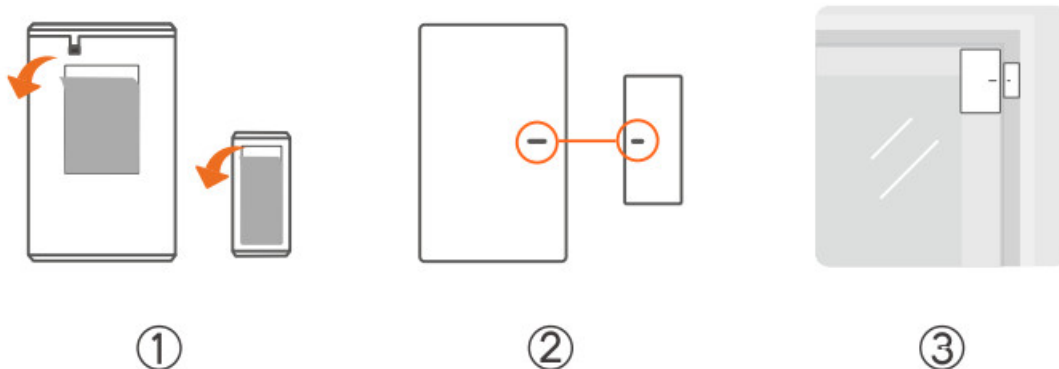
If the device is failed to be added, please move the device closer to the Bridge and add it again.

4. Effective Communication Distance Verification

Install the device in the desired place, then press the Pairing button on the device.

The LED indicator flashes twice means the device and the device under the same Zigbee network (the router device or hub) are in the effective communication distance.

Installation



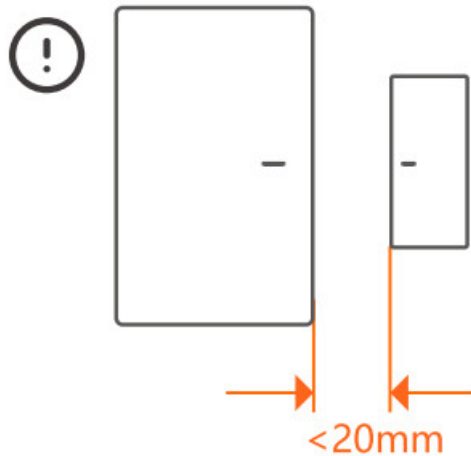
1. Tear off the protective film of the 3M adhesive.

2. Try to align the mark line on the magnet with that on the transmitter during installation.

3. Install them in the opening and closing area separately (such as windows).



The equipment is only suitable for mounting at heights < 2m.



User Manual



<https://www.sonoff.tech/usermanuals>

Scan the QR code or visit the website to learn about the detailed user manual and help.

FCC compliance statement

1. This device complies with part 15 of the FCC Rules. Operation is subject to the following two conditions:
 - (1) This device may not cause harmful interference, and
 - (2) This device must accept any interference received, including interference that may cause undesired operation.
2. Changes or modifications not expressly approved by the party responsible for compliance could void the user's authority to operate the equipment.

Note: This equipment has been tested and found to comply with the limits for a Class B digital device, pursuant to part 15 of the FCC Rules. These limits are designed to provide reasonable protection against harmful interference in a residential installation. This equipment generates, uses and can radiate radio frequency energy and, if not installed and used in accordance with the instructions, may cause harmful interference to radio communications. However, there is no guarantee that interference will not occur in a particular installation. If this equipment does cause harmful interference to radio or television reception, which can be determined by turning the equipment off and on, the user is encouraged to try to correct the interference by one or more of the following measures:

- Reorient or relocate the receiving antenna.
- Increase the separation between the equipment and receiver.
- Connect the equipment into an outlet on a circuit different from that to which the receiver is connected.
- Consult the dealer or an experienced radio/TV technician for help.

FCC Radiation Exposure statement:

This equipment complies with FCC radiation exposure limits set forth for an uncontrolled environment.

This equipment should be installed and operated with minimum distance of 20 cm between the radiator and your body.

This transmitter must not be co-located or operating in conjunction with any other antenna or transmitter.

ISED Notice

This device contains licence-exempt transmitter(s)/receiver(s) that comply with Innovation, Science and Economic Development Canada's licence-exempt RSS(s). Operation is subject to the following two conditions:

1. This device may not cause interference.
2. This device must accept any interference, including interference that may cause undesired operation of the device.

This Class B digital apparatus complies with Canadian ICES-003. This device complies with RSS-247 of Industry Canada. Operation is subject to the condition that this device does not cause harmful interference.

ISED Radiation Exposure Statement

This equipment complies with IC radiation exposure limits set forth for an uncontrolled environment.

This equipment should be installed and operated with minimum distance of 20 cm between the radiator and your body. This transmitter must not be co-located or operating in conjunction with any other antenna or transmitter.

SAR Warning

Under normal use of condition, this equipment should be kept a separation distance of at least 20 cm between the antenna and the body of the user.

For CE Frequency:

Operation frequency Range: 2405—2480MHz(zigbee)

RF Output Power: Zigbee: <10dBm



WEEE Disposal and Recycling Information

All products bearing this symbol are waste electrical and electronic equipment (WEEE as in directive 2012/19/EU) which should not be mixed with unsorted household waste. Instead, you should protect human health and the environment by handing over your waste equipment to a designated collection point for the recycling of waste electrical and electronic equipment, appointed by the government or local authorities. Correct disposal and recycling will help prevent potential negative consequences to the environment and human health. Please contact the installer or local authorities for more information about the location as well as terms and conditions of such collection points.

EU Declaration of Conformity

Hereby, Shenzhen Sonoff Technologies Co., Ltd. declares that the radio equipment type SNZB-04P is in compliance with Directive 2014/53/EU.

The full text of the EU declaration of conformity is available at the following internet address:

<https://sonoff.tech/usermanuals>



Do not ingest battery, Chemical Burn Hazard.

This product contains a coin / button cell battery.

If the coin / button cell battery is swallowed, it can cause severe internal burns in just 2 hours and can lead to death.

Keep new and used batteries away from children.

If the battery compartment does not close securely, stop using the product and keep it away from children.

If you think batteries might have been swallowed or placed inside any part of the body, seek immediate medical attention.

Replacement of a battery with an incorrect type that can defeat a safeguard (for example, in the case of some lithium battery types).

Disposal of a battery into fire or a hot oven, or mechanically crushing or cutting of a battery, that can result in an explosion,

Leaving a battery in an extremely high temperature surrounding environment that can result in an explosion or the leakage of flammable liquid or gas.

A battery subjected to extremely low air pressure that may result in an explosion or the leakage of flammable liquid or gas.

Shenzhen Sonoff Technologies Co., Ltd.

3F & 6F, Bldg A, No. 663, Bulong Rd, Shenzhen, Guangdong, China

ZIP code: 518000

Website: sonoff.tech

Service email: support@itead.cc

MADE IN CHINA




Magasig

SONOFF



Documents / Resources

	SONOFF SNZB-04P Zigbee Door Window Sensor [pdf] User Guide SNZB-04P, 2APN5SNZB04P, SNZB-04P Zigbee Door Window Sensor, Zigbee Door Window S ensor, Door Window Sensor, Window Sensor, Sensor
---	--

[Manuals+](#).