


SONOFF
SONOFF SNZB-04P Door
and Window Sensor



SONOFF SNZB-04P Door and Window Sensor Instruction Manual

[Home](#) » [SonOFF](#) » SONOFF SNZB-04P Door and Window Sensor Instruction Manual 

Contents

- [1 SONOFF SNZB-04P Door and Window Sensor](#)
- [2 Effective Communication Distance Verification](#)
- [3 Installation](#)
- [4 FCC compliance statement](#)
- [5 Documents / Resources](#)
 - [5.1 References](#)
- [6 Related Posts](#)



SONOFF SNZB-04P Door and Window Sensor



Sonoff SNZB-04P Quick Guide V1.1

Introduction

The Sonoff SNZB-04P is a Zigbee Door/Window Sensor designed to enhance your smart home experience. This guide provides step-by-step instructions for installation and usage.

Specifications

Material	105g copperplate paper, four-color printing, accordion fold
Size	Unfolded: 462x65mm, Folded: 42x65mm
Version Date	2023.11.01

Installation Instructions

1. Download and Install the App
Download the eWeLink app from the App Store or Google Play. Create an account or log in if you already have one
2. Pairing the Device
Open the eWeLink app and tap “Add Device”. Follow the on-screen instructions to pair your SNZB-04P with the app.
3. Mounting the Sensor
Use the adhesive tape to mount the sensor on the door or window frame. Ensure the alignment is correct for optimal performance.

Usage

Once installed, the sensor will detect the opening and closing of doors or windows and send notifications to your smartphone via the eWeLink app.

Compliance and Safety

- FCC Compliance Statement: This device complies with part 15 of the FCC Rules.
- ISED Notice: This device complies with ISED license-exempt RSS standard(s).

- EU Declaration of Conformity: Available at <https://sonoff.tech/manuals>

FAQ

1. What should I do if the device fails to pair?

Ensure your smartphone is connected to a 2.4GHz Wi-Fi network and the sensor is within range of the Zigbee hub.

2. How do I reset the sensor?

Press and hold the reset button for 5 seconds until the LED indicator blinks rapidly.

3. Can I use the sensor outdoors?

The sensor is designed for indoor use only. Exposure to outdoor elements may damage the device.

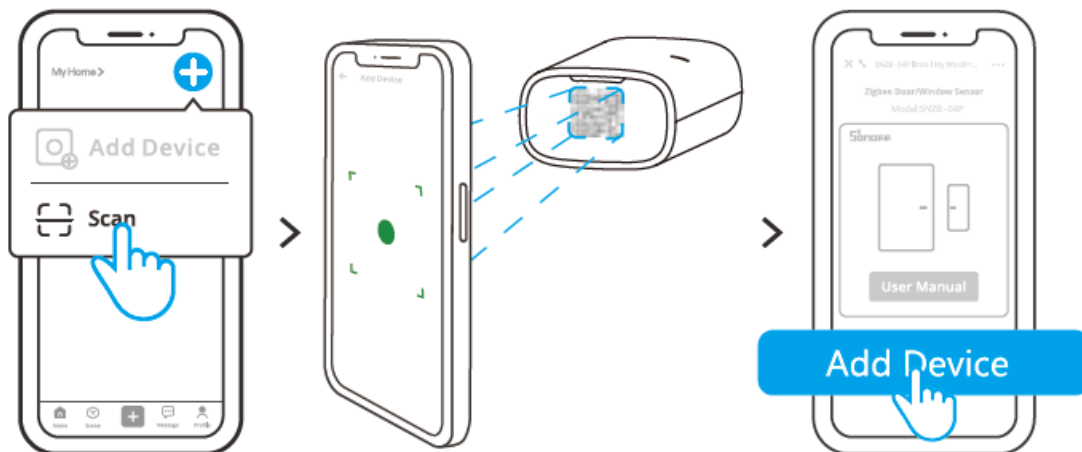
Contact Information

Shenzhen Sonoff Technologies Co., Ltd.

5/F, Bldg 3, Nanshan iPark, No.1001 Xueyuan Ave, Nanshan District, Shenzhen, China

Email: support@sonoff.tech

Download the eWeLink App & Add SONOFF Zigbee gateway.
Scan QR Code to Add Device



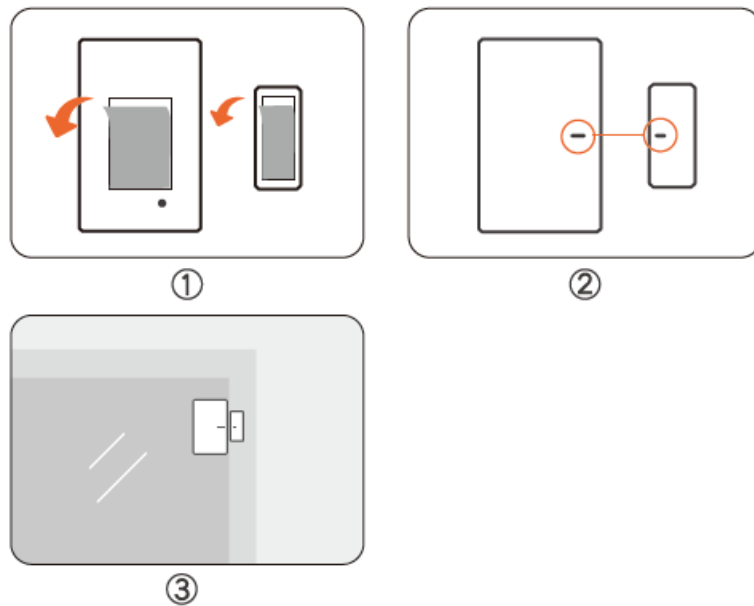
Open the eWeLink App and scan the QR code on the device, then follow the instructions given by the app to proceed.

Note: If the desired page cannot be displayed after scanning the QR code, please power on the device, then click the Zigbee gateway of the device that you want to add in the eWeLink App and select "Add".

Effective Communication Distance Verification

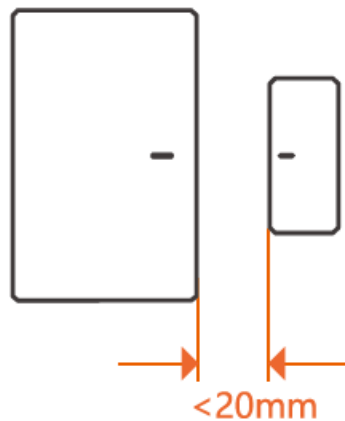
Install the device in the desired place, then press the Pairing button on the device. The LED indicator flashes twice means the device and the device under the same Zigbee network (the router device or hub) are in the effective communication distance.

Installation



1. Tear off the protective film of the 3M adhesive.
2. Try to align the mark line on the magnet with that on the transmitter during installation.
3. install them in the opening and closing area separately(such as windows).

The equipment is only suitable for mounting at heights < 2 m.



Make sure the installation gap is less than 20mm when the door or the window is closed.

The device can work with other gateways supporting Zigbee 3.0 wireless protocol. Detailed information is in accordance with the final product.

User Manual

<https://sonoff.tech/usermanuals>

Enter the website provided above to view the User Manual for the device.

FCC compliance statement

1. This device complies with part 15 of the FCC Rules. Operation is subject to the following two conditions:
 1. This device may not cause harmful interference, and
 2. This device must accept any interference received, including interference that may cause undesired

operation.

2. Changes or modifications not expressly approved by the party responsible for compliance could void the user's authority to operate the equipment.

Note: This equipment has been tested and found to comply with the limits for a Class B digital device, pursuant to part 15 of the

FCC Rules. These limits are designed to provide reasonable protection against harmful interference in a residential installation. This equipment generates, uses and can radiate radio frequency energy and, if not installed and used in accordance with the instructions, may cause harmful interference to radio communications. However, there is no guarantee that interference will not occur in a particular installation. If this equipment does cause harmful interference to radio or television reception, which can be determined by turning the equipment off and on, the user is encouraged to try to correct the interference by one or more of the following measures:

- Reorient or relocate the receiving antenna.
- Increase the separation between the equipment and receiver.
- Connect the equipment into an outlet on a circuit different from that to which the receiver is connected.
- Consult the dealer or an experienced radio/TV technician for help.

FCC Radiation Exposure statement:

This equipment complies with FCC radiation exposure limits set forth for an uncontrolled environment.

This equipment should be installed and operated with minimum distance of 20 cm between the radiator and your body.

This transmitter must not be co-located or operating in conjunction with any other antenna or transmitter.

ISED Notice

This device contains licence-exempt transmitter(s)/receiver(s) that comply with Innovation, Science and Economic Development Canada's licence-exempt RSS(s).

Operation is subject to the following two conditions:

1. This device may not cause interference.
2. This device must accept any interference, including interference that may cause undesired operation of the device.

This Class B digital apparatus complies with Canadian ICES-003(B).

- This device complies with RSS-247 of Industry Canada. Operation is subject to the condition that this device does not cause harmful interference.
- This equipment complies with ISED radiation exposure limits set forth for an uncontrolled environment.
- This equipment should be installed and operated with minimum distance of 20 cm between the radiator and your body.
- This transmitter must not be co-located or operating in conjunction with any other antenna or transmitter.

SAR Warning

Under normal use of condition, this equipment should be kept a separation distance of at least 20 cm between the antenna and the body of the user.



WEEE Disposal and Recycling Information

All products bearing this symbol are waste electrical and electronic equipment (WEEE as in directive 2012/19/EU) which should not be mixed with unsorted household waste. Instead, you should protect human health and the environment by handing over your waste equipment to a designated collection point for the recycling of waste electrical and electronic equipment, appointed by the government or local authorities. Correct disposal and recycling will help prevent potential negative consequences to the environment and human health. Please contact the installer or local authorities for more information about the location as well as terms and conditions of such collection points.

EU Declaration of Conformity

Hereby, Shenzhen SonoffTechnologies Co., Ltd. declares that the radio equipment type SNZB-04P is in compliance with Directive 2014/53/EU. The full text of the EU declaration of conformity is available at the following internet address: <https://sonoff.tech/compliance/>

For CE Frequency:

- Operation frequency Range: Zigbee: <10dBm
- RF Output Power: Zigbee: 2405-2480MHz
- Do not ingest battery, Chemical Burn Hazard.
- This product contains a coin / button cell battery.
- Keep new and used batteries away from children.
- If the battery compartment does not close securely, stop using the product and keep it away from children.
- If you think batteries might have been swallowed or placed inside any part of the body, seek immediate medical attention.
- Replacement of a battery with an incorrect type that can defeat a safeguard (for example, in the case of some lithium battery types).
- Disposal of a battery into fire or a hot oven, or mechanically crushing or cutting of a battery, that can result in an explosion.
- Leaving a battery in an extremely high temperature surrounding environment that can result in an explosion or the leakage of flammable liquid or gas.
- A battery subjected to extremely low air pressure that may result in an explosion or the leakage of flammable liquid or gas.

Shenzhen SonoffTechnologies Co., Ltd.

3F & 6F, Bldg A, No. 663, Bulong Rd, Shenzhen, Guangdong, China

ZIP code: 518000

Website: sonoff.tech

Service email: support@itead.cc

MADE IN CHINA

Documents / Resources



[SONOFF SNZB-04P Door and Window Sensor](#) [pdf] Instruction Manual
SNZB-04P Door and Window Sensor, SNZB-04P, Door and Window Sensor, Window Sensor, Sensor

References

- [User Manual](#)

[Manuals+](#), [Privacy Policy](#)

This website is an independent publication and is neither affiliated with nor endorsed by any of the trademark owners. The "Bluetooth®" word mark and logos are registered trademarks owned by Bluetooth SIG, Inc. The "Wi-Fi®" word mark and logos are registered trademarks owned by the Wi-Fi Alliance. Any use of these marks on this website does not imply any affiliation with or endorsement.