



# SONOFF SNZB-04 ZigBee Door and Window Sensor User Guide

[Home](#) » [SonOFF](#) » SONOFF SNZB-04 ZigBee Door and Window Sensor User Guide 

## Contents

- [1 SONOFF SNZB-04 ZigBee Door and Window Sensor](#)
- [2 Download the eWeLink App](#)
- [3 Take out the battery insulation sheet.](#)
- [4 Add sub-devices](#)
- [5 installation](#)
- [6 User Manual](#)
- [7 FCC compliance statement](#)
- [8 WEEE Warning](#)
- [9 Documents / Resources](#)



## SONOFF SNZB-04 ZigBee Door and Window Sensor

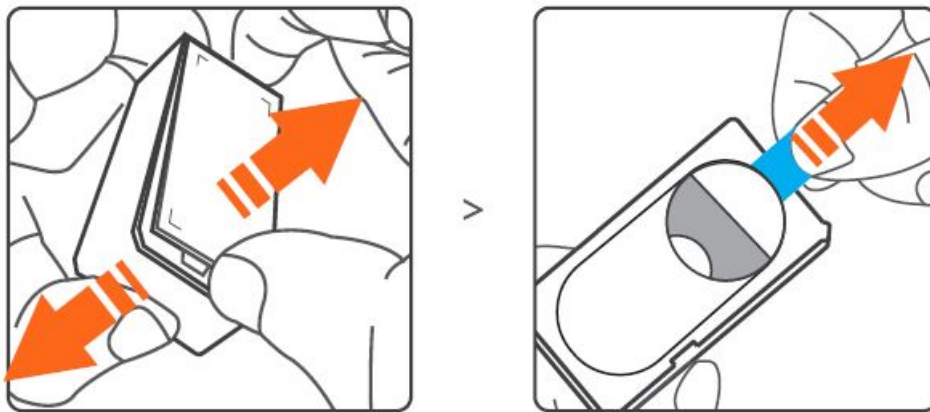


The device can be operated intelligently via working with the SONOFF ZigBee Bridge to communicate with other devices. The device can work with other gateways supporting ZigBee 3.0 wireless protocol. Detailed information is in accordance with the final product.

### Download the eWeLink App



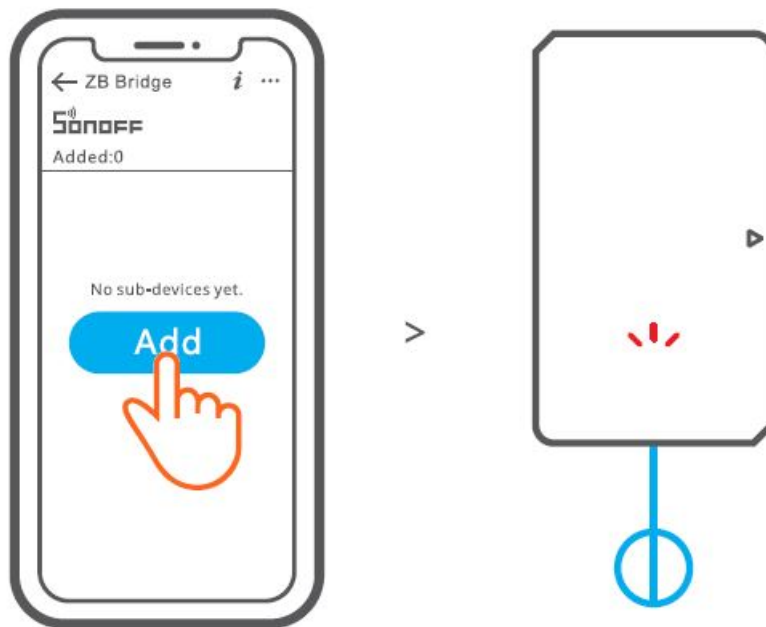
Take out the battery insulation sheet.



The device is available in battery and non-battery versions

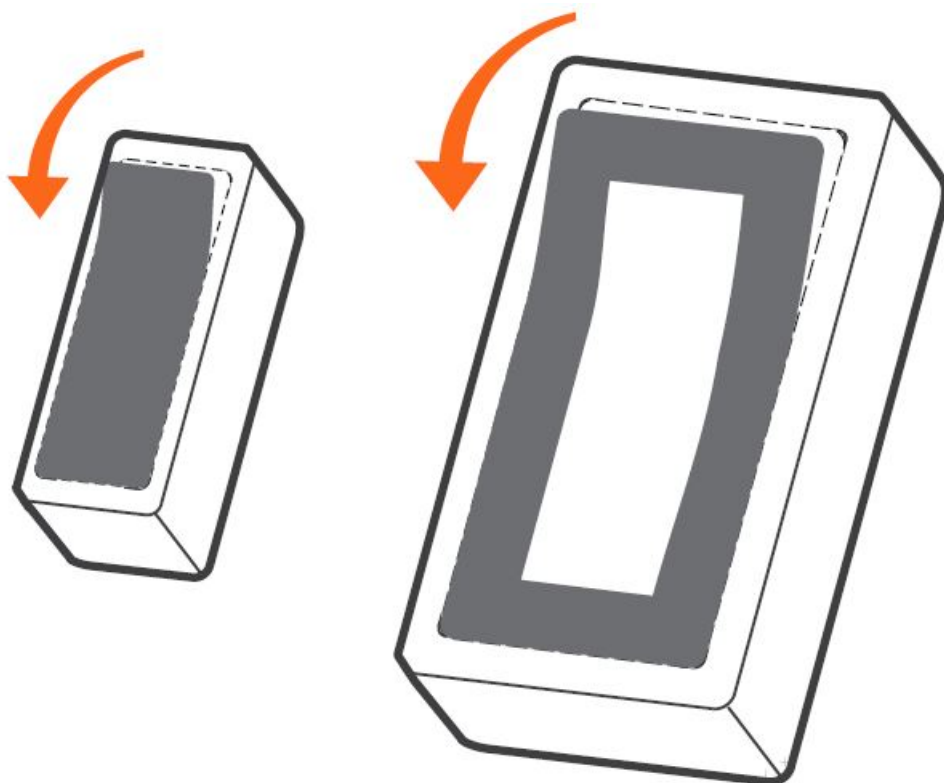
### Add sub-devices

Connect the gateway before adding the sub-device.

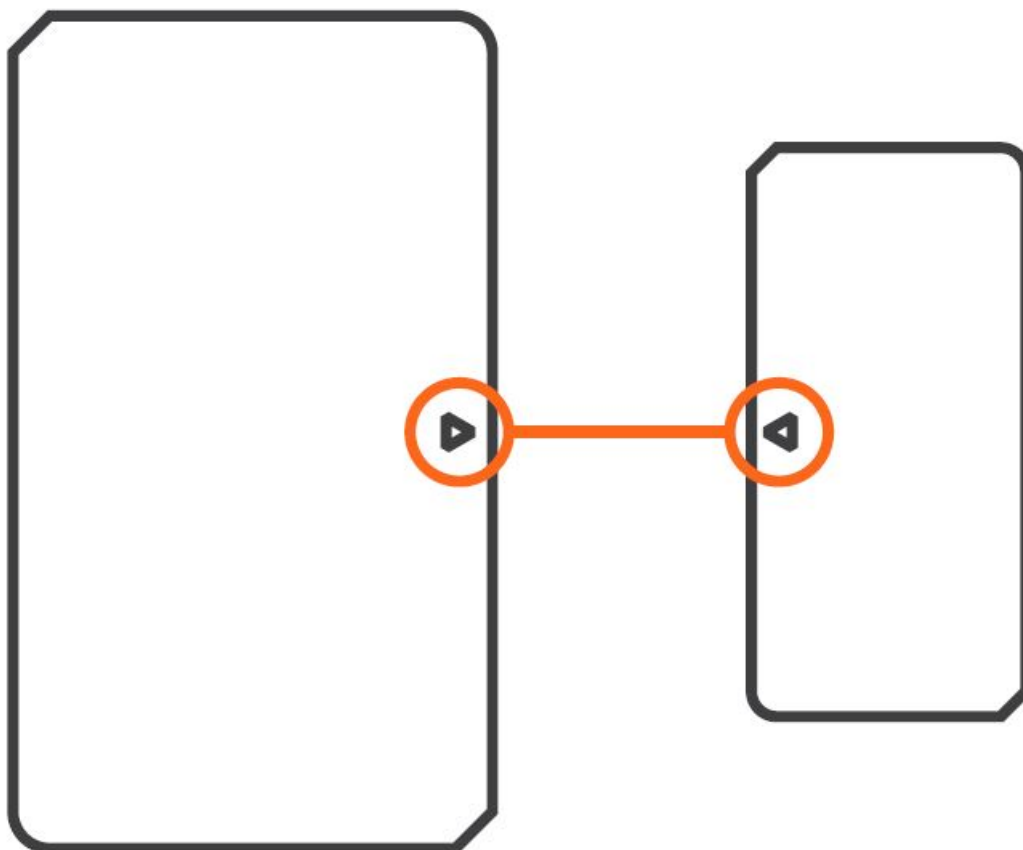


Access eWeLink APP, select the Bridge that you want to connect, and tap “Add” to add a sub-device. Then long press reset button on the device for 5s until the LED indicator flashes three times, which means the device has entered the pairing mode, and be patient until pairing completes. If the device is failed to be added, please move the device closer to the Bridge and add it again.

## installation

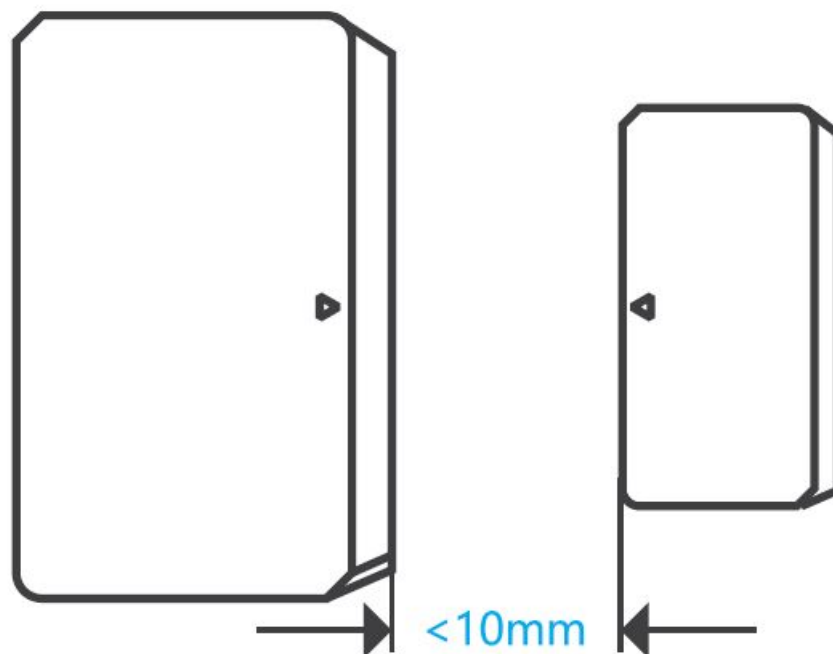


Tear off the protective film of the 3M adhesive.



Try to align the mark line on the magnet with that on the transmitter during installation.

**Install them in the opening and closing area separately.**



Make sure the installation gap is less than 10mm when the door or the window is closed.

**User Manual**



Scan the QR code or visit the website to learn about the detailed user manual and help

### **FCC compliance statement**

1. This device complies with part 15 of the FCC Rules. Operation is subject to the following two conditions:
  - This device may not cause harmful interference, and
  - This device must accept any interference received, including interference that may cause undesired operation.
2. Changes or modifications not expressly approved by the party responsible for compliance could void the user's authority to operate the equipment.

**Note:** This equipment has been tested and found to comply with the limits for a Class B digital device, pursuant to part 15 of the FCC Rules. These limits are designed to provide reasonable protection against harmful interference in a residential installation. This equipment generates, uses and can radiate radio frequency energy and, if not installed and used in accordance with the instructions, may cause harmful interference to radio communications. However, there is no guarantee that interference will not occur in a particular installation. If this equipment does cause harmful interference to radio or television reception, which can be determined by turning the equipment off and on, the user is encouraged to try to correct the interference by one or more of the following measures:

- Reorient or relocate the receiving antenna.
- Increase the separation between the equipment and the receiver.
- Connect the equipment to an outlet on a circuit different from that to which the receiver is connected.
- Consult the dealer or an experienced radio/TV technician for help.

### **FCC Radiation Exposure statement:**

This equipment complies with FCC radiation exposure limits set forth for an uncontrolled environment. This equipment should be installed and operated with a minimum distance of 20 cm between the radiator and your body. This transmitter must not be co-located or operating in conjunction with any other antenna or transmitter.

### **ISED Notice**

This device contains license-exempt transmitter(s)/receiver(s) that comply with Innovation, Science, and Economic Development Canada's license-exempt RSS(s). Operation is subject to the following two conditions:

1. This device may not cause interference.
2. This device must accept any interference, including interference that may cause undesired operation of the device.

This Class B digital apparatus complies with Canadian ICES-003(B). This device complies with RSS-247 of Industry Canada. Operation is subject to the condition that this device does not cause harmful interference. ISSED Radiation Exposure Statement This equipment complies with IC radiation exposure limits set forth for an uncontrolled environment. This equipment should be installed and operated with a minimum distance of 20 cm between the radiator and your body. This transmitter must not be co-located or operating in conjunction with any other antenna or transmitter

## **WEEE Warning**

WEEE Disposal and Recycling Information All products bearing this symbol are waste electrical and electronic equipment (as in directive 2012/19/EU) which should not be mixed with unsorted household waste. Instead, you should protect human health and the environment by handing over your waste equipment to a designated collection point for the recycling of waste electrical and electronic equipment, appointed by the government or local authorities. Correct disposal and recycling will help prevent potential negative consequences to the environment and human health. Please contact the installer or local authorities for more information about the location as well as the terms and conditions of such collection points.

## **SAR Warning**

Under normal use of conditions, this equipment should be kept a separation distance of at least 20 cm between the antenna and the body of the user.

## **EU Declaration of Conformity**

Hereby, Shenzhen Sonoff Technologies Co., Ltd. declares that the radio equipment type SNZB-04 is in compliance with Directive 2014/53/EU. The full text of the EU declaration of Conformity is available at the following internet address: <https://sonoff.tech/usermanuals>.

## **EU Operating Frequency Range:**

**Zigbee:** 2405-2480MHz

**Output Power:** 4.79dBm

1. Do not ingest battery, Chemical Burn Hazard.
2. This product contains a coin/button cell battery.
3. If the coin/button cell battery is swallowed, it can cause severe internal burns in just 2 hours and can lead to death.
4. Keep new and used batteries away from children.
5. If the battery compartment does not close securely, stop using the product and keep it away from children.
6. If you think batteries might have been swallowed or placed inside any part of the body, seek immediate medical attention.
7. Replacement of a battery with an incorrect type can defeat a safeguard (for example, in the case of some lithium battery types).
8. Disposal of a battery into a fire or a hot oven, or mechanically crushing or cutting of a battery, that can result in an explosion.
9. Leaving a battery in an extremely high temperature surrounding environment that can result in an explosion or the leakage of flammable liquid or gas.
10. A battery subjected to extremely low air pressure may result in an explosion or the leakage of flammable liquid

or gas.


Scatola	Manuale
PAP 21	PAP 22
Carta	Carta
RACCOLTA DIFFERENZIATA	
Verifica le disposizioni del tuo Comune. Separa le componenti e conferiscile in modo corretto.	

Shenzhen Sonoff Technologies Co., Ltd. 1001, BLDG8, Lianhua Industrial Park, Shenzhen, GD, China

**ZIP code:** 518000

**Website:** [sonoff.tech](http://sonoff.tech). MADE IN CHINA

**Documents / Resources**

	<p><a href="#">SONOFF SNZB-04 ZigBee Door and Window Sensor</a> [pdf] User Guide</p> <p>SNZB-04 ZigBee Door and Window Sensor, SNZB-04, ZigBee Door and Window Sensor, Window Sensor, Sensor</p>
--	--

[Manuals+](#).