



# SONOFF SNZB-03 ZigBee Smart Motion Sensor User Guide

[Home](#) » [SonOFF](#) » SONOFF SNZB-03 ZigBee Smart Motion Sensor User Guide 



SNZB-03 ZigBee Smart Motion Sensor  
User Guide



**Works with everything**

The device can be operated intelligently by working with the SONOFF ZigBee Bridge to communicate with other devices.



The device can work with other gateways supporting ZigBee 3.0 wireless protocol. Detailed information is in accordance with the final product.

## Contents

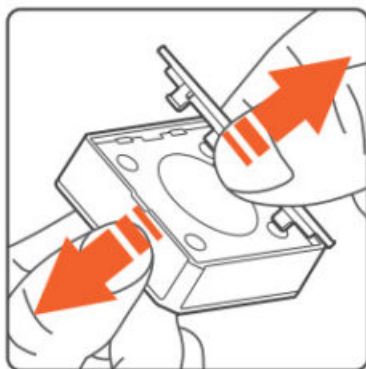
- 1 Download APP
- 2 Pull out the battery insulation sheet
- 3 Add sub-devices
- 4 User Manual
- 5 Documents / Resources
- 6 Related Posts

## Download APP

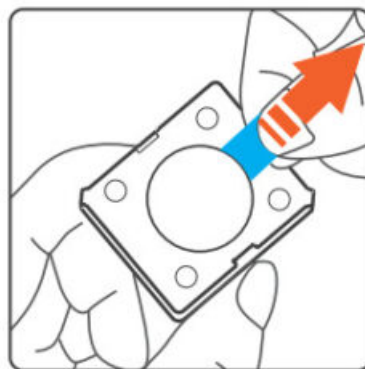


<http://app.coolkit.cc/dl.html>

## Pull out the battery insulation sheet



>



## Add sub-devices

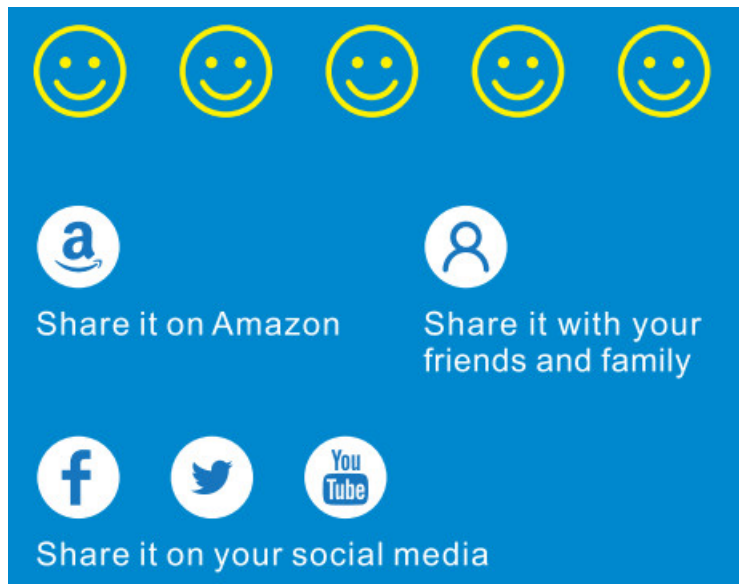


Connect the Bridge before adding the sub-device.

## LIKE IT!

Glad to know you are satisfied with SONOFF products.

It would mean a lot to us if you can take a minute to share your buying experience.



Get the latest news by following us:  
New arrival Promotion How-to videos

### HAVE A PROBLEM?

We are so sorry for the inconvenience caused by the product. Please contact us for help via the email address below.



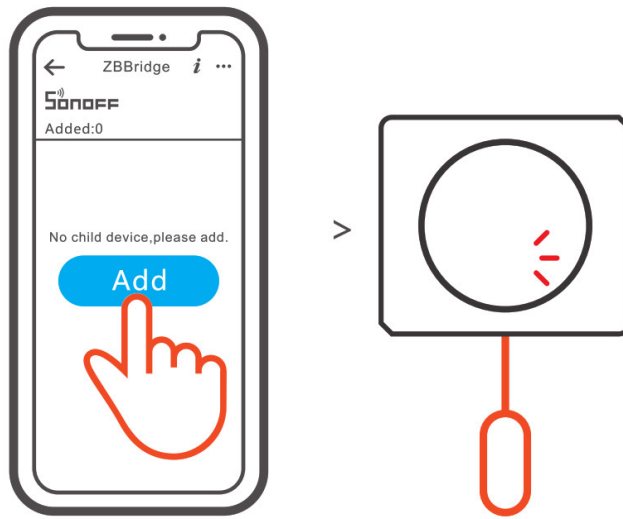
[support@itead.cc](mailto:support@itead.cc)

We will get back to you as soon as possible.



[https://www.youtube.com/channel/UC1EsS\\_wR0\\_isqSbbN-ZM8GA](https://www.youtube.com/channel/UC1EsS_wR0_isqSbbN-ZM8GA)

<https://www.facebook.com/SONOFF.official/>



Access eWeLink APP, select the Bridge that you want to connect and tap “Add” to add a sub-device. Then long-press the reset button on the device for 5s until the LED indicator flashes three times, which means the device has entered the pairing mode, and be patient until pairing completes.



If the addition failed, move the sub-device closer to the Bridge and try again.

## User Manual



<https://www.sonoff.tech/usermanuals>

Scan the QR code or visit the website to learn about the detailed user manual and help.

## FCC Warning

Changes or modifications not expressly approved by the party responsible for compliance could avoid the user's authority to operate the equipment.

This device complies with part 15 of the FCC Rules. Operation is subject to the following two conditions: (1) This device may not cause harmful interference, and (2) this device must accept any interference received, including interference that may cause undesired operation.

## FCC Radiation Exposure Statement:

This equipment complies with FCC radiation exposure limits set forth for an uncontrolled environment. This equipment should be installed and operated with a minimum distance of 20cm between the radiator & your body. This transmitter must not be co-located or operating in conjunction with any other antenna or transmitter.

## Note:

This equipment has been tested and found to comply with the limits for a Class B digital device, pursuant to part 15 of the FCC Rules. These limits are designed to provide reasonable protection against harmful interference in a residential installation. This equipment generates, uses and can radiate radio frequency energy and, if not installed and used in accordance with the instructions, may cause harmful interference to radio communications. However, there is no guarantee that interference will not occur in a particular installation. If this equipment does

cause harmful interference to radio or television reception, which can be determined by turning the equipment off and on, the user is encouraged to try to correct the interference by one or more of the following measures:

- Reorient or relocate the receiving antenna.
- Increase the separation between the equipment and receiver.
- Connect the equipment into an outlet on a circuit different from that to which the receiver is
- Consult the dealer or an experienced radio/TV technician for help.

Hereby, Shenzhen Sonoff Technologies Co., Ltd. declares that the radio equipment type SNZB-03 is in compliance with Directive 2014/53/EU. The full text of the EU declaration of conformity is available at the following internet address: <https://www.sonoff.tech/usermanuals>




Shenzhen Sonoff Technologies Co., Ltd. 1001, BLDG8,  
Lianhua Industrial Park, Shenzhen, GD, China  
ZIP code: 518000  
Website: [sonoff.tech](https://www.sonoff.tech)

MADE IN CHINA



## Documents / Resources

	<p><a href="#">SONOFF SNZB-03 ZigBee Smart Motion Sensor</a> [pdf] User Guide SNZB-03, ZigBee Smart Motion Sensor, SNZB-03 ZigBee Smart Motion Sensor</p>
---	---