

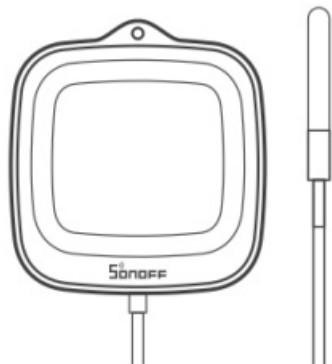


Sonoff SNZB-02L Series Zigbee LCD Smart Thermometer User Guide

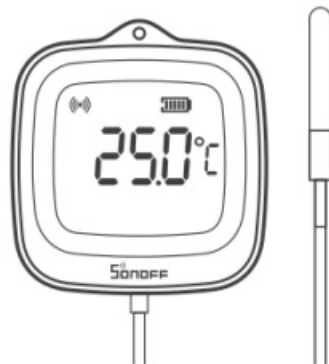
[Home](#) » [SonOFF](#) » Sonoff SNZB-02L Series Zigbee LCD Smart Thermometer User Guide 



SNZB-02L Series
Quick Guide V1.0



SNZB-02L, SNZB-02L-ZS



SNZB-02LD, SNZB-02LD-ZS

Zigbee LCD Smart Thermometer

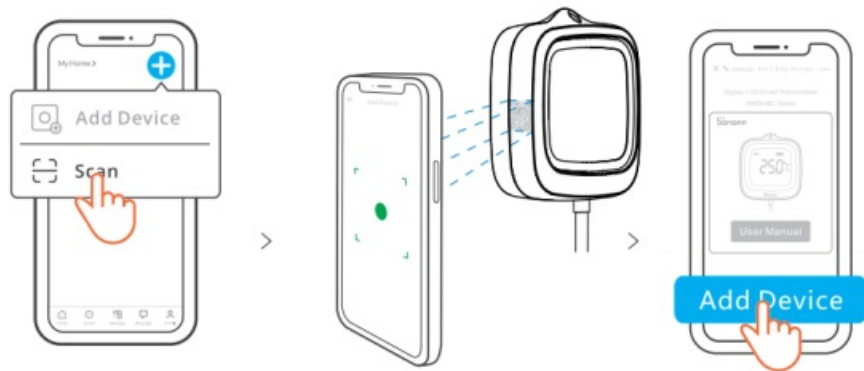
Contents

- 1 SNZB-02L Series Zigbee LCD Smart Thermometer
- 2 Usage
- 3 Replace the Battery
- 4 FCC compliance statement
- 5 Documents / Resources
 - 5.1 References

SNZB-02L Series Zigbee LCD Smart Thermometer

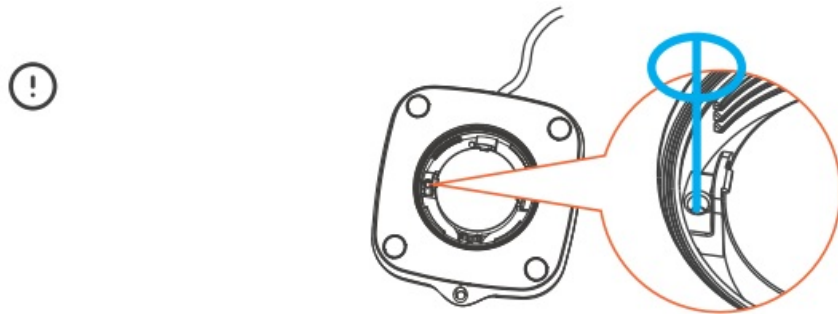
Download the eWeLink App & Add SONOFF Zigbee gateway.

Scan QR Code to Add Device



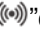
Open the eWeLink App and scan the QR code on the device, then follow the instructions given by the app to proceed.

Note: If the desired page cannot be displayed after scanning the QR code, please power on the device, then click the Zigbee gateway of the device that you want to add in the eWeLink App and select “Add”.



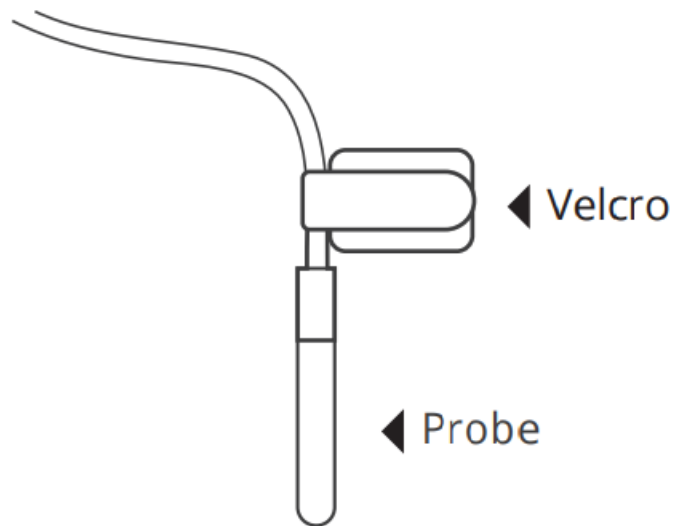
Use a card pin to double-click the device button to switch the temperature unit.

Effective Communication Distance Verification

Place the device in your desired place and short press the device's button, then the signal icon “” on the screen will flash twice, which means the device and the device (router device or gateway) under the same Zigbee network is in the effective communication distance.

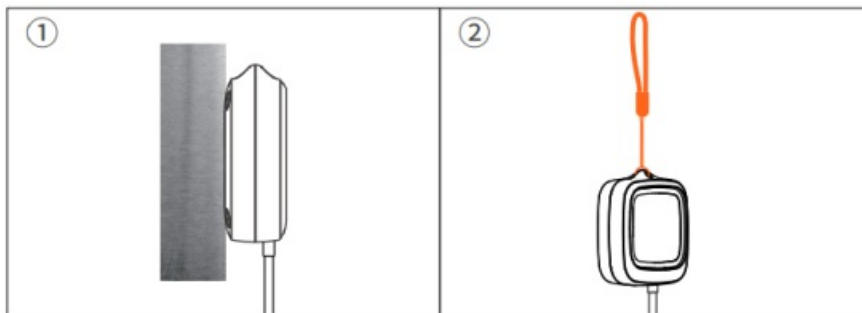
Usage

4-1 Fix the probe



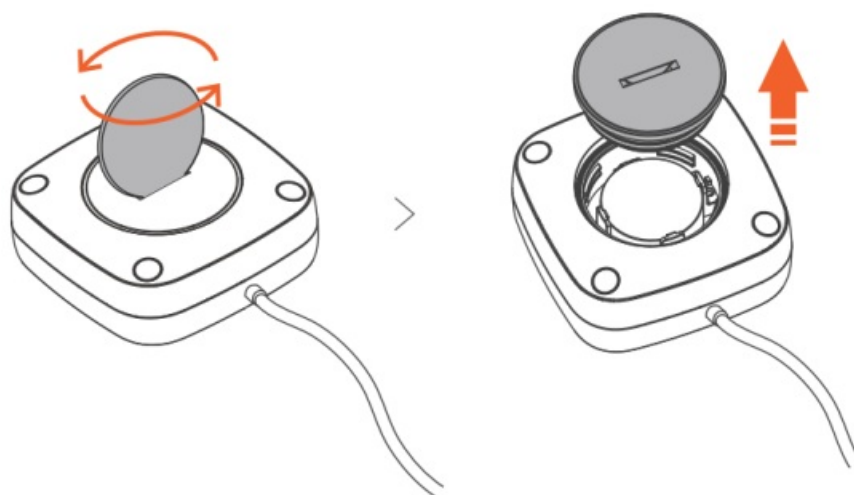
Tear off the Velcro adhesive and fix the probe to the location where detection is required (for example: in the refrigerator, next to the swimming pool and so on).

4-2 Host placement



- ① Magnetic suction to the metal surface.
- ② Hanging.

Replace the Battery



User Manual

<https://sonoff.tech/usermanuals>

Enter the website provided above to view the User Manual for the device.

Scatola	Manuale	Borsa	Borsa
PAP 21	PAP 22	CPE 7	LDPE 4
Carta	Carta	Plastica	Plastica

RACCOLTA DIFFERENZIATA



It is suitable for safe use only when the altitude is below 2000m. Security risks may arise when the altitude is above 2000m.

WEEE Disposal and Recycling Information



All products bearing this symbol are waste electrical and electronic equipment (WEEE as in directive 2012/19/EU) which should not be mixed with unsorted household waste. Instead, you should protect human health and the environment by handing over your waste equipment to a designated collection point for the recycling of waste electrical and electronic equipment, appointed by the government or local authorities. Correct disposal and recycling will help prevent potential negative consequences to the environment and human health. Please contact the installer or local authorities for more information about the location as well as terms and conditions of such collection points.

EU Declaration of Conformity

Hereby, Shenzhen Sonoff Technologies Co., Ltd. declares that the radio equipment type SNZB-02W, SNZB-02W-ZS, SNZB-02WD, SNZB-02WD-ZS is in compliance with Directive 2014/53/EU. The full text of the EU declaration of conformity is available at the following internet address: <https://sonoff.tech/compliance/>

For CE Frequency

EU Operating Frequency Range

Zigbee: 2405-2480MHz

EU Output Power

Zigbee ≤ 20dBm

FCC compliance statement

1. This device complies with part 15 of the FCC Rules. Operation is subject to the following two conditions:

(1) This device may not cause harmful interference, and (2) This device must accept any interference received, including interference that may cause undesired operation.

2. Changes or modifications not expressly approved by the party responsible for compliance could void the user's authority to operate the equipment.

Note: This equipment has been tested and found to comply with the limits for a Class B digital device, pursuant to part 15 of the FCC Rules. These limits are designed to provide reasonable protection against harmful interference in a residential installation. This equipment generates, uses and can radiate radio frequency energy and, if not installed and used in accordance with the instructions, may cause harmful interference to radio communications. However, there is no guarantee that interference will not occur in a particular installation. If this equipment does cause harmful interference to radio or television reception, which can be determined by turning the equipment off and on, the user is encouraged to try to correct the interference by one or more of the following measures:

- Reorient or relocate the receiving antenna.
- Increase the separation between the equipment and receiver.
- Connect the equipment into an outlet on a circuit different from that to which the receiver is connected.
- Consult the dealer or an experienced radio/TV technician for help.

FCC Radiation Exposure statement:

This equipment complies with FCC radiation exposure limits set forth for an uncontrolled environment.

This equipment should be installed and operated with minimum distance of 20 cm between the radiator and your body.

This transmitter must not be co-located or operating in conjunction with any other antenna or transmitter.

FCC ID: 2APN5SNZB02L

Warning

Under normal use of condition, this equipment should be kept a separation distance of at least 20 cm between the antenna and the body of the user.

ISED Notice

This device contains licence-exempt transmitter(s)/receiver(s) that comply with Innovation, Science and Economic Development Canada's licence-exempt RSS(s). Operation is subject to the following two conditions:

(1) This device may not cause interference.

(2) This device must accept any interference, including interference that may cause undesired operation of the device.

This Class B digital apparatus complies with Canadian ICES-003(B).

This device complies with RSS-247 of Industry Canada. Operation is subject to the condition that this device does not cause harmful interference.

This equipment complies with ISED radiation exposure limits set forth for an uncontrolled environment.

This equipment should be installed and operated with minimum distance of 20 cm between the radiator and your body.

This transmitter must not be co-located or operating in conjunction with any other antenna or transmitter.


IC: 29127-SNZB02L

UL 4200A compliance statement**WARNING**

INGESTION HAZARD: This product contains a button cell or coin battery.
DEATH or serious injury can occur if ingested.
A swallowed button cell or coin battery can cause Internal Chemical Burns in as little as 2 hours.
KEEP new and used batteries OUT OF REACH of CHILDREN.
Seek immediate medical attention if a battery is suspected to be swallowed or inserted inside any part of the body.



Warning: contains coin battery, The icon must be at least 7 mm in width and 9 mm in height and must be on the product display panel.

- Remove and immediately recycle or dispose of used batteries according to local regulations and keep away from children. Do NOT dispose of batteries in household trash or incinerate.
- Even used batteries may cause severe injury or death.
- Call a local poison control center for treatment information .
- Compatible battery type: CR2477
- Nominal battery voltage: 3V 
- Non-rechargeable batteries are not to be recharged.
- Do not force discharge, recharge, disassemble, heat above 60°C or incinerate. Doing so may result in injury due to venting, leakage or explosion resulting in chemical burns.
- Ensure the batteries are installed correctly according to polarity(+ and -)•

- Do not mix old and new batteries, different brands or types of batteries, such as alkaline, carbon-zinc, or rechargeable batteries.
- Remove and immediately recycle or dispose of batteries from equipment not used for an extended period of time according to local regulations.
- Always completely secure the battery compartment. If the battery compartment does not close securely, stop using the product, remove the batteries, and keep them away from children.

WARNING

Do not ingest battery, Chemical Burn Hazard.

This product contains a coin / button cell battery. If the coin / button cell battery is swallowed, it can cause severe internal burns in just 2 hours and can lead to death.

Keep new and used batteries away from children.

If the battery compartment does not close securely, stop using the product and keep it away from children. If you think batteries might have been swallowed or placed inside any part of the body, seek immediate medical attention.

Do not replace a battery with an incorrect type.

Replacement of a battery with an incorrect type that can defeat a safeguard (for example, in the case of some lithium battery types).

Disposal of a battery into fire or a hot oven, or mechanically crushing or cutting of a battery, that can result in an explosion.

Leaving a battery in an extremely high temperature surrounding environment that can result in an explosion or the leakage of flammable liquid or gas.

A battery subjected to extremely low air pressure that may result in an explosion or the leakage of flammable liquid or gas.

Manufacturer: Shenzhen Sonoff Technologies Co., Ltd.

Address: 3F & 6F, Bldg A, No. 663, Bulong Rd, Shenzhen, Guangdong, China

ZIP code: 518000

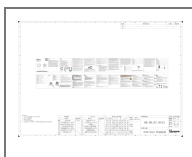
Website: sonoff.tech

Service email: support@itead.cc

MADE IN CHINA



Documents / Resources



[SonoFF SNZB-02L Series Zigbee LCD Smart Thermometer](#) [pdf] User Guide
SNZB-02L Series, SNZB-02L Series Zigbee LCD Smart Thermometer, Zigbee LCD Smart Thermometer, LCD Smart Thermometer, Smart Thermometer

References

-  [MONTESSORIFÖRSKOLAN BAMBINI – MONTESSORIPEDAGOGIK](#)
- [User Manual](#)

[Manuals+](#), [Privacy Policy](#)

This website is an independent publication and is neither affiliated with nor endorsed by any of the trademark owners. The "Bluetooth®" word mark and logos are registered trademarks owned by Bluetooth SIG, Inc. The "Wi-Fi®" word mark and logos are registered trademarks owned by the Wi-Fi Alliance. Any use of these marks on this website does not imply any affiliation with or endorsement.