



SONOFF SNZB-02 ZigBee Smart Home Temperature Humidity Finder User Guide

[Home](#) » [SonOFF](#) » SONOFF SNZB-02 ZigBee Smart Home Temperature Humidity Finder User Guide 

Contents

- [1 SONOFF SNZB-02 ZigBee Smart Home Temperature Humidity Finder](#)
- [2 Operation instruction](#)
- [3 Specifications](#)
- [4 Product Introduction](#)
- [5 Features](#)
- [6 Delete sub-devices](#)
- [7 Installation methods](#)
- [8 Documents / Resources](#)
- [9 Related Posts](#)



SONOFF SNZB-02 ZigBee Smart Home Temperature Humidity Finder



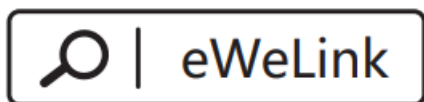
The device can be operated intelligently via working with the SONOFF ZigBee Bridge to communicate with other devices.

NOTE

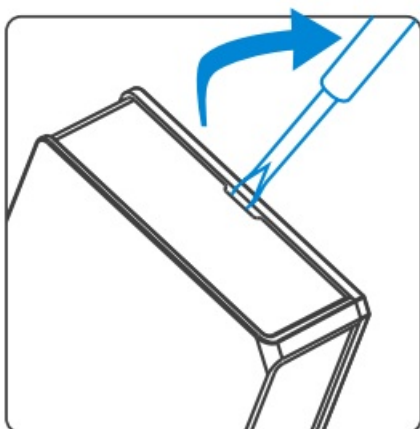
The device can work with other gateways supporting ZigBee 3.0 wireless protocol. Detailed information is in accordance with the final product.

Operation instruction

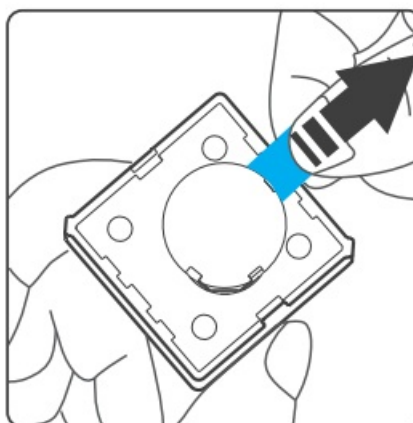
1. Download APP



2. Pull out the battery insulation sheet



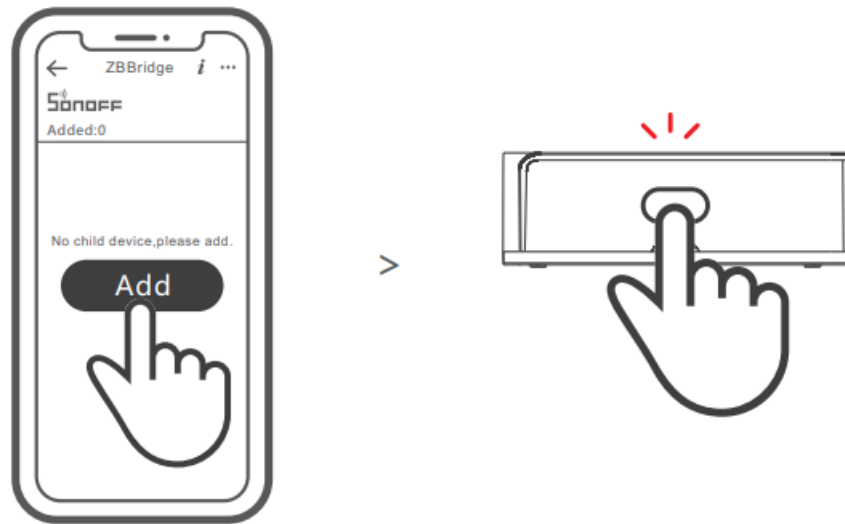
>



3. Add sub-devices

NOTE

Connect the Bridge before adding the sub-device



Access eWeLink APP, select the Bridge that you want to connect, and tap “Add” to add a sub-device. Then long press reset button on the device for 5s until the LED indicator flashes three times, which means the device has entered the pairing mode, and be patient until pairing completes.

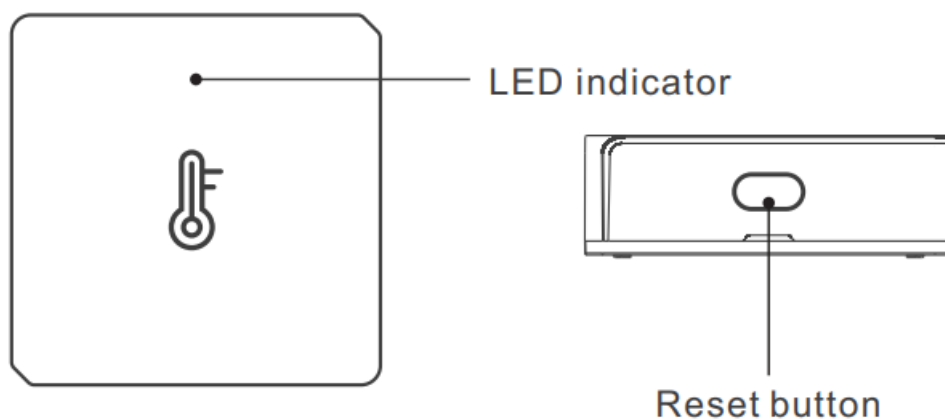
NOTE

If the addition failed, move the sub-device closer to the Bridge and try again.

Specifications

Model	SNZB-02
Battery model	CR2450(3V)
Wireless connection	ZigBee (IEEE 802.15.4)
Working temperature	-10°C~40°C
Working humidity	10-90%RH (non-condensing)
Material	PC
Dimension	43x43x14mm

Product Introduction



Features

SNZB-02 is a ZigBee low-energy temperature & humidity sensor that can be used to monitor the environment temperature and humidity in real time. Connect it with the Bridge and you can create a smart scene to trigger other devices.



- Low-energy



- Temperature and humidity monitoring

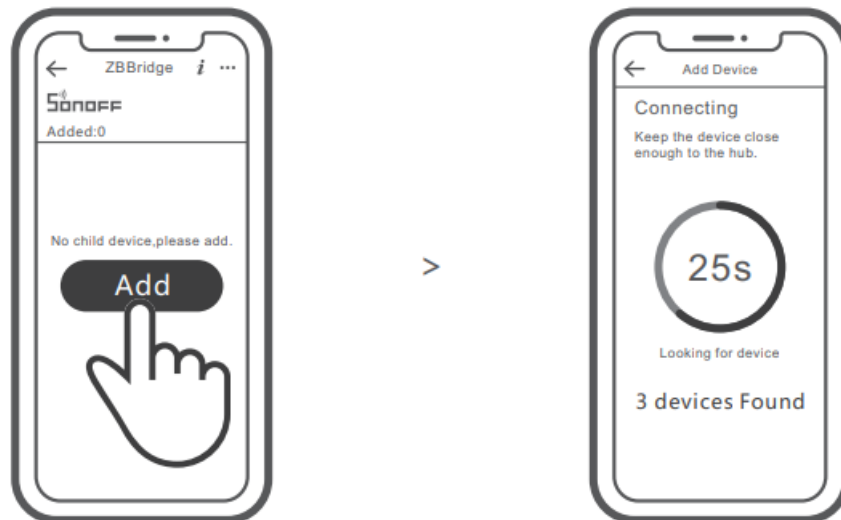


- Low battery notification



- Smart scene

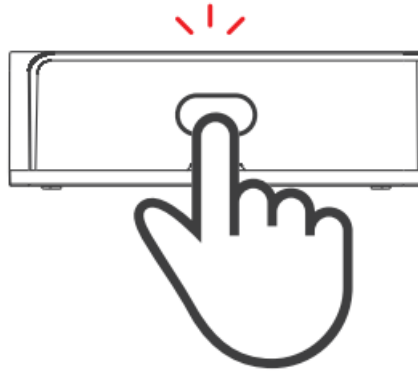
SONOFF ZigBee Bridge supports connecting multiple sub-devices at the same time.



Power the Bridge on, access the Bridge page in the eWeLink APP, and tap “Add”. Then set the sub-device to be paired to the pairing mode, and be patient until the pairing completes.

Delete sub-devices

Long press the reset button on the sub-device for 5s until the LED indicator flashes three times. In this case, the sub-device is deleted from the Bridge successfully.

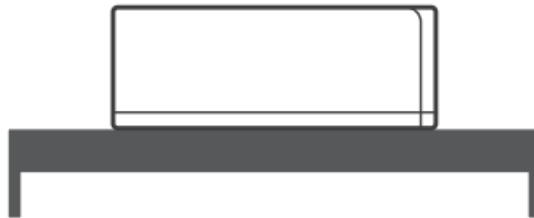


NOTE

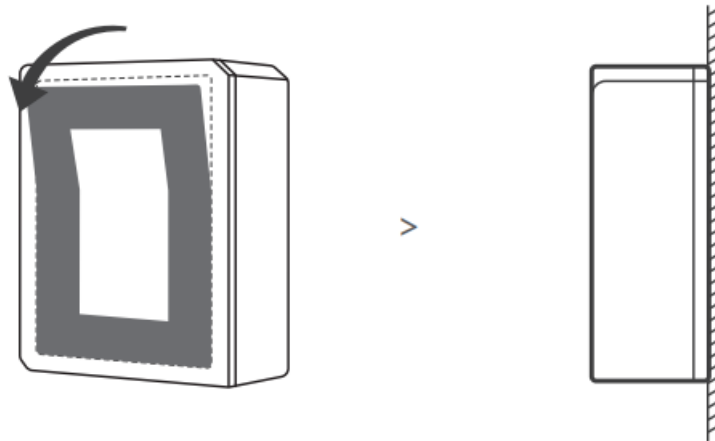
Users can delete sub-devices directly from the sub-device page on APP.

Installation methods

1. Placed on the desktop for use.






2. Tear off the protective film of the 3M adhesives and stick the device on the desired area.



NOTE

- Do not install on a metal surface, otherwise, it will affect the wireless communication distance.
- The device's weight is less than 1 kg. An installation height of less than 2 m is recommended.

Documents / Resources

<div data-bbox="135 107 196 152"> SNZB-02 <small>User Manual V1.0</small></div> <div data-bbox="248 103 279 136"></div> <div data-bbox="165 176 252 259"></div> <div data-bbox="138 277 279 291"><small>Temperature and Humidity Sensor</small></div>	<p>SONOFF SNZB-02 ZigBee Smart Home Temperature Humidity Finder [pdf] User Guide SNZB-02 ZigBee Smart Home Temperature Humidity Finder, SNZB-02, ZigBee Smart Home Temperature Humidity Finder, ZigBee, Smart Home Temperature Humidity Finder, Temperature Finder, Humidity Finder, Home Smart Temperature Humidity Finder</p>
--	---