



Sonoff SNZB-01P Zigbee Wireless Switch User Manual

[Home](#) » [SonOFF](#) » Sonoff SNZB-01P Zigbee Wireless Switch User Manual 

Sonoff SNZB-01P Zigbee Wireless Switch User Manual

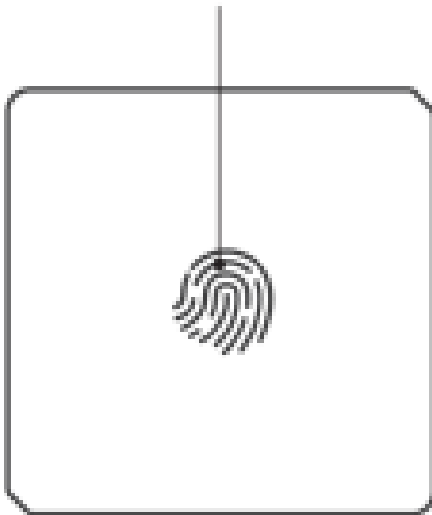


Contents

- [1 Product Introduction](#)
- [2 Features](#)
- [3 Operation instruction](#)
- [4 Installation methods](#)
- [5 Effective Communication Distance Verification](#)
- [6 Specifications](#)
- [7 Button action instruction](#)
- [8 Delete sub-devices](#)
- [9 FCC Warning](#)
- [10 Documents / Resources](#)
- [11 Related Posts](#)

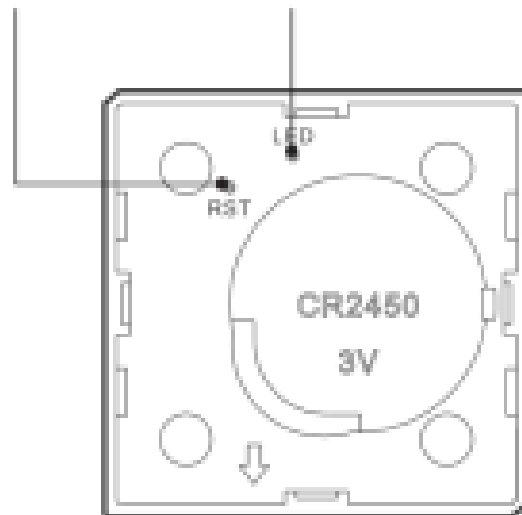
Product Introduction

Manual switch



Reset button

LED indicator



Features

SNZB-01 P is a Zigbee low-energy wireless switch that allows you to move to any place. Peel and stick. Connect it with the Bridge and you can create a smart scene to trigger other devices.

- Low-energy



- Low battery notification

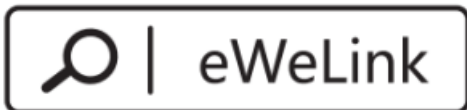


- Smart scene

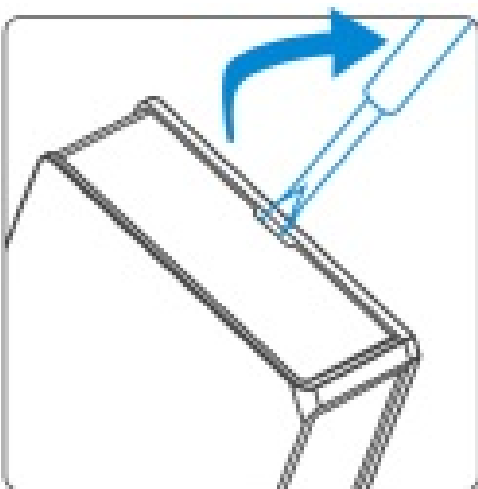


Operation instruction

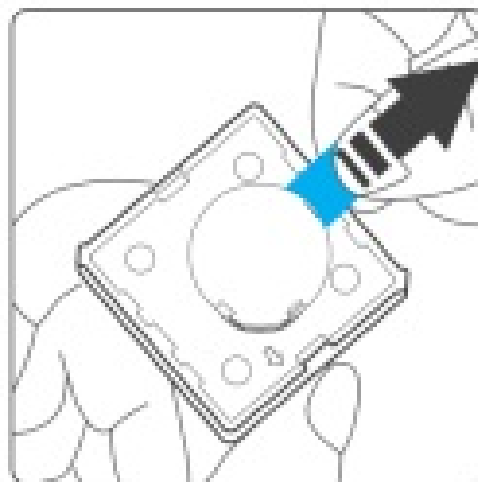
1. Download the eWeLink App



2. Pair SONOFF ZB Bridge to your eWeLink account
3. Pull out the battery instruction sheet.

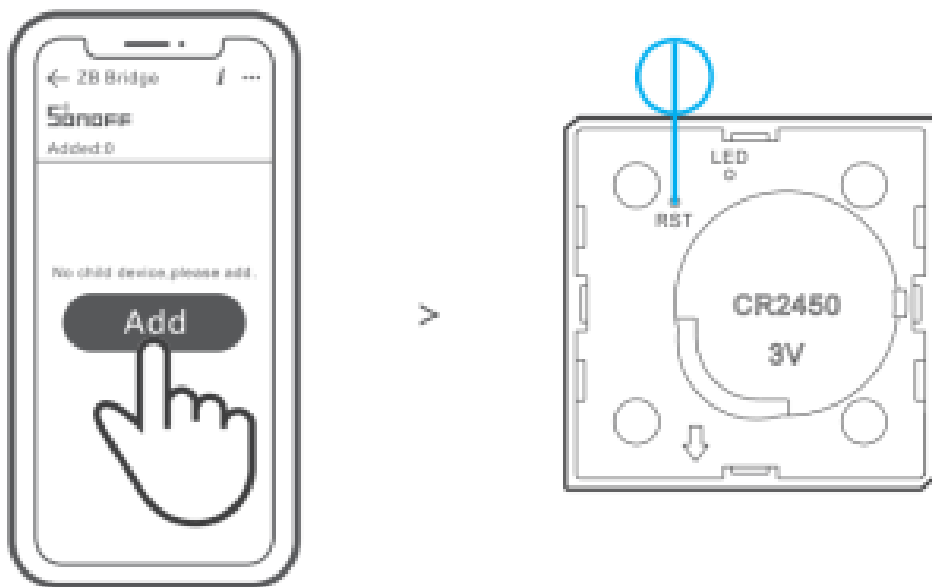


>



The device has the version with battery and without battery.

4. Add sub-devices



Access eWeLink App, select the Bridge that you want to connect, and tap “Add” to add a sub-device. Then long press “RST” reset button on the device for 5s until the LED indicator flashes slowly, which means the device has entered the pairing mode, and be patient until pairing completes.



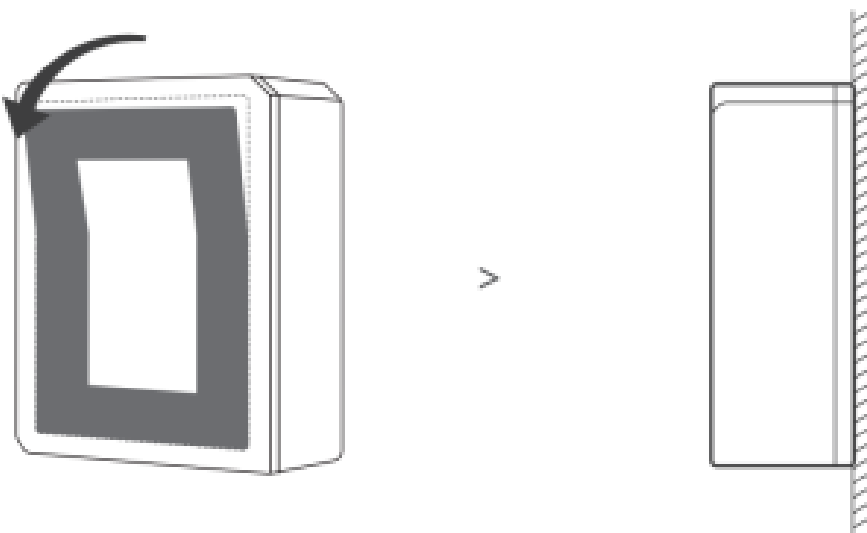
If the addition failed, move the sub-device closer to the Bridge and try again.

Installation methods

1. Placed on the desktop for use.



2. Tear off the protective film of the 3M adhesive and stick the device on the desired area.



Do not install on the metal surface, otherwise it will affect the wireless communication distance.



The device weight is less than 1 kg. The installation height of less than 2 m is recommended.

Effective Communication Distance Verification

Install the device in the desired place, then press the “Reset” button on the device. The LED indicator flashes twice means the device and the device under the same ZigBee network (the router device or hub) are in the effective communication distance.

Specifications

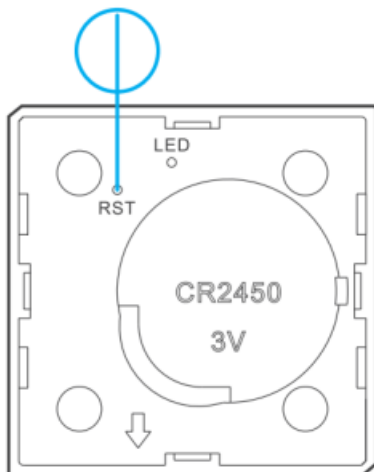
Model	SNZB-01P
Battery model	CR2450(3V)
Wireless connection	Zigbee 3.0
Working temperature	0°C-40°C
Working humidity	10-90%RH(non-condensing)
Material	PC VO
Dimension	43x43x16mm

Button action instruction

You can select to press once, press twice or long press the wireless switch to control the connected device for various functions.

Delete sub-devices

Long press the reset button on the sub-device for 5s until the LED indicator flashes three times. In this case, the sub-device is deleted from the Bridge successfully.



Users can delete sub-devices from the sub-devices page on App.

FCC Warning

Changes or modifications not expressly approved by the party responsible for compliance could avoid the user's authority to operate the equipment. This device complies with part 15 of the FCC Rules. Operation is subject to the following two conditions:

1. This device may not cause harmful interference, and
2. this device must accept any interference received, including interference that may cause undesired operation.

FCC Radiation Exposure Statement:

This equipment complies with FCC radiation exposure limits set forth for an uncontrolled environment. This transmitter must not be co-located or operating in conjunction with any other antenna or transmitter. This equipment should be installed and operated with minimum distance 20cm between the radiator & you body.

Note: This equipment has been tested and found to comply with the limits for a Class B digital device, pursuant to part 15 of the FCC Rules. These limits are designed to provide reasonable protection against harmful interference in a residential installation. This equipment generates, uses and can radiate radio frequency energy and, if not installed and used in accordance with the instructions, may cause harmful interference to radio communications. However, there is no guarantee that interference will not occur in a particular installation. If this equipment does cause harmful interference to radio or television reception, which can be determined by turning the equipment off and on, the user is encouraged to try to correct the interference by one or more of the following measures:

- Reorient or relocate the receiving antenna.
- Increase the separation between the equipment and receiver.
- Connect the equipment into an outlet on a circuit different from that to which the receiver is connected.
- Consult the dealer or an experienced radio/TV technician for help.

Hereby, Shenzhen Sonoff Technologies Co., Ltd. declares that the radio equipment type SNZB-01 P is in compliance with Directive 2014/53/EU. The full text of the EU declaration of conformity is available at the following Internet address:

<https://www.sonoff.tech/usermanuals>

Shenzhen Sonoff Technologies Co., Ltd. 1001, BLDG8, Lianhua Industrial Park, shenzhen, GD, China



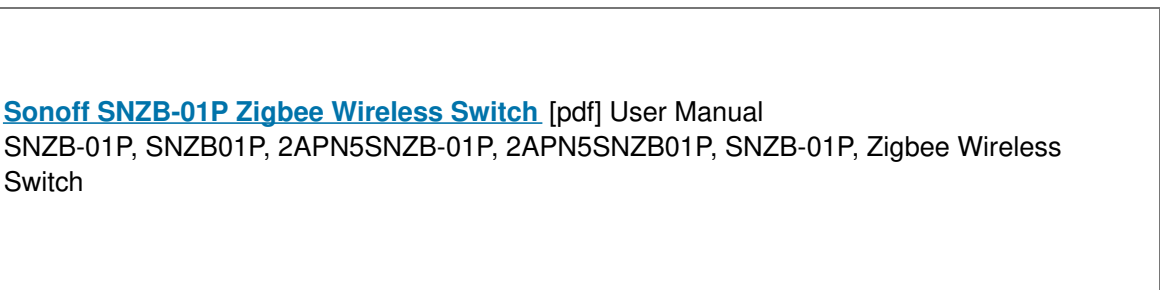
ZIP code: 518000

Website: [sonoff.tech](https://www.sonoff.tech)

MADE IN CHINA



Documents / Resources



Manuals+,