



SONOFF SNZB-01 Wireless Switch User Manual

[Home](#) » [SonOFF](#) » SONOFF SNZB-01 Wireless Switch User Manual

SONOFF SNZB-01 Wireless Switch User Manual



SNZB-01

User manual V 1.0



Wireless Switch

The device can be operated intelligently via working with the SONOFF ZigBee Bridge to communicate with other devices.

ⓘ The device can work with other gateways supporting ZigBee 3.0 wireless protocol. Detailed information is in accordance with the final product.

Contents

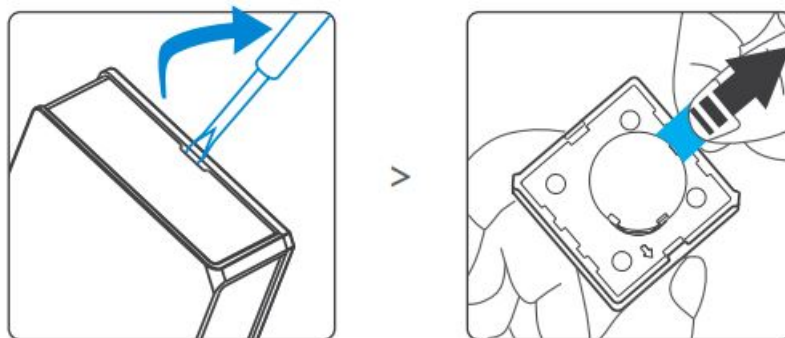
- [1 Operation instruction](#)
- [2 Specifications](#)
- [3 Product Introduction](#)
- [4 Features](#)
- [5 Button action instruction](#)
- [6 Delete sub-devices](#)
- [7 Installation methods](#)
- [8 Documents / Resources](#)

Operation instruction

1. Download APP

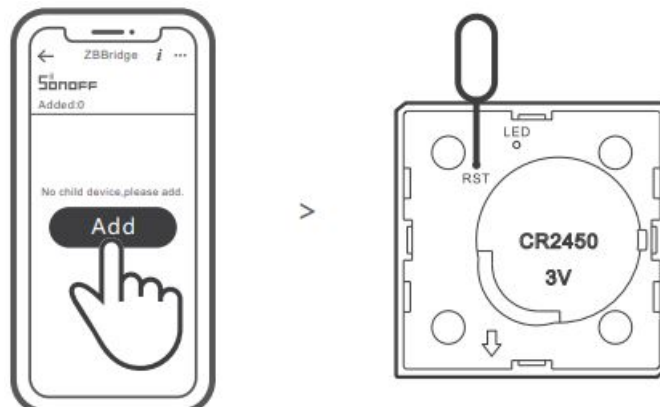


2. Pull out the battery insulation sheet



3. Add sub-devices

⚠ Connect the Bridge before adding the sub-device



Access eWeLink APP, select the Bridge that you want to connect, and tap "Add" to add a sub-device. Then long press "RST" reset button on the device for 5s until the LED indicator flashes three times, which means the device

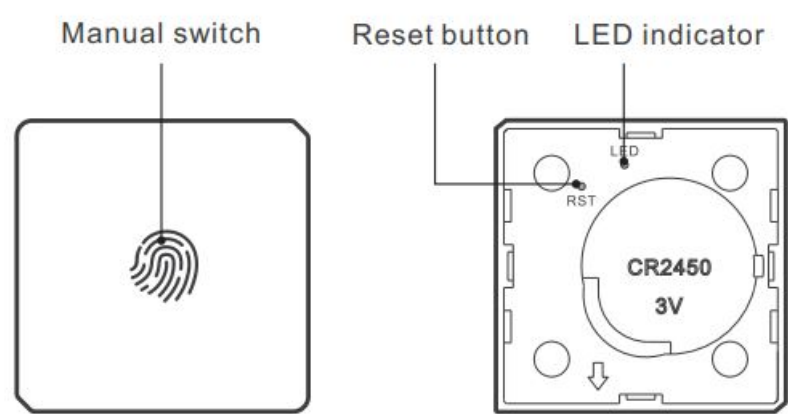
has entered the pairing mode, and be patient until pairing completes.

⚠ If the addition failed, move the sub-device closer to the Bridge and try again.

Specifications

Model	SNZB-01
Battery model	CR2450
Working voltage	3V
Wireless connection	ZigBee (IEEE 802.15.4)
Working temperature	-10~40℃
Working humidity	10-90%RH (non-condensing)
Material	PC
Dimension	43x43x16mm

Product Introduction



Features

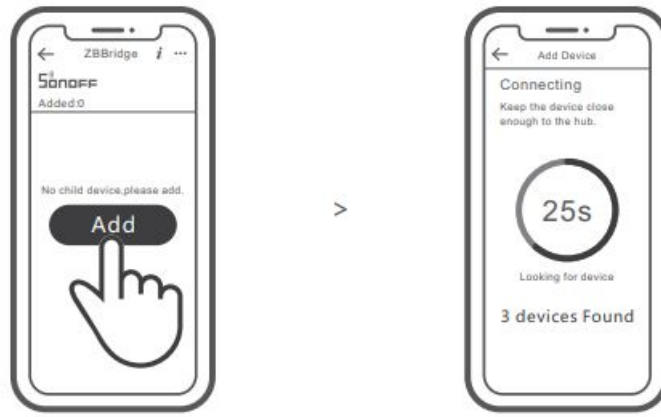
SNZB-01 is a ZigBee low-energy wireless switch that allows you to move to any place. Peel and stick. Connect it with the Bridge and you can create a smart scene to trigger other devices.



Button action instruction

You can select to press once, press twice or long press the wireless switch to control the connected device for various functions.

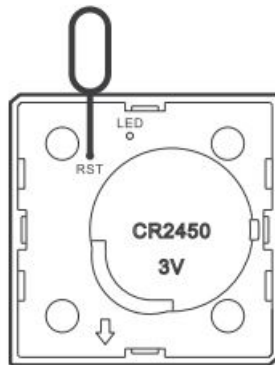
SONOFF ZigBee Bridge supports connecting multiple sub-devices at the same time.



Power the Bridge on, access the Bridge page in the eWeLink APP, and tap “Add”. Then set the sub-device to be paired to the pairing mode, and be patient until the pairing completes.

Delete sub-devices

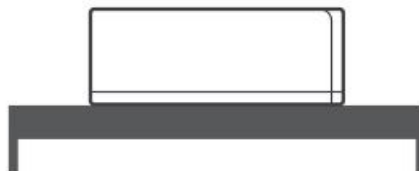
Long press the reset button on the sub-device for 5s until the LED indicator flashes three times. In this case, the sub-device is deleted from the Bridge successfully.



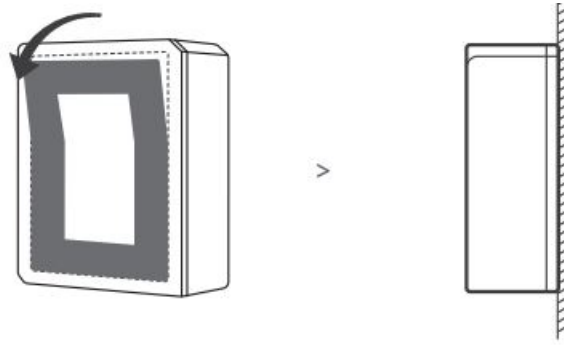
ⓘ Users can delete sub-devices directly from the sub-device page on APP. 9

Installation methods

1. Placed on the desktop for use.



2. Tear off the protective film of the 3M adhesive and stick the device on the desired area.



- ⚠ Do not install on the metal surface, otherwise it will affect the wireless communication distance.
- ⚠ The device weight is less than 1 kg. The installation height of less than 2 m is recommended.

FCC Warning

Changes or modifications not expressly approved by the party responsible for compliance could avoid the user's authority to operate the equipment.

This device complies with part 15 of the FCC Rules. Operation is subject to the following two conditions: (1) This device may not cause harmful interference, and (2) this device must accept any interference received, including interference that may cause undesired operation.

FCC Radiation Exposure Statement:

This equipment complies with FCC radiation exposure limits set forth for an uncontrolled environment. This equipment should be installed and operated with minimum distance 20cm between the radiator & your body. This transmitter must not be co-located or operating in conjunction with any other antenna or transmitter.

Note:

This equipment has been tested and found to comply with the limits for a Class B digital device, pursuant to part 15 of the FCC Rules. These limits are designed to provide reasonable protection against harmful interference in a residential installation. This equipment generates, uses and can radiate radio frequency energy and, if not installed and used in accordance with the instructions, may cause harmful interference to radio communications. However, there is no guarantee that interference will not occur in a particular installation. If this equipment does cause harmful interference to radio or television reception, which can be determined by turning the equipment off and on, the user is encouraged to try to correct the interference by one or more of the following measures:

- Reorient or relocate the receiving antenna.
- Increase the separation between the equipment and receiver.
- Connect the equipment into an outlet on a circuit different from that to which the receiver is connected.
- Consult the dealer or an experienced radio/TV technician for help.

Hereby, Shenzhen Son off Technologies Co., Ltd. declares that the radio equipment type SNZB-01 is in compliance with Directive 2014/53/EU. The full text of the EU declaration of conformity is available at the following internet address: <https://www.sonoff.tech/usermanuals>

TX Frequency:

ZigBee 2405-2480MHz

MAX PER

2.23 2405MHz 2.24 2480MHz



Shenzhen Sonoff Technologies Co., Ltd.
1001, BLDG8, Lianhua Industrial Park, shenzhen, GD, China
ZIP code: 518000

Website: sonoff.tech

MADE IN CHINA



Documents / Resources

The cover of the SONOFF SNZB-01 User Manual. It features the Sonoff logo, the model number SNZB-01, and a small image of the wireless switch device. Below the image is a table of contents for the manual.

[SONOFF SNZB-01 Wireless Switch](#) [pdf] User Manual
SNZB-01, Wireless Switch