



SONOFF SNBZ-01 Mini Zigbee Wireless Switch User Manual

[Home](#) » [SonOFF](#) » SONOFF SNBZ-01 Mini Zigbee Wireless Switch User Manual 

Contents

- [1 SONOFF SNBZ-01 Mini Zigbee Wireless Switch](#)
- [2 Operating instruction](#)
- [3 Specifications](#)
- [4 Product Introduction](#)
- [5 Button action instruction](#)
- [6 Installation methods](#)
- [7 Warranty Conditions](#)
- [8 EU Declaration of Conformity](#)
- [9 WEEE](#)
- [10 Documents / Resources](#)
 - [10.1 References](#)
- [11 Related Posts](#)



SONOFF SNBZ-01 Mini Zigbee Wireless Switch



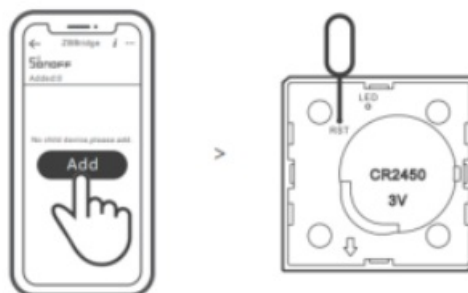
Operating instruction

1. Download APP



2. Add sub-devices

Connect the Bridge before adding the sub-device



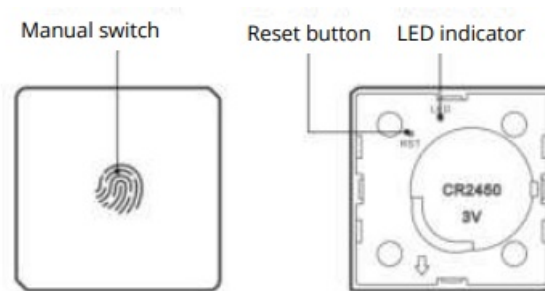
Access eWeLink APP, select the Bridge that you want to connect, and tap “Add” to add a sub-device. Then long press “RST” reset button on the device for 5s until the LED indicator flashes three times, which means the device has entered the pairing mode, and be patient until pairing completes. If the addition failed, move the sub-device closer to the Bridge and try again.

Specifications

- **Model** SNZB-01
- **Working voltage** 3V
- **Wireless connection** ZigBee (IEEE 802. 15. 4)
- **Working temperature** 10~40°C

- **Working humidity** 10-90% RH (non-condensing)
- **Material** PC
- **Dimension** 43x43x16mm

Product Introduction



Features

SNZB-01 is a ZigBee low-energy wireless switch that allows you to move to any place. Peel and stick. Connect it with the Bridge and you can create a smart to trigger other devices.



Low-energy

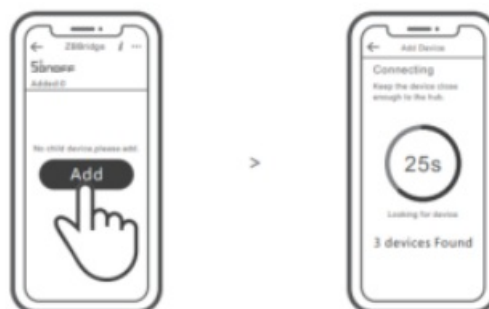


Smart scene

Button action instruction

You can select to press once, press twice or long press the wireless switch to control the connected device for various functions.

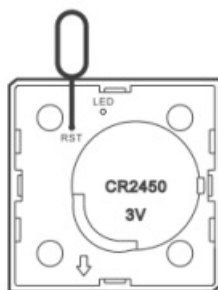
Sonoff ZigBee Bridge supports connecting multiple subdevices at the same time.



Power the Bridge on, access the Bridge page in the eWeLink APP, and tap “Add”. Then set the sub-device to be paired to the pairing mode and be patient until the pairing completes.

Delete sub-devices

Long press the reset button on the sub-devices for 5s until the LED indicator flashes three times. In this case, the sub-device is deleted from the Bridge successfully



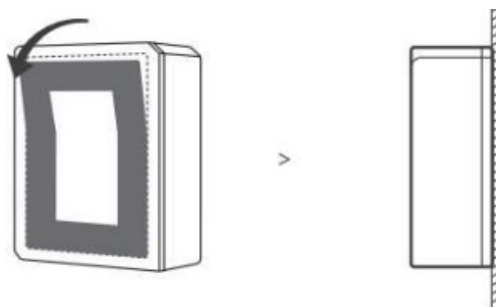
Users can delete sub-devices directly from the sub-device page on APP.

Installation methods

1. Placed on the desktop for use.



2. Tear off the protective film of the 3M adhesive and stick the device on the desired area.



- Do not install on the metal surface, otherwise it will affect the wireless communication distance.
- The device weight is less than 1 kg. The installation height of less than 2m is recommended.

Warranty Conditions

A new product purchased in the Alza.cz sales network is guaranteed for 2 years. If you need repair or other services during the warranty period, contact the product seller directly, you must provide the original proof of purchase with the date of purchase.

The following are considered to be a conflict with the warranty conditions, for which the claimed claim may not be recognized:

- Using the product for any purpose other than that for which the product is intended or failing to follow the instructions for maintenance, operation, and service of the product.
- Damage to the product by a natural disaster, the intervention of an unauthorized person or mechanically through the fault of the buyer (e.g., during transport, cleaning by inappropriate means, etc.).
- Natural wear and aging of consumables or components during use (such as batteries, etc.).
- Exposure to adverse external influences, such as sunlight and other radiation or electromagnetic fields, fluid intrusion, object intrusion, mains overvoltage, electrostatic discharge voltage (including lightning), faulty supply or input voltage and inappropriate polarity of this voltage, chemical processes such as used power supplies, etc.
- If anyone has made modifications, modifications, alterations to the design or adaptation to change or extend

the functions of the product compared to the purchased design or use of non-original components.

EU Declaration of Conformity

Identification data of the manufacturer's / importer's authorized representative:

- **Importer:** Alza.cz a.s.
- **Registered office:** Jankovcova 1522/53, Holešovice, 170 00 Prague 7
- **CIN:** 27082440

Subject of the declaration:

- **Title:** Wireless Switch
- **Model / Type:** SNZB-01

The above product has been tested in accordance with the standard(s) used to demonstrate compliance with the essential requirements laid down in the Directive(s):

Directive No. 2014/53/EU

Directive No. 2011/65/EU as amended 2015/863/EU

WEEE


This product must not be disposed of as normal household waste in accordance with the EU Directive on Waste Electrical and Electronic Equipment (WEEE – 2012/19 / EU). Instead, it shall be returned to the place of purchase or handed over to a public collection point for the recyclable waste. By ensuring this product is disposed of correctly, you will help prevent potential negative consequences for the environment and human health, which could otherwise be caused by inappropriate waste handling of this product. Contact your local authority or the nearest collection point for further details. Improper disposal of this type of waste may result in fines in accordance with national regulations.

Dear customer,

Thank you for purchasing our product. Please read the following instructions carefully before first use and keep this user manual for future reference. Pay particular attention to the safety instructions. If you have any questions or comments about the device, please contact the customer line.

- ✉ www.alza.co.uk/kontakt
- ☎ +44 (0)203 514 4411
- **Importer** Alza.cz a.s., Jankovcova 1522/53, Holešovice, 170 00 Praha 7,
- www.alza.cz

Documents / Resources

	<p>SONOFF SNBZ-01 Mini Zigbee Wireless Switch [pdf] User Manual</p> <p>SNBZ-01 Mini Zigbee Wireless Switch, SNBZ-01, Mini Zigbee Wireless Switch, Mini Zigbee, Zig bee Wireless Switch, Zigbee Switch, Wireless Switch, Switch, SNBZ-01 Switch, SNBZ-01 Wirel ess Switch</p>
---	--

References

- 🐸 [Alza.sk – rýchly a pohodlný nákup odkiaľkoľvek | alza.sk](#)
- 🐸 [alza.at](#)
- 🇬🇧 [alza.co.uk](#)
- 🐸 [alza.de](#)
- 🐸 [alza.fr](#)
- 🐸 [alza.hu](#)
- 🐸 [alza.sk](#)