



SONOFF S60TPG Wi-Fi Smart Plug User Guide

[Home](#) » [SonOFF](#) » SONOFF S60TPG Wi-Fi Smart Plug User Guide 

Contents

- [1 SONOFF S60TPG Wi-Fi Smart Plug](#)
- [2 Documents / Resources](#)
 - [2.1 References](#)



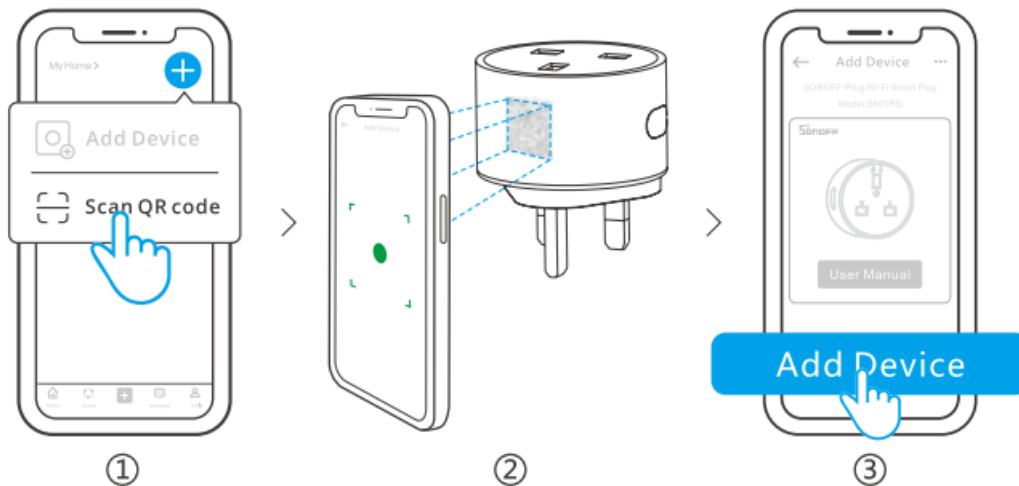
SONOFF S60TPG Wi-Fi Smart Plug



Download the eWeLink App



- **Scan QR Code to Add Device**



1. Open the eWeLink App and tap on the “+” icon in the top right corner, select “Scan QR code”.
2. Scan the QR code on the device.
3. Select “Add device” and complete pairing according to the prompt.
If the page cannot be displayed, please ensure the device is powered on, click “+” in the upper right corner of the eWeLink App homepage, and select “Add Device” to proceed.)

MANUAL

- Enter URL <https://sonoff.tech/usermanuals> to view detailed product manual and help.

EU Declaration of Conformity

- Hereby, Shenzhen Sonoff Technologies Co., Ltd. declares that the radio equipment type S60TPG is in compliance with Directive 2014/53/EU. The full text of the EU declaration of conformity is available at the following internet address: <https://sonoff.tech/usermanuals>

For CE Frequency:

- **Operation frequency Range:**
 - BLE: 2402-2480MHz
- **RF Output Power:**
 - BLE: ≤10dBm
 - Wi-Fi: ≤20dBm


- **Wi-Fi Operation Frequency:**

- 802.11 b/g/n20 2412-2472
- MHZ 802.11 n40: 2422-2462 MHz

To ensure the safety of your electrical installation, it's essential either a Miniature Circuit Breaker (MCB) or a Residual Current Operated Circuit Breaker (RCO) with an electrical rating of 13A has been installed before the plug

WEEE Disposal and Recycling




-  Information All products bearing this symbol are waste electrical and electronic equipment (WEEE as in directive 2012/19/EU) which should not be mixed with unsorted household waste. Instead, you should protect human health and the environment by handing over your waste equipment to a designated collection point for the recycling of waste electrical and electronic equipment, appointed by the government or local authorities. Correct disposal and recycling will help prevent potential negative consequences to the environment and human health. Please contact the installer or local authorities for more information about the location as well as terms and conditions of such collection points...

Shenzhen Sonoff Technologies

- Co., Ltd. 3F & 6F, Bldg A, No. 663, Bulong Rd, Shenzhen, Guangdong, China
- **ZIP code:** 518000
- **Service email:** support@itead.cc
- **Website:** sonoff.tech
- MADE IN CHINA

Documents / Resources

	SONOFF S60TPG Wi-Fi Smart Plug [pdf] User Guide S60TPG Wi-Fi Smart Plug, S60TPG, Wi-Fi Smart Plug, Smart Plug, Plug
---	--

References

- [User Manual](#)