

**SONOFF S60TPG iPlug Wi-Fi Smart Plug**



**SONOFF S60TPG iPlug Wi-Fi Smart Plug User Guide**

[Home](#) » [SonOFF](#) » SONOFF S60TPG iPlug Wi-Fi Smart Plug User Guide 

Contents

1

SONOFF S60TPG iPlug Wi-Fi Smart Plug

2

Using Instruction

3

For CE Frequency

4

Documents / Resources

4.1

References



**SONOFF S60TPG iPlug Wi-Fi Smart Plug**

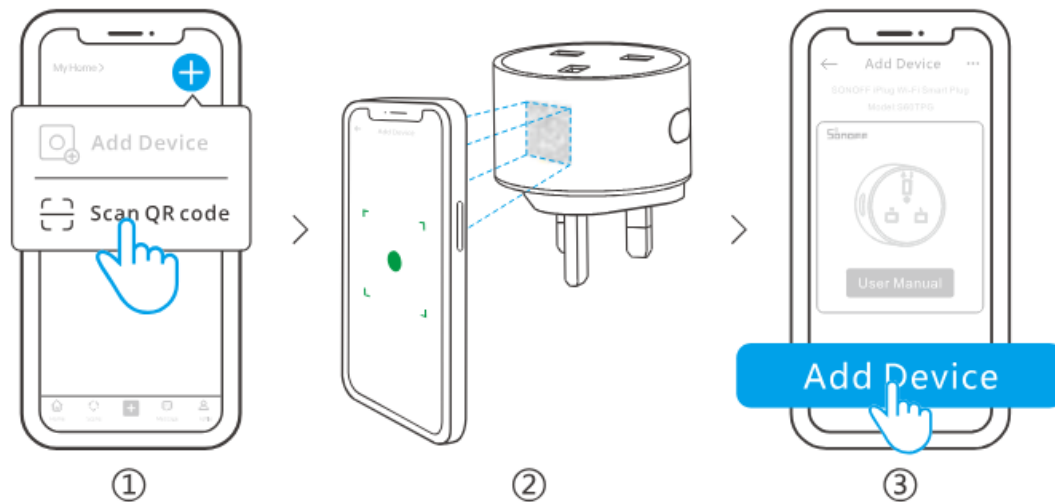


## Using Instruction

- Download the eWeLink App



- Scan QR Code to Add Device



1. Open the eWeLink App and tap on the “+” icon in the top right corner, select “Scan QR code”
2. Scan the QR code on the device.
3. Select “Add device” and complete pairing according to the prompt.
4. Open de eWeLink App en tik op het “+” pictogram in de rechterbovenhoek, selecteer “Scan QR code”.
5. Scan de QR-code op het apparaat.
6. Selecteer “Apparaat toevoegen” en voltooi de koppeling volgens de prompt.

Enter URL <https://sonoff.tech/usermanuals> to view a detailed product manual and help.

### EU Declaration of Conformity

Hereby, Shenzhen Sonoff Technologies Co., Ltd. declares that the radio equipment type S60TPG complies with Directive 2014/53/EU. The full text of the EU Declaration of Conformity is available at the following internet address: <https://sonoff.tech/usermanuals>

### For CE Frequency

- **Operation frequency Range:**
  - **BLE:** 2402-2480MHz
- **RF Output Power:**
  - **BLE:** ≤10dBm
  - **Wi-Fi:** ≤20dBm

- **Wi-Fi Operation Frequency:**

- 802.11 b/g/n20 2412-2472 MHZ
- 802.11 n40: 2422-2462 MHz

To ensure the safety of your electrical installation, either a Miniature Circuit Breaker (MCB) or a Residual Current Operated Circuit Breaker (RCBO) with an electrical rating of 13A must be installed before the plug.

### **WEEE Disposal and Recycling Information**

All products bearing this symbol are waste electrical and electronic equipment (WEEE as in directive 2012/19/EU) which should not be mixed with unsorted household waste. Instead, you should protect human health and the environment by handing over your waste equipment to a designated collection point for the recycling of waste electrical and electronic equipment, appointed by the government or local authorities. Correct disposal and recycling will help prevent potential negative consequences to the environment and human health. Please contact the installer or local authorities for more information about the location as well as the terms and conditions of such collection points.

### **Shenzhen Sonoff Technologies Co., Ltd.**

- **Address:** 3F & 6F, Bldg A, No. 663, Bulong Rd, Shenzhen, Guangdong, China
- **ZIP code:** 518000
- **Service email:** [support@itead.cc](mailto:support@itead.cc)
- **Website:** [sonoff.tech](http://sonoff.tech)

### **Documents / Resources**

	<a href="#">SONOFF S60TPG iPlug Wi-Fi Smart Plug</a> [pdf] User Guide S60TPG iPlug Wi-Fi Smart Plug, iPlug Wi-Fi Smart Plug, Wi-Fi Smart Plug, Smart PlugPlug
---	--

### **References**

- [User Manual](#)

[Manuals](#), [Privacy Policy](#)

This website is an independent publication and is neither affiliated with nor endorsed by any of the trademark owners. The "Bluetooth®" word mark and logos are registered trademarks owned by Bluetooth SIG, Inc. The "Wi-Fi®" word mark and logos are registered trademarks owned by the Wi-Fi Alliance. Any use of these marks on this website does not imply any affiliation with or endorsement.