



sonoff S60TPF Wi-Fi Smart Plug User Manual

[Home](#) » [SonOFF](#) » sonoff S60TPF Wi-Fi Smart Plug User Manual 

sonoff S60TPF Wi-Fi Smart Plug User Manual



Contents

- 1 Introduction
- 2 A “safe and reliable” Wi-Fi Smart Plug with main functions such as remote control, monitoring, and voice control. You are able to check the daily/monthly power consumption on the energy overview page in the ewe Link App. Home automation can be achieved by the configuration of smart scenes, timers, schedules, etc.
- 3 Remote Control
- 4 Timers/Schedule
- 5 Voice Control
- 6 Device Sharing
- 7 Smart Scene
- 8 Inching Mode
- 9 Energy Overview
- 10 Over-load Protection
- 11 Button
- 12 Press once: Turn on/off the smart plug. Press and hold for 5 seconds : Device enters the pairing mode.
- 13 Wi-Fi LED indicator (Blue)
- 14 Keeps on: Device is online. Two short and one long flashes: Device is in pairing mode. Quick flash: Router not connected. Flash twice: Connected to the router, noninfected to the cloud. Flash three times: Firmware upgrade in progress.
- 15 Power LED indicator (Red) Light on: The device is on. Light off: The device is off.
- 16 Compatible Voice Assistants
- 17 Specification
- 18 Documents / Resources
 - 18.1 References
- 19 Related Posts

Introduction

A “safe and reliable” Wi-Fi Smart Plug with main functions such as remote control, monitoring, and voice control. You are able to check the daily/monthly power consumption on the energy overview page in the ewe Link App. Home automation can be achieved by the configuration of smart scenes, timers, schedules, etc.

- Remote Control



- Timers/Schedule



- **Voice Control**



- **Device Sharing**



- **Smart Scene**



- **Inching Mode**



- **Energy Overview**



- **Over-load Protection**



1. Button

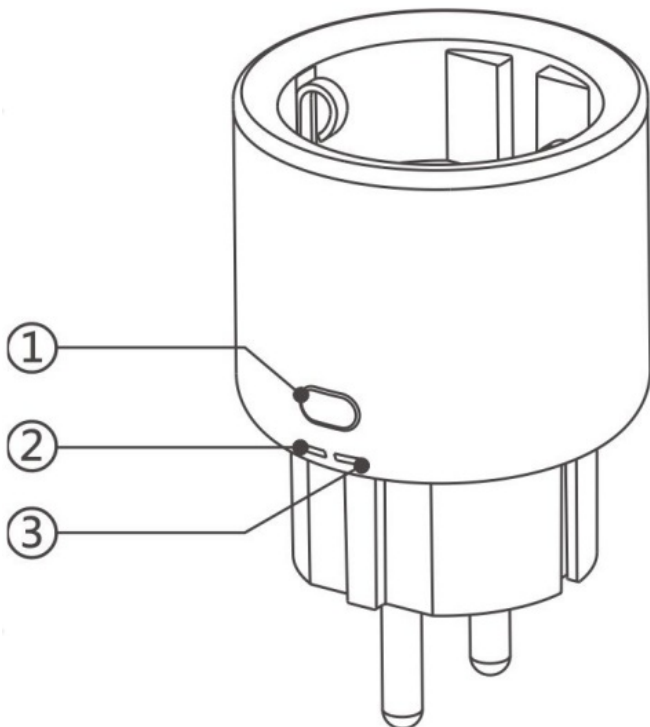
Press once: Turn on/off the smart plug. **Press and hold for 5 seconds :** Device enters the pairing mode.

2. Wi-Fi LED indicator (Blue)

Keeps on: Device is online. **Two short and one long flashes:** Device is in pairing mode. **Quick flash:** Router not connected. **Flash twice:** Connected to the router, noninfected to the cloud. **Flash three times:** Firmware upgrade in progress.

3. Power LED indicator (Red)

Light on: The device is on. **Light off:** The device is off.



Compatible Voice Assistants



Specification

Model	S60TPF
MCU	ESP32-C3
Input	250V~,50/60Hz,16A
Max. Load	4000W
Wireless Connectivity	Wi-Fi IEEE 802.11 b/g/n 2.4GHz
Net Weight	79g
Dimension	50x50x61.5mm
Color	White
Casing Material	PC V0
Applicable Place	Indoor
Working Temperature	-10°C~40°C
Working Humidity	5%~95% RH, non-condensing
Certified Compliance	CE/RoHS

Add Device

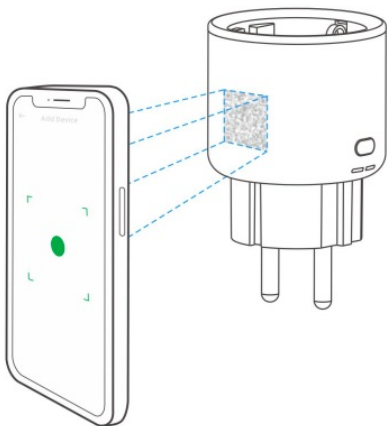
1. Enter "Scan"

1



2. Scan the QR code on the device

2



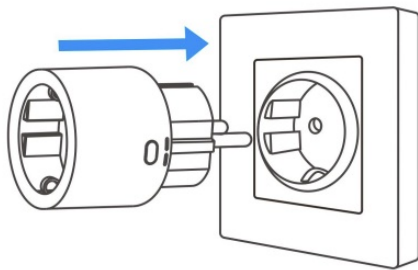
3. Select "Add Device"

3



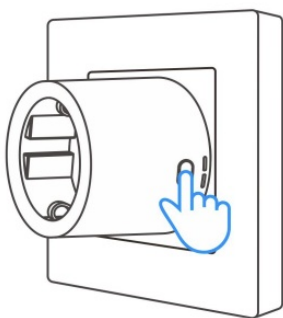
4. Plug in

4



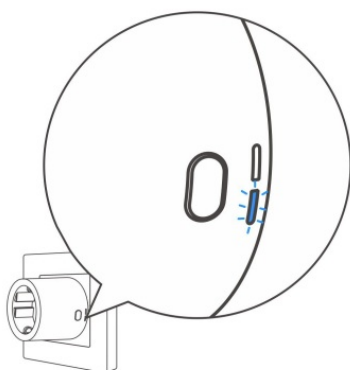
5. Long press the button for 5 seconds

5

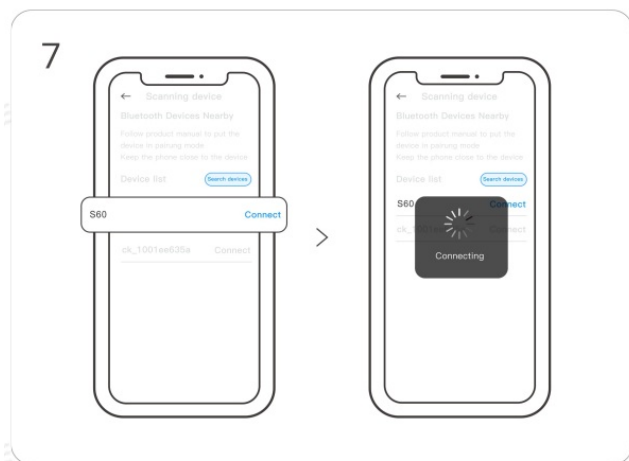


6. Check Wi-Fi LED indicator flashing status (Two short and one long flashes)

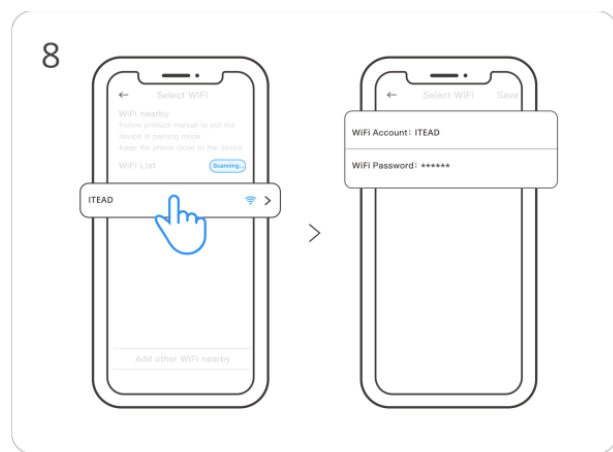
6



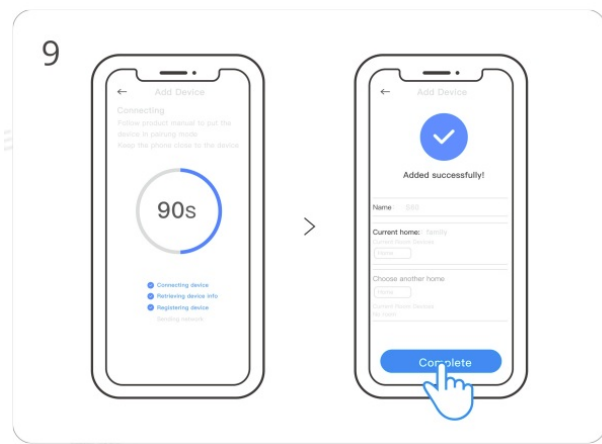
7. Search for the device and start connecting



8. Select the “Wi-Fi” network and enter the password



9. Device added completely



EU Declaration of Conformity

Hereby, Shenzhen Soloff Technologies Co., Ltd. declares that the radio equipment type S60TPF is in compliance with Directive 2014/53/EU. The full text of the EU declaration of conformity is available at the following internet address:

<https://sonoff.tech/usermanuals>

Under normal use of condition, this equipment should be kept a separation distance of at least 20 cm between the antenna and the body of the user

For CE Frequency

Operation frequency Range

BLE: 2402-2480MHz

Wi-Fi Operation Frequency: 802.11 b/g/n20 2412-2472 MHz 802.11 n40: 2422-2462 MHz

RF Output Power: BLE: ≤10dBm Wi-Fi: ≤20dBm

WEEE Disposal and Recycling Information



■ All products bearing this symbol are waste electrical and electronic equipment (WEEE as i direct/19/EU) which should not be mixed with unsorted household waste. Instead, you should protect human health and the environment by handing over your waste equipment to a designated collection point for the recycling of waste electrical and electronic equipment, appointed by the government or local authorities. Correct disposal and recycling will help prevent potential negative consequences to the environment and human health. Please contact the installer or local authorities for more information about the location as well as terms and conditions of such collection points.

Manufacturer: Shenzhen Soloff Technologies Co., Ltd.

Address: 3F & 6F, Bldg. A, No. 663, Belong Rd, Shenzhen, Guangdong, China

ZIP code: 518000


Service email: support@itead.cc

Website: sonoff.tech

Made in China



Documents / Resources

<div><div>S60TPF EN</div><div></div><div><div>Wi-Fi Smart Plug</div><div>User Manual V1.0</div></div><div><div>Introduction</div><p>A smart plug is a device that can be controlled remotely via a smartphone app or a web interface. It can be used to control any electrical device that has a standard AC power plug. The S60TPF is a smart plug that can be controlled via the Sonoff mobile app or the Sonoff web interface. It can be used to control any electrical device that has a standard AC power plug.</p><div><div>Smartphone</div><div>Web Interface</div><div>Mobile App</div><div>Remote Control</div></div></div></div>	<div><div>sonoff S60TPF Wi-Fi Smart Plug [pdf] User Manual</div><div>S60TPF Wi-Fi Smart Plug, S60TPF, Wi-Fi Smart Plug, Smart Plug, Plug</div></div>
---	--

References

- [📄 User Manuals - SONOFF Official](#)
- [User Manual](#)