



## Sonoff S31 Lite zb ZigBee Smart Plug US Type User Manual

[Home](#) » [SonOFF](#) » Sonoff S31 Lite zb ZigBee Smart Plug US Type User Manual 



S31 Lite ZB  
User manual V1.3



The device can be operated intelligently by working with the SONOFF ZigBee Bridge to communicate with other devices.



The device can work with other gateways supporting ZigBee 3.0 wireless protocol. Detailed information is in accordance with the final product.

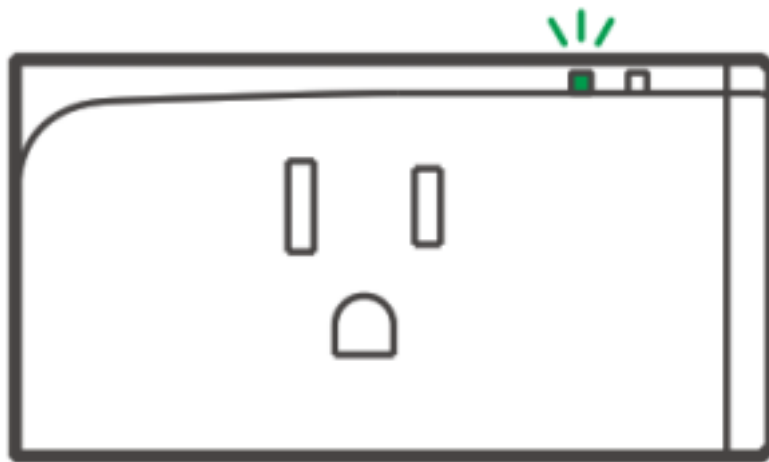
### Contents

- [1 Operating Instruction](#)
- [2 Add sub-devices](#)
- [3 Specifications](#)
- [4 Product Introduction](#)
- [5 Features](#)
- [6 Switch Network](#)
- [7 Factory Reset](#)
- [8 FCC Warning](#)
- [9 Documents / Resources](#)
- [10 Related Posts](#)

### Operating Instruction



## Power on

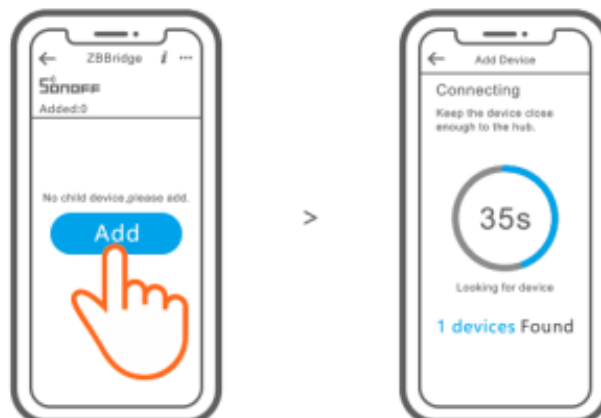


After powering on, the device will enter the pairing mode during the first use, and the LED signal indicator flashes.

⚠ The device will exit the pairing mode if no next operation for a long time. I enter again, please long press the manual switch for 5s until the LED signal indicator flashes and releases.

## Add sub-devices

Connect the Bridge before adding the sub-device.



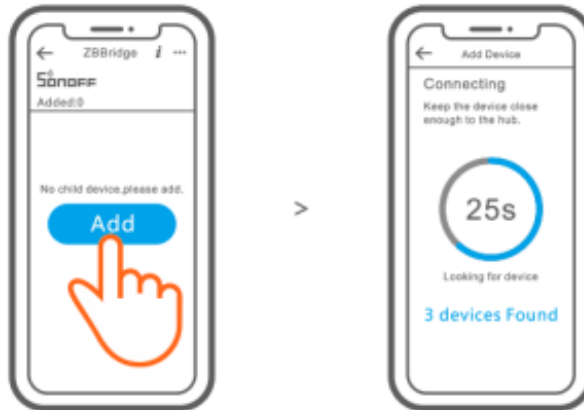
Access the eWeLink APP, select the Bridge that you want to connect and tap “Add” to add a sub-device, and be

patient until pairing completes.



If the addition failed, move the sub-device closer to the Bridge and try again.

SONOFF ZigBee Bridge supports connecting multiple sub-devices at the same time.



Power the Bridge on, set the sub-device to the pairing mode. Then access the Bridge page in the eWeLink APP to tap “Add”, and be patient until the pairing completes.

More APP application platforms and gateway recommendations



SmartThings



Amazon Alexa

This device supports the following gateways besides SONOFF ZigBee.

Echo Studio
Echo Plus (model: ZE39KL)
2nd Gen Echo Show (model: DW84JL)
2nd Gen Echo Plus (model: L9D29R)
Samsung SmartThings hub

Gateway adding instruction:

1. Refer to the gateway user manual to download the matched APP and get it paired
2. Set S31 Lite ZB to the pairing mode.
3. Add S31 Lite zb according to the prompt of APP. You should select eWeLink or SONOFF when adding.

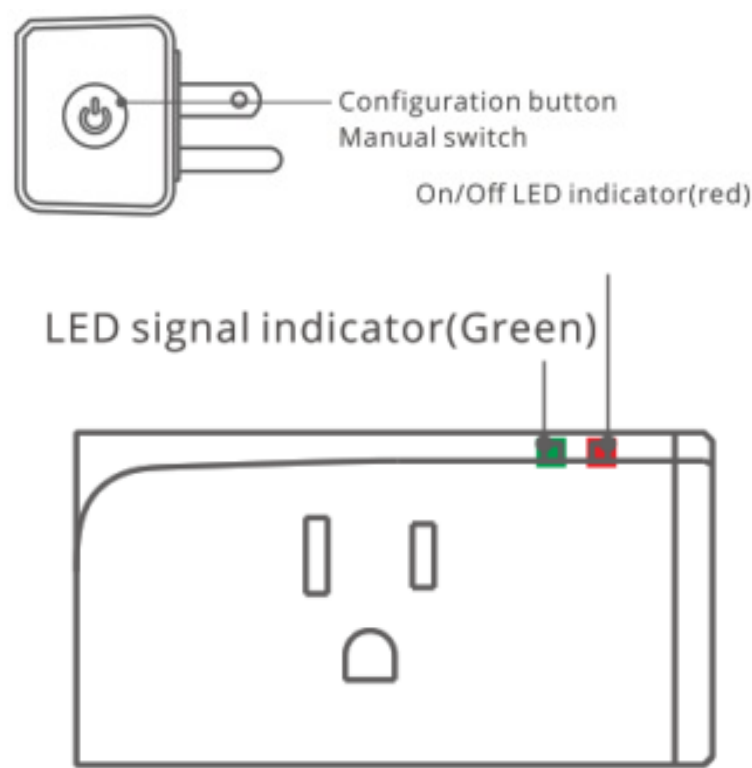


If the addition failed, move the sub-device closer to the Bridge and try again.

Specifications

Model	S31 Lite ZB
Input	120V AC 60Hz
Output	120V AC 60Hz
Max. Load	1 5A/1 800W
ZigBee	IEEE 802.15.4 2.4GHz
Material	PC VO
Dimension	76x40x33mm

Product Introduction

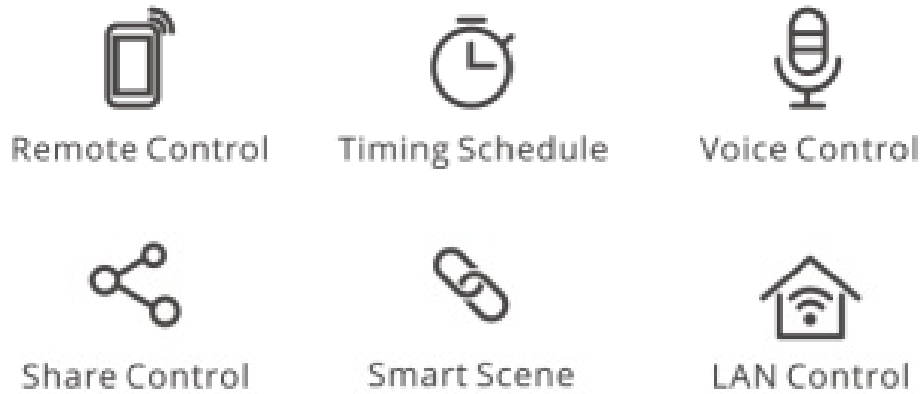


The device's weight is less than 1 kg. An installation height of less than 2 m is recommended.

Features

S31 Lite ZB is a smart Plug adopting ZigBee wireless communication protocol that accesses to the Internet via ZigBee Bridge. You can remotely turn on or off the device via your smartphone, schedule it on/off and share it with

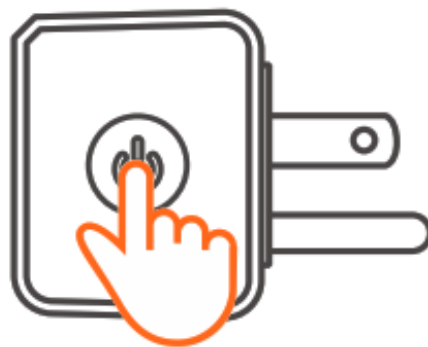
your family to control together.



ⓘ The above functions are determined by ZigBee Hub.

## Switch Network

If you need to change the network, long-press the pairing button for 5s until the Wi-Fi LED indicator changes in a cycle of two short and one long flash and release, then the device enters quick pairing mode and you can pair again.



## Factory Reset

Deleting the device on the eWeLink app indicates you restore it to the factory setting.

## FCC Warning

Changes or modifications not expressly approved by the party responsible for compliance could avoid the user's authority to operate the equipment.

This device complies with part 15 of the FCC Rules. Operation is subject to the following two conditions: (1) This device may not cause harmful interference, and (2) this device must accept any interference received, including interference that may cause undesired operation.

### **FCC Radiation Exposure Statement:**

This equipment complies with FCC radiation exposure limits set forth for an uncontrolled environment. This equipment should be installed and operated with a minimum distance 20cm between the radiator & your body. This transmitter must not be co-located or operating in conjunction with any other antenna or transmitter.

### **Note:**

This equipment has been tested and found to comply with the limits for a Class B digital device, pursuant to part 15 of the FCC Rules. These limits are designed to provide reasonable protection against harmful interference in a

residential installation. This equipment generates, uses and can radiate radio frequency energy and, if not installed and used in accordance with the instructions, may cause harmful interference to radio communications. However, there is no guarantee that interference will not occur in a particular installation. If this equipment does cause harmful interference to radio or television reception, which can be determined by turning the equipment off and on, the user is encouraged to try to correct the interference by one or more of the following measures:

- Reorient or relocate the receiving antenna.
- Increase the separation between the equipment and receiver.
- Connect the equipment into an outlet on a circuit different from that to which the receiver is connected.
- Consult the dealer or an experienced radio/TV technician for help.



<https://sonoff.tech/usermanuals>

Scan the QR code or visit the website to check the latest user manual.

Hereby, Shenzhen Sonoff Technologies Co., Ltd. declares that the radio equipment type 531 Lite ZB is in compliance with Directive 2014/53/EU. The full text of the EU declaration of conformity is available at the following Internet address:

<https://sonoff.tech/usermanuals>

TX Frequency: 2405-2480MHz

RX Frequency: 2405-2480MHz

Output Power: 1.80dBm

Shenzhen Sonoff Technologies Co., Ltd.

1001, BLDG8, Lianhua Industrial Park, Shenzhen, GD, China

Website: sonoff.tech ZIP code: 518000

MADE IN CHINA



LIKE IT!

Glad to know you are satisfied with SONOFF products. It would mean a lot to us if you can take a minute to share your buying experience.





Share it on Amazon



Share it on your social media



Share it with your friends and family  
Get the latest news by following us:  
New arrival Promotion How-to videos

#### HAVE A PROBLEM?

We are so sorry for the inconvenience caused by the product.  
Please contact us for help via the email address below.



[support@itead.cc](mailto:support@itead.cc)

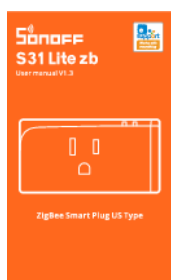
We will get back to you as soon as possible.



YouTube

[https://www.youtube.com/channel/UC1EsS\\_wR0\\_isqSbbN-ZM8GA](https://www.youtube.com/channel/UC1EsS_wR0_isqSbbN-ZM8GA)

## Documents / Resources



[Sonoff S31 Lite zb ZigBee Smart Plug US Type](#) [pdf] User Manual  
S31 Lite zb, ZigBee Smart Plug US Type