

**SONOFF**  
SONOFF S26R2  
ZigBee Smart Plug



## SONOFF S26R2 ZigBee Smart Plug User Guide

[Home](#) » [SonOFF](#) » SONOFF S26R2 ZigBee Smart Plug User Guide 

### Contents

- [1 SONOFF S26R2 ZigBee Smart Plug](#)
- [2 Amazon Frustration-Free Setup \(FFS\)](#)
- [3 EU Declaration of Conformity](#)
- [4 WEEE Disposal and Recycling Information](#)
- [5 Documents / Resources](#)
  - [5.1 References](#)
- [6 Related Posts](#)

**SONOFF**

**SONOFF S26R2 ZigBee Smart Plug**



## Pairing method

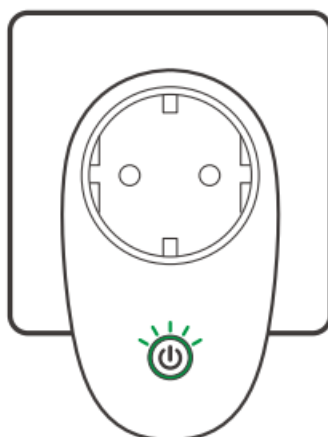
Pair with eWeLink App

- Download the eWeLink App



- Add SONOFF ZB Bridge to your eWeLink account

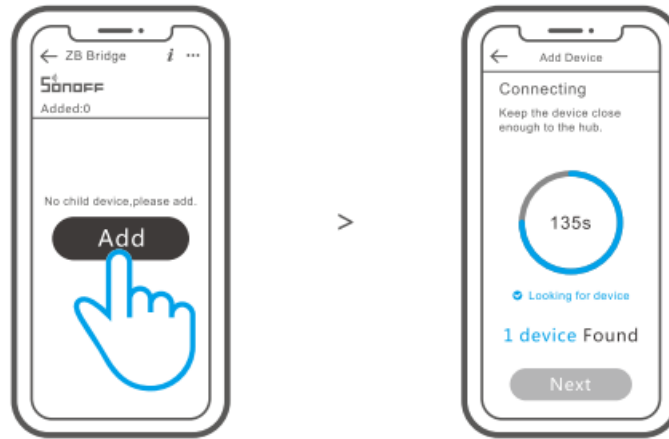
## Power on



After powering on, the device will enter the pairing mode defaulted during the first use and the Zigbee LED indicator will “flash slowly”.

The device will exit the pairing mode if you do not pair it within 3 minutes. If you want to enter the pairing mode again, long press the button on the device for 5 seconds until the Zigbee LED indicator “flashes slowly” and release.

## Add device to the ZB Bridge

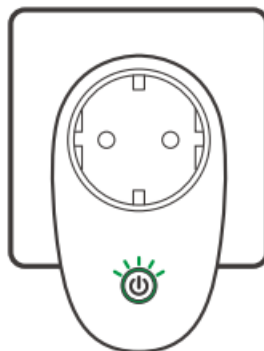


Open eWeLink App, tap “Add” icon on the ZB Bridge interface, then wait for the search to add the sub-devices.

## Amazon Frustration-Free Setup (FFS)

Application: The account you use to purchase this device on [Amazon.com](https://www.amazon.com) is the same as the account you sign in the smart speaker (with Certified for Humans badge and Zigbee hub).

- Download the latest Amazon Alexa App and pair it with Amazon Echo.
- 



After power on the device, it will enter the FFS pairing mode defaulted and the Zigbee LED indicator will “flash slowly”.

- You will hear “New plug found” within 1-2 mins after power on, then refresh the device list in the Alexa App and you will see the device is added successfully. Then you can control the device by saying “Alexa, turn on the First Plug.”

<https://sonoff.tech/product-review/tutorial/works-with-alexa-instruction-guide/>



1. The device will exit FFS pairing mode if it without paired successfully within 3mins. If it needs to enter the paring mode again, please long press the button on the device for 5s until the Zigbee LED indicator “flashes

slowly”, ‘, then release.

2. If the device is failed to been paired through FFS pairing mode for a long time, please pair the device through the eWeLink App.
3. FFS pairing method can only be used to add devices to the Alexa App.
4. If you want to link your eWeLink and Alexa accounts, please complete it through Account Linking in the eWeLink App, scan the QR code or enter the URL to check the guideline of Account Linking.

## User Manual

<https://sonoff.tech/usermanuals>



Scan the QR code or visit the website to learn about the detailed user manual and help.

To ensure the safety of your electrical installation, it's essential either a Miniature Circuit Breaker (MCB) or a Residual Current operated Cicuit-breaker with Integral Overcurrent protection(RCBO) with an electrical rating of 16A has been installed before the S26R2ZBTPF, S26R2ZBTPE, S26R2ZBTPG.

## EU Declaration of Conformity

Hereby, Shenzhen Sonoff Technologies Co., Ltd. declares that the radio equipment type S26R2ZBTPF, S26R2ZBTPE, S26R2ZBTPG are in compliance with Directive 2014/53/EU. The full text of the EU declaration of conformity is available at the following internet address: <https://sonoff.tech/compliance/>

## For CE Frequency EU

Operating Frequency

Range Zigbee:2405-2480MHz EU Output

Power Zigbee:≤10dBm

## Warning

Under normal use of condition, this equipment should be kept a separation distance of at least 20 cm between the antenna and the body of the user.

## WEEE Disposal and Recycling Information



■ All products bearing this symbol are waste electrical and electronic equipment (WEEE as in directive 2012/19/EU) which should not be mixed with unsorted household waste. Instead, you should protect human health and the environment by handing over your waste equipment to a designated collection point for the recycling of waste electrical and electronic equipment, appointed by the government or local authorities. Correct disposal and recycling will help prevent potential negative consequences to the environment and human health. Please contact the installer or local authorities for more information about the location as well as terms and conditions of such collection points.

## Shenzhen Sonoff Technologies Co., Ltd.

3F & 6F, Bldg A, No. 663, Bulong Rd, Shenzhen, Guangdong, China ZIP code: 518000 Service email:

## WARNING

1. Risk of electric shock, this product is not a toy and not intended for use by children. For adult use only.
2. The appliance is suitable for moderate climates only.
3. The ventilation must not be impaired by covering the appliance with items such as newspapers, table cloths, curtains, etc.
4. Naked flame sources, such as candles, must not be placed on the appliance.

## Documents / Resources



[SONOFF S26R2 ZigBee Smart Plug](#) [pdf] User Guide  
S26R2 ZigBee Smart Plug, S26R2, ZigBee Smart Plug, Smart Plug

## References

- [User Manual](#)

### [Manuals+](#), [Privacy Policy](#)

This website is an independent publication and is neither affiliated with nor endorsed by any of the trademark owners. The "Bluetooth®" word mark and logos are registered trademarks owned by Bluetooth SIG, Inc. The "Wi-Fi®" word mark and logos are registered trademarks owned by the Wi-Fi Alliance. Any use of these marks on this website does not imply any affiliation with or endorsement.