



SONOFF S26R2 WiFi Smart Plug User Guide

[Home](#) » [SonOFF](#) » SONOFF S26R2 WiFi Smart Plug User Guide 

Contents

- [1 SONOFF S26R2 WiFi Smart Plug](#)
- [2 Download the eWellnkApp](#)
- [3 Tap “+” and select “Add Device”, then operate following the prompt on the App. Guide to eWeLink and Alexa Accounts Linking](#)
- [4 FCC Warning](#)
- [5 EU Declaration of Conformity](#)
- [6 Documents / Resources](#)
- [7 Related Posts](#)



SONOFF S26R2 WiFi Smart Plug



Download the eWellnkApp



TPG(UK)



TPF(DE)



TPE(FR)



TPB(US)



TPI(AU)



TPAI(CN)



TPH(IL)



TPN(BR)



TPJ(CH)

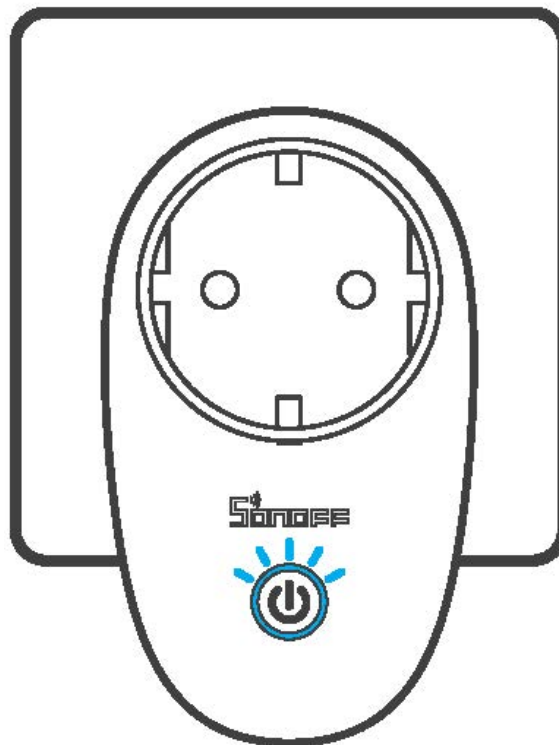


TPL(IT)



Power on

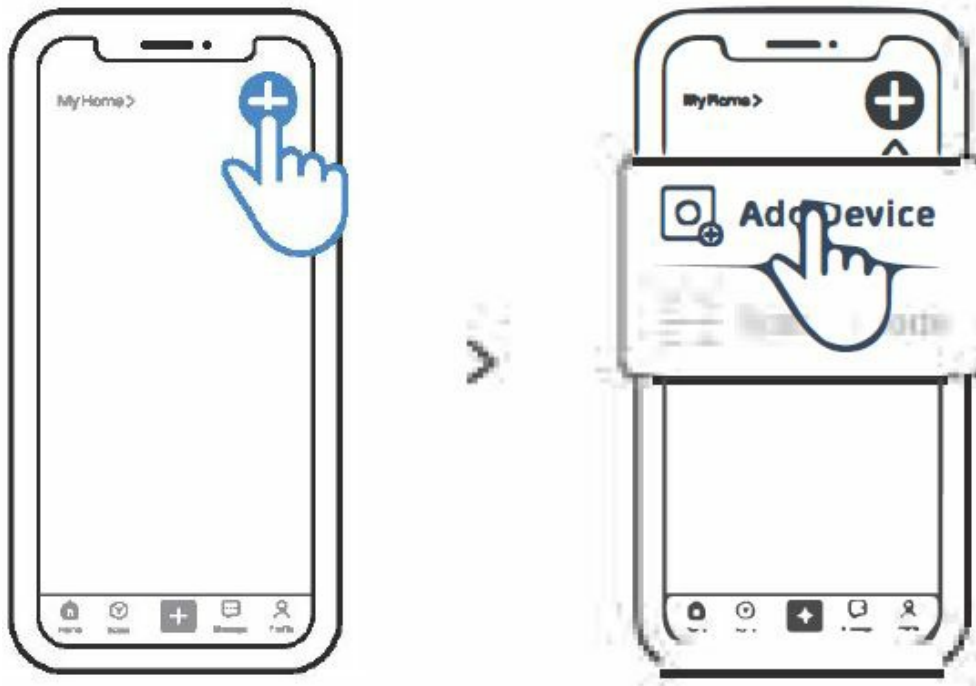
- After powering on, the device will enter the Pairing Mode during the first use.
- The Wi-Fi LED indicator changes in a cycle of two short and one long flash and release.



The device will exit the Pairing Mode if not paired within 3mins. If you want to enter this mode, please long press any pairing button for about 5s until the Wi-Fi LED indicator changes in a cycle of two short and one long flash and release.

Add Device

Tap “+” and select “Add Device”, then operate following the prompt on the App.

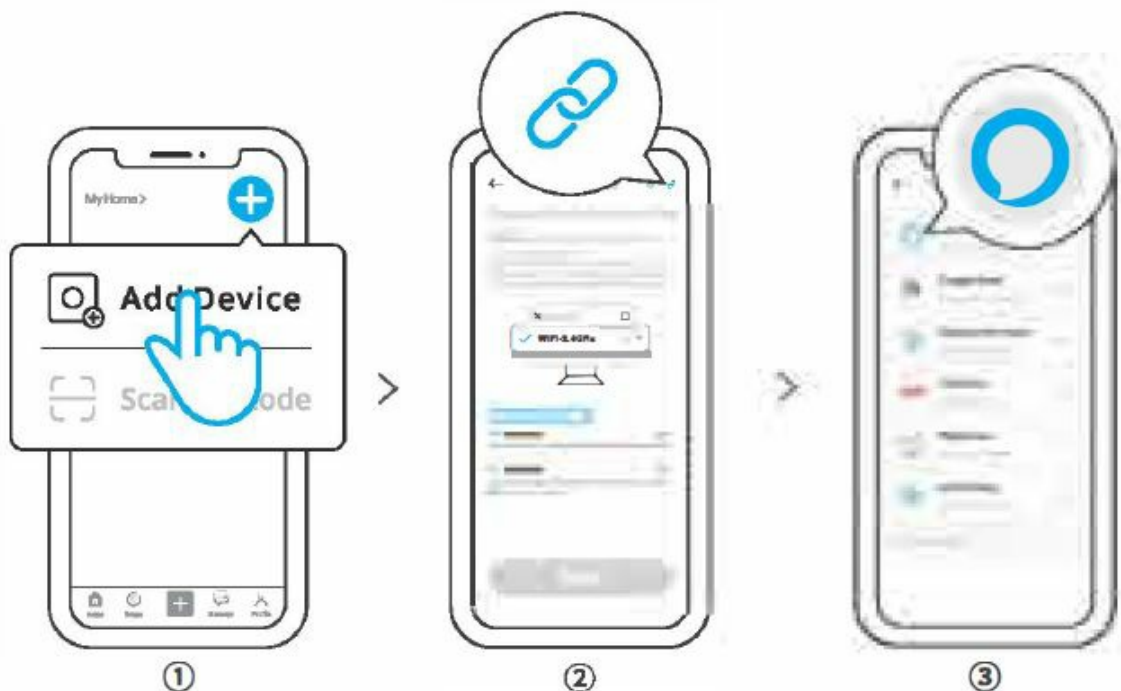


Guide to eWeLink and Alexa Accounts Linking



Amazon Alexa

1. Download the Amazon Alexa App and sign up an account.
2. Add Amazon Echo Speaker on the Alexa App.
3. Account Linking (Link Alexa account on the eWeLink App)



4. After linking the accounts, you can discover devices to connect on the Alexa App according the prompt.
5. Scan the QR code or visit the website to learn about the detailed user manual and help



<https://sonoff.tech/usermanuals>

FCC Warning

Changes or modifications not expressly approved by the party responsible for compliance could avoid the user's authority to operate the equipment. This device complies with part 15 of the FCC Rules. Operation is subject to the following two conditions

1. This device may not cause harmful interference
2. this device must accept any interference received, including interference that may cause undesired operation.

FCC Radiation Exposure Statement:

This equipment complies with FCC radiation exposure limits set forth for an uncontrolled environment. This equipment should be installed and operated with minimum distance 20cm between the radiator & your body. This transmitter must not be co-located or operating in conjunction with any other antenna or transmitter.

Note

- This equipment has been tested and found to comply with the limits for a Class B digital device, pursuant to part 15 of the FCC Rules.
- These limits are designed to provide reasonable protection against harmful interference in a residential

installation.

- This equipment generates, uses and can radiate radio frequency energy and, if not installed and used in accordance with the instructions, may cause harmful interference to radio communications. However, there is no guarantee that interference will not occur in a particular installation.
- If this equipment does cause harmful interference to radio or television reception, which can be determined by turning the equipment off and on, the user is encouraged to try to correct the interference by one or more of the following measures:
 - Reorient or relocate the receiving antenna.
 - Increase the separation between the equipment and receiver.
 - Connect the equipment into an outlet on a circuit different from that to which the receiver is connected.
 - Consult the dealer or an experienced radio/TV technician for help.



WEEE Disposal and Recycling Information

- All products bearing this emblem are waste (Directive 2012/19/EU) which should not be mixed with unsorted household waste.
- Instead, you should protect human health and the environment by handing over your waste equipment to a designated collection point for the recycling of waste electrical and electronic equipment, appointed by the government or local authorities.
- Correct disposal and recycling will help prevent potential negative consequences to the environment and human health.
- Please contact the installer or local authorities for more information about the location as well as terms and conditions of such collection points.

SAR Warning

Under normal use of condition, this equipment should be kept a separation distance of at least 20 cm between the antenna and the body of the user

EU Declaration of Conformity

- Hereby, Shenzhen Sonoff Technologies Co., Ltd. declares that the radio equipment type S26R2TPF/S26R2TPE/S26R2TPG/S26R2TPJ/S26R2TPH/ S26R2TPL/S26R2TPL-H are in compliance with Directive 2014/53/EU.
- The full text of the EU declaration of conformity is available at the following internet address:
<https://sonoff.tech/usermanuals>
- To ensure the safety of your electrical installation, it's essential either a Miniature Circuit Breaker (MCB) or a Residual Current Operated Circuit Breaker (RCBO) with an electrical rating of 10A has been installed before the S26R2.

Scatola	I	Manuale
PAP21	I	PAP22
Carta		Carta
RACCOLTA DIFFERENZIATA		
Varifocal component! In		

Shenzhen Sonoff Technologies Co., Ltd,
 1001, BLDGB, Lianhua Industrial Park, shenzhen, GD, China
 ZIP code: 518000 Website: sonoff.tech
MADE IN CHINA

Documents / Resources

	SONOFF S26R2 WiFi Smart Plug [pdf] User Guide S26R2, S26R2 WiFi Smart Plug, WiFi Smart Plug, Smart Plug, Plug
---	--

Manuals+.