



SONOFF S-MATE2 eWeLink-Remote Switch Mate User Manual

[Home](#) » [SonOFF](#) » SONOFF S-MATE2 eWeLink-Remote Switch Mate User Manual 

Contents

- [1 SONOFF S-MATE2 eWeLink-Remote Switch Mate](#)
- [2 Introduction](#)
- [3 DIP Switch](#)
- [4 Specification](#)
- [5 Smart Scenes](#)
- [6 FCC Warning](#)
- [7 Documents / Resources](#)
 - [7.1 References](#)
- [8 Related Posts](#)



SONOFF S-MATE2 eWeLink-Remote Switch Mate



Introduction

S-MATE2 is a battery-powered switch that can be used to connect ordinary rocker or pulse switches without the need for a neutral line. It can be used as an eWeLink-Remote sub-device and added to the eWeLink-Remote gateway for local control. In addition, it can achieve smart device linkage by setting up smart scenes.

DIP Switch

- LED Indicator: Flash once quickly when the external switch status changes
- LED Indicator: Flash 3 times quickly after successfully Switching the external switch type
- LED Indicator: Flash 3 times quickly when the external switch status changes and the device is in a low battery state

Specification

- Model: S-MATE2
- MCU Input: 3.0V
- Wireless Connectivity: 2.4G
- Battery Model: CR2477
- Net Weight: 26.8g
- Dimension: 40.3×37.4×18.3mm
- Color: White
- Casing Material: ABS
- Applicable Place: Indoor
- Working Temperature: -10 ~ 40°C
- Working Humidity: 5% ~ 95% RH, non-condensing
- Certified Compliance: CE/FCC/ISED/RoHS

Installation

1. Take out the battery insulation sheet.
2. Power off the device.
3. Follow the wiring instructions provided.
4. Caution: Install and maintain the device by a professional electrician. Do not operate any connection or contact the terminal connector while the device is powered on to avoid electric shock hazards.

Add Device

1. Click “...” on the homepage of the supporting gateway.
2. Click “eWeLink-Remote-devices” in the Device Settings.
3. Click the “Add” button, and the eWeLink-Remote gateway will enter the learning mode.
4. Click the sub-device button within 10 seconds.
5. Click the button on the sub-device to add the device.

Smart Scenes

The eWeLink-Remote sub-device can only be used as a triggering device, rather than an executing device.

1. Select “+” on the scene page to add a new scene.
2. Select “Add triggers”.
3. Select “Smart Device”.
4. Select “S-MATE2” and follow the steps to configure the conditions.
5. Add the linked device.
6. Complete the scene setup.

Compatible eWeLink-Remote Gateway

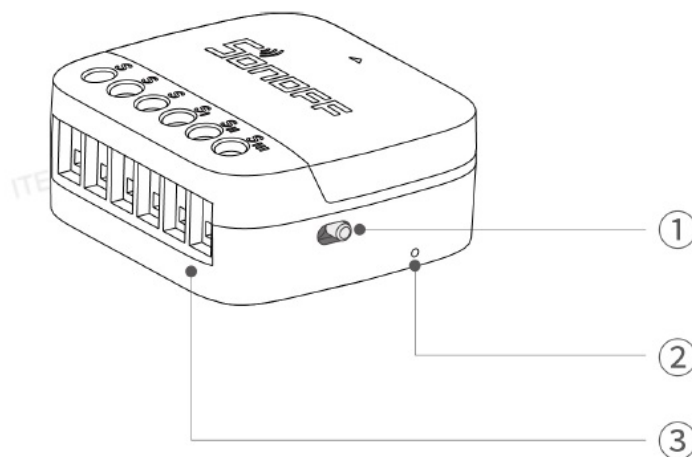
This device is connected to a regular switch and used together with a product that provides an eWeLink-Remote gateway function. For compatible products, please visit [this website](#).

FCC Warning

This equipment has been tested and found to comply with the limits for a Class B digital device, pursuant to Part 15 of the FCC Rules. These limits are designed to provide reasonable protection against harmful interference in a residential installation. This equipment generates, uses, and can radiate radio frequency energy and, if not installed and used in accordance with the instructions, may cause harmful interference to radio communications. However, there is no guarantee that interference will not occur in a particular installation. If this equipment does cause harmful interference to radio or television reception, which can be determined by turning the equipment off and on, the user is encouraged to try to correct the interference by one or more of the following measures: (1) Reorient or relocate the receiving antenna. (2) Increase the separation between the equipment and receiver. (3) Connect the equipment to an outlet on a circuit different from that to which the receiver is connected.

Introduction

S-MATE2 is a battery-powered switch that can be used to connect ordinary rocker or pulse switches without the need for a neutral line. It can be used as an eWeLink-Remote sub-device and added to the eWeLink-Remote gateway for local control. In addition, it can achieve smart device linkage by setting up smart scenes.



DIP Switch

LED Indicator

- Flash once quickly External switch status changes
- Flash 3 times quickly External switch type is successfully switched

- Flash 3 times quicklyExternal switch status changes and the device is in a low battery state
- Wiring ports

DIP Switch

The factory default mode of this device is Rocker switch mode Figure① . If the device is connected to a momentary switch, please turn the dip switch to the left Figure② , the LED indicator will flash 3 times quickly after the switch mode is successfully switched

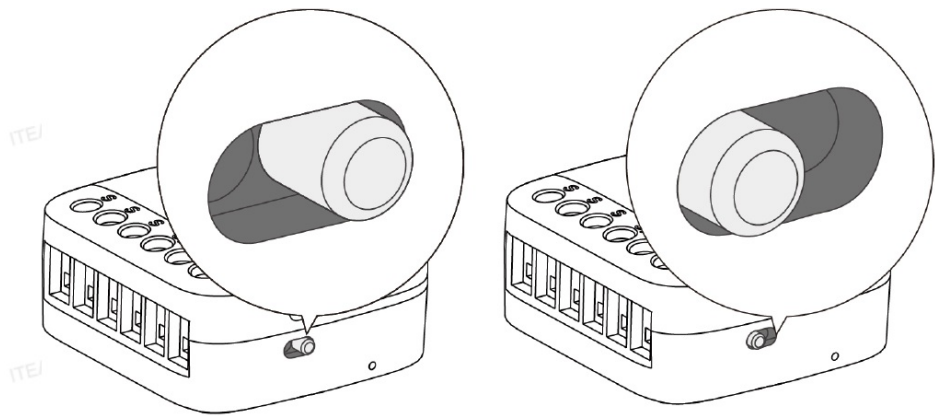


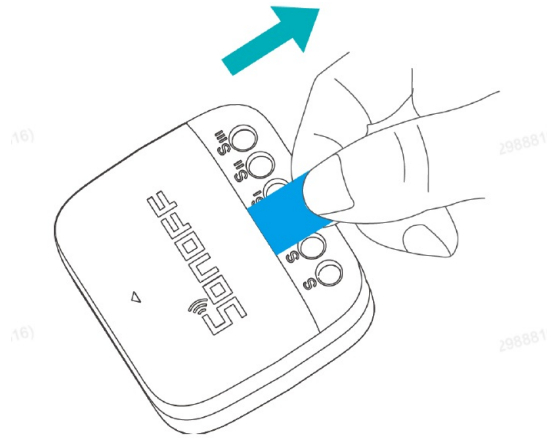
Figure Rocker switch mode
Figure Momentary switch mode

Specification

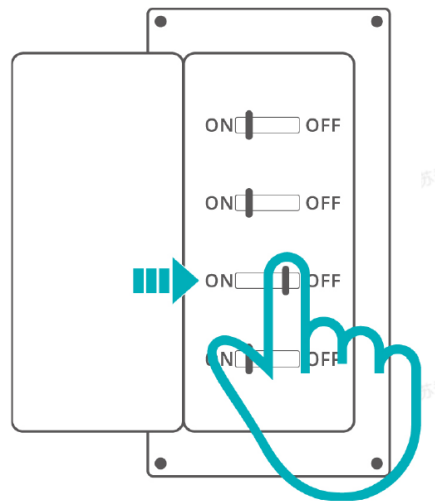
Model	S-MATE2
MCU	AK803
Input	3.0V
Wireless Connectivity	2.4G
Battery Model	CR2477
Net Weight	26.8g
Dimension	40.3×37.4×18.3mm
Color	White
Casing Material	ABS
Applicable Place	Indoor
Working Temperature	-10℃~40℃
Working Humidity	5%~95% RH, non-condensing
Certified Compliance	CE/FCC/ISED/RoHS

Installation

1. Take out the battery insulation sheet.



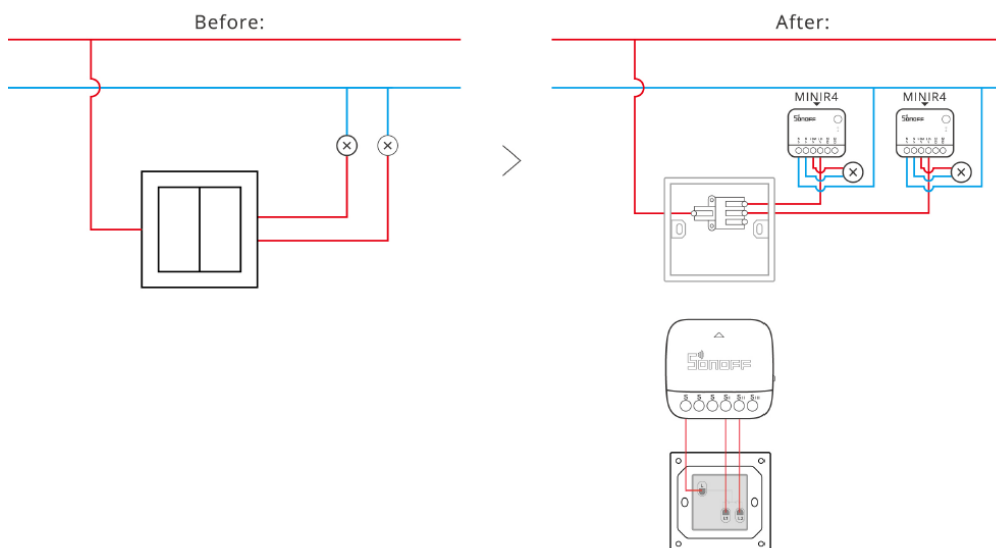
2. Power off



Please install and maintain the device by a professional electrician. To avoid electric shock hazards, do not operate any connection or contact the terminal connector while the device is powered on!

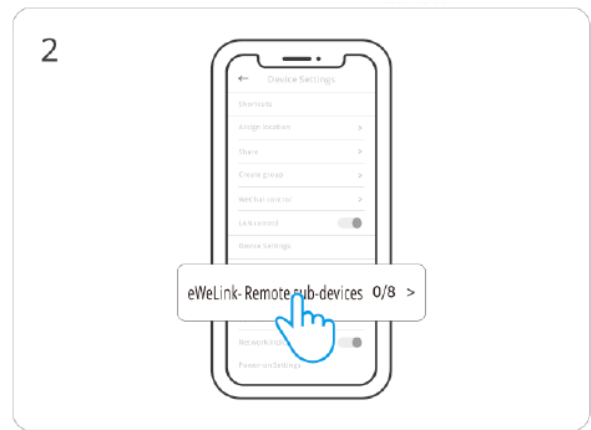
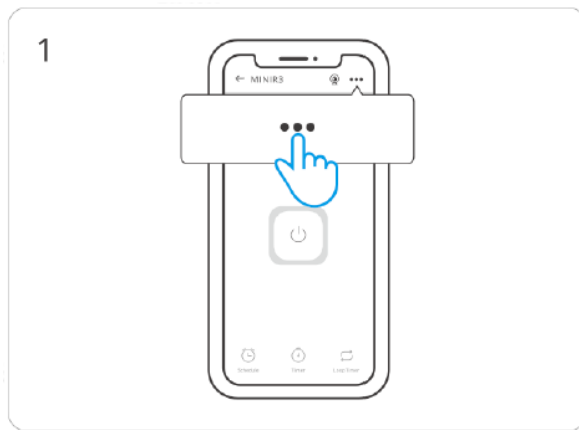
Wiring instruction

S-MATE2 needs to work with the link remote gateway. (Here MINIR4 acts as the eWeLink remote gateway.)



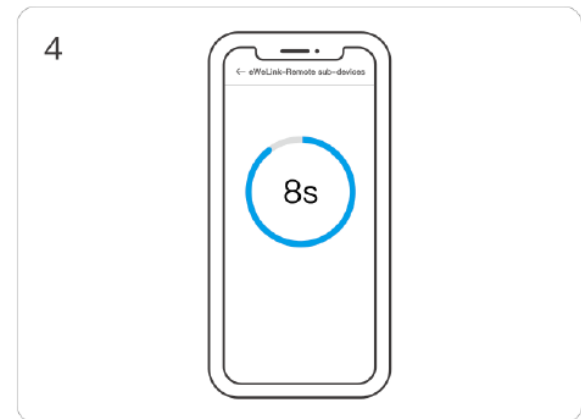
Add device

1. Click “...” on the homepage of the supporting gateway



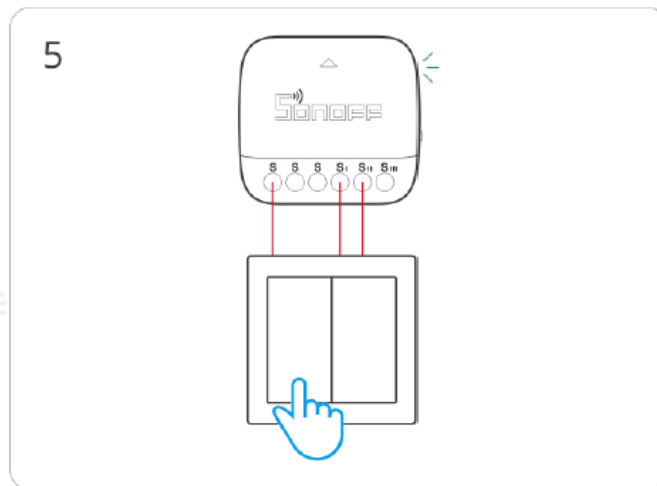
2. Click “eWeLink-Remote-devices” in the

3. Device Settings Click the “Add” button, and the eWeLink-Remote gateway will enter the learning mode



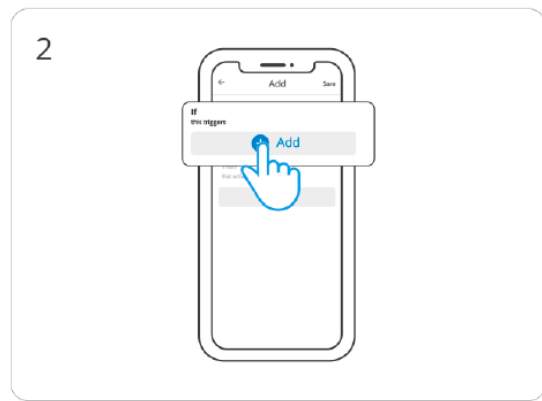
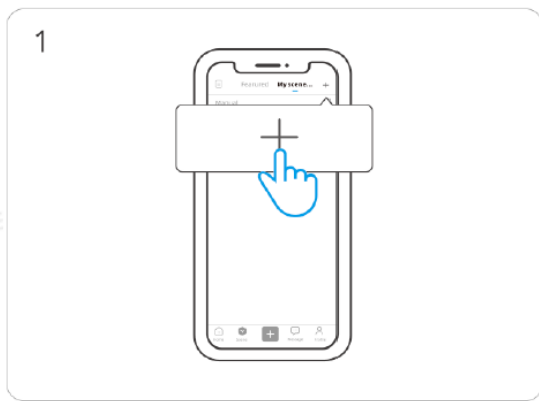
4. Click the sub-device button within 10 seconds

5. Click the button on the sub-device to add the device

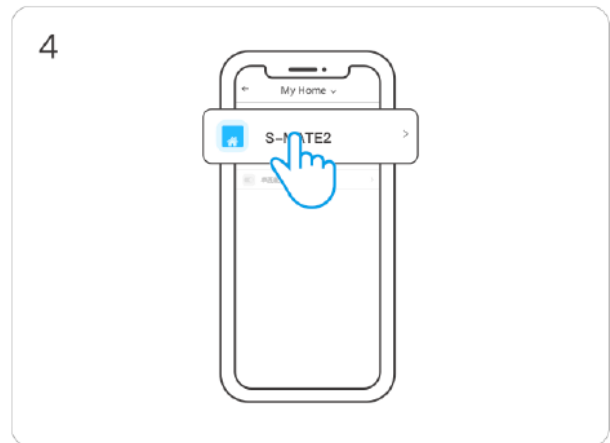


Smart Scenes

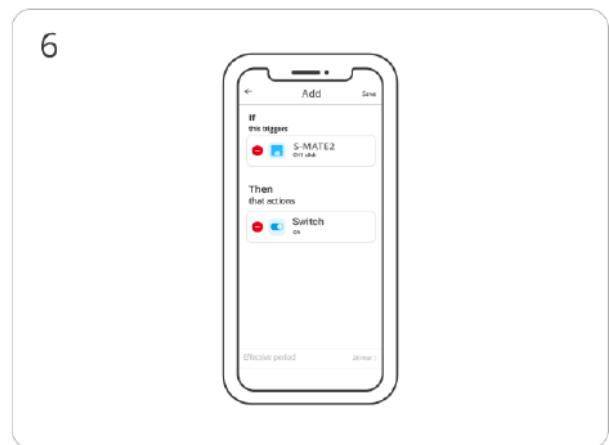
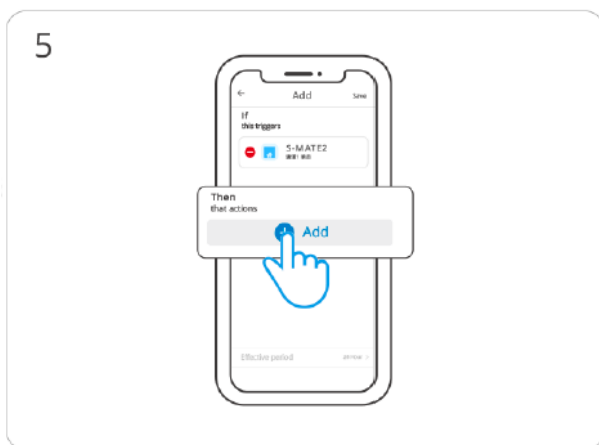
The eWeLink-Remote sub-device can only be used as a triggering device, rather than an executing device



1. Select “+” on the scene page to
2. add a new scene Select “Add” triggers
3. Select “Smart Device” Select
4. “S-MATE2” and follow the steps to configure the conditions



5. Add the linked device



AD - 苏登(2988816)

Add the linked device

苏登(2988816)

Complete the scene setup

6. Complete the scene setup

Compatible eWeLink-Remote gateway



<https://sonoff.tech/product-review/product-insight/what-is-ewelink-remote-control/>This device is connected to a regular switch and used together with a product that provides an eWeLink-Remote gateway function. Click on the image or enter the website address to view compatible products.

Scatola	Manuale
PAP 21	PAP 22
Carta	Carta
RACCOLTA DIFFERENZIATA	
Verifica le disposizioni del tuo Comune.	
Separa le componenti e conferiscile in modo corretto.	

FCC Warning

This device complies with part 15 of the FCC Rules. Operation is subject to the following two conditions:

- (1) This device may not cause harmful interference, and
 - (2) This device must accept any interference received, including interference that may cause undesired operation.
- Changes or modifications not expressly approved by the party responsible for compliance could void the user's authority to operate the equipment.

Note: This equipment has been tested and found to comply with the limits for a Class B digital device, pursuant to part 15 of the FCC Rules. These limits are designed to provide reasonable protection against harmful interference in a residential installation. This equipment generates, uses, and can radiate radio frequency energy and, if not installed and used in accordance with the instructions, may cause harmful interference to radio communications. However, there is no guarantee that interference will not occur in a particular installation. If this equipment does cause harmful interference to radio or television reception, which can be determined by turning the equipment off and on, the user is encouraged to try to correct the interference by one or more of the following measures:

- Reorient or relocate the receiving antenna.
- increase the separation between the equipment and the receiver.
- connect the equipment to an outlet on a circuit different from that to which the receiver is connected.
- consult the dealer or an experienced radio/TV technician for help.

FCC Radiation Exposure Statement

This equipment complies with FCC radiation exposure limits set forth for an uncontrolled environment. This

equipment should be installed and operated with a minimum distance of 20 cm between the radiator and your body. This transmitter must not be co-located or operating in conjunction with any other antenna or transmitter.

ISED Notice

This device contains license-exempt transmitter(s)/receiver(s) that comply with Innovation, Science, and Economic Development Canada's license-exempt RSS(s). Operation is subject to the following two conditions: This device may not cause interference. This device must accept any interference, including interference that may cause undesired operation of the device. This Class B digital apparatus complies with Canadian ICES-003.

ISED Radiation Exposure Statement

This equipment complies with ISED radiation exposure limits set forth for uncontrolled environments. This equipment should be installed and operated with a minimum distance of 20 cm between the radiator and your body.

This transmitter must not be co-located or operating in conjunction with any other antenna or transmitter. SAR Warning Under normal use of conditions, this equipment should be kept a separation distance of at least 20cm between the antenna and the body of the user.

WEEE Warning

WEEE Disposal and Recycling Information All products bearing this symbol are waste electrical and electronic equipment (WEEE as in directive 2012/19/EU) which should not be mixed with unsorted household waste. Instead, you should protect human health and the environment by handing over your waste equipment to a designated collection point for the recycling of waste electrical and electronic equipment, appointed by the government or local authorities. Correct disposal and recycling will help prevent potential negative consequences to the environment and human health. Please contact the installer or local authorities for more information about the location as well as the terms and conditions of such collection points

EU Declaration of Conformity

Hereby, Shenzhen Sonoff Technologies Co., Ltd. declares that the radio equipment type SMATE2 is in compliance with Directive 2014/53/EU. The full text of the EU Declaration of Conformity is available at the following internet address: <https://sonoff.tech/usermanuals> Do not ingest battery, Chemical Burn Hazard. This product contains a coin/button cell battery.

If the coin/button cell battery is swallowed, it can cause severe internal burns in just 2 hours and can lead to death. Keep new and used batteries away from children. If the battery compartment does not close securely, stop using the product and keep it away from children. If you think batteries might have been swallowed or placed inside any part of the body, seek immediate medical attention. Replacement of a battery with an incorrect type can defeat a safeguard (for example, in the case of some lithium battery types). Disposal of a battery into a fire or a hot oven, or mechanically crushing or cutting of a battery, that can result in an explosion. Leaving a battery in an extremely high-temperature surrounding environment can result in an explosion or the leakage of flammable liquid or gas. A battery subjected to extremely low air pressure may result in an explosion or leakage of flammable liquid or gas. For CE Frequency: Operation Frequency:2426MHz RF Output Power:≤10dBm Shenzhen Sonoff Technologies Co., Ltd.


3F & 6F, Bldg A, No. 663, Bulong Rd, Shenzhen, Guangdong, China

ZIP code: 518000

Website: sonoff.tech

Service email: support@itead.cc

Documents / Resources

	<p>SONOFF S-MATE2 eWeLink-Remote Switch Mate [pdf] User Manual</p> <p>S-MATE2, S-MATE2 eWeLink-Remote Switch Mate, eWeLink-Remote Switch Mate, Switch Mate</p>
---	--

References

-  [What is eWeLink-Remote Control? - SONOFF Official](#)

Manuals+.