

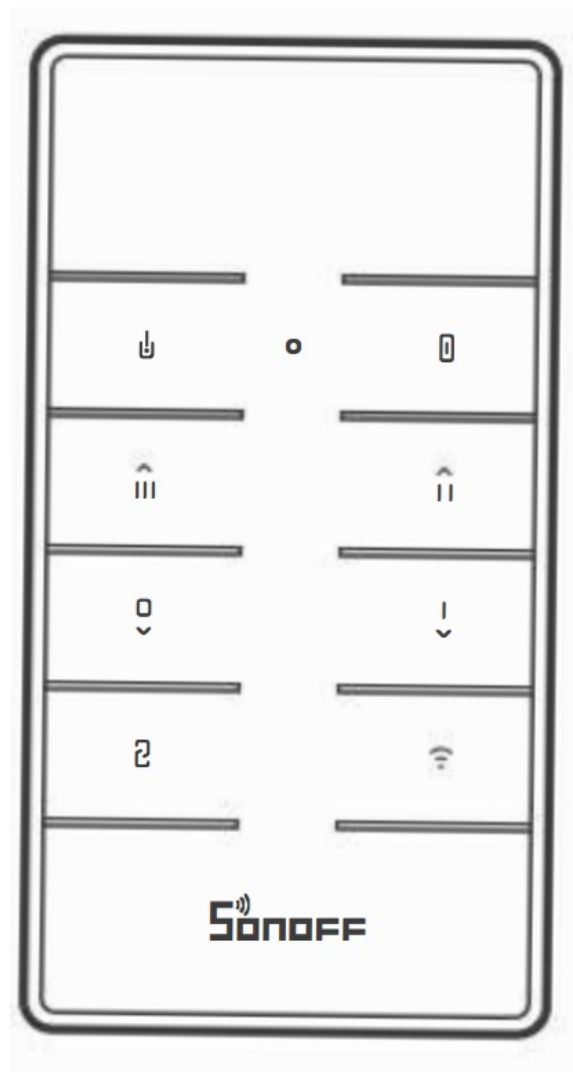
# SONOFF RM433R2 433M Hz Remote Controller User Manual

[Home](#) » [SonOFF](#) » SONOFF RM433R2 433M Hz Remote Controller User Manual 

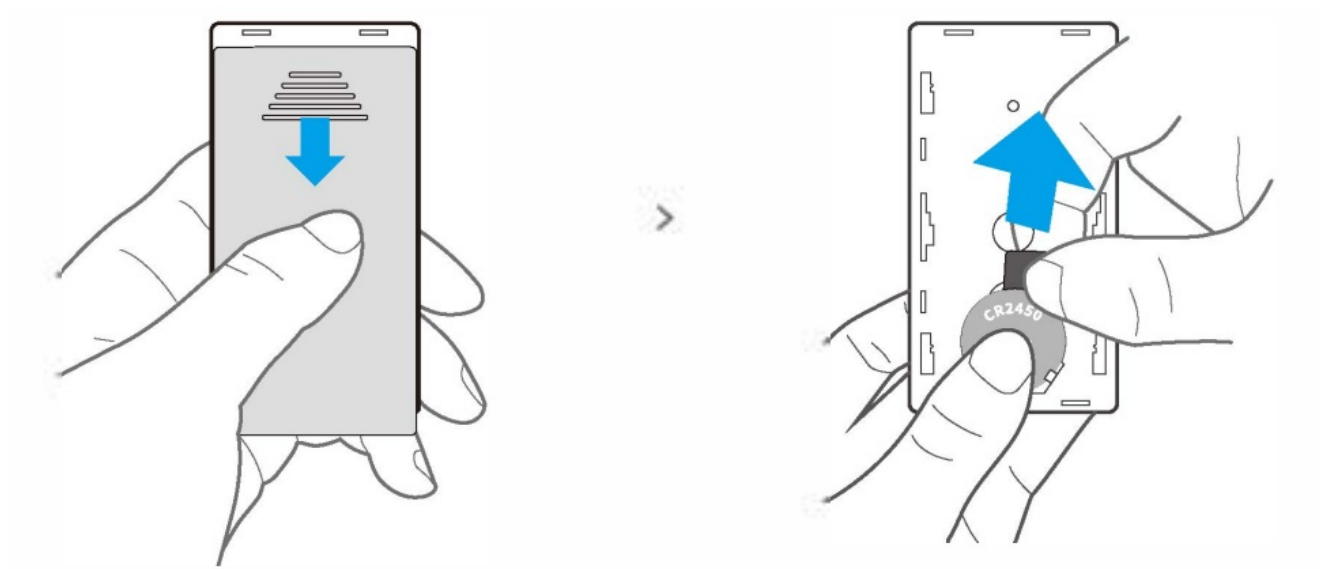
## Contents

- 1 SONOFF RM433R2 433M Hz Remote Controller
- 2 Pull out the battery insulation sheet
- 3 Product Introduction
- 4 Buttons Instructions
  - 4.1 Example 1: iFan04 Wi-Fi Fan & Light Controller
  - 4.2 Example 2: D1 Wi-Fi smart dimmer
- 5 Works with SON OFF devices
- 6 RM433R2-BASE
  - 6.1 Installation method 1:
  - 6.2 Installation method 2:
- 7 FCC Warning
  - 7.1 FCC Radiation Exposure Statement:
- 8 Documents / Resources
- 9 Related Posts

**SONOFF RM433R2 433M Hz Remote Controller**



**Pull out the battery insulation sheet**



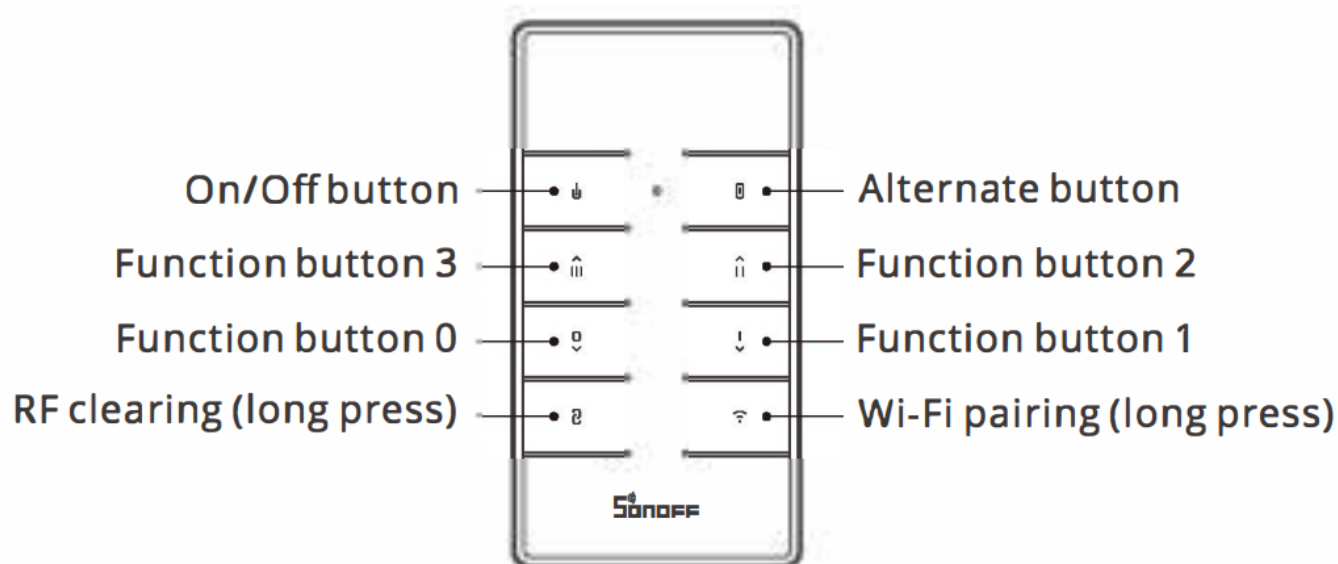
ⓘ The device has the version with battery and without battery.

Specifications

<b>Model</b>	<b>RM433R2</b>
RF	433MHz
Remote controller size	87x48x12mm
Remote controller base size	86x86x15mm (not included)
Power supply	3V button cell x 1 (Battery model: CR2450)
Material	PC VO

## Product Introduction









The RM433R2 applies to all SON OFF products with 433M Hz frequency and other devices supporting the 433M Hz communication protocol.











Buttons are created with different functions when pairing with different products.

## Buttons Instructions

**Example 1: iFan04 Wi-Fi Fan & Light Controller**

Buttons	Functions
	On/Off(light)
	Mute
	Off(fan)
	Low speed
	Medium speed
	High speed
	<p>Long press for 5s until the ceiling fan makes two sounds “Beep Beep” to clear the code.</p> <p>After clearing code is completed, if you need to use the product, please press any button within 5s after powering on again until the ceiling fan makes a sound “Beep”, and pairing is successful.</p>
	<p>Long press for 5s until the fan makes two short and one long “Beep” sound to enter the quick pairing mode (Touch).</p> <p>Then you can add the device on eWelinkAPP. In quick pairing mode, you can short press any button on the remote controller to exit this mode.</p>

#### Example 2: D1 Wi-Fi smart dimmer

Buttons	Functions
	On
	Off
	Short press for the low brightness, long press to turn down the brightness
	Short press for the medium brightness, long press to turn down the brightness
	Short press for the higher brightness, long press to turn up the brightness
	Short press for the high brightness, long press to turn up the brightness
	<p>Long press for 5s until you hear “Beep Beep” and release, then the remote controller is cleared successfully.</p> <p>After clearing code is completed, if you need to use, short press any button within 5s after powering on again and you will hear “Beep”, which indicates the remote controller is paired successfully.</p>
	Long press for 5s until the connected light enters the breathing mode, which indicates the device enters quick pairing mode (Touch), then you can add the light on eWelinkAPP. In quick pairing mode, you can short press any button on the remote controller to exit this mode.

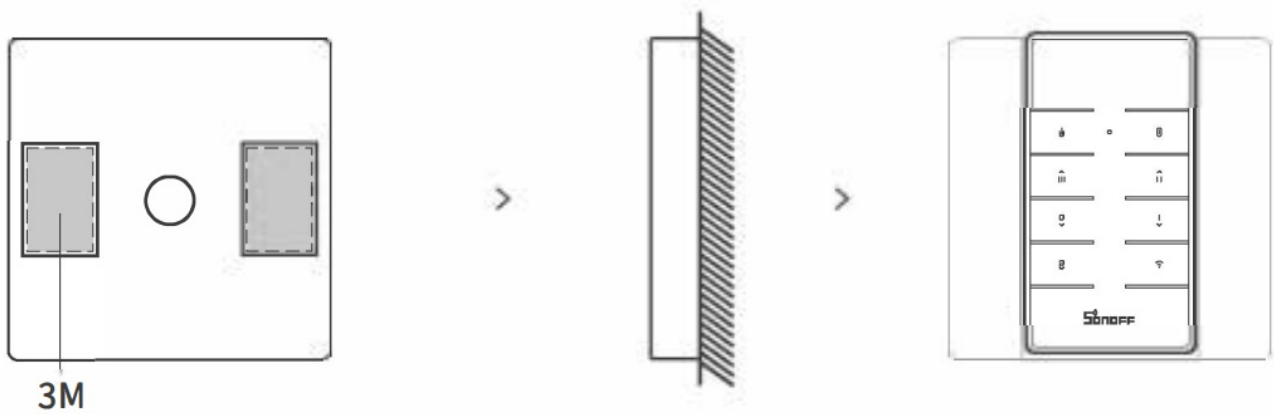
## Works with SON OFF devices

- RFR2
- BASICRFR3
- 4CHPROR3
- SlampherR2
- RF BridgeR2
- D1 Wi-Fi smart dimmer
- TX series Wi-Fi smart switches
- iFan04 Wi-Fi Fan & Light Controller

## RM433R2-BASE

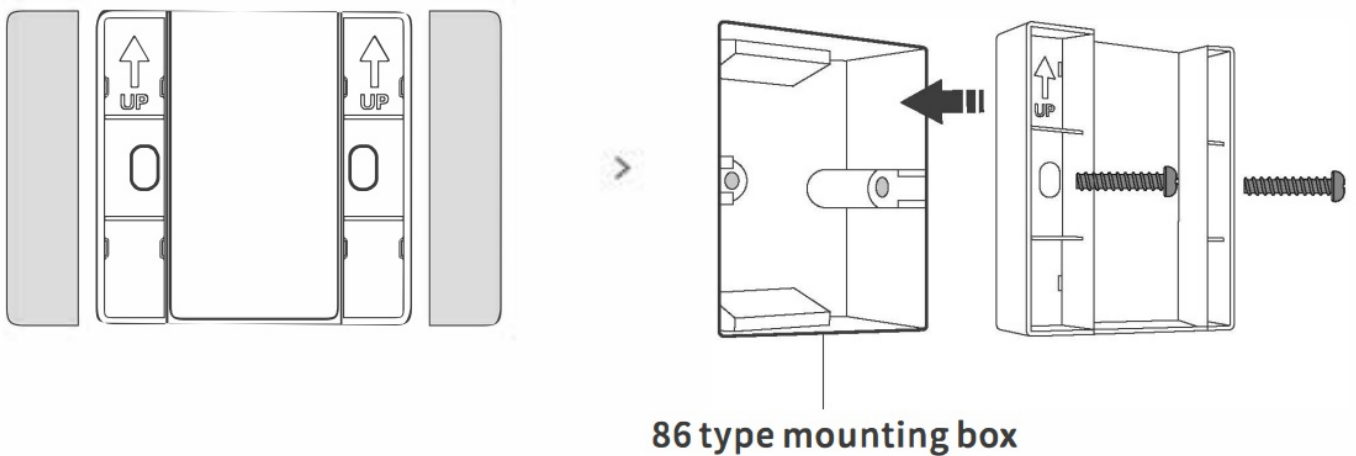
### Installation method 1:

Install the base on the wall with 3M adhesive tapes.



#### Installation method 2:

Remove the two upper covers from both sides of the base to install with screws.



The base is not included into the package, please purchase it separately.

#### FCC Warning

Changes or modifications not expressly approved by the party responsible for compliance could avoid the user's authority to operate the equipment.

This device complies with part 15 of the FCC Rules. Operation is subject to the following two conditions: (1) This device may not cause harmful interference, and (2) this device must accept any interference received, including interference that may cause undesired operation.

#### FCC Radiation Exposure Statement:

The device has been evaluated to meet general RF exposure requirement. The device can be used in portable exposure condition without restriction.

#### Note

This equipment has been tested and found to comply with the limits for a Class B digital device, pursuant to part 15 of the FCC Rules. These limits are designed to provide reasonable protection against harmful interference in a residential installation. This equipment generates, uses and can radiate radio frequency energy and, if not installed and used in accordance with the instructions, may cause harmful interference to radio communications. However, there is no guarantee that interference will not occur in a particular installation. If this equipment does

cause harmful interference to radio or television reception, which can be determined by turning the equipment off and on, the user is encouraged to try to correct the interference by one or more of the following measures:

- Reorient or relocate the receiving antenna.
- Increase the separation between the equipment and receiver.
- Connect the equipment into an outlet on a circuit different from that to which the receiver is connected.
- Consult the dealer or an experienced radio/TV technician for help.

Hereby, Shenzhen SonoffTechnologies Co., Ltd. declares that the radio equipment type RM433R2 is in compliance with Directive 2014/53/EU. The full text of the EU declaration of conformity is available at the following internet address:

<https://sonoff.tech/usermanuals>

**Shenzhen SonoffTechnologies Co., Ltd.**

1001, BLDG8, Lianhua Industrial Park, shenzhen, GD, China


**ZIP code:** 518000

**Website:** sonoff.tech

MADE IN CHINA



## Documents / Resources

	<p><a href="#">SONOFF RM433R2 433M Hz Remote Controller</a> [pdf] User Manual RM433R2 433M Hz Remote Controller, RM433R2, 433M Hz Remote Controller, Remote Controller, Controller</p>
---	--