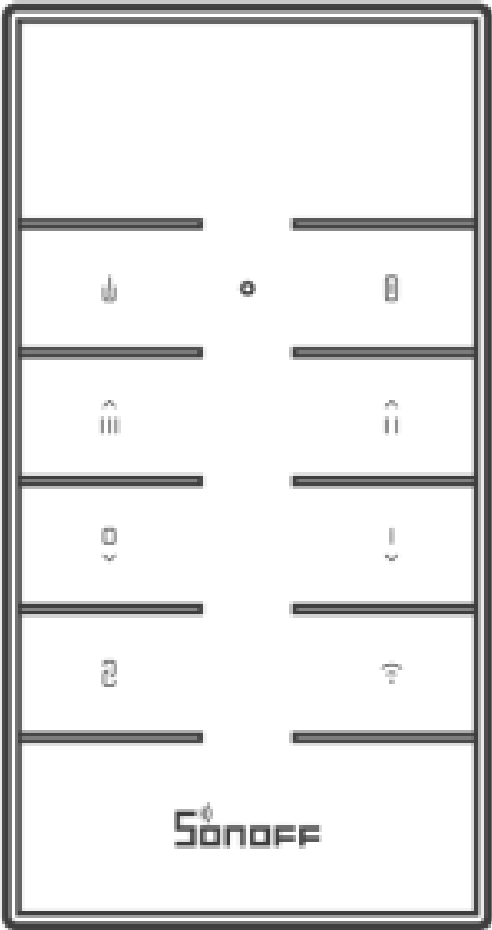




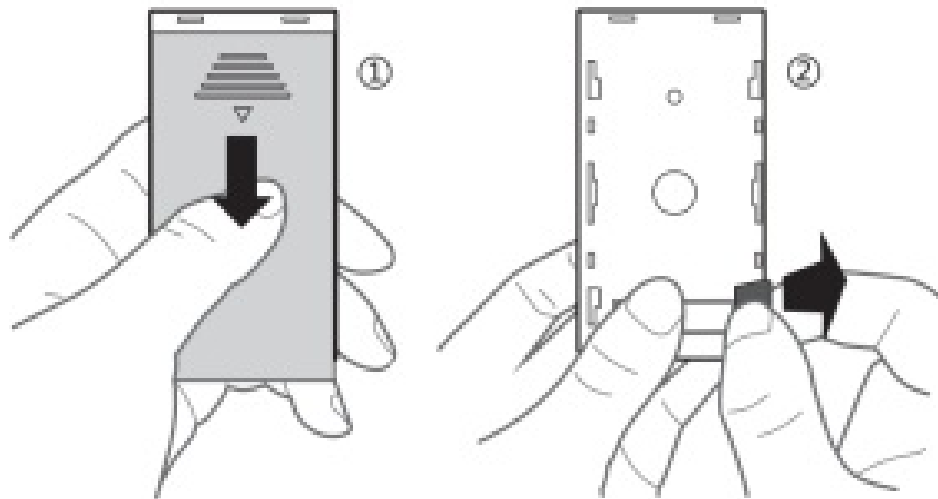
SONOFF RM433 Remote Control + Base User Manual

[Home](#) » [SonOFF](#) » SONOFF RM433 Remote Control + Base User Manual 



433MHz remote controller

Punt out the battery insulation sheet

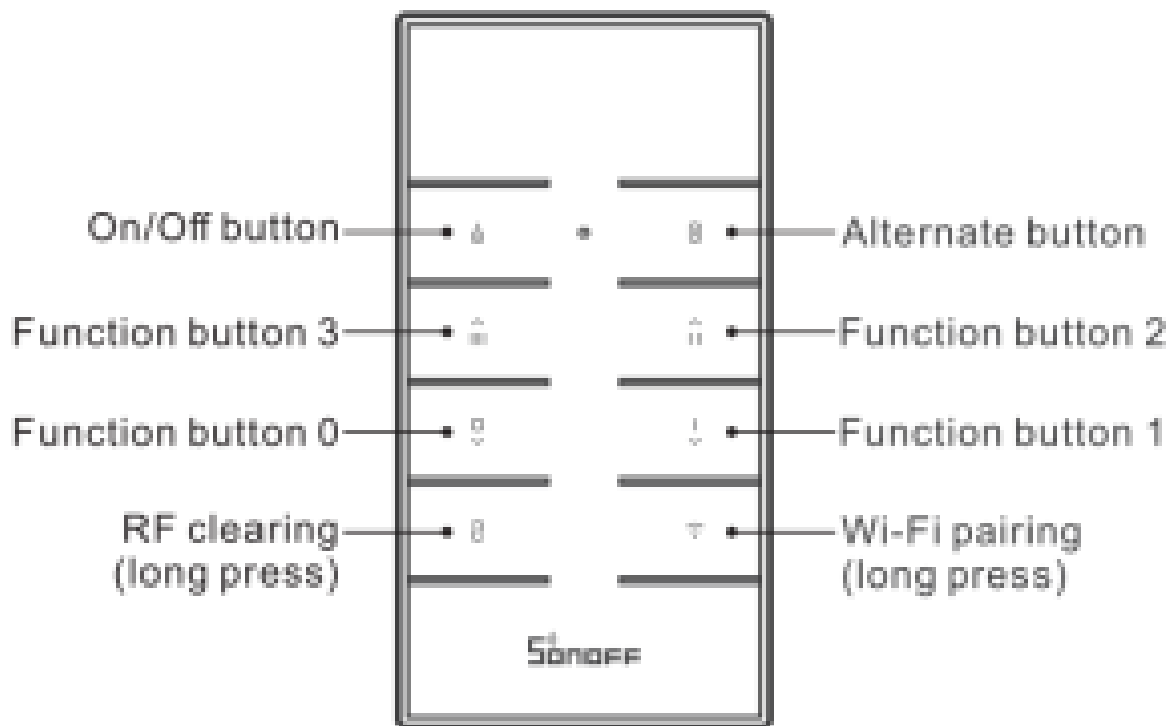


Contents

- [1 Product Introduction](#)
- [2 works with SONOFF devices:](#)
- [3 RM433-Base: Installation methods](#)
- [4 User Manual](#)
- [5 FCC Warning](#)
- [6 Documents / Resources](#)
- [7 Related Posts](#)

Product Introduction

The RM433 applies to all SONOFF products with 433MHz frequency and other devices supporting the 433MHz communication protocol



Buttons are created with different functions when pairing with different products

works with SONOFF devices:

- BASICRFR3
- SlampherR2
- RFR2
- 4CHPROR3
- D1Wi-Fi Smart Dimmer Switch
- TX series Wi-Fi smart switches
- iFan03 Wi-Fi Fan & Light Controller
- Other devices supporting the 433MHz communication protocol

LIKE IT!

Glad to know you are satisfied with SONOFF products.

It would mean a lot to us if you can take a minute to share your buying experience.



Share it with your friends and family

Get the latest news by following us:

New arrival Promotion How-to videos

HAVE A PROBLEM?

We are so sorry for the inconvenience caused by the product. Please contact us for help via the email address below.



support@itead.cc

We will get back to you as soon as possible.



YouTube

https://www.youtube.com/channel/UC1EsS_wR0_isqSbbN-ZM8GA



facebook

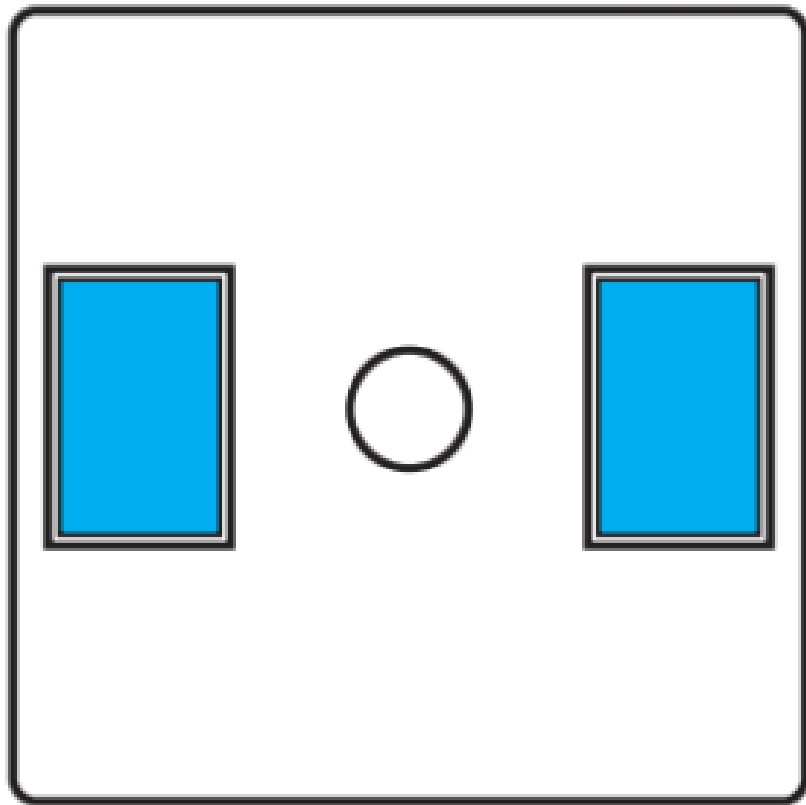
<https://www.facebook.com/SONOFF.official/>

RM433-Base: Installation methods

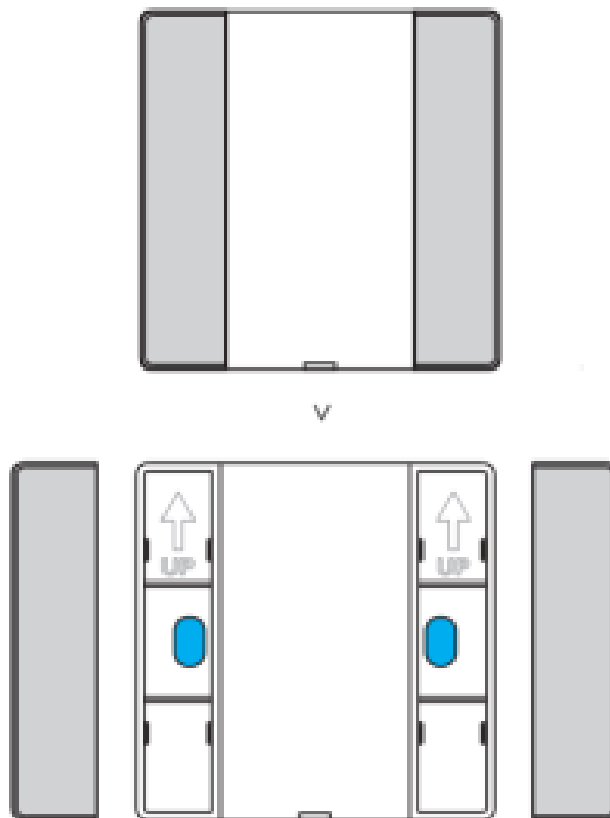


The base is not included in the package, please purchase it separately

1. Install the base on the wall with 3M adhesive tapes



2. Remove the two upper covers from both sides of the base to install with screws



User Manual

Scan the QR code or visit the website to learn about the detailed user manual and help



<https://www.sonoff.tech/usermanuals>

FCC Warning

Changes or modifications not expressly approved by the party responsible for compliance could avoid the user's authority to operate the equipment.

This device complies with part 15 of the FCC Rules.

Operation is subject to the following two conditions:

1. This device may not cause harmful interference, and
2. this device must accept any interference received, including interference that may cause undesired operation.

FCC Radiation Exposure Statement:

This equipment complies with FCC radiation exposure limits set forth for an uncontrolled environment. This equipment should be installed and operated with a minimum distance of 20cm between the radiator & your body. This transmitter must not be co-located or operating in conjunction with any other antenna or transmitter.

Note:

This equipment has been tested and found to comply with the limits for a Class B digital device, pursuant to part 15 of the FCC Rules. These limits are designed to provide reasonable protection against harmful interference in a residential installation. This equipment generates, uses, and can radiate radio frequency energy and, if not installed and used in accordance with the instructions, may cause harmful interference to radio communications. However, there is no guarantee that interference will not occur in a particular installation. If this equipment does cause harmful interference to radio or television reception, which can be determined by turning the equipment off and on, the user is encouraged to try to correct the interference by one or more of the following measures:

- Reorient or relocate the receiving antenna.
- Increase the separation between the equipment and
- Connect the equipment into an outlet on a circuit different from that to which the receiver is connected.

Hereby, Shenzhen Sonoff Technologies Co., Ltd.

declares that the radio equipment type RM433 is in compliance with Directive 2014/53/EU. The full text of the EU declaration of conformity is available at the following internet address: <https://www.sonoff.tech/usermanuals>


RF Output Power: 4.88dBm EIRP

TX Frequency: SRD:433.92MHz

1001, BLDG8, Lianhua Industrial Park, shenzhen,
GD, China
ZIP code: 518000
Website: sonoff.tech
MADE IN CHINA



Documents / Resources

	SONOFF RM433 Remote Control + Base [pdf] User Manual RM433, Remote Control Base
---	--