



SONOFF RF BridgeR2 433MHz Replacement Smart Home Automation Universal Switch User Manual

[Home](#) » [SonOFF](#) » SONOFF RF BridgeR2 433MHz Replacement Smart Home Automation Universal Switch User Manual 

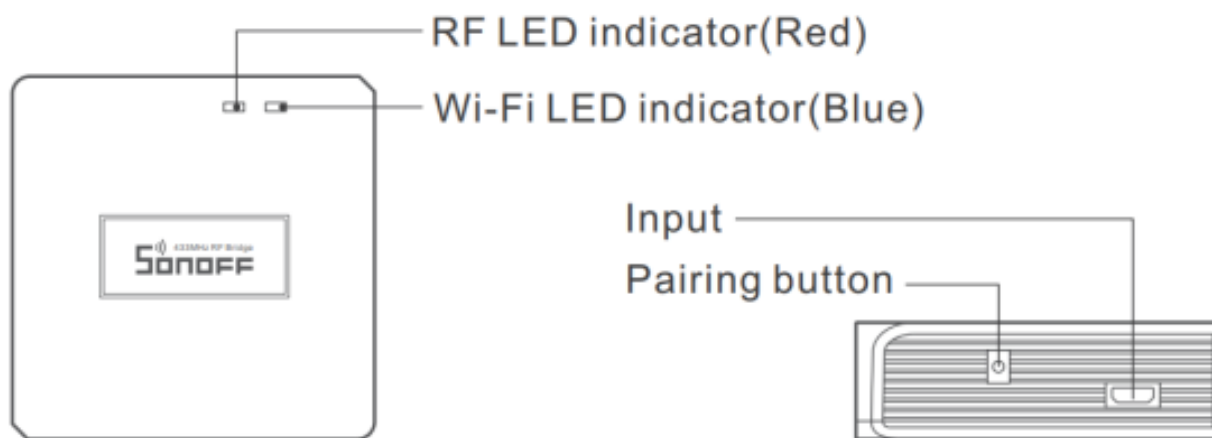
SONOFF RF BridgeR2 433MHz Replacement Smart Home Automation Universal Switch User Manual



Contents

- [1 Product Introduction](#)
- [2 LED indicator status instruction](#)
- [3 Features](#)
- [4 Operating Instruction](#)
- [5 Compatible Pairing Mode](#)
- [6 Learn 433MHz codes](#)
- [7 Specifications](#)
- [8 Switch Network](#)
- [9 Factory Reset](#)
- [10 Common Problems](#)
- [11 Documents / Resources](#)
- [12 Related Posts](#)

Product Introduction



The device weight is less than 1 kg.

The installation height of less than 2 m is recommended.

LED indicator status instruction

LED indicator status	Status instruction
Blue LED flashes (one long and two short)	Quick Pairing Mode
Blue LED flashes quickly	Compatible Pairing Mode (AP)
Blue LED keeps on	Device is connected successfully
Blue LED flashes quickly once	Unable to discover the router
Blue LED flashes quickly twice	Connect to the router but fail to connect to WiFi
Blue LED flashes quickly three times	Upgrading
Red LED flashes quickly	Searching and adding ...

Features

This is a 433MHz RF bridge with multiple features that allows you to connect a variety of 433MHz wireless devices through switching 433MHz to Wi-Fi. You can set schedules, countdowns, alarm notifications and more.

- Remote Control



- Single/Countdown Timing



- Voice Control



- Share Control



- Sync Status



- Alarm notification



- Smart Scene



- Camera Feature

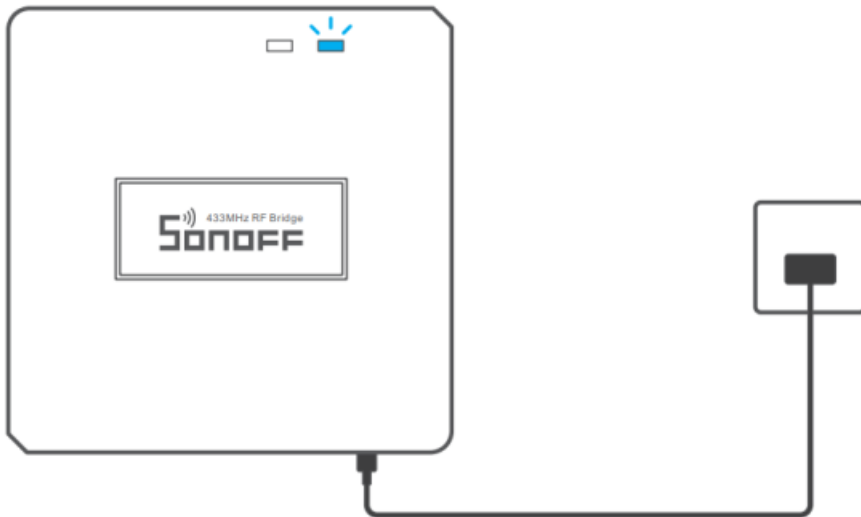


Operating Instruction

1. Download “eWeLink” APP



2. Power on

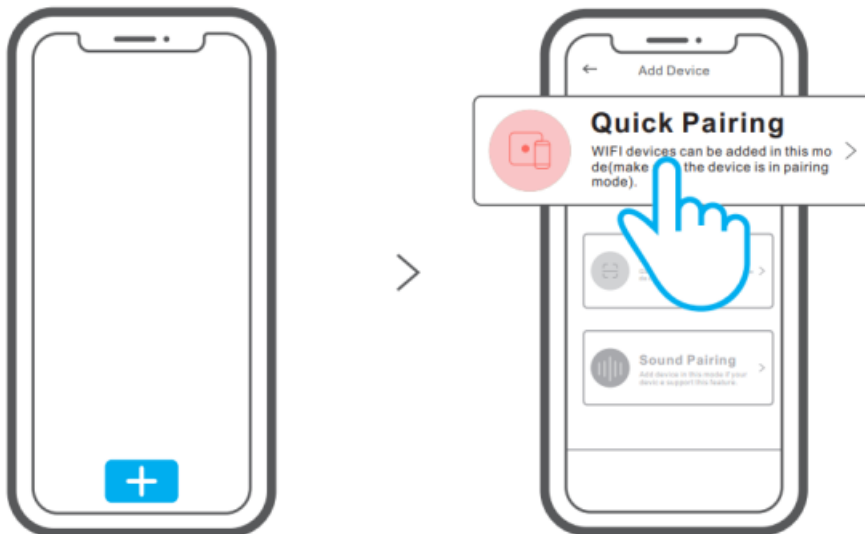


Use the Micro USB cable to power the device, After powering on, the device will enter the quick pairing mode during the first use. The Wi-Fi LED indicator changes in a cycle of two short and one long flash.



The device will exit the quick pairing mode (Touch) if not paired within 3mins. If you want to enter this mode, please long press the pairing button for about 5s until the Wi-Fi LED indicator changes in a cycle of two short and one long flash and release.

3. Add Bridge



Tap "+" and select "Quick Pairing", then operate following the prompt on the APP.

Compatible Pairing Mode

If you fail to enter Quick Pairing Mode, please try "Compatible Pairing Mode " to pair.

1. Long press Pairing button for 5s until the Wi-Fi LED indicator changes in a cycle of two short flashes and one long flash and release. Long press Pairing button for 5s again until the Wi-Fi LED indicator flashes quickly. Then, the device enters Compatible Pairing Mode.
2. Tap "+" and select "Compatible Pairing Mode " on APP. Select Wi-Fi SSID with ITEAD-***** and enter the password 12345678, and then go back to eWeLink APP and tap "Next". Be patient until pairing completes.

Learn 433MHz codes




Click “+”, select the type of remote control. The device enters the learning mode when you hear a beep from it, and then press the 433MHz remote control or trigger the sensor, and you will hear two beeps to complete the learning process.



Learn up to 64 433MHz codes.

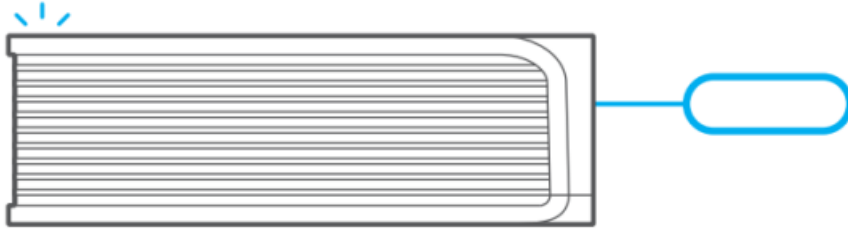
Specifications

Model	RF Bridge, RE BridgeR2
Input	5V  1A
RF	433MHz
Wi-Fi	IEEE 802.11 b/g/n 2.4GHz
Operating systems	Android & iOS
Working temperature	-10°C-40°C
Material	RF Bridge: ABS VO, RF BridgeR2: PC VO
Colors	RF Bridge: Black, RF BridgeR2: White
Dimension	62x62x20mm

Switch Network

If you need to change the network, long press the pairing button for 5s until the Wi-Fi LED indicator changes in a cycle of two short and one long flash and release, then the device enters quick pairing mode and you can pair

again.



Factory Reset

Deleting the device on the eWeLink app indicates you restore it to factory setting.

Common Problems

Q: Why my device stays “Offline”?

A: The newly added device needs 1 – 2mins to connect Wi-Fi and network. If it stays offline for a long time, please judge these problems by the blue Wi-Fi indicator status:

1. The blue Wi-Fi indicator quickly flashes once per second, which means that the switch failed to connect your Wi-Fi:
 1. Maybe you have entered a wrong Wi-Fi password.
 2. Maybe there's too much distance between the switch your router or the environment causes interference, consider getting close to the router. If failed, please add it again.
 3. The 5G Wi-Fi network is not supported and only supports the 2.4GHz wireless network.
 4. Maybe the MAC address filtering is open. Please turn it off.


If none of the above methods solved the problem, you can open the mobile data network on your phone to create a Wi-Fi hotspot, then add the device again.


2. Blue indicator quickly flashes twice per second, which means your device has connected to Wi-Fi but failed to connect to the server.

Ensure steady enough network. If double flash occurs frequently, which means you access an unsteady network, not a product problem. If the network is normal, try to turn off the power to restart the switch.



Documents / Resources


RF Bridge
User manual V1.2



433MHz RF Bridge

SE - Z	1-12	English	2-14
Revisions	1-12	English	16-20
Particulars	19-21	English	22-23
Product Code	20-21	Particulars	24-25
ICD Naming	22-23		

[SONOFF RF BridgeR2 433MHz Replacement Smart Home Automation Universal Switch](#) [pdf] User Manual

RF Bridge, RF BridgeR2, RF BridgeR2 433MHz Replacement Smart Home Automation Universal Switch, 433MHz Replacement Smart Home Automation Universal Switch