



SONOFF RF Bridge 433MHz RF-WiFi Bridge or Gateway Instruction Manual

[Home](#) » [SonOFF](#) » SONOFF RF Bridge 433MHz RF-WiFi Bridge or Gateway Instruction Manual 

Contents

- [1 SONOFF RF Bridge 433MHz RF-WiFi Bridge or Gateway](#)
- [2 Operating Instruction](#)
- [3 Compatible Pairing Mode](#)
- [4 Add sub-devices](#)
- [5 Specifications](#)
- [6 Product Introduction](#)
- [7 LED indicator status instruction](#)
- [8 Features](#)
- [9 Factory Reset](#)
- [10 Common Problems](#)
- [11 Documents / Resources](#)



SONOFF RF Bridge 433MHz RF-WiFi Bridge or Gateway



Product Information

| Model | Input | RF | Wi-Fi | Operating systems | Working temperature | Material | Dimension |
|-----------------------|----------|---------------|--------------------------|-------------------|---------------------|--------------------------------------|------------|
| RF Bridge/RF BridgeR2 | 5V 1A | 433.9 2MHz | IEEE 802.11 b/g/n 2.4GHz | Android & iOS | -10~40 | RF Bridge: ABS V0/RF BridgeR2: PC V0 | 62x62x20mm |

Product Usage Instructions

- Download and install the eWeLink app from the respective app stores for Android and iOS devices.
- Power on the RF Bridge device.
 - The device enters the quick pairing mode (Touch) during the first use. The Wi-Fi LED indicator will change in a cycle of two short flashes and one long flash.
 - If not paired within 3 minutes, the device will exit the quick pairing mode (Touch).
 - To enter the quick pairing mode (Touch), long press the pairing button for about 5 seconds until the Wi-Fi LED indicator changes in a cycle of two short flashes and one long flash, then release.
- Add Bridge:
 - In the eWeLink app, tap the “+” button and select “Quick Pairing”.
 - Follow the prompts on the app to add Wi-Fi devices in pairing mode.
- Compatible Pairing Mode:
 - If you fail to enter Quick Pairing Mode (Touch), try Compatible Pairing Mode to pair.
 - Long press the pairing button for 5 seconds until the Wi-Fi LED indicator changes in a cycle of two short flashes and one long flash, then release.
 - Tap the “+” button and select “Compatible Pairing Mode” on the app.
 - Select Wi-Fi SSID with ITEAD-***** and enter the password 12345678.
 - Go back to the eWeLink app and tap Next. Wait patiently until pairing completes.
- Add sub-devices:
 - In the eWeLink app, tap the “+” button and select the remote controller type.
 - A beep sound indicates that the device enters quick pairing mode.
 - Proceed to operate on the sub-device to pair.
 - A double beep sound indicates that the pairing is successful.
 - Refer to the user manual of the sub-device for pairing method.
 - The device can add up to 16 sub-devices.

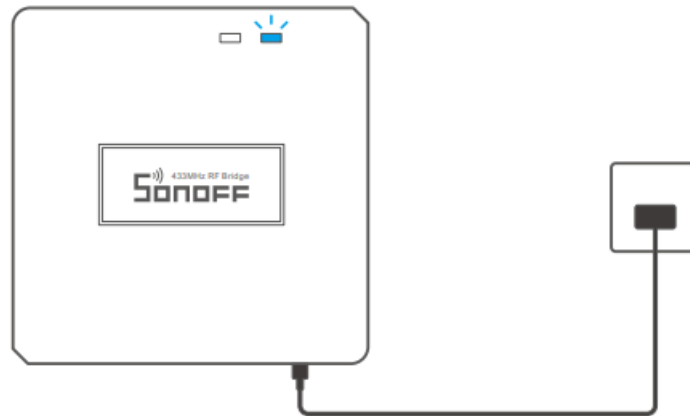
Operating Instruction

- Download “eWeLink”APP



Android™ & iOS

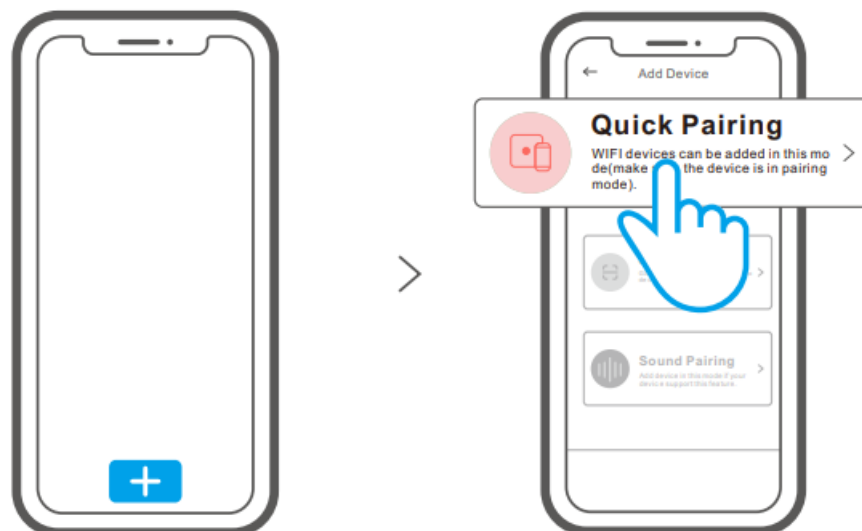
2. Power on



After powering on, the device will enter the quick pairing mode (Touch) during the first use. The Wi-Fi LED indicator changes in a cycle of two short and one long flash.

The device will exit the quick pairing mode (Touch) if not paired within 3mins. If you want to enter this mode, please long press the pairing button for about 5s until the Wi-Fi LED indicator changes in a cycle of two short and one long flash and release.

3. Add Bridge



Tap “+” and select “Quick Pairing”, then operate following the prompt on the APP.

Compatible Pairing Mode

If you fail to enter Quick Pairing Mode (Touch), please try “Compatible Pairing Mode ” to pair.

1. Long press Pairing button for 5s until the Wi-Fi LED indicator changes in a cycle of two short flashes and one long flash and release. Long press Pairing button for 5s again until the Wi-Fi LED indicator flashes quickly. Then, the device enters Compatible Pairing Mode.
2. Tap “+” and select “Compatible Pairing Mode ” on APP.
Select Wi-Fi SSID with ITEAD-***** and enter the password 12345678, and then go back to eWeLink APP and tap “Next”. Be patient until pairing completes.

Add sub-devices



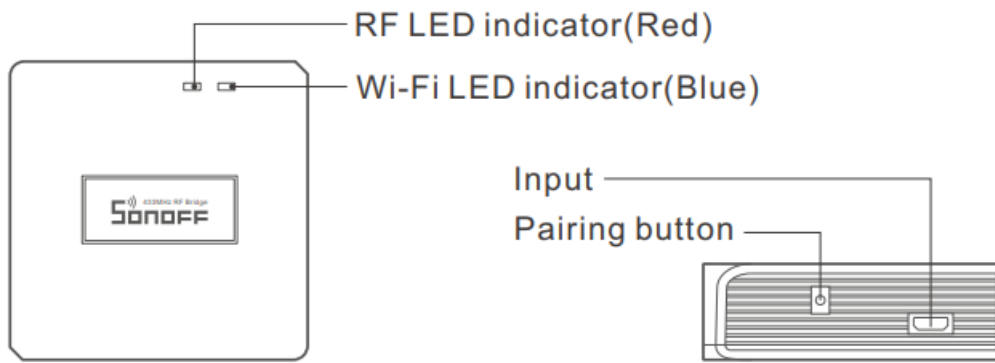
Tap “+” and select the remote controller type, then a “Beep” indicates that the device enters quick pairing mode. Proceed to operate on the sub-device to pair and “Beep Beep” indicates that the pairing is successful.

Please refer to the user manual of the sub-device for pairing method.
The device can add up to 16 sub-devices.

Specifications

| | |
|---------------------|--------------------------------------|
| Model | RF Bridge/RF BridgeR2 |
| Input | 5V 1A |
| RF | 433.92MHz |
| Wi-Fi | IEEE 802.11 b/g/n 2.4GHz |
| Operating systems | Android & iOS |
| Working temperature | -10°C~40°C |
| Material | RF Bridge: ABS V0/RF BridgeR2: PC V0 |
| Dimension | 62x62x20mm |

Product Introduction



The device weight is less than 1 kg.

The installation height of less than 2 m is recommended.

LED indicator status instruction

| LED indicator status | Status instruction |
|---|--|
| Blue LED flashes (one long and two short) | Quick Pairing Mode |
| Blue LED flashes quickly | Compatible Pairing Mode (AP) |
| Blue LED keeps on | Device is connected successfully |
| Blue LED flashes quickly once | Unable to discover the router |
| Blue LED flashes quickly twice | Connect to the router but fail to connect to Wi-Fi |
| Blue LED flashes quickly three times | Upgrading |
| Red LED flashes quickly | Searching and adding ... |

Features

This is a 433MHz RF bridge with multiple features that allows you to connect a variety of 433MHz wireless devices through switching 433MHz to Wi-Fi. You can set schedules, countdowns, alarm notifications and more.



Remote Control



Single/Countdown Timing



Voice Control



Share Control



Sync Status



Alarm notification



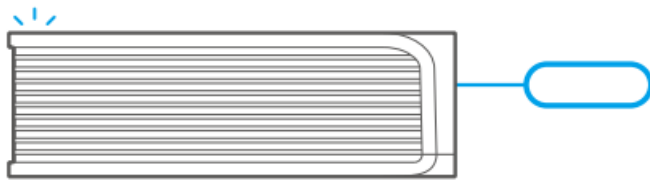
Smart Scene



Camera Feature

Factory Reset

Long press the pairing button for about 5s until the Wi-Fi LED indicator changes in a cycle of two short and one long flash and release, then the reset is successful. The device enters quick pairing mode (Touch).



Please reset the device to factory defaults if you want to change the Wi-Fi network, then reconnect the new network.

Common Problems

• Q: Why my device stays “Offline”?

A: The newly added device needs 1 – 2mins to connect Wi-Fi and network. If it stays offline for a long time, please judge these problems by the blue Wi-Fi indicator status:

1. The blue Wi-Fi indicator quickly flashes once per second, which means that the switch failed to connect your Wi-Fi:
 1. Maybe you have entered a wrong Wi-Fi password.
 2. Maybe there's too much distance between the switch your router or the environment causes interference, consider getting close to the router. If failed, please add it again.
 3. The 5G Wi-Fi network is not supported and only supports the 2.4GHz wireless network.
 4. Maybe the MAC address filtering is open. Please turn it off.
2. Blue indicator quickly flashes twice per second, which means your device has connected to Wi-Fi but failed to connect to the server.

Ensure steady enough network. If double flash occurs frequently, which means you access an unsteady network, not a product problem. If the network is normal, try to turn off the power to restart the switch.

Documents / Resources

| | |
|--|---|
| | <p>SONOFF RF Bridge 433MHz RF-WiFi Bridge or Gateway [pdf] Instruction Manual RF Bridge, RF BridgeR2, RF Bridge 433MHz RF-WiFi Bridge or Gateway, 433MHz RF-WiFi Bridge or Gateway, RF-WiFi Bridge or Gateway, Bridge or Gateway, Gateway</p> |
|--|---|