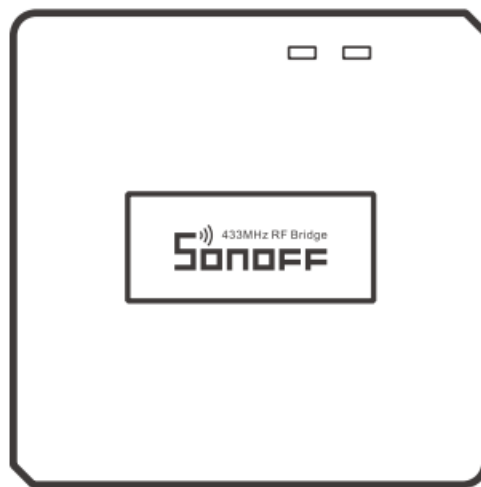


# SONOFF RF Bridge 433 Smart Hub User Manual



RF Bridge

Quick Guide V 2.0

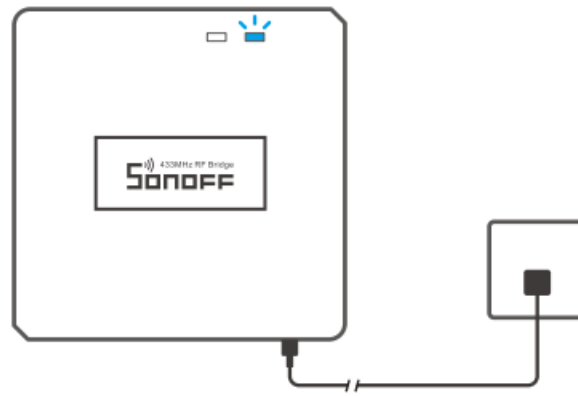


433MHz RF Bridge

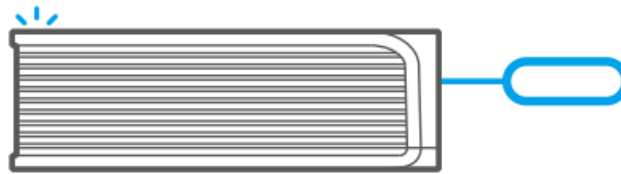
(1) Download the eWeLink App



(2) Power on

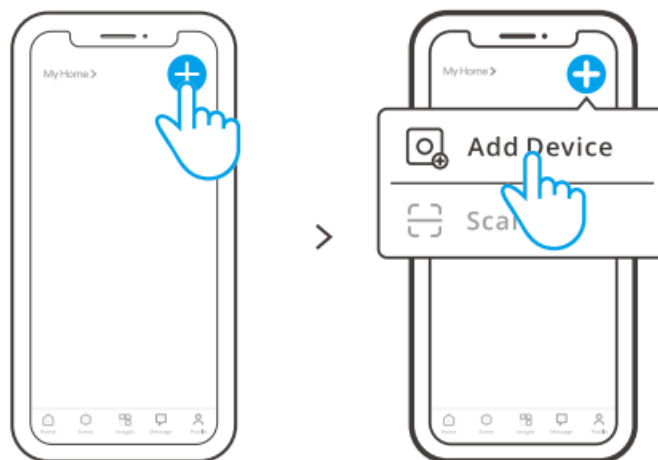


After powering on, the device will enter the Pairing Mode during the first use. The Wi-Fi LED indicator changes in a cycle of two short and one long flash and release.



The device will exit the Pairing Mode if not paired within 3mins. If you want to enter this mode, please long press button for about 5s until the Wi-Fi LED indicator changes in a cycle of two short and one long flash and release.

### (3) Add device



Tap “+” and select “Add Device”, then operate following the prompt on the App.

### (4) Add sub-devices



Tap “+” and select the remote controller type, then a “Beep” indicates that the device enters quick pairing mode. Proceed to operate on the sub-device to pair and “Beep Beep” indicates that the pairing is successful.



Please refer to the user manual of the sub-device for pairing method.

The device can add up to 16 sub-devices.

User Manual



<https://sonoff.tech/usermanuals>

Scan the QR code or visit the website to learn about the detailed user manual and help.

Scatola	Manuale
PAP 21	PAP 22
Carta	Carta
RACCOLTA DIFFERENZIATA	
Verifica le disposizioni del tuo Comune. Separa le componenti e conferiscile in modo corret	

FCC compliance statement

1. This device complies with part 15 of the FCC Rules. Operation is subject to the following two conditions:
  - (1) This device may not cause harmful interference, and
  - (2) This device must accept any interference received, including interference that may cause undesired

operation.

2. Changes or modifications not expressly approved by the party responsible for compliance could void the user's authority to operate the equipment.

Note: This equipment has been tested and found to comply with the limits for a Class B digital device, pursuant to part 15 of the FCC Rules. These limits are designed to provide reasonable protection against harmful interference in a residential installation. This equipment generates, uses and can radiate radio frequency energy and, if not installed and used in accordance with the instructions, may cause harmful interference to radio communications. However, there is no guarantee that interference will not occur in a particular installation. If this equipment does cause harmful interference to radio or television reception, which can be determined by turning the equipment off and on, the user is encouraged to try to correct the interference by one or more of the following measures:

- Reorient or relocate the receiving antenna.
- Increase the separation between the equipment and receiver.
- Connect the equipment into an outlet on a circuit different from that to which the receiver is connected.
- Consult the dealer or an experienced radio/TV technician for help.

#### FCC Radiation Exposure statement:

This equipment complies with FCC radiation exposure limits set forth for an uncontrolled environment.

This equipment should be installed and operated with minimum distance of 20 cm between the radiator and your body.

This transmitter must not be co-located or operating in conjunction with any other antenna or transmitter.

#### WEEE Disposal and Recycling Information



WEEE Disposal and Recycling Information All products bearing this symbol are waste electrical and electronic equipment (WEEE as in directive 2012/19/EU) which should not be mixed with unsorted household waste. Instead, you should protect human health and the environment by handing over your waste equipment to a designated collection point for the recycling of waste electrical and electronic equipment, appointed by the government or local authorities. Correct disposal and recycling will help prevent potential negative consequences to the environment and human health. Please contact the installer or local authorities for more information about the location as well as terms and conditions of such collection points.

#### EU Declaration of Conformity

Hereby, Shenzhen Sonoff Technologies Co., Ltd. declares that the radio equipment type RF Bridge/RF BridgeR2 is in compliance with Directive 2014/53/EU. The full text of the EU declaration of conformity is available at the following internet address:

<https://sonoff.tech/compliance/>

For CE Frequency

#### EU Operating Frequency Range

WiFi: 802.11 b/g/n20 2412-2472 MHz

SRD: 433.92MHz

#### EU Output Power

Wi-Fi: 2.4G≤20dBm

433.92MHz: ≤10dBm

#### Warning

Under normal use of condition, this equipment should be kept a separation distance of at least 20 cm between the antenna and the body of the user.

## Shenzhen Sonoff Technologies Co., Ltd.

1001, BLDG8, Lianhua Industrial Park, shenzhen, GD, China

ZIP code: 518000 Website: [sonoff.tech](http://sonoff.tech)

Service email: [support@itead.cc](mailto:support@itead.cc)

MADE IN CHINA



### WARNING

1. This product is not a toy and not intended for use by children. For adult use only.
2. The appliance is suitable for moderate climates only.
3. The ventilation must not be impaired by covering the appliance with items such as newspapers, table cloths, curtains, etc.
4. Naked flame sources, such as candles, must not be placed on the appliance.

### Contents

- [1 Documents / Resources](#)
- [1.1 References](#)

## Documents / Resources



[SONOFF RF Bridge 433 Smart Hub](#) [pdf] User Manual  
RF Bridge 433 Smart Hub, RF Bridge, 433 Smart Hub, Smart Hub, Hub

## References

- [User Manual](#)

[Manuals+](#). [Privacy Policy](#)

This website is an independent publication and is neither affiliated with nor endorsed by any of the trademark owners. The "Bluetooth®" word mark and logos are registered trademarks owned by Bluetooth SIG, Inc. The "Wi-Fi®" word mark and logos are registered trademarks owned by the Wi-Fi Alliance. Any use of these marks on this website does not imply any affiliation with or endorsement.