

SONOFF[®]
Pro-120 Control
Panel Smart
Home
Automation



SONOFF Pro-120 Control Panel Smart Home Automation User Guide

[Home](#) » [SonOFF](#) » SONOFF Pro-120 Control Panel Smart Home Automation User Guide 

Contents

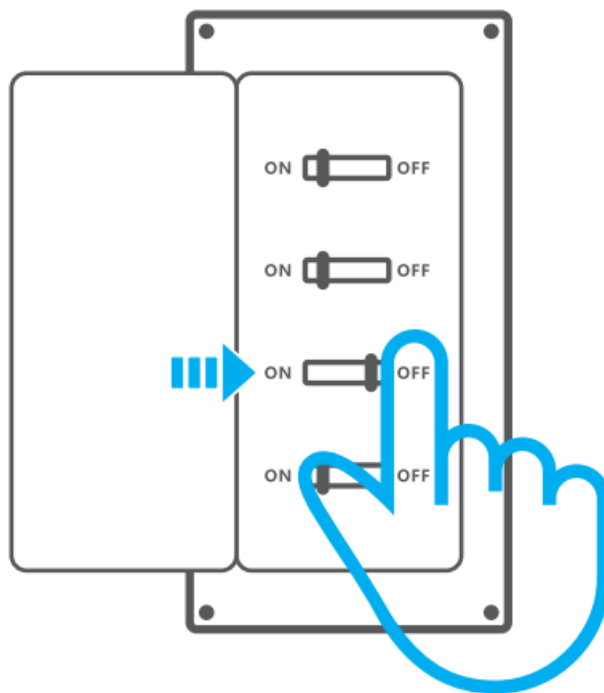
- [1 SONOFF Pro-120 Control Panel Smart Home Automation](#)
- [2 Power off](#)
- [3 Wiring instruction](#)
- [4 Installation](#)
- [5 FCC](#)
- [6 CONTACT INFORMATION](#)
- [7 Documents / Resources](#)
 - [7.1 References](#)
- [8 Related Posts](#)

SONOFF[®]

SONOFF Pro-120 Control Panel Smart Home Automation

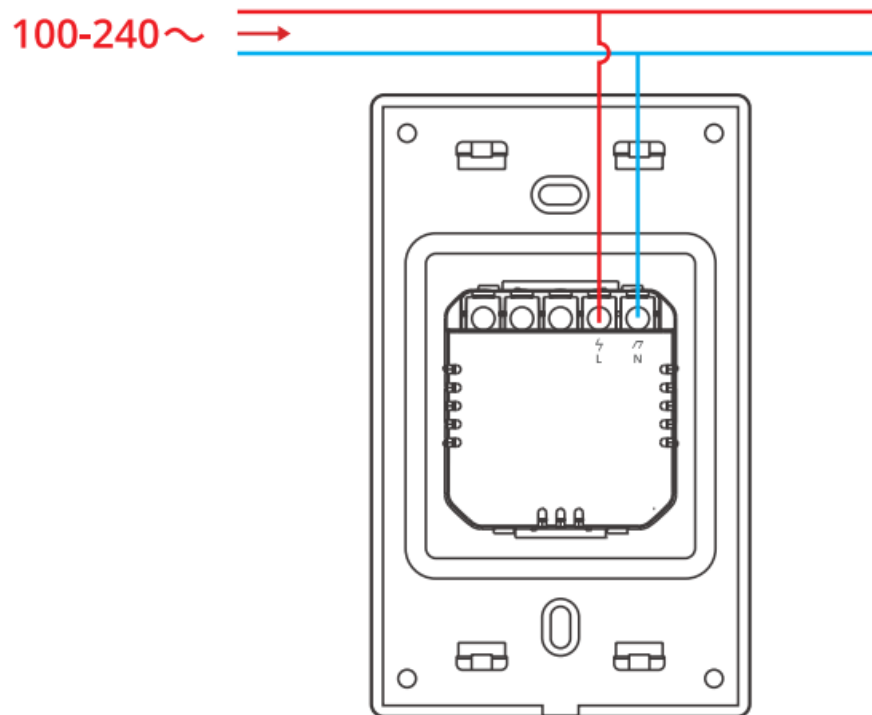


Power off



- Please install and maintain the device by a professional electrician. To avoid electric shock hazards, do not operate any connection or contact the terminal connector while the device is powered on!

Wiring instruction

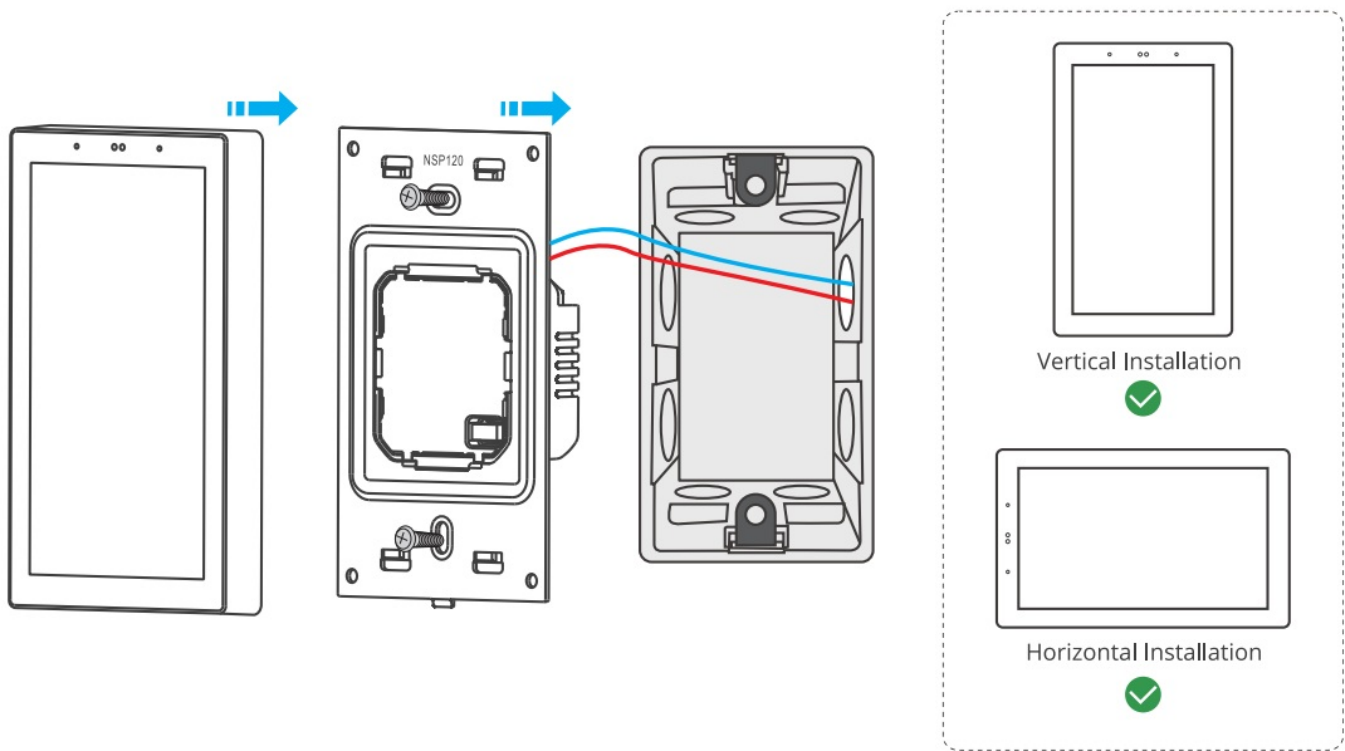


- Make sure all wires are connected correctly.

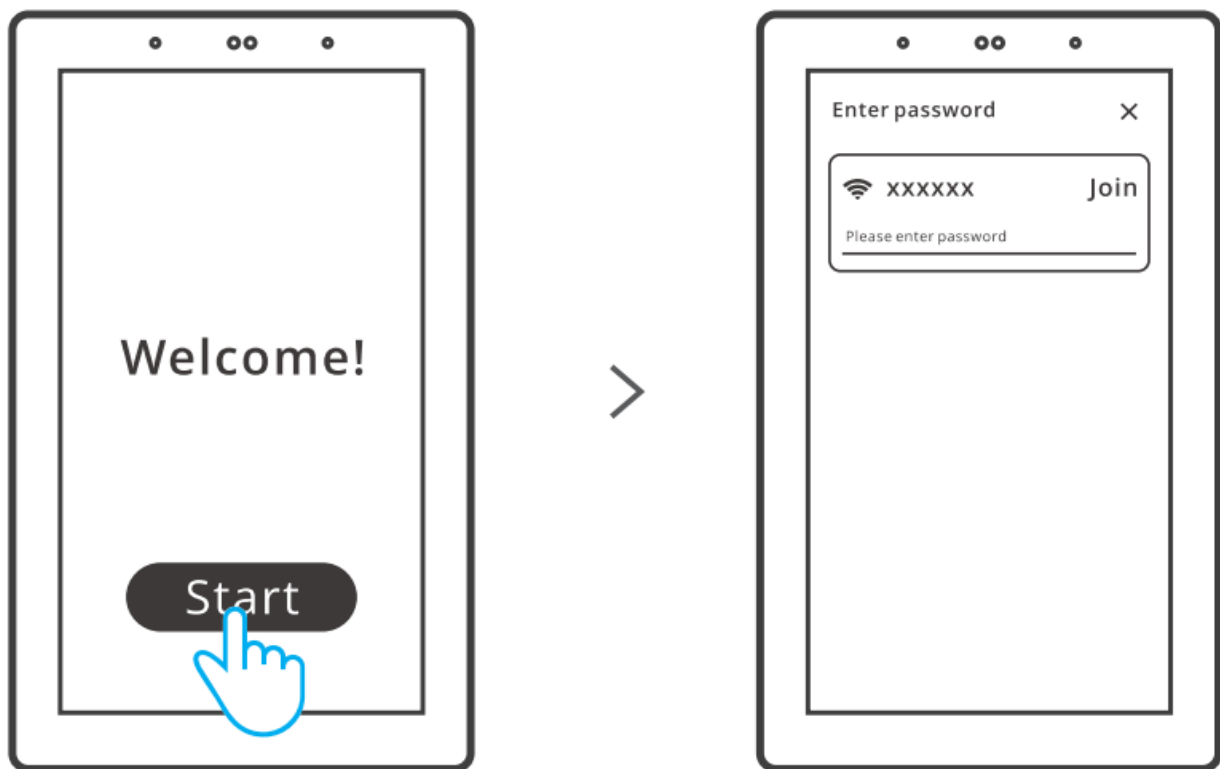
Download the eWeLink App



Installation

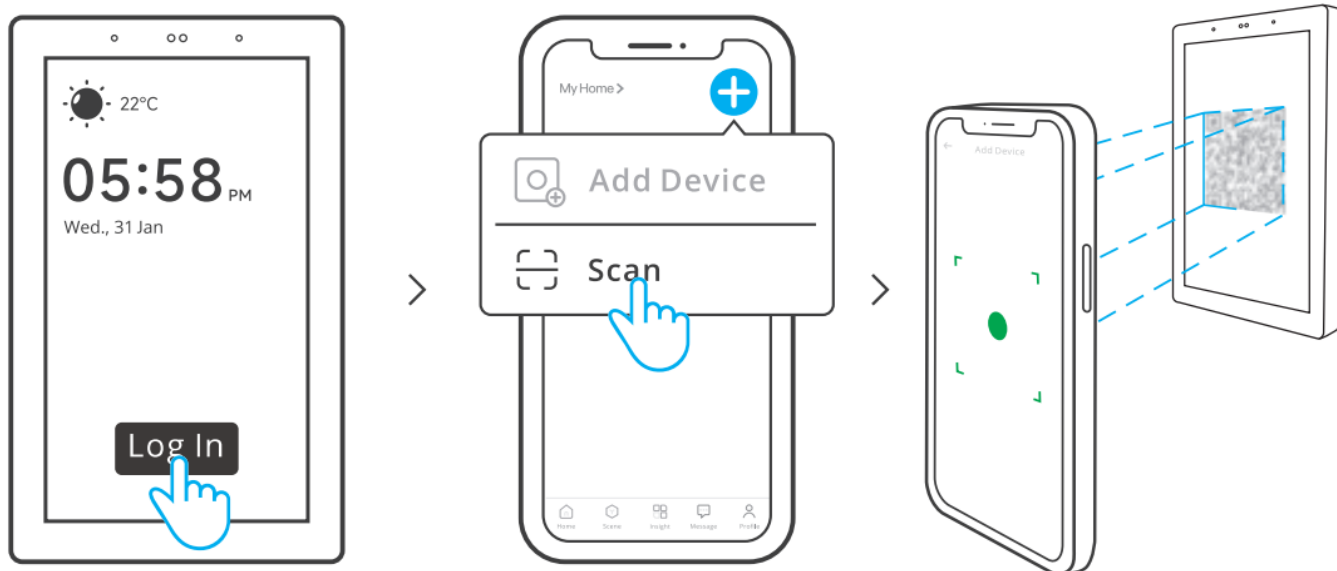


POWER NO



- After powering on, click "Start," choose the language and region, and then select Wi-Fi and input the password to enter the device's main interface.

Log In



- Tap “Log In” on the device and tap “+” on the eWeLink App to select “Scan”, then scan the QR code on the device screen by your App.

User Manual

Scan the QR code or visit the website to learn about the detailed user manual and help.



- <https://sonoff.tech/usermanuals>

FCC

FCC compliance statement

1. This device complies with part 15 of the FCC Rules. Operation is subject to the following two conditions:
 1. This device may not cause harmful interference, and
 2. This device must accept any interference received, including interference that may cause undesired operation.
2. Changes or modifications not expressly approved by the party responsible for compliance could void the user's authority to operate the equipment. Note: This equipment has been tested and found to comply with the limits for a Class B digital device, under part 15 of the FCC Rules. These limits are designed to provide reasonable protection against harmful interference in a residential installation. This equipment generates, uses, and can

radiate radio frequency energy and, if not installed and used by the instructions, may cause harmful interference to radio communications. However, there is no guarantee that interference will not occur in a particular installation. Suppose this equipment does cause harmful interference to radio or television reception, which can be determined by turning the equipment off and on. In that case, the user is encouraged to try to correct the interference by one or more of the following measures:

- Reorient or relocate the receiving antenna.
- Increase the separation between the equipment and the receiver.
- Connect the equipment to an outlet on a circuit different from that to which the receiver is connected.
- Consult the dealer or an experienced radio/TV technician for help.

FCC Radiation Exposure statement:

This equipment complies with FCC radiation exposure limits set forth for an uncontrolled environment. This equipment should be installed and operated with a minimum distance of 20 cm between the radiator and your body. This transmitter must not be co-located or operating in conjunction with any other antenna or transmitter.

ISED Notice

This device contains license-exempt transmitter(s)/receiver(s) that comply with Innovation, Science, and Economic Development Canada's license-exempt RSS(s). Operation is subject to the following two conditions:

1. This device may not cause interference.
2. This device must accept any interference, including interference that may cause undesired operation of the device.

This Class B digital apparatus complies with Canadian ICES – 003(B). This device complies with RSS – 247 of Industry Canada. Operation is subject to the condition that this device does not cause harmful interference.

ISED Radiation Exposure Statement

This equipment complies with ISED radiation exposure limits set forth for an uncontrolled environment. This equipment should be installed and operated with a minimum distance of 20 cm between the radiator and your body. This transmitter must not be co-located or operating in conjunction with any other antenna or transmitter.

SAR Warning

Under normal use conditions, this equipment should keep a separation distance of at least 20 cm between the antenna and the body of the user.

EU Declaration of Conformity

Hereby, Shenzhen Sonoff technologies Co., Ltd declares that the radio equipment type NSPanel120PW/NSPanel120PB complies with Directive 2014/53/EU. The full text of the EU declaration of Conformity is available at the following internet address: <https://sonoff.tech/compliance/>

For CE frequency

EU Operating Frequency Range

Wi-Fi:

- 802.11 b/g/n20 2412-2472 MHz
- 802.11 n40: 2422-2462 MHz
- BT: 2402-2480 MHz
- Zigbee : 2405-2480 MHz

EU Output Power

- Wi-Fi 2.4G≤20dBm
- BT≤10dBm
- Zigbee≤10dBm

Scatola	Scatola	Manuale	Neto	Borsa	Borsa
PAP 20	PAP 21	PAP 22	EVA 7	CPE 7	LDPE 4
Carta	Carta	Carta	Plastica	Plastica	Plastica
RACCOLTA DIFFERENZIATA					
Verifica le disposizioni del tuo Comune. Separa le componenti e conferiscile in modo corretto.					

This product is only suitable for safe use at altitudes below 2000m.

Warning:

A suitable circuit breaker in accordance with Annex L of standard TEC/UL/CSA/EN 62368-1 shall be incorporated in the electrical installation of the building. A suitable circuit breaker shall be provided as part of the building installation.

The product should be installed in concrete wall or other non-combustible locations.

WEEE Disposal and Recycling Information



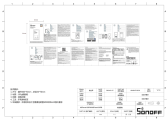
■ All products bearing this symbol are waste electrical and electronic equipment (WEEE as in directive 2012/19/EU) which should not be mixed with unsorted household waste. Instead, you should protect human health and the environment by handing over your waste equipment to a designated collection point for the recycling of waste electrical and electronic equipment, appointed by the government or local authorities. Correct disposal and recycling will help prevent potential negative consequences to the environment and human health. Please contact the installer or local authorities for more information about the location as well as the terms and conditions of such collection points.

CONTACT INFORMATION

- Shenzhen Sonoff Technologies Co., Ltd.
- 3F & 6F, Bldg A, No. 663, Bulong Rd, Shenzhen, Guangdong, China
- ZIP code: 518000
- Website: sonoff.tech
- Service email: support@itead.cc

- MADE IN CHINA

Documents / Resources



[SONOFF Pro-120 Control Panel Smart Home Automation](#) [pdf] User Guide
Pro-120 Control Panel Smart Home Automation, Pro-120, Control Panel Smart Home Automati
on, Smart Home Automation, Home Automation, Automation

References

- [User Manual](#)

Manuals+ Privacy Policy

This website is an independent publication and is neither affiliated with nor endorsed by any of the trademark owners. The "Bluetooth®" word mark and logos are registered trademarks owned by Bluetooth SIG, Inc. The "Wi-Fi®" word mark and logos are registered trademarks owned by the Wi-Fi Alliance. Any use of these marks on this website does not imply any affiliation with or endorsement.