

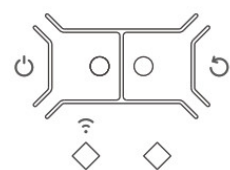


SONOFF POWR3 Wi-Fi Smart Switch with Energy Monitoring User Manual

[Home](#) » [SonOFF](#) » SONOFF POWR3 Wi-Fi Smart Switch with Energy Monitoring User Manual 



User manual V1.0



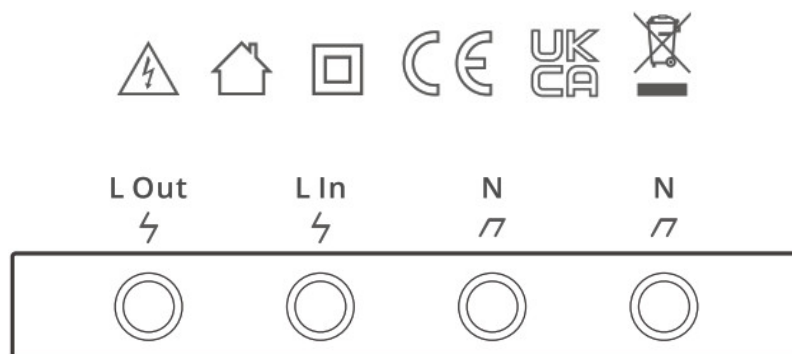
Wi-Fi Smart Switch with Energy Monitoring

Model: POWR3	Wi-Fi: IEEE 802.11 b/g/n 2.4GHz
Input: 100-240V ~ 50/60Hz 25A Max	FCC ID: 2APNSPOWR3
Output: 100-240V ~ 50/60Hz 25A Max	Max. load: 5500W

Manufacturer: Shenzhen Sonoff Technologies Co., Ltd.
1001, BLDG8, Lianhua Industrial Park, shenzhen, GD, China

 <https://sonoff.tech>

 MADE IN CHINA



Wi-Fi Smart Switch with Energy Monitoring

Contents

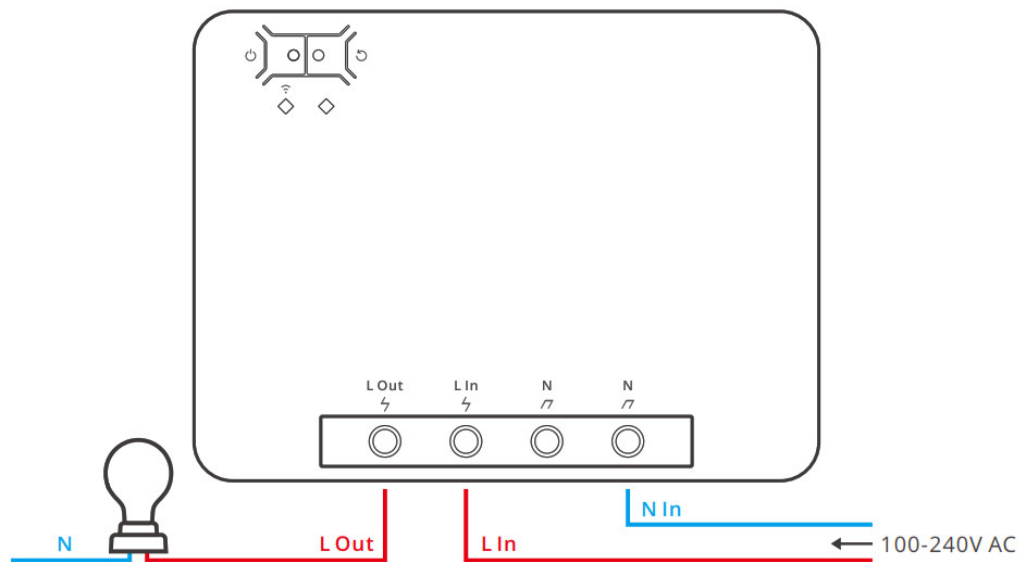
- [1 Operating Instruction](#)
- [2 Compatible Pairing Mode](#)
- [3 Specifications](#)
- [4 Product Introduction](#)
- [5 Wi-Fi LED indicator status instruction](#)
- [6 Features](#)
- [7 Switch Network](#)
- [8 Factory Reset](#)
- [9 Common Problems](#)
- [10 FCC Warning](#)
- [11 CE Warning](#)
- [12 Documents / Resources](#)
- [13 Related Posts](#)

Operating Instruction

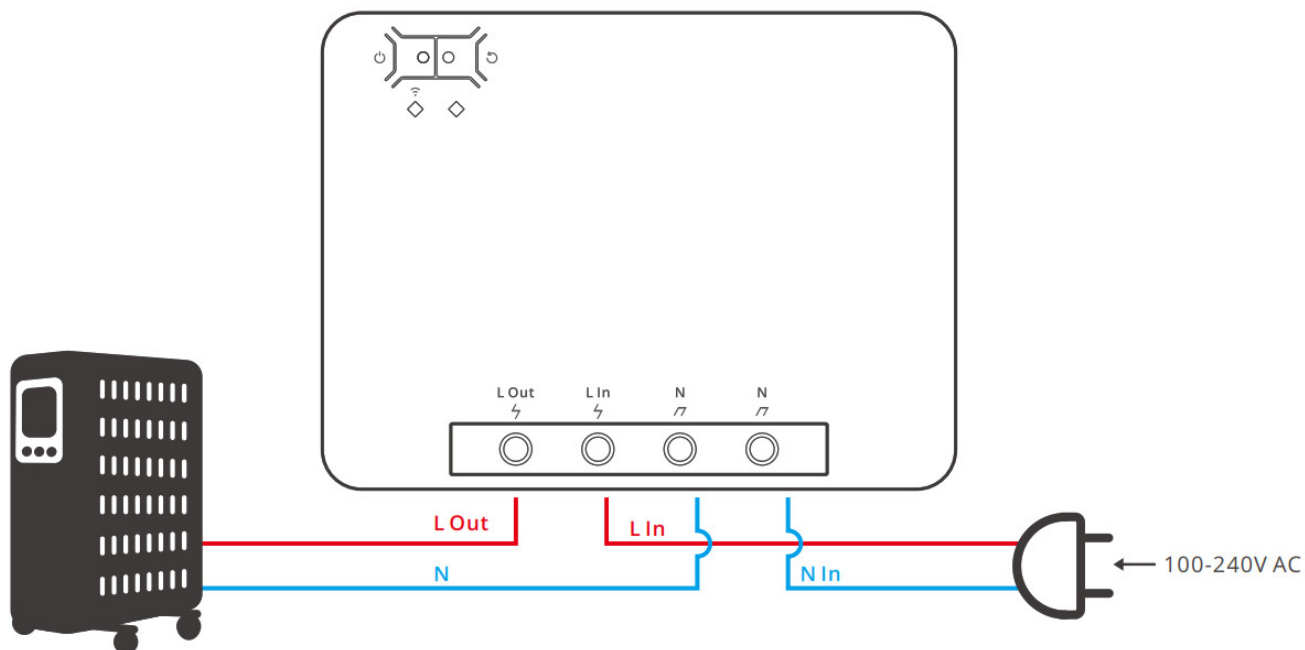
1. Power off



Light fixture wiring instruction:



Appliance wiring instruction:



⚠ Make sure the neutral wire and live wire connection is correct.

3. Download APP

Search | eWeLink

Download on the App Store

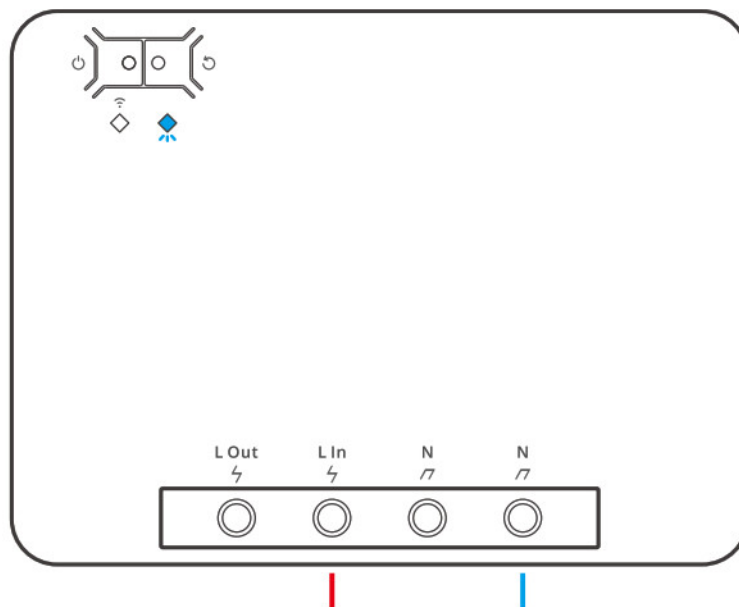
GET IT ON Google Play



Android™ & iOS

<http://app.coolkit.cc/dl.html>

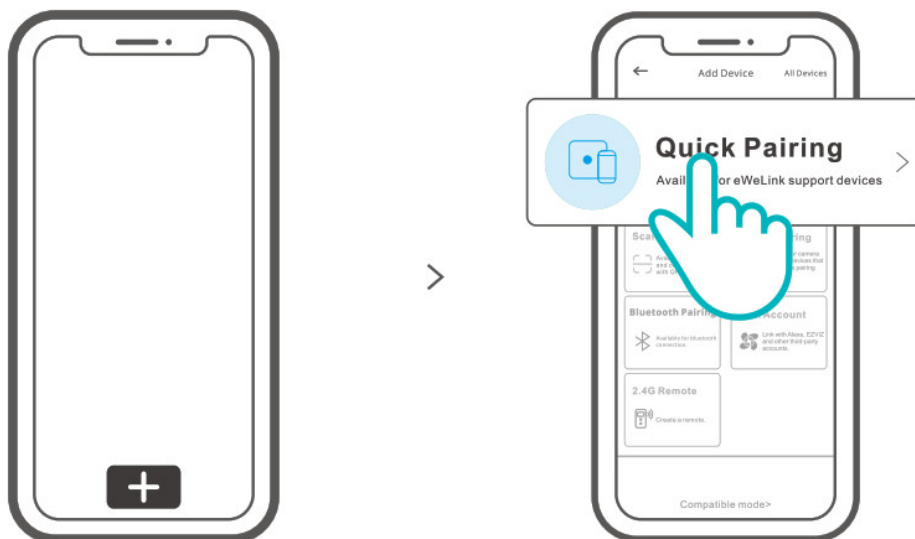
4. Power on



After powering on, the device will enter the quick pairing mode (Touch) during the first use. The Wi-Fi LED indicator changes in a cycle of two short and one long flash and release.

⚠ The device will exit the quick pairing mode (Touch) if not paired within 3mins. If you want to enter this mode, please long press the manual button for about 5s until the Wi-Fi LED indicator changes in a cycle of two short and one long flash and release.

5. Add the device



Tap “+” and select “Quick Pairing”, then operate following the prompt on the APP.

Compatible Pairing Mode

If you fail to enter Quick Pairing Mode (Touch), please try “Compatible Pairing Mode ” to pair.

1. Long press Pairing button for 5s until the Wi-Fi LED indicator changes in a cycle of two short flashes and one long flash and release. Long press Pairing button for 5s again until the Wi-Fi LED indicator flashes quickly. Then, the device enters Compatible Pairing Mode.
2. Tap “+” and select “ Compatible Pairing Mode ” on APP.

For Android system:

Enter Wi-Fi password and tap “Next”. Be patient until pairing completes.

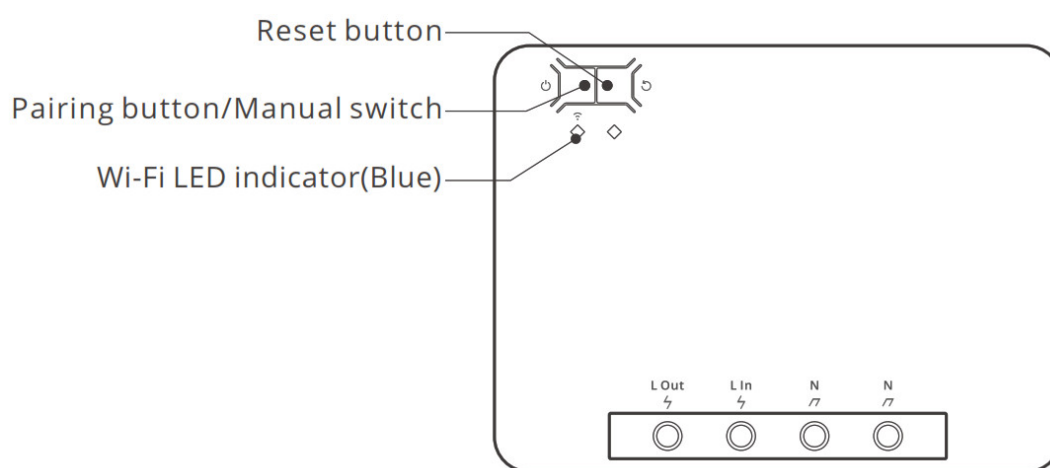
For iOS system:

Enter Wi-Fi password, tap “Next” and then “Connect”. Select Wi-Fi SSID with ITEAD-***** and enter the password 12345678, and then go back to eWeLink app and tap “Next”. Be patient until pairing completes.

Specifications

Model	POWR3
Input	100-240V ~ 50/60Hz 25A Max
Output	100-240V ~ 50/60Hz 25A Max
Max.load	5500W
Wi-Fi	IEEE 802.11 b/g/n 2.4GHz
Operating systems	Android & iOS
Working temperature	-10°C~40°C
Material	PC V0
Dimension	162x122x45.5mm

Product Introduction



Wi-Fi LED indicator status instruction

Wi-Fi LED indicator status	Status instruction
Flashes (one long and two short)	Quick Pairing Mode
Keeps on	Device is connected successfully
Flashes quickly	Compatible Pairing Mode
Flashes quickly once	Unable to discover the router
Flashes quickly twice	Connect to the router but fail to connect to Wi-Fi
Flashes quickly three times	Upgrading

Features

This device is a Wi-Fi smart switch with power monitoring that allows you to remotely turn on/off the device, schedule it on/off or share it with your family to control together.



Remote Control



Single/Countdown
Timing



Voice Control



Share Control



Power Monitoring



Over-load Protection



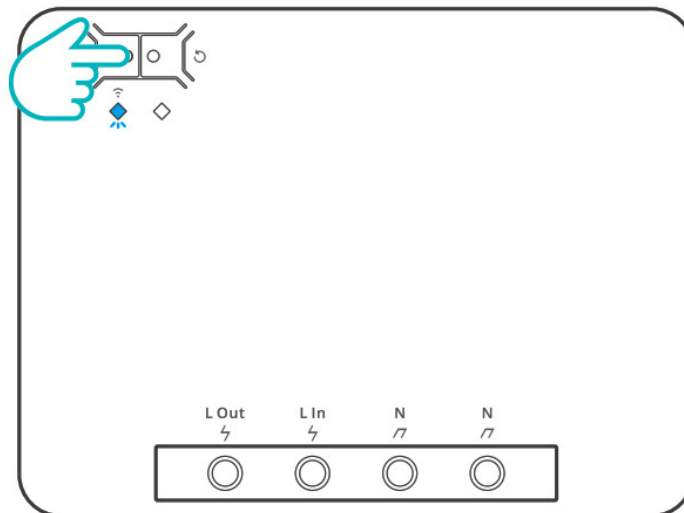
Smart Scene



History Operation Record

Switch Network

If you need to change the network, long press the pairing button for 5s until the Wi-Fi LED indicator changes in a cycle of two short and one long flash and release, then the device enters quick pairing mode and you can pair again.



Factory Reset

Deleting the device on the eWeLink app indicates you restore it to factory setting.

Common Problems

Q: Why my device stays “Offline”?

A: The newly added device needs 1 – 2mins to connect Wi-Fi and network. If it stays offline for a long time, please judge these problems by the blue Wi-Fi indicator status:

1. The blue Wi-Fi indicator quickly flashes once per second, which means that the switch failed to connect your Wi-Fi:
 - ① Maybe you have entered a wrong Wi-Fi password.
 - ② Maybe there's too much distance between the switch your router or the environment causes interference, consider getting close to the router. If failed, please add it again.
 - ③ The 5G Wi-Fi network is not supported and only supports the 2.4GHz wireless network.
 - ④ Maybe the MAC address filtering is open. Please turn it off.

If none of the above methods solved the problem, you can open the mobile data network on your

phone to create a Wi-Fi hotspot, then add the device again.

2. Blue indicator quickly flashes twice per second, which means your device has connected to Wi-Fi but failed to connect to the server. Ensure steady enough network. If double flash occurs frequently, which means you access an unsteady network, not a product problem. If the network is normal, try to turn off the power to restart the switch.

FCC Warning

Changes or modifications not expressly approved by the party responsible for compliance could void the user's authority to operate the equipment.

This device complies with part 15 of the FCC Rules. Operation is subject to the following two conditions:

1. This device may not cause harmful interference, and
2. this device must accept any interference received, including interference that may cause undesired operation.

FCC Radiation Exposure Statement:

This equipment complies with FCC radiation exposure limits set forth for an uncontrolled environment. This equipment should be installed and operated with minimum distance 20cm between the radiator & your body. This transmitter must not be co-located or operating in conjunction with any other antenna or transmitter.

Note:

This equipment has been tested and found to comply with the limits for a Class B digital device, pursuant to part 15 of the FCC Rules. These limits are designed to provide reasonable protection against harmful interference in a residential installation. This equipment generates, uses and can radiate radio frequency energy and, if not installed and used in accordance with the instructions, may cause harmful interference to radio communications. However, there is no guarantee that interference will not occur in a particular installation. If this equipment does cause harmful interference to radio or television reception, which can be determined by turning the equipment off and on, the user is encouraged to try to correct the interference by one or more of the following measures:

- Reorient or relocate the receiving antenna.
- Increase the separation between the equipment and receiver.
- Connect the equipment into an outlet on a circuit different from that to which the receiver is connected.
- Consult the dealer or an experienced radio/TV technician for help.

CE Warning

1. Extreme Operating Temperature : -10 ~+40°C
2. This product can be used across EU member states.
3. This device was tested for typical body-worn operations. To comply with RF exposure requirements, a minimum separation distance of 20cm, It must be maintained between the user's body and the handset, including the antenna.

4.2.4GWIFI:2412~ 2472MHz,Maximum power: 16.37dBm

2014/53/EU.

CAUTION: RISK OF EXPLOSION IF BATTERY IS REPLACED BY AN INCORRECT TYPE. DISPOSE OF USED

Declaration of Conformity Hereby, Shenzhen Sonoff Technologies Co., Ltd. declares that this Wi-Fi Smart Switch with Energy Monitoring is in compliance with the essential requirements and other relevant provisions of directive 2014/53/EU.

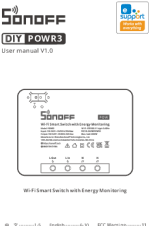
<https://sonoff.tech/usermanuals>



Shenzhen Sonoff Technologies Co., Ltd.
1001, BLDG8, Lianhua Industrial Park, shenzhen, GD, China
ZIP code: 518000
Website: sonoff.tech
MADEIN CHINA



Documents / Resources

	<p>SONOFF POWR3 Wi-Fi Smart Switch with Energy Monitoring [pdf] User Manual POWR3, 2APN5POWR3, POWR3 Wi-Fi Smart Switch with Energy Monitoring, Wi-Fi Smart Switch with Energy Monitoring</p>
--	---