



Sonoff POWR3 High Power Smart User Manual

[Home](#) » [SonOFF](#) » Sonoff POWR3 High Power Smart User Manual 



DIY POWR3 Quick Installation Guide V1.0



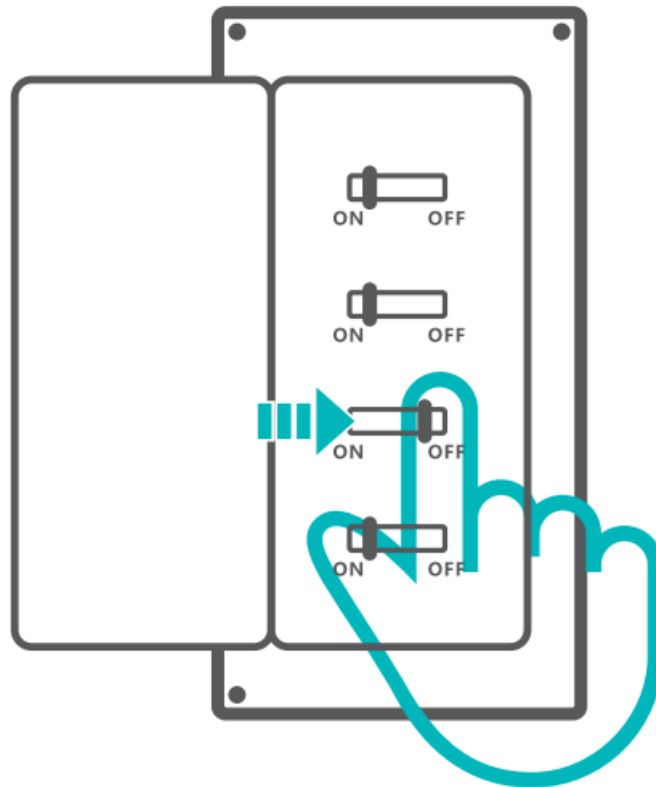
Wi-Fi Smart Switch with Energy Monitoring

Contents

- [1 POWR3 High Power Smart](#)
- [2 FCC Warning](#)
- [3 Documents / Resources](#)
- [4 Related Posts](#)

POWR3 High Power Smart

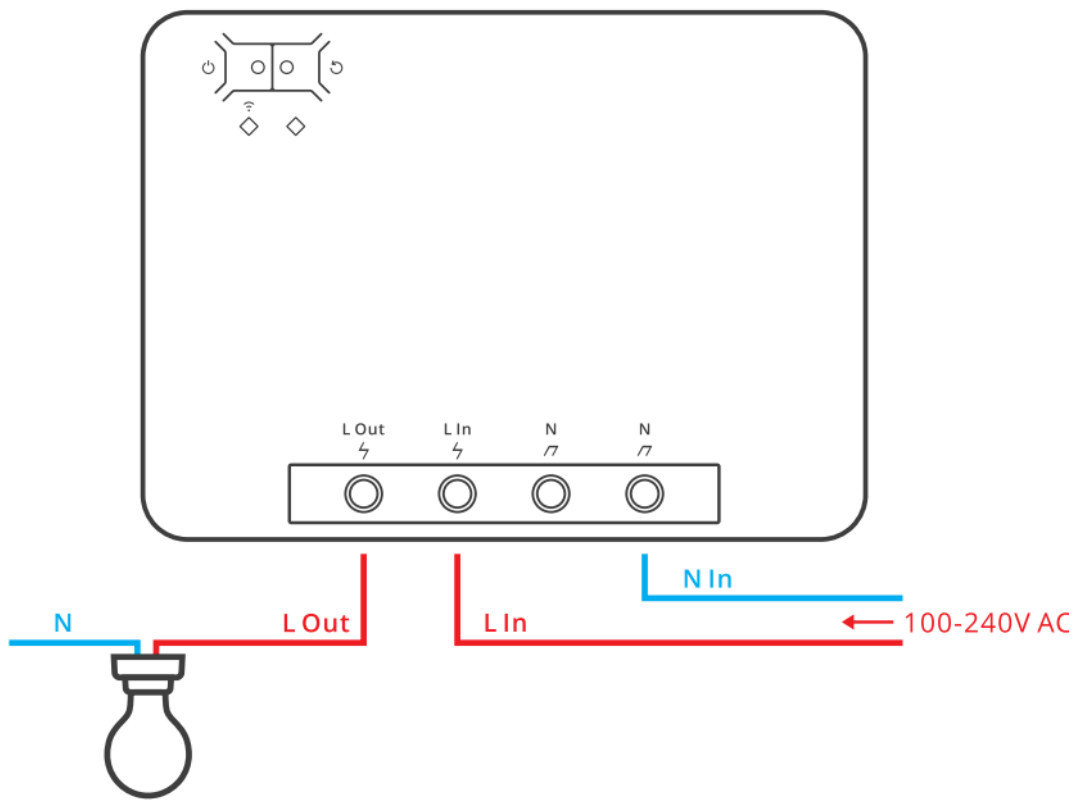
1. Power off



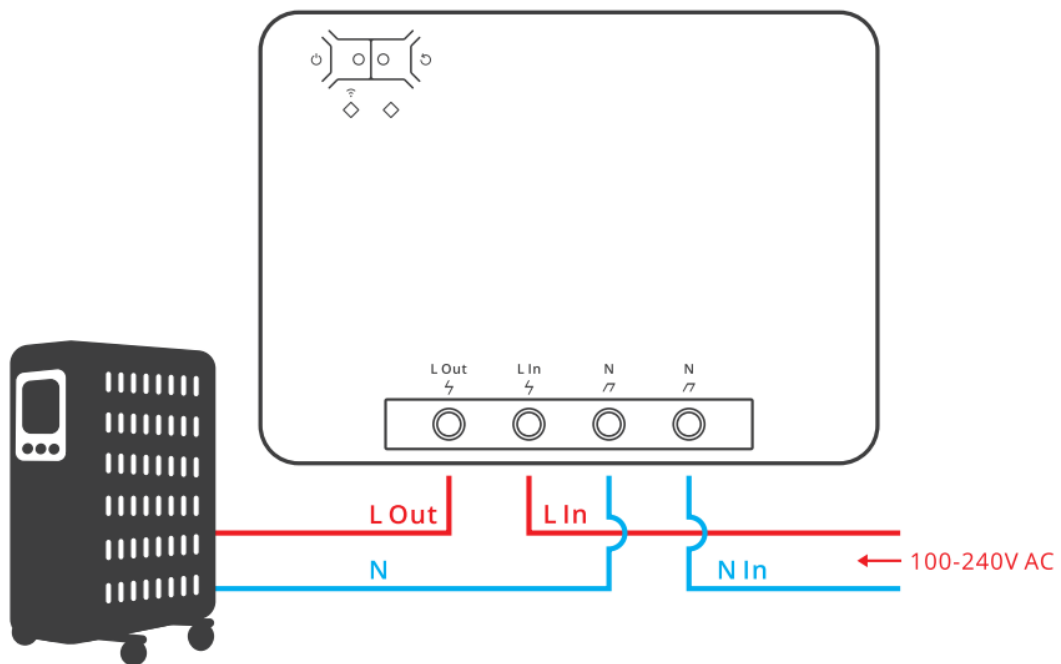
To avoid electric shocks, please consult the dealer or a qualified professional for help when installing and repairing.

2. Wiring instruction

Light fixture wiring instruction



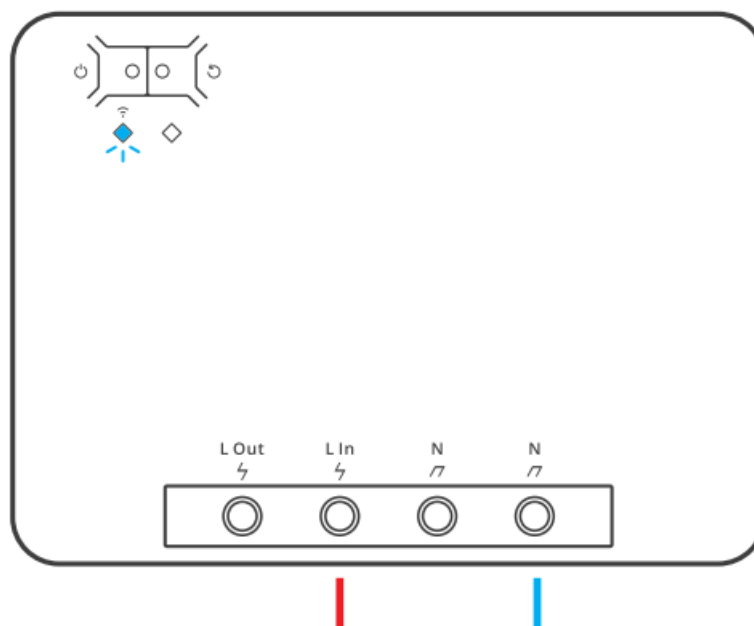
Appliance wiring instruction



Make sure all wires are connected correctly.
3. Download the eWeLink app

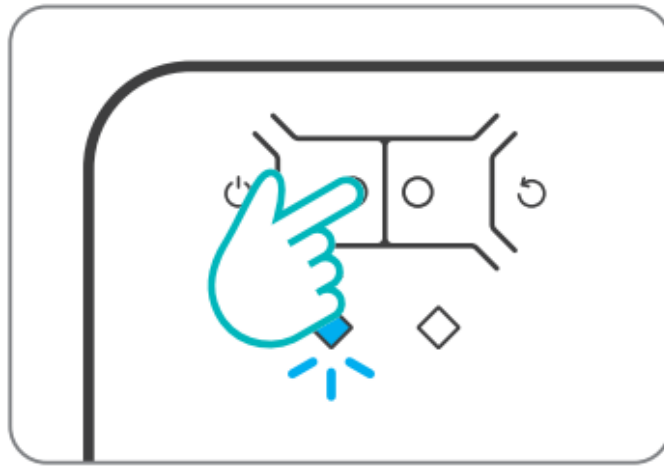


4. Power on



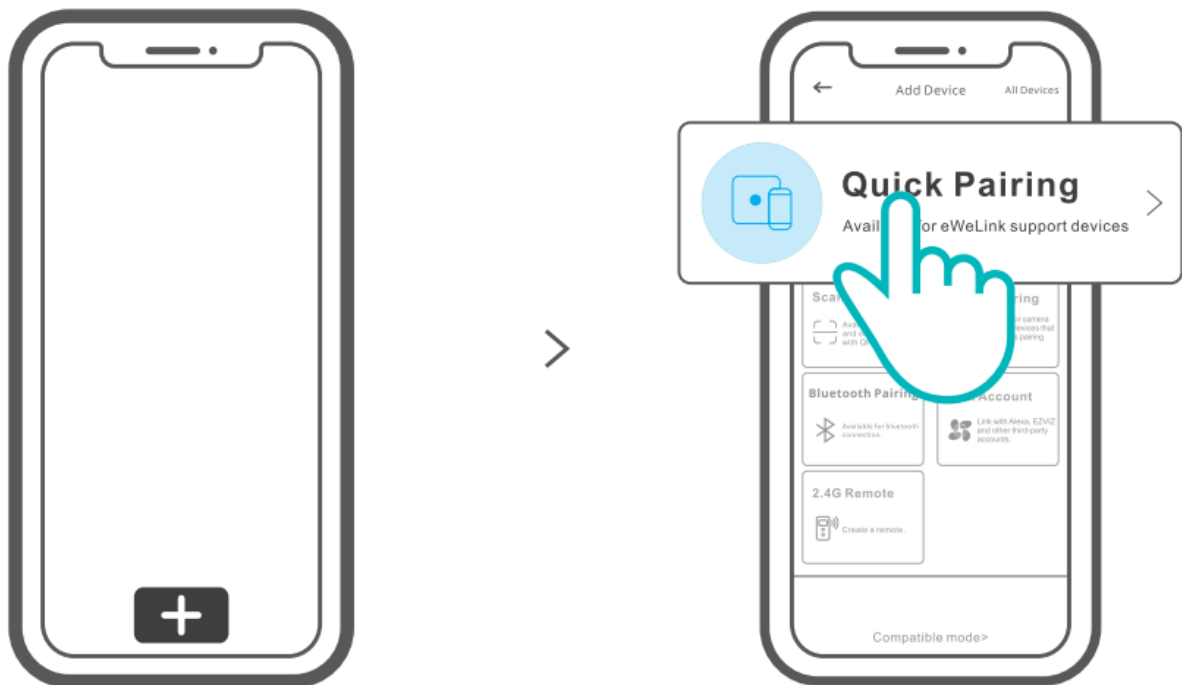
After powering on, the device will enter the quick pairing mode (Touch) during the first use. The Wi-Fi LED indicator changes in a cycle of two short and one long flash and release.





The device will exit the quick pairing mode (Touch) if not paired within 3mins. If you want to enter this mode, please long press the pairing button for about 5s until the Wi-Fi LED indicator changes in a cycle of two short and one long flash and release.

5. Add the device



Tap “+” and select “Quick Pairing”, then operate following the prompt on the app.

User Manual



Scan the QR code or visit the website to learn about the detailed user manual and help.
Scan the QR code to read the voice control instruction for Amazon Echo and Google Home.

FCC Warning

Changes or modifications not expressly approved by the party responsible for compliance could avoid the user's authority to operate the equipment.

This device complies with part 15 of the FCC Rules. Operation is subject to the following two conditions:

1. This device may not cause harmful interference, and
2. this device must accept any interference received, including interference that may cause undesired operation.

FCC Radiation Exposure Statement:

This equipment complies with FCC radiation exposure limits set forth for an uncontrolled environment. This equipment should be installed and operated with minimum distance 20cm between the radiator & your body. This transmitter must not be collocated or operating in conjunction with any other antenna or transmitter.

Note:

This equipment has been tested and found to comply with the limits for a Class B digital device, pursuant to part 15 of the FCC Rules. These limits are designed to provide reasonable protection against harmful interference in a residential installation. This equipment generates, uses and can radiate radio frequency energy and, if not installed and used in accordance with the instructions, may cause harmful interference to radio communications. However, there is no guarantee that interference will not occur in a particular installation. If this equipment does cause harmful interference to radio or television reception, which can be determined by turning the equipment off and on, the user is encouraged to try to correct the interference by one or more of the following measures:

- Reorient or relocate the receiving antenna.
- Increase the separation between the equipment and receiver.
- Connect the equipment into an outlet on a circuit different from that to which the receiver is connected.
- Consult the dealer or an experienced radio/TV technician for help.

Hereby, Shenzhen Sonoff Technologies Co., Ltd. declares that the radio equipment type POWR3 is in compliance with Directive 2014/53/EU. The full text of the EU declaration of conformity is available at the following internet address: <https://sonoff.tech/usermanuals>

LIKE IT!

Glad to know you are satisfied with SONOFF products. It would mean a lot to us if you can take a minute to share your buying experience.



Share it on Amazon



Share it on your social media



Share it with your friends and family

Get the latest news by following us: New arrival Promotion How-to videos

HAVE A PROBLEM?

We are so sorry for the inconvenience caused by the product.
Please contact us for help via the email address below.



support@itead.cc

We will get back to you as soon as possible.



YouTube

https://www.youtube.com/channel/UC1EsS_wR0_isqSbbN-ZM8GA



facebook

<https://www.facebook.com/SONOFF.official/>

Shenzhen Sonoff Technologies Co., Ltd.

1001, BLDGB, Lianhua Industrial Park, Shenzhen, GD, China

ZIP code: 518000

Website: sonoff.tech

MADE IN CHINA



Documents / Resources



[Sonoff POWR3 High Power Smart](#) [pdf] User Manual

POWR3 High Power Smart Switch, POWR3, High Power Smart Switch, Power Smart Switch, Smart Switch, Switch

