



## Sonoff POWCT Smart Power Meter User Guide

[Home](#) » [SonOFF](#) » Sonoff POWCT Smart Power Meter User Guide 



**POW Ring  
Quick Guide V1.1**



**Smart Power Meter**

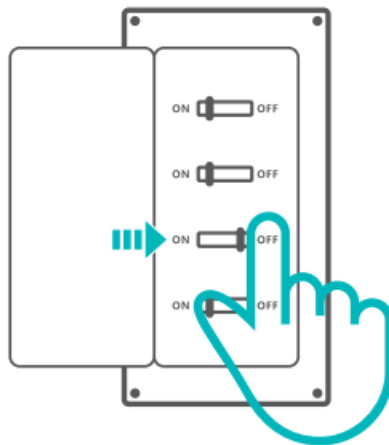
## Contents

- 1 [Download the eWeLink App](#)
- 2 [Power off](#)
- 3 [Install the current transformer and antenna](#)
- 4 [Wiring instruction](#)
- 5 [Installation](#)
- 6 [Power on](#)
- 7 [Scan QR Code to Add Device](#)
- 8 [Test the current direction](#)
- 9 [FCC compliance statement](#)
- 10 [Documents / Resources](#)
  - 10.1 [References](#)

## Download the eWeLink App

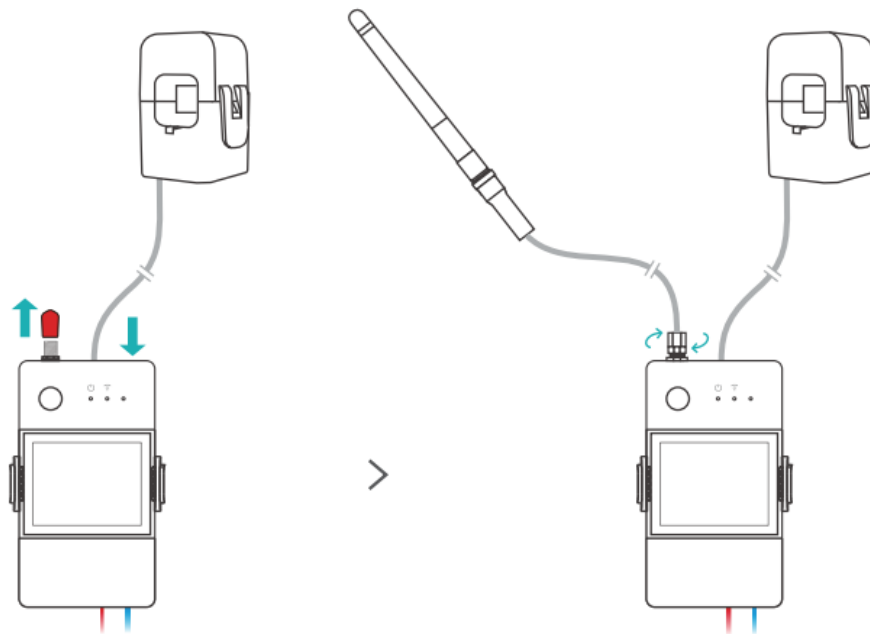


## Power off



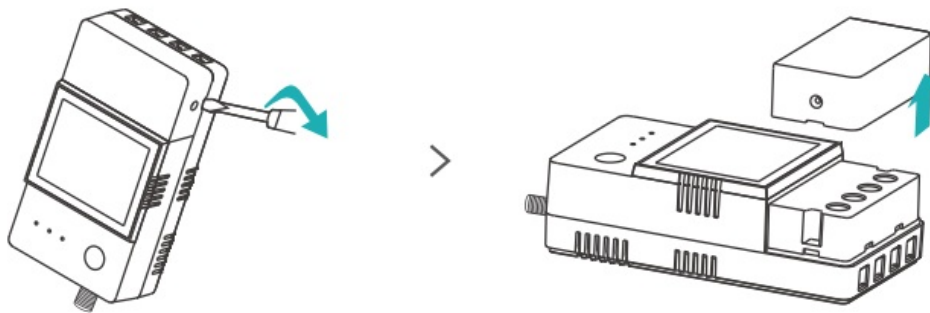
Please install and maintain the device by a professional electrician. To avoid electric shock hazard, do not operate any connection or contact the terminal connector while the device is powered on!

## Install the current transformer and antenna

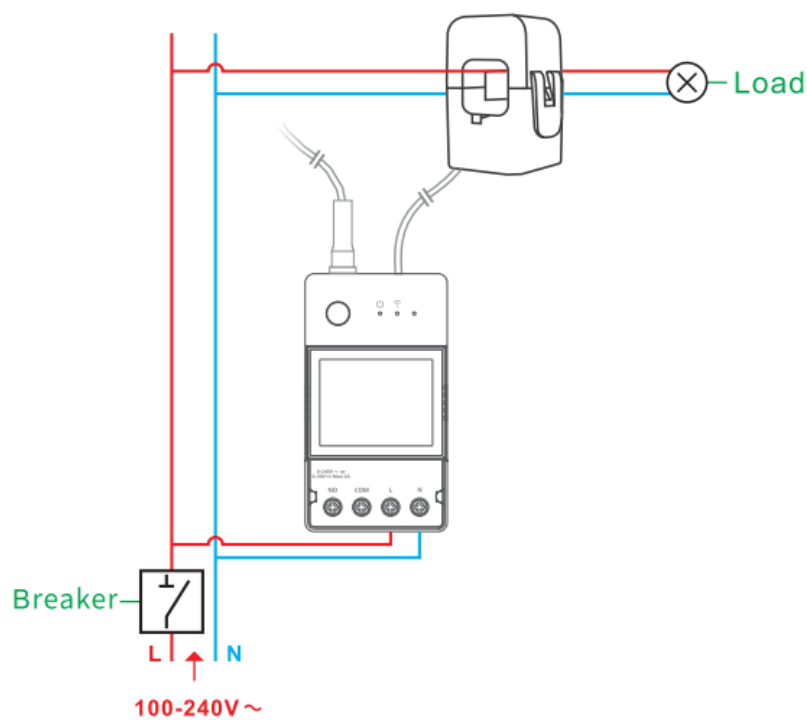


## Wiring instruction

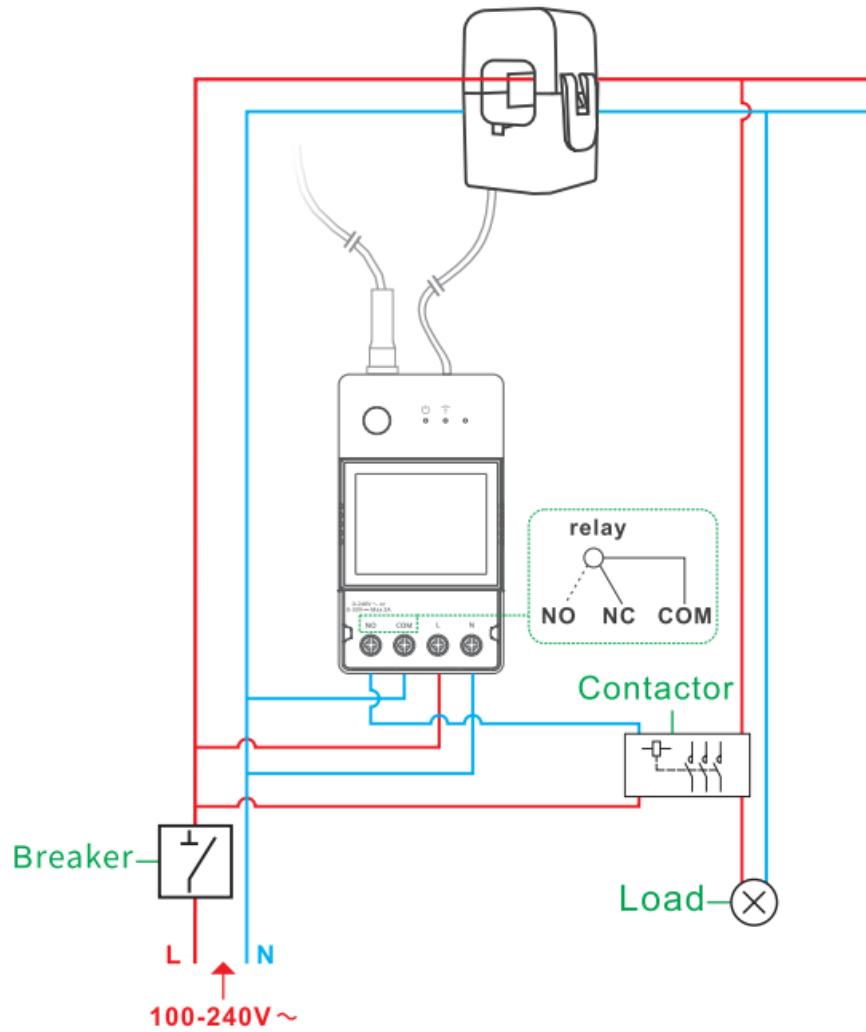
4-1



4-2 Paired with a current transformer to monitor the power consumption of household appliances.

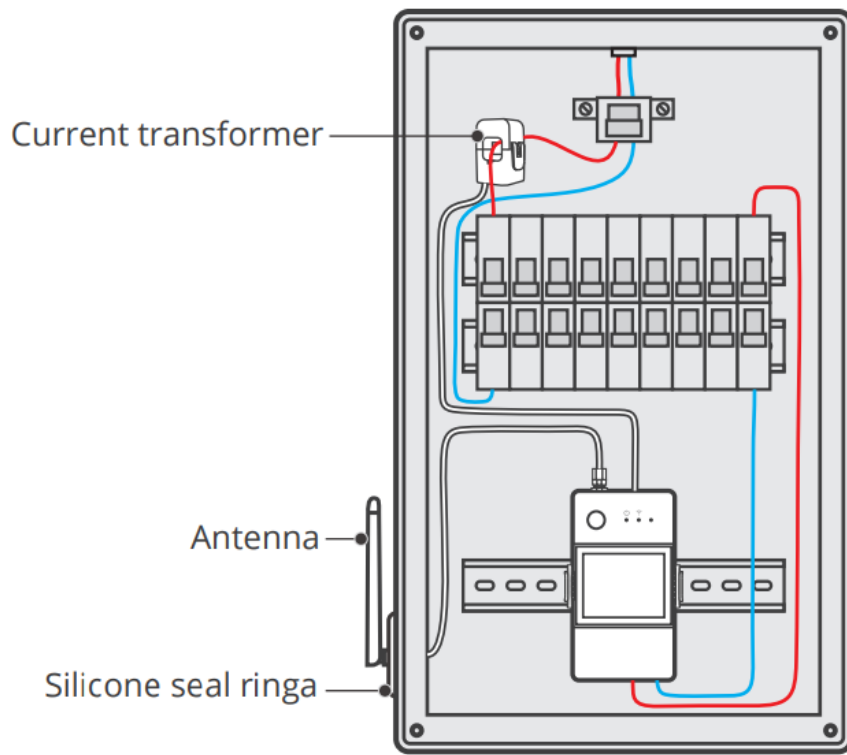


4-3 Paired with a current transformer and a contactor to monitor the power consumption of household appliances and can also control the power switch.



ⓘ Make sure all wires are connected correctly.

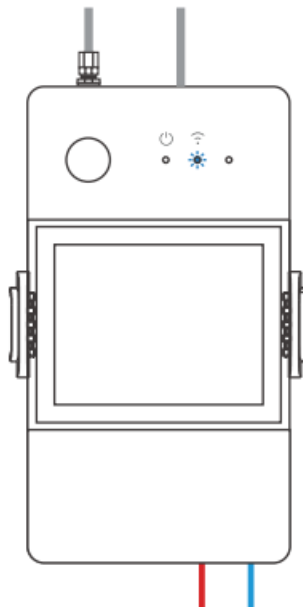
## Installation



Mount the device on the guide rail inside the distribution box, If the distribution box is made of metal, it is recommended to place the antenna externally as shown in the diagram.

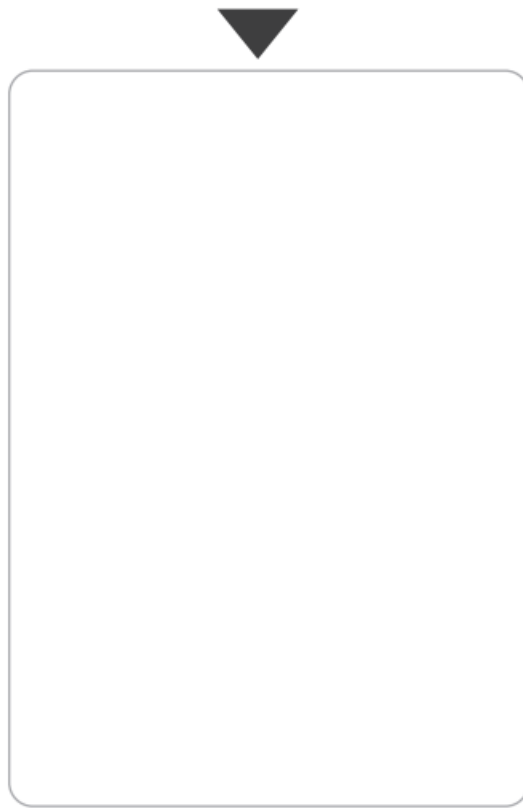
⚠ The wiring layout of the antenna and current transformer should avoid crossing high-voltage busbars and approaching sharp edges and corners.

## Power on



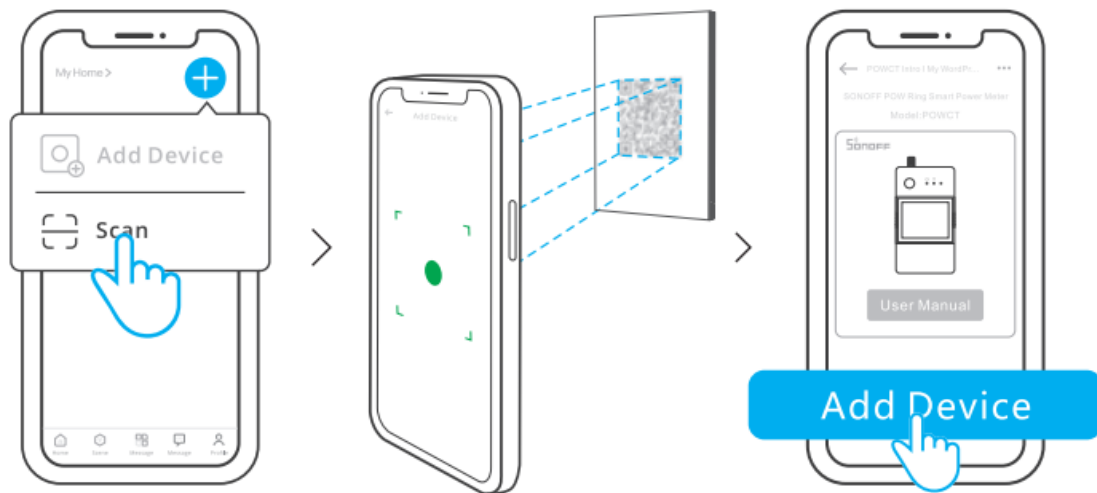
After powering on, the device will enter the Pairing Mode during the first use. The Wi-Fi LED indicator changes in a cycle of two short and one long flash and release.

## Scan QR Code to Add Device



⚠ The device will exit the Pairing Mode if not paired within 10mins. If you want to enter this mode, please long press button for about 5s until the Wi-Fi LED indicator changes in a cycle of two short and one long flash and release.

### Scan QR Code to Add Device

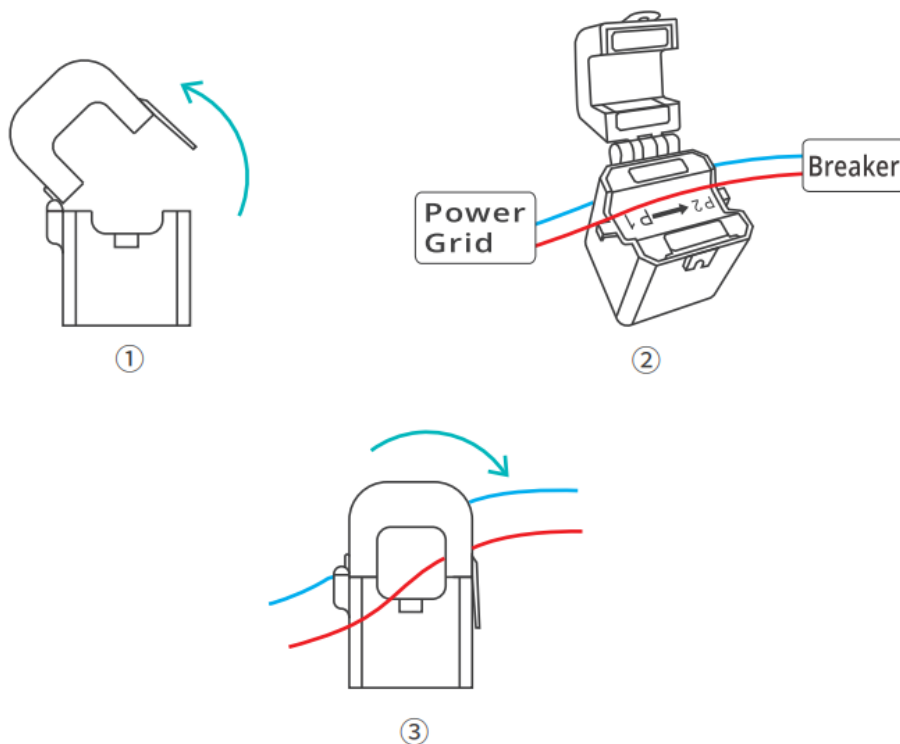


Open the eWeLink App, scan the QR code on the Quick Guide at the back, and follow the App instructions.

⚠ If the page doesn't display after scanning the code, please power on the device and then click the '+' button in the top right corner of the eWeLink App homepage. Select 'Add Device' to proceed.

### Test the current direction

MEASUREMENT CATEGORY CAT II 0-100A 300V~ MAX



The current direction in the line should match the arrow direction on the current transformer (see Figure ②).

⚠ To ensure electrical safety, the current transformer clamp should apply to double-insulated wires.

User Manual

<https://sonoff.tech/usermanuals>

Enter the website provided above to view the User Manual for the device.

## FCC compliance statement

1.This device complies with part 15 of the FCC Rules. Operation is subject to the following two conditions:

(1) This device may not cause harmful interference, and (2) This device must accept any interference received, including interference that may cause undesired operation.

2.Changes or modifications not expressly approved by the party responsible for compliance could void the user's authority to operate the equipment.

**Note:** This equipment has been tested and found to comply with the limits for a Class B digital device, pursuant to part 15 of the FCC Rules. These limits are designed to provide reasonable protection against harmful interference in a residential installation. This equipment generates, uses and can radiate radio frequency energy and, if not installed and used in accordance with the instructions, may cause harmful interference to radio communications. However, there is no guarantee that interference will not occur in a particular installation. If this equipment does cause harmful interference to radio or television reception, which can be determined by turning the equipment off and on, the user is encouraged to try to correct the interference by one or more of the following measures:

- Reorient or relocate the receiving antenna.
- Increase the separation between the equipment and receiver.
- Connect the equipment into an outlet on a circuit different from that to which the receiver is connected.
- Consult the dealer or an experienced radio/TV technician for help.

FCC Radiation Exposure statement:

This equipment complies with FCC radiation exposure limits set forth for an uncontrolled environment.

This equipment should be installed and operated with minimum distance of 20 cm between the radiator and your body.

This transmitter must not be co-located or operating in conjunction with any other antenna or transmitter.

### SAR Warning

Under normal use of condition, this equipment should be kept a separation distance of at least 20 cm between the antenna and the body of the user.

### EU Declaration of Conformity

Hereby, Shenzhen Sonoff Technologies Co., Ltd declares that the radio equipment type POWCT is in compliance with Directive 2014/53/EU. The full text of the EU declaration of conformity is available at the following internet address: <https://sonoff.tech/compliance/>

### For CE frequency

EU Operating Frequency Range:

2402-2480MHz(BLE)

802.11 b/g/n20 2412-2472 MHz(Wi-Fi )

802.11 n40: 2422-2462 MHz(Wi-Fi )

EU Output Power:

BLE≤10dBm

Wi-Fi 2.4G≤20dBm

### WEEE Disposal and Recycling Information



All products bearing this symbol are waste electrical and electronic equipment (WEEE as in directive 2012/19/EU) which should not be mixed with unsorted household waste. Instead, you should protect human health and the environment by handing over your waste equipment to a designated collection point for the recycling of waste electrical and electronic equipment, appointed by the government or local authorities. Correct disposal and recycling will help prevent potential negative consequences to the environment and human health. Please contact the installer or local authorities for more information about the location as well as terms and conditions of such collection points.

Scatola	Manuale	Neto	Borsa	Borsa
PAP 21	PAP 22	EVA 7	CPE 7	LDPE 4
Carta	Carta	Plastica	Plastica	Plastica
RACCOLTA DIFFERENZIATA				
Verifica le disposizioni del tuo Comune. Separa le componenti e conferiscile in modo corretto.				

A suitable circuit-breaker must be included in the installation when install the device. The circuit-breaker is used as disconnect device, it must be suitably located and easily reached.



**Shenzhen Sonoff Technologies Co., Ltd.**

3F & 6F, Bldg A, No. 663, Bulong Rd, Shenzhen, Guangdong, China

ZIP code: 518000 Website: [sonoff.tech](https://sonoff.tech)

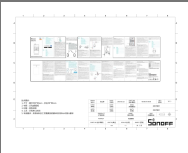
Service email: [support@itead.cc](mailto:support@itead.cc)

MADE IN CHINA





## Documents / Resources

	<p><a href="#">Sonoff POWCT Smart Power Meter</a> [pdf] User Guide POWCT Smart Power Meter, POWCT, Smart Power Meter, Power Meter, Meter</p>
---	--

## References

- [Compliance - SONOFF Official](#)
- [User Manual](#)

[Manuals+](#), [Privacy Policy](#)

This website is an independent publication and is neither affiliated with nor endorsed by any of the trademark owners. The "Bluetooth®" word mark and logos are registered trademarks owned by Bluetooth SIG, Inc. The "Wi-Fi®" word mark and logos are registered trademarks owned by the Wi-Fi Alliance. Any use of these marks on this website does not imply any affiliation with or endorsement.