

**SONOFF**  
**PIR3-RF-V2.0 Motion**  
**Sensor**



## SONOFF PIR3-RF-V2.0 Motion Sensor User Guide

[Home](#) » [SonOFF](#) » SONOFF PIR3-RF-V2.0 Motion Sensor User Guide 

### Contents

- [1 SONOFF PIR3-RF-V2.0 Motion Sensor](#)
- [2 Download the eWelink App](#)
- [3 Add sub-devices](#)
- [4 Installation](#)
- [5 FCC STATEMENT](#)
- [6 CONTACT](#)
- [7 Documents / Resources](#)
  - [7.1 References](#)
- [8 Related Posts](#)



### SONOFF PIR3-RF-V2.0 Motion Sensor

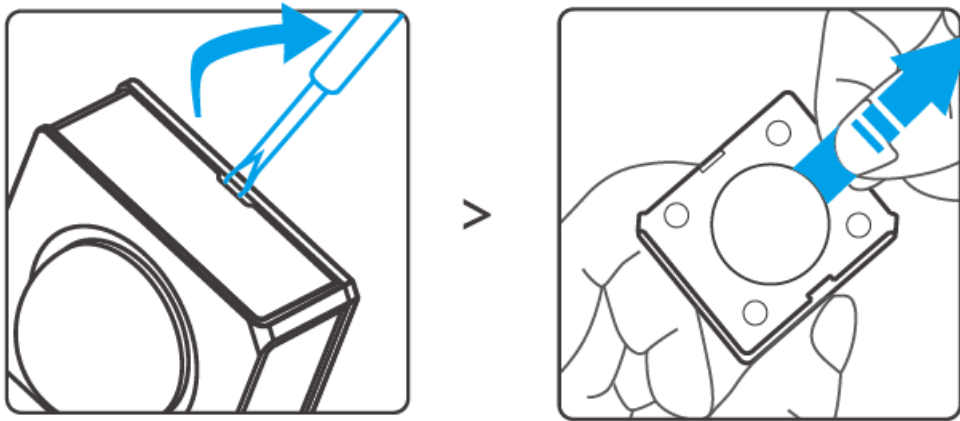


The device can be operated intelligently by communicating with other devices using the SONOFF 433MHz RF Bridge. It can also work with other gateways supporting the 433MHz wireless protocol. Detailed information is in accordance with the final product.

## Download the eWeLink App

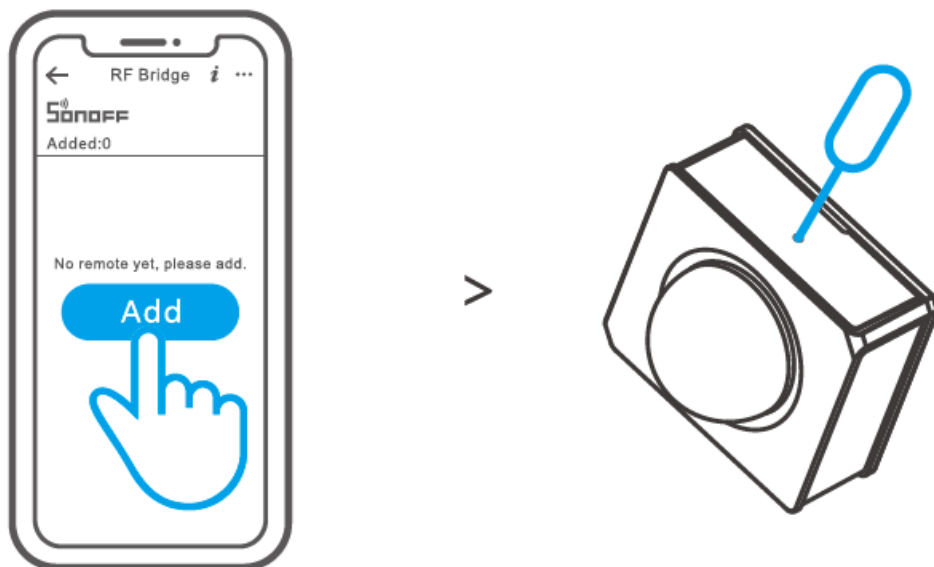


Take out the battery insulation sheet.



## Add sub-devices

Connect the gateway before adding the sub-device.

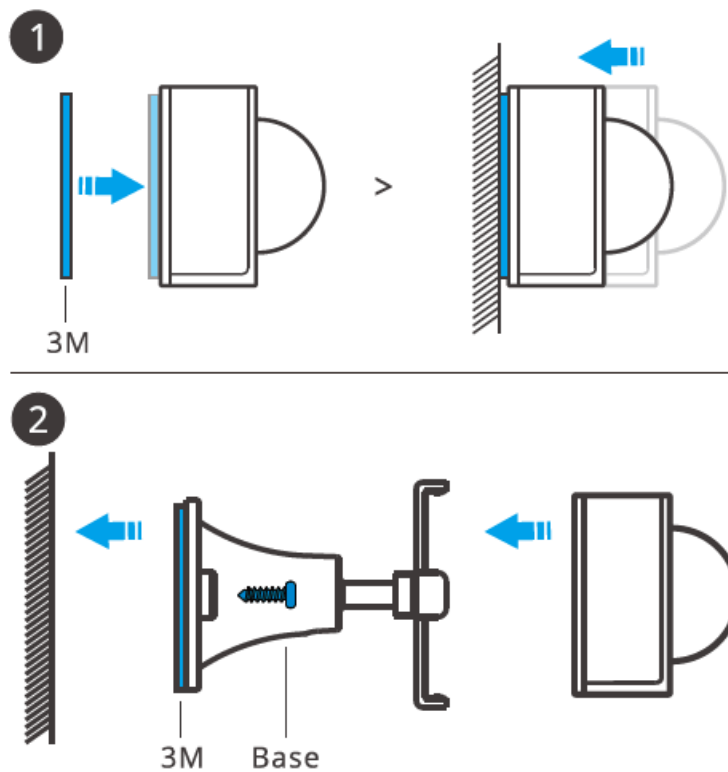


Launch the eWeLink APP, select the Bridge to be paired, tap “Add” and select

- Alarm”, and you will hear a “Beep” that indicates the Bridge enters the pairing mode, then short press the pairing button on the device (or make the device detect the movement ) so that the pairing is successful when the red LED keeps on for 1 s and the Bridge makes a “Beep-Beep• sound.

If the device is failed to be added, please move the device closer to the Bridge and add it again

## Installation



The base is not included in the package, please purchase it separately.

## User Manual



<https://sonoff.tech/usermanuals>

## FCC STATEMENT

### FCC compliance statement

This device complies with part 15 of the FCC Rules. Operation is subject to the following two conditions:

1. This device may not cause harmful interference, and
2. This device must accept any interference received, including interference that may cause undesired operation.

Changes or modifications not expressly approved by the party responsible for compliance could void the user's authority to operate the equipment.

**Note:** This equipment has been tested and found to comply with the limits for a Class B digital device, according to part 15 of the FCC Rules. These limits are designed to provide reasonable protection against harmful interference in a residential installation. This equipment generates, uses and can radiate radio frequency energy and, if not installed and used in accordance with the instructions, may cause harmful interference to radio communications. However, there is no guarantee that interference will not occur in a particular installation. If this equipment does cause harmful interference to radio or television reception, which can be determined by turning the equipment off and on, the user is encouraged to try to correct the interference by one or more of the following measures:

- Reorient or relocate the receiving antenna.
- Increase the separation between the equipment and the receiver.
- Connect the equipment to an outlet on a circuit different from that to which the receiver is connected.
- Consult the dealer or an experienced radio/TV technician for help.

#### FCC Radiation Exposure statement:

This equipment complies with FCC radiation exposure limits set forth for an uncontrolled environment. This equipment should be installed and operated with minimum distance of 20 cm between the radiator and your body. This transmitter must not be co-located or operating in conjunction with any other antenna or transmitter.

Scatola	Manuale
PAP 21	PAP 22
Carta	Carta
RACCOLTA	
Verifica le disposizioni del tuo Comune. Separa le componenti e conferiscile in modo corretto.	

#### Warning

Under normal use conditions, this equipment should keep a separation distance of at least 20 cm between the antenna and the body of the user.

#### For CE Frequency

- EU Operating Frequency Range
- SRD: 433.92MHZ
- EU Output Power
- $433.92\text{MHz} \leq 10\text{dBm}$

#### EU Declaration of Conformity

Hereby, Shenzhen Sonoff Technologies Co., Ltd. declares that the radio equipment type PIR3-RF is in compliance with Directive 2014/53/EU. The full text of the EU Declaration of Conformity is available at the following internet address: <https://sonoff.tech/usermanuals>

#### WEEE Disposal and Recycling Information

All products bearing this symbol are waste electrical and electronic equipment (WEEE as in directive 2012/19/EU) which should not be mixed with unsorted household waste. Instead, you should protect human health and the environment by handing over your waste equipment to a designated collection point for the recycling of waste electrical and electronic equipment, appointed by the government or local authorities. Correct disposal and recycling will help prevent potential negative consequences to the environment and human health. Please contact the installer or local authorities for more information about the location as well as terms and conditions of such collection points.



- Do not ingest battery, Chemical Burn Hazard.

- This product contains a coin/button cell battery.
- If the coin/button cell battery is swallowed, it can cause severe internal burns in just 2 hours and can lead to death.
- Keep new and used batteries away from children.
- If the battery compartment does not close securely, stop using the product and keep it away from children.
- If you think batteries might have been swallowed or placed inside any part of the body, seek immediate medical attention.
- Replacement of a battery with an incorrect type can defeat a safeguard (for example, in the case of some lithium battery types).
- Disposal of a battery into a fire or a hot oven, or mechanically crushing or cutting of a battery, that can result in an explosion.
- Leaving a battery in an extremely high temperature surrounding environment can result in an explosion or the leakage of flammable liquid or gas.
- A battery subjected to extremely low air pressure may result in an explosion or the leakage of flammable liquid or gas.


## WARNING

1. This product is not a toy and is not intended for use by children. For adult use only.
2. The appliance is suitable for moderate climates only.
3. The ventilation must not be impaired by covering the appliance with items such as newspapers, tablecloths, curtains, etc.
4. Naked flame sources, such as candles, must not be placed on the appliance.

## CONTACT

- Shenzhen Sonoff Technologies Co., Ltd.
- 1001, BLDG8, Lianhua Industrial Park, shenzhen, GD, China
- ZIP code: 518000
- Service email: [support@itead.cc](mailto:support@itead.cc)
- Website: [sonoff.tech](http://sonoff.tech)
- MADE IN CHINA

## Documents / Resources

	<p><b><a href="#">SONOFF PIR3-RF-V2.0 Motion Sensor</a></b> [pdf] User Guide  PIR3-RF-V2.0 Motion Sensor, PIR3-RF-V2.0, Motion Sensor, Sensor</p>
---	---

## References

- [User Manual](#)

